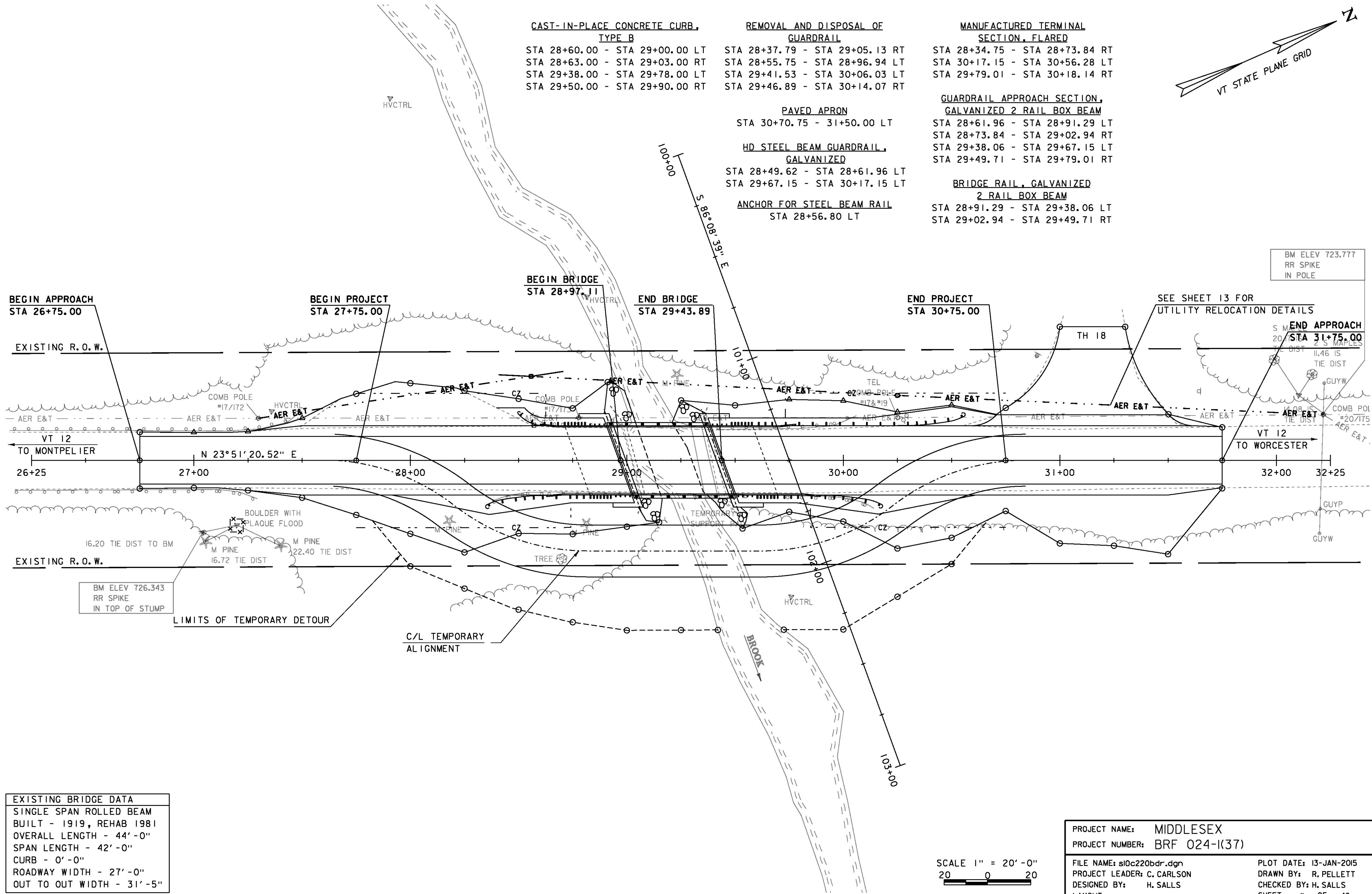


- CAST-IN-PLACE CONCRETE CURB, TYPE B**  
 STA 28+60.00 - STA 29+00.00 LT  
 STA 28+63.00 - STA 29+03.00 RT  
 STA 29+38.00 - STA 29+78.00 LT  
 STA 29+50.00 - STA 29+90.00 RT
- REMOVAL AND DISPOSAL OF GUARDRAIL**  
 STA 28+37.79 - STA 29+05.13 RT  
 STA 28+55.75 - STA 28+96.94 LT  
 STA 29+41.53 - STA 30+06.03 LT  
 STA 29+46.89 - STA 30+14.07 RT
- MANUFACTURED TERMINAL SECTION, FLARED**  
 STA 28+34.75 - STA 28+73.84 RT  
 STA 30+17.15 - STA 30+56.28 LT  
 STA 29+79.01 - STA 30+18.14 RT
- GUARDRAIL APPROACH SECTION, GALVANIZED 2 RAIL BOX BEAM**  
 STA 28+61.96 - STA 28+91.29 LT  
 STA 28+73.84 - STA 29+02.94 RT  
 STA 29+38.06 - STA 29+67.15 LT  
 STA 29+49.71 - STA 29+79.01 RT
- BRIDGE RAIL, GALVANIZED 2 RAIL BOX BEAM**  
 STA 28+91.29 - STA 29+38.06 LT  
 STA 29+02.94 - STA 29+49.71 RT
- PAVED APRON**  
 STA 30+70.75 - 31+50.00 LT
- HD STEEL BEAM GUARDRAIL, GALVANIZED**  
 STA 28+49.62 - STA 28+61.96 LT  
 STA 29+67.15 - STA 30+17.15 LT
- ANCHOR FOR STEEL BEAM RAIL**  
 STA 28+56.80 LT



BEGIN APPROACH  
STA 26+75.00

BEGIN PROJECT  
STA 27+75.00

BEGIN BRIDGE  
STA 28+97.11

END BRIDGE  
STA 29+43.89

END PROJECT  
STA 30+75.00

SEE SHEET 13 FOR  
UTILITY RELOCATION DETAILS  
END APPROACH  
STA 31+75.00

TO MONTPELIER

TO WORCESTER

BM ELEV 726.343  
RR SPIKE  
IN TOP OF STUMP

BM ELEV 723.777  
RR SPIKE  
IN POLE

**EXISTING BRIDGE DATA**  
 SINGLE SPAN ROLLED BEAM  
 BUILT - 1919, REHAB 1981  
 OVERALL LENGTH - 44'-0"  
 SPAN LENGTH - 42'-0"  
 CURB - 0'-0"  
 ROADWAY WIDTH - 27'-0"  
 OUT TO OUT WIDTH - 31'-5"

PROJECT NAME: MIDDLESEX  
 PROJECT NUMBER: BRF 024-1(37)  
 FILE NAME: sl0c220bdr.dgn  
 PROJECT LEADER: C. CARLSON  
 DESIGNED BY: H. SALLS  
 LAYOUT  
 PLOT DATE: 13-JAN-2015  
 DRAWN BY: R. PELLETT  
 CHECKED BY: H. SALLS  
 SHEET 11 OF 46

SCALE 1" = 20'-0"  
 20 0 20