

GPS CONTROL POINTS

HVCTRL #1

DAM AZ MK
 NORTH = 659959.426
 EAST = 1621056.096
 ELEV. = 714.466

GENERAL LOCATION, MIDDLESEX, VT.

TO REACH FROM THE INTERSECTION OF US ROUTE 2 (MEMORIAL DRIVE) AND VT ROUTE 12 (MAIN STREET) IN MONTPELIER, GO NORTHEAST ALONG MAIN STREET FOR 0.5 MI (0.8 KM) TO THE INTERSECTION OF SPRING STREET LEFT AT A ROTARY INTERSECTION. TURN LEFT AND GO NORTHWEST ALONG SPRING STREET FOR 0.05 MI (0.1 KM) TO ITS INTERSECTION WITH ELM STREET (VT ROUTE 12). TURN RIGHT AND GO NORTHEAST ALONG VT ROUTE 12 FOR 3.6 MI (5.8 KM) TO THE INTERSECTION OF HORN OF THE MOON ROAD RIGHT. TURN RIGHT AND GO EAST ALONG HORN OF THE MOON ROAD FOR 0.25 MI (0.4 KM) TO THE Y-INTERSECTION OF A DRIVE RIGHT CONTINUING ALONG THE HEIGHT OF THE DAM. BEAR RIGHT AND GO EAST ALONG THE DRIVE FOR ABOUT 40 M (131.2 FT) TO THE SITE OF THE MARK ON THE LEFT, ABOUT 50 M (164.0 FT) WEST OF A CHAIN-LINK FENCE LINE AT THE WEST EDGE OF THE SPILLWAY. THE MARK IS SET FLUSH WITH THE GROUND SURFACE IN THE TOP OF A 0.7 M (2.3 FT) X 0.4 M (1.3 FT) BOULDER. IT IS 4.5 M (14.8 FT) NORTH OF AND ABOUT 0.3 M (1.0 FT) LOWER THAN THE CENTERLINE OF THE DRIVE, 13.4 M (44.0 FT) SOUTH OF THE CENTERLINE OF HORN OF THE MOON ROAD, 5.5 M (18.0 FT) NORTHWEST OF POLE NO L87/R1, 10.5 M (34.4 FT) NORTHEAST OF A STRAIN POLE, 18.2 M (59.7 FT) EAST OF THE WEST END OF A CABLE GUARD RAIL AND 1.2 M (3.9 FT) NORTH OF THE GUARD RAIL.

HVCTRL #2

WRIGHT
 NORTH = 664651.890
 EAST = 1620232.433
 ELEV. = 647.270

GENERAL LOCATION, MIDDLESEX, VT.

TO REACH FROM THE INTERSECTION OF US ROUTE 2 (MEMORIAL DRIVE) AND VT ROUTE 12 (MAIN STREET) IN MONTPELIER, GO NORTHEAST ALONG MAIN STREET FOR 0.5 MI (0.8 KM) TO THE INTERSECTION OF SPRING STREET LEFT AT A ROTARY INTERSECTION. TURN LEFT AND GO NORTHWEST ALONG SPRING STREET FOR 0.05 MI (0.1 KM) TO ITS INTERSECTION WITH ELM STREET (VT ROUTE 12). TURN RIGHT AND GO NORTHEAST ALONG VT ROUTE 12 FOR 4.3 MI (6.9 KM) TO THE INTERSECTION OF THE GATED ENTRANCE DRIVE TO THE WRIGHTSVILLE DAM BOAT LAUNCH RIGHT. TURN RIGHT AND FOLLOW THE DRIVE FOR ABOUT 0.2 MI (0.3 KM) TO THE BOAT LAUNCH RAMP ON THE RIGHT. CONTINUE STRAIGHT AHEAD AND GO NORTH ALONG THE DRIVE (NOW THE ROADBED FOR THE FORMER VT ROUTE 12) FOR ABOUT 75 M (246.1 FT) TO A PARKING AREA AND THE ENTRANCE TO A DIM TRAIL RIGHT. PARK VEHICLE AND WALK EASTERLY ALONG THE TRAIL FOR ABOUT 30 M (98.4 FT) AND THEN SOUTHERLY FOR ANOTHER 30 M (98.4 FT) TO THE SITE OF THE MARK. THE MARK IS SET 15 CM (6 INCHES) BELOW GROUND SURFACE IN THE TOP OF A FENO STYLE MONUMENT. IT IS 31.3 M (102.7 FT) EAST OF AND ABOUT 0.5 M (1.6 FT) LOWER THAN THE CENTERLINE OF THE DRIVE, 27.0 M (88.6 FT) SOUTH OF A 10 CM (4 INCH) WHITE BIRCH WITH TRIANGULAR BLAZE, 18.7 M (61.4 FT) SOUTH-SOUTHWEST OF A 15 CM (6 INCH) SWAMP MAPLE WITH TRIANGULAR BLAZE IN A CLUMP OF FOUR, 15.6 M (51.2 FT) NORTHWEST OF A 50 CM (20 INCH) TWIN-TRUNKED MAPLE NEAR THE WATERS EDGE, 16.2 M (53.1 FT) SOUTH-SOUTHEAST OF A 15 CM (6 INCH) TWIN-TRUNKED APPLE WITH TRIANGULAR BLAZE AND 0.2 M (0.7 FT) WEST OF A FIBERGLASS WITNESS POST.

TRAVERSE TIES

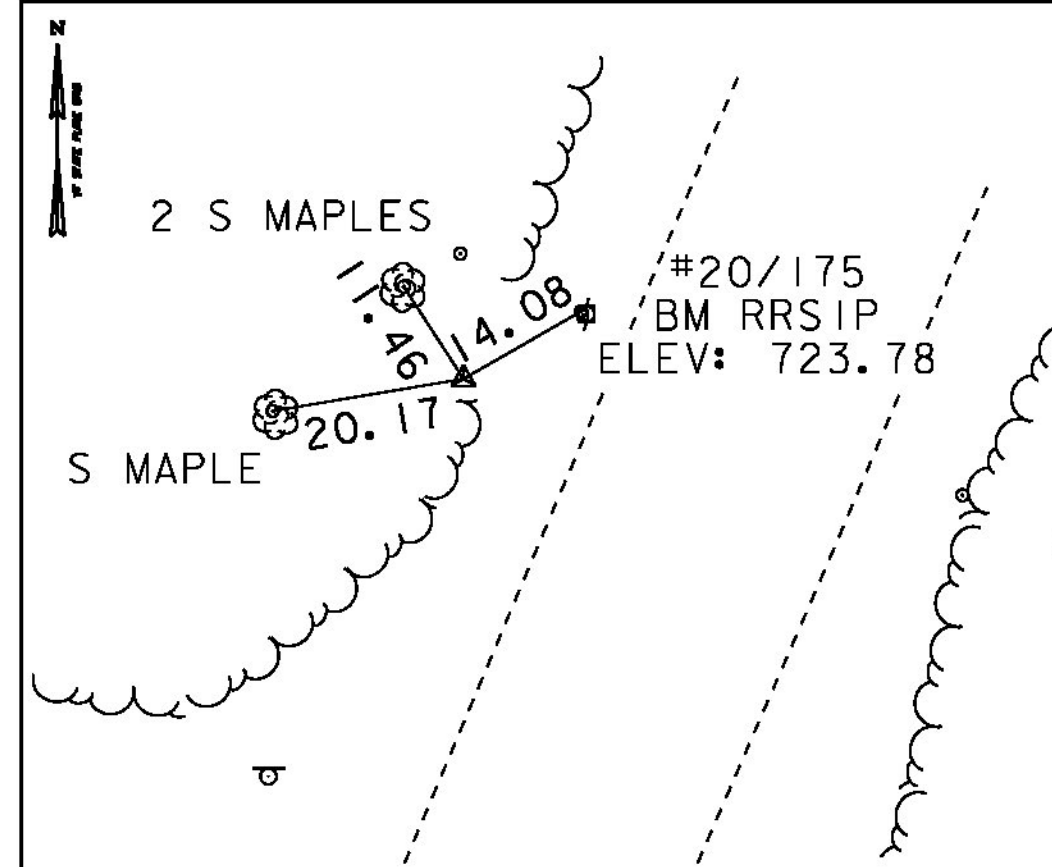
HVCTRL #3

NORTH = 660343.699
 EAST = 1619763.487
 ELEV. = 728.389

NOT TIED

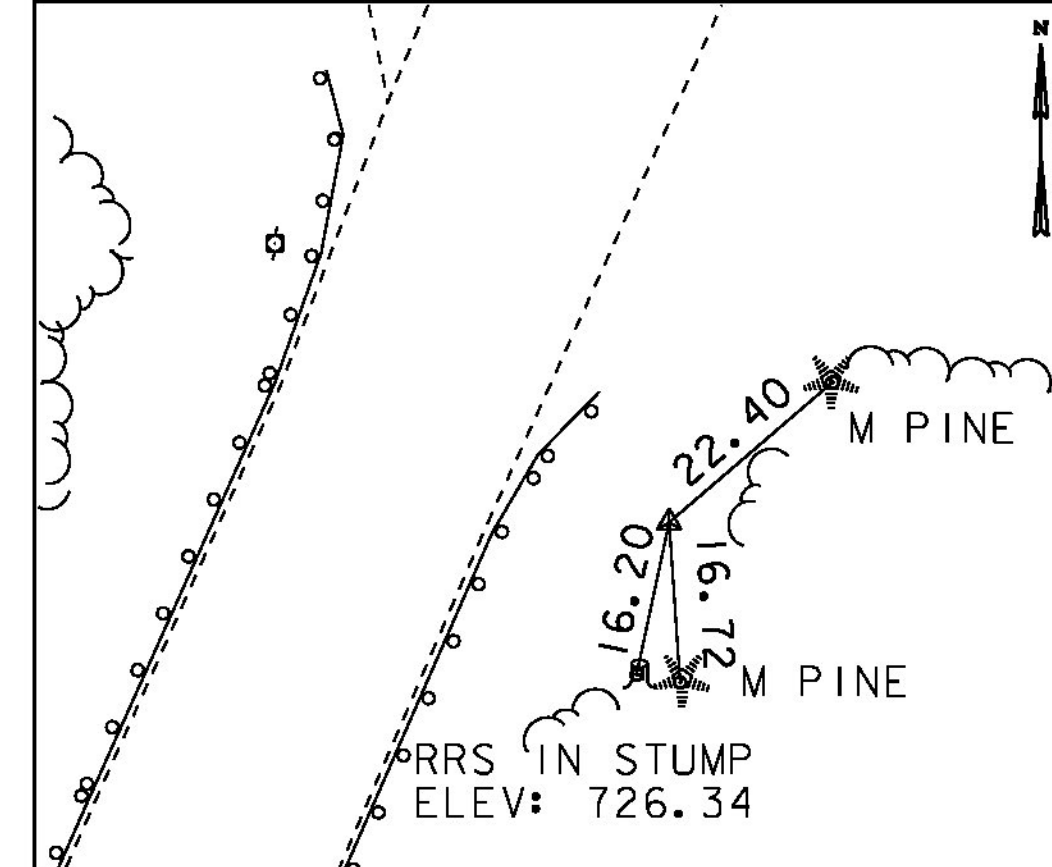
HVCTRL #4

NORTH = 661038.506
 EAST = 1620017.348
 ELEV. = 725.663



HVCTRL #5

NORTH = 660565.676
 EAST = 1619873.812
 ELEV. = 724.019



* MAIN TRAVERSE COMPLETED 1/10/2011 BY R. GILMAN P.C. & P. WINTERS

ALIGNMENT TIES

ALIGNMENT NAME: VT12PROP

POINT	STATION	NORTHING	EASTING
POB	26+25.00	660490.99	1619808.12
POE	32+25.00	661039.73	1620050.78

DATUM	
VERTICAL	NAVD 88
HORIZONTAL	NAD 83 (07)
ADJUSTMENT	COMPASS

PROJECT NAME:	MIDDLESEX
PROJECT NUMBER:	BRF 024-(K37)
FILE NAME:	sl0c220tie.dgn
PROJECT LEADER:	C. CARLSON
DESIGNED BY:	H. SALLS
TIE SHEET	
PLOT DATE:	13-JAN-2015
DRAWN BY:	R. BULLOCK
CHECKED BY:	H. SALLS
SHEET	10 OF 46