

646.402 DURABLE 4 INCH WHITE LINE, THERMOPLASTIC OR  
 646.403 DURABLE 4 INCH WHITE LINE, EXPOXY PAINT OR  
 646.404 DURABLE 4 INCH WHITE LINE, POLYUREA  
 (ALL LINES WILL INCLUDE EDGE LINE BREAKS AND  
 RADIUS FOR TOWN HIGHWAYS)  
 CASTLETON:  
 STA 118+00.00 - STA 123+50.00 EDGE LINE LT & RT

646.412 DURABLE 4 INCH YELLOW LINE, THERMOPLASTIC OR  
 646.413 DURABLE 4 INCH YELLOW LINE, EXPOXY PAINT OR  
 646.414 DURABLE 4 INCH YELLOW LINE, POLYUREA  
 (ALL LINES WILL INCLUDE C/L BREAKS FOR  
 TOWN HIGHWAYS) S=SOLID, D=DASHED  
 CASTLETON:  
 STA 120+50.00 - STA 123+50.00 S - S  
 STA 118+00.00 - STA 118+70.00 MEDIAN EDGE LINE RT  
 STA 118+00.00 - STA 118+05.00 MEDIAN EDGE LINE LT  
 STA 118+05.00 - STA 118+70.00 DOUBLE SOLID MEDIAN LT  
 STA 118+70.00 - STA 120+50.00 DOUBLE SOLID MEDIAN LT & RT  
 STA 122+65.44 DOUBLE SOLID LT, TH-68

646.602 TEMPORARY 4 INCH WHITE LINE, PAINT  
 (ALL LINES WILL INCLUDE EDGE LINE BREAKS AND  
 RADIUS FOR TOWN HIGHWAYS)  
 CASTLETON:  
 STA 118+00.00 - STA 123+50.00 EDGE LINE LT & RT

646.612 TEMPORARY 4 INCH YELLOW LINE, PAINT  
 (ALL LINES WILL INCLUDE C/L BREAKS FOR  
 TOWN HIGHWAYS) S=SOLID, D=DASHED  
 CASTLETON:  
 STA 120+50.00 - STA 123+50.00 LT C RT  
 STA 118+00.00 - STA 118+70.00 S S  
 STA 118+00.00 - STA 118+05.00 MEDIAN EDGE LINE RT  
 STA 118+05.00 - STA 118+70.00 DOUBLE SOLID MEDIAN LT  
 STA 118+70.00 - STA 120+50.00 DOUBLE SOLID MEDIAN LT & RT  
 STA 122+65.44 DOUBLE SOLID LT, TH-68

646.442 DURABLE 8 INCH WHITE LINE, THERMOPLASTIC OR  
 646.443 DURABLE 8 INCH WHITE LINE, EXPOXY PAINT OR  
 646.444 DURABLE 8 INCH WHITE LINE, POLYUREA  
 CASTLETON:  
 STA 119+76.0 - STA 119+88.0 FIRE HYDRANT NO PARKING ZONE RT

646.452 DURABLE 8 INCH YELLOW LINE, THERMOPLASTIC OR  
 646.453 DURABLE 8 INCH YELLOW LINE, EXPOXY PAINT OR  
 646.454 DURABLE 8 INCH YELLOW LINE, POLYUREA  
 CASTLETON:  
 STA 118+70.00 - STA 120+50.00 MEDIAN HATCHING LT & RT

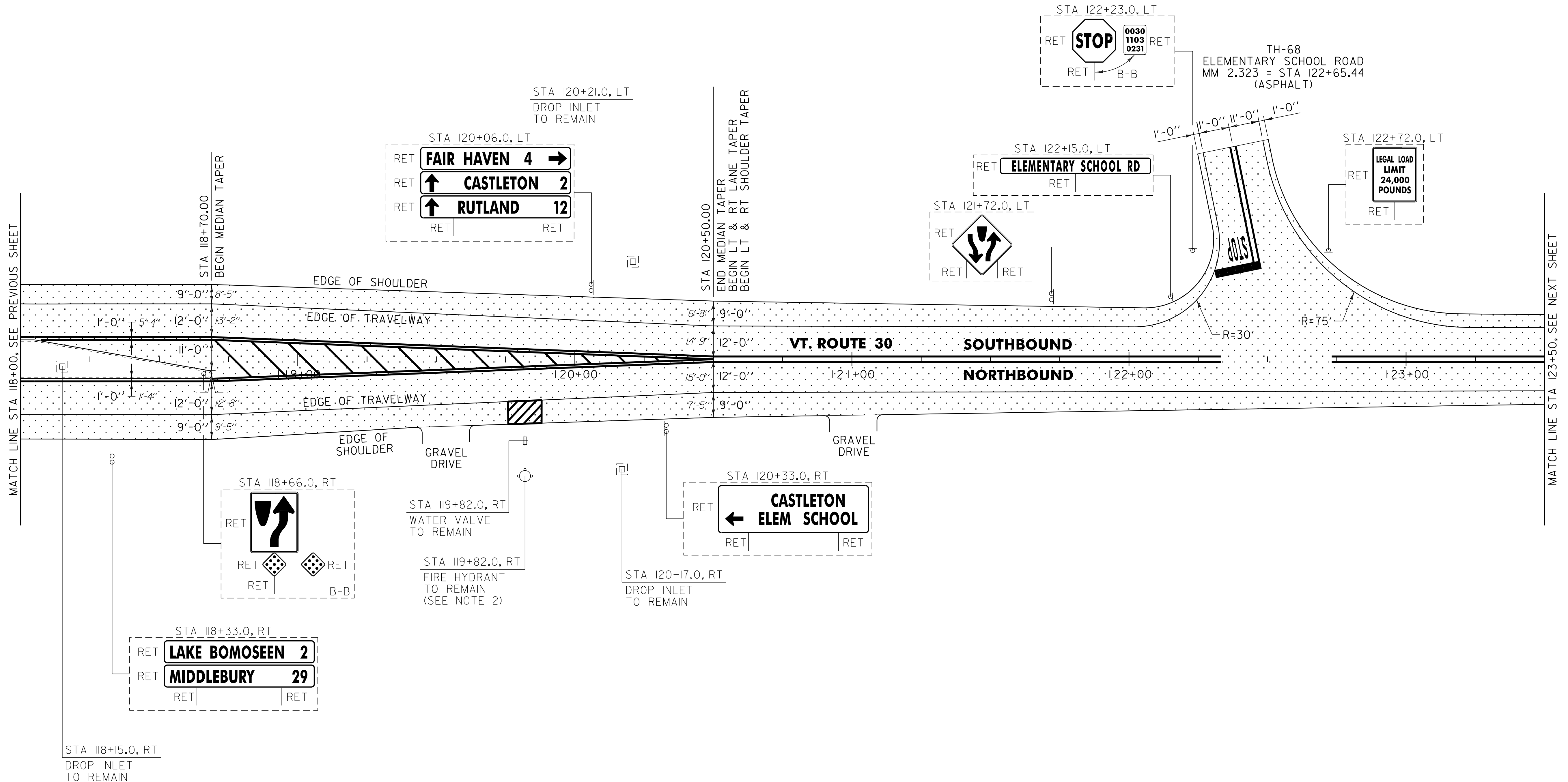
646.482 DURABLE 24 INCH STOP BAR, THERMOPLASTIC OR  
 646.483 DURABLE 24 INCH STOP BAR, EXPOXY PAINT OR  
 646.484 DURABLE 24 INCH STOP BAR, POLYUREA  
 CASTLETON:  
 STA 122+65.44 LT, TH-68

646.682 TEMPORARY 24 INCH STOP BAR, PAINT  
 CASTLETON:  
 STA 122+65.44 LT, TH-68

646.492 DURABLE LETTER OR SYMBOL, THERMOPLASTIC OR  
 646.493 DURABLE LETTER OR SYMBOL, EXPOXY PAINT  
 CASTLETON:  
 STA 122+65.44 LT, TH-68 "S,T,O,P" (4 EA)

646.692 TEMPORARY LETTER OR SYMBOL, PAINT  
 CASTLETON:  
 STA 122+65.44 LT, TH-68, "S,T,O,P" (8 EA)

646.81 PAINTED CURB  
 CASTLETON:  
 STA 118+00.0 - STA 118+70.0 LT (70.0 LF)  
 STA 118+40.0 - STA 118+70.0 RT (30.0 LF)



NOTES:  
 1. PAVING LIMIT ON ALL TOWN HIGHWAYS SHALL BE MEASURED 25 FT BACK FROM VT. ROUTE 30 EDGE OF SHOULDER UNLESS DENOTED OTHERWISE ON THE PLANS OR AS DIRECTED BY THE RESIDENT ENGINEER.  
 2. SEE SHEET 8 FOR FIRE HYDRANT PAVEMENT MARKING DETAIL.



**SIGN LEGEND**  
 R = REMOVE  
 S = SALVAGE  
 N = NEW  
 RET = RETAIN  
 B-B = BACK TO BACK  
 EXISTING = - - - - -  
 NEW = \_\_\_\_\_

<b>NOT TO SCALE</b>	
<b>PROJECT LAYOUT SHEET #8</b>	PROJECT NAME: CASTLETON
	PROJECT NUMBER: STP 2909(1)
	FILE NAME: p10c212.dgn
	PLOT DATE: 04-JUN-2013 09:2
DESIGNED BY: M.J.M.	DRAWN BY: W.G.P.
CHECKED BY: D.E.G.	CHECKED BY: D.E.G.
IPARM FILE: p10c212108.i	SHEET 136 OF 152