

646.402 DURABLE 4 INCH WHITE LINE, THERMOPLASTIC OR  
 646.403 DURABLE 4 INCH WHITE LINE, EPOXY PAINT OR  
 646.404 DURABLE 4 INCH WHITE LINE, POLYUREA  
 (ALL LINES WILL INCLUDE EDGE LINE BREAKS AND  
 RADIUS FOR TOWN HIGHWAYS)  
 CASTLETON:  
 STA 153+25.00 - STA 159+25.00 EDGE LINE LT & RT

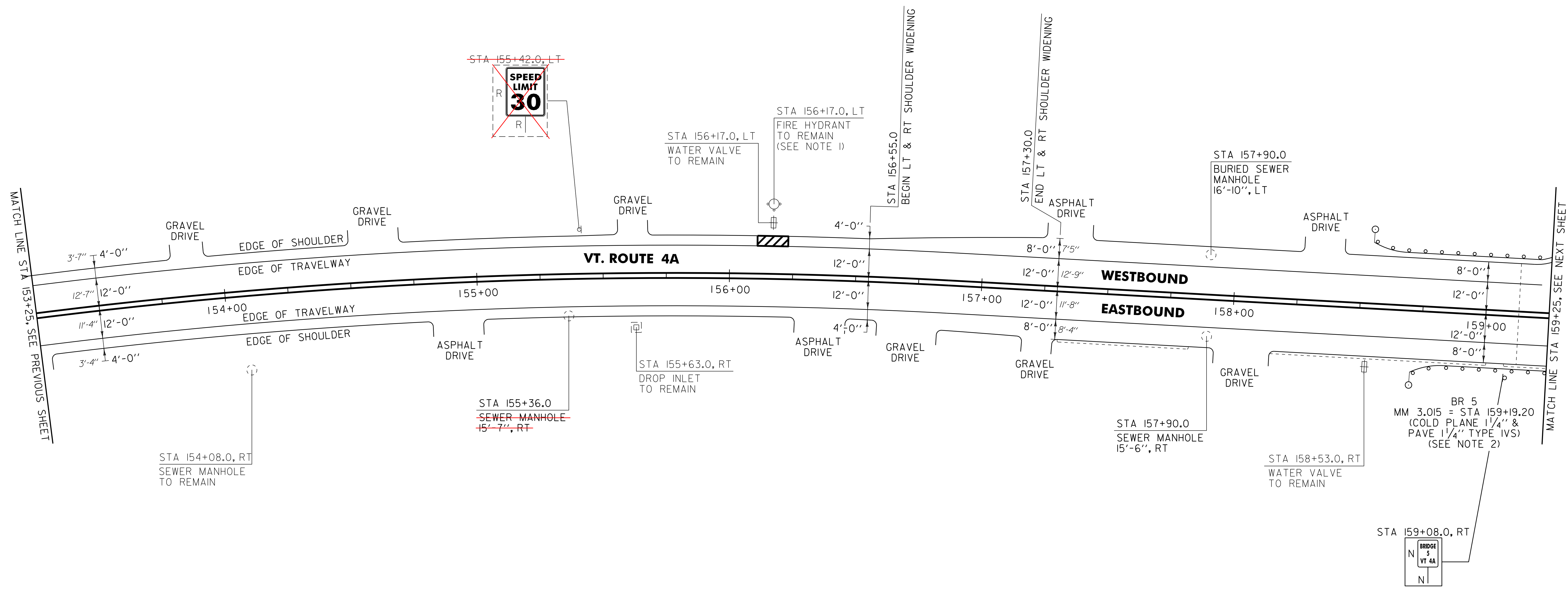
646.412 DURABLE 4 INCH YELLOW LINE, THERMOPLASTIC OR  
 646.413 DURABLE 4 INCH YELLOW LINE, EPOXY PAINT OR  
 646.414 DURABLE 4 INCH YELLOW LINE, POLYUREA  
 (ALL LINES WILL INCLUDE C/L BREAKS FOR  
 TOWN HIGHWAYS) S=SOLID, D=DASHED  
 CASTLETON:  
 STA 153+25.00 - STA 159+25.00 LT CL RT  
 S - S

646.602 TEMPORARY 4 INCH WHITE LINE, PAINT  
 (ALL LINES WILL INCLUDE EDGE LINE BREAKS AND  
 RADIUS FOR TOWN HIGHWAYS)  
 CASTLETON:  
 STA 153+25.00 - STA 159+25.00 EDGE LINE LT & RT

646.612 TEMPORARY 4 INCH YELLOW LINE, PAINT  
 (ALL LINES WILL INCLUDE C/L BREAKS FOR  
 TOWN HIGHWAYS) S=SOLID, D=DASHED  
 CASTLETON:  
 STA 153+25.00 - STA 159+25.00 LT CL RT  
 S - S

646.442 DURABLE 8 INCH WHITE LINE, THERMOPLASTIC OR  
 646.443 DURABLE 8 INCH WHITE LINE, EPOXY PAINT OR  
 646.444 DURABLE 8 INCH WHITE LINE, POLYUREA  
 CASTLETON:  
 STA 156+11.0 - STA 156+23.0 FIRE HYDRANT NO PARKING ZONE LT

675.50 REMOVING SIGNS  
 AS SHOWN - + 0  
 SIGN NOT THERE



525.10 REMOVAL OF EXISTING RAILING  
 CASTLETON:  
 STA 159+07.5 - STA 159+25.0 LT (17.5 LF)  
 STA 159+07.5 - STA 159+25.0 RT (17.5 LF)

525.50 BRIDGE RAILING REPAIR, TYPE I  
 CASTLETON:  
 STA 159+07.5 - STA 159+25.0 LT (17.5 LF)  
 STA 159+07.5 - STA 159+25.0 RT (17.5 LF)

604.42 CHANGING ELEVATION OF SEWER MANHOLES  
 CASTLETON:  
 STA 155+36.0 RT  
 STA 157+90.0 RT  
 STA 157+90.0 LT

621.20 STEEL BEAM GUARDRAIL, GALVANIZED  
 CASTLETON:  
 STA 158+55.5 - STA 158+82.5 LT (27.0 LF)  
 STA 158+68.0 - STA 158+82.5 RT (14.5 LF)

621.21 HD STEEL BEAM GUARDRAIL, GALVANIZED  
 CASTLETON:  
 STA 158+82.5 - STA 159+07.5 LT (32.5 LF)  
 STA 158+82.5 - STA 159+07.5 RT (32.5 LF)

621.60 ANCHOR FOR STEEL BEAM RAIL  
 CASTLETON:  
 STA 158+62.0 LT  
 STA 158+74.5 RT

621.80 REMOVAL AND DISPOSAL OF GUARDRAIL  
 CASTLETON:  
 STA 158+57.0 - STA 159+07.5 LT (50.5 LF)  
 STA 158+71.0 - STA 159+07.5 RT (36.5 LF)

676.10 DELINEATOR WITH STEEL POST  
 CASTLETON:  
 STA 158+55.5 LT  
 STA 158+68.0 RT

NOTES:  
 1. SEE SHEET 8 FOR FIRE HYDRANT PAVEMENT MARKING DETAIL.  
 2. SEE SHEET 118 FOR BR 5 DETAIL.

SIGN LEGEND  
 R = REMOVE  
 S = SALVAGE  
 N = NEW  
 RET = RETAIN  
 B-B = BACK TO BACK  
 EXISTING = - - - - -  
 NEW = \_\_\_\_\_

**NOT TO SCALE**

**PROJECT LAYOUT SHEET #2**

PROJECT NAME: CASTLETON	PLOT DATE: 04-JUN-2013 09:2
PROJECT NUMBER: STP 2908(1)	DRAWN BY: W.G.P.
FILE NAME: p10c210.dgn	CHECKED BY: D.E.G.
PROJECT LEADER: D.E.G.	SHEET 99 OF 152
DESIGNED BY: M.J.M.	
IPARM FILE: p10c210102.i	