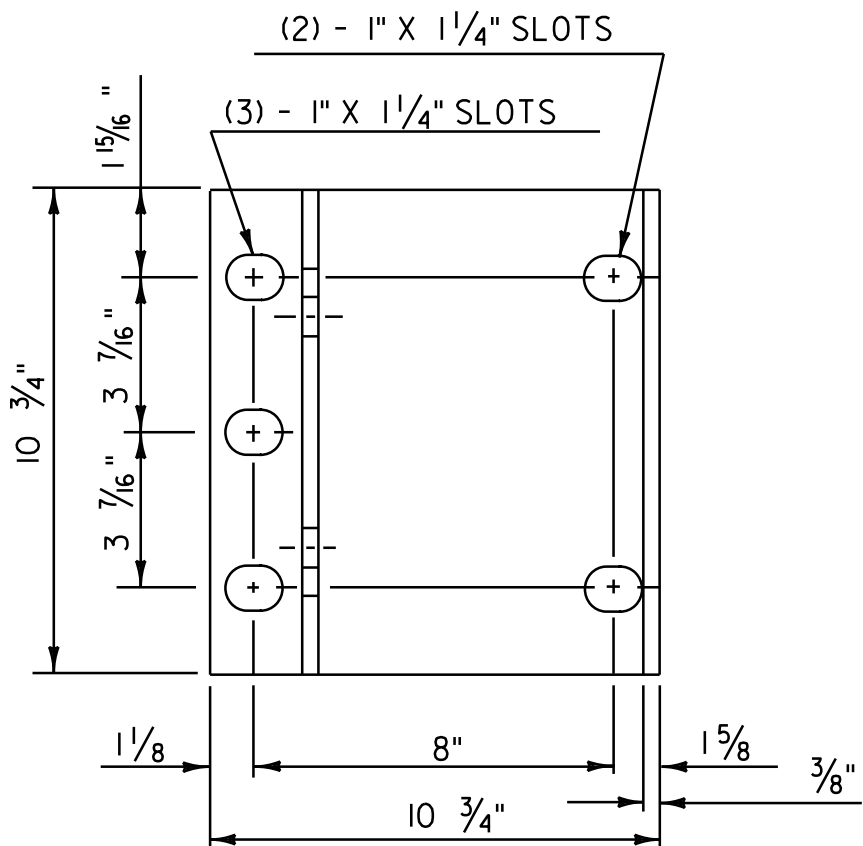
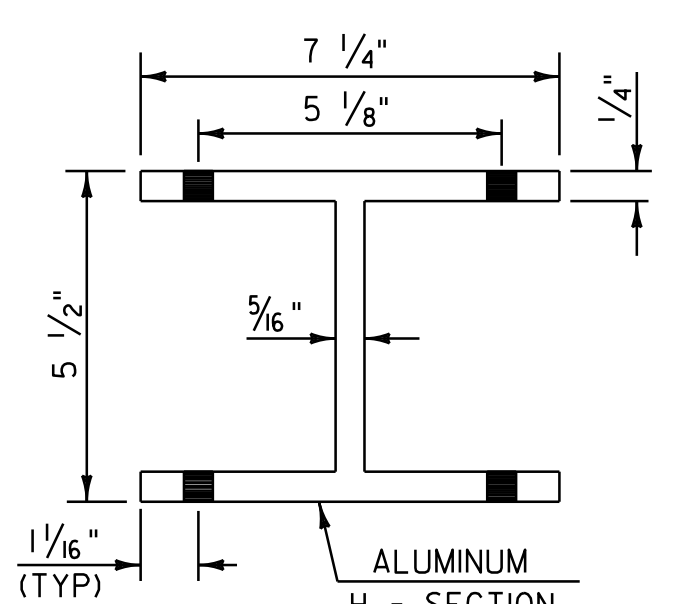
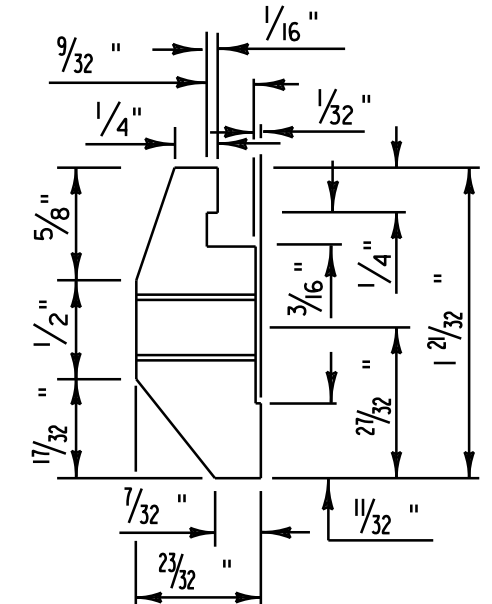
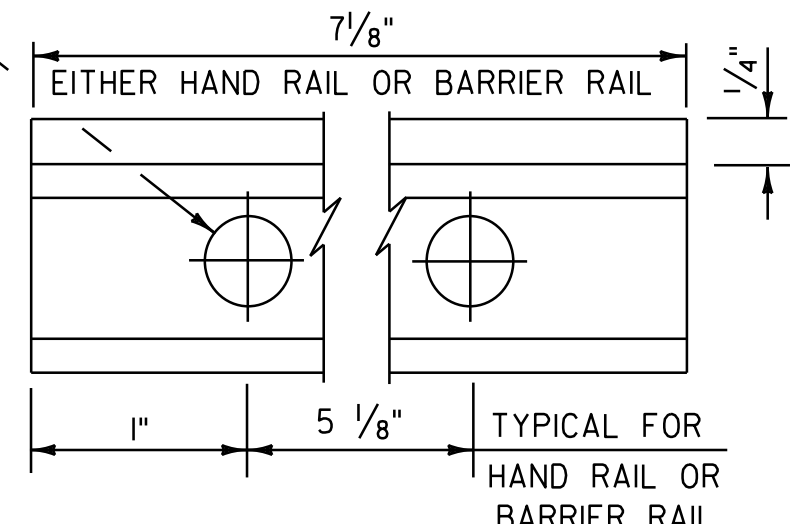
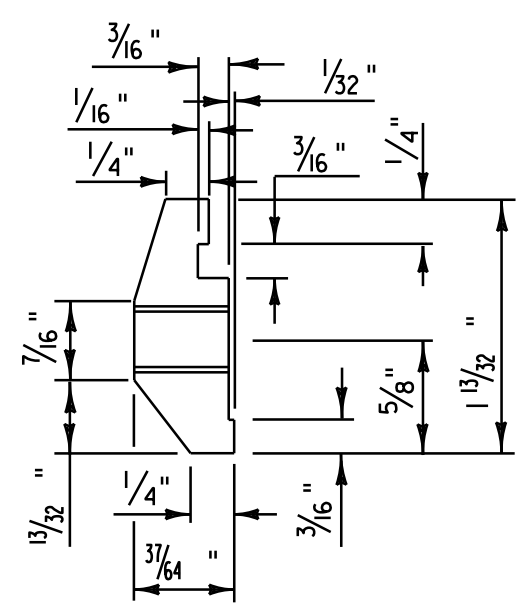


(2) 1/2" - 13 UNC THREADED HOLES FOR (2) 1/2" - 13 UNC X 1" STAINLESS STEEL HEX HEAD BOLTS WITH 1/16" O. D. X 1/32" I. D. X 3/32" THICK ALUMINUM WASHERS.



NOTES

- ANCHOR BOLTS, WASHERS AND HEAVY HEX NUTS SHALL CONFORM TO SUBSECTION 732.02(b)
- ALUMINUM POSTS, POST BASES, SPLICE BARS, CONNECTION BARS, RAILS AND BALUSTER FRAMES SHALL CONFORM TO SUBSECTION 732.02(a).
- ALUMINUM BALUSTER TUBES SHALL CONFORM TO SUBSECTION 732.02(a).
- ALUMINUM RAIL END CAPS SHALL CONFORM TO SUBSECTION 732.02(a).
- THE POST, RAIL, AND OFFSET BLOCK CONNECTION BOLTS SHALL CONFORM TO SUBSECTION 732.02(b).
- SET SCREWS FOR ATTACHING BALUSTERS TO RAILING SHALL CONFORM TO SUBSECTION 732.02(b).
- RIVETS SHALL CONFORM TO SUBSECTION 715.04(k)
- THE ANCHOR PLATE FOR THE POST ANCHOR ASSEMBLY SHALL CONFORM TO SUBSECTION 732.02(c).
- WELDING SHALL CONFORM TO THE REQUIREMENTS OF SUBSECTION 506.10.
- UNLESS OTHERWISE SPECIFIED, ANCHOR BOLTS SHALL BE CAST INTO THE CONCRETE AS DETAILED.
- WHENEVER FEASIBLE BARRIER RAIL AND HAND RAIL SECTIONS, SHALL BE FULL LENGTH SECTIONS (40'+) AND WHEN POSSIBLE SHALL BE ATTACHED TO THREE POSTS. RAILS SHALL BE SPLICED AT EACH DECK JOINT AND INTERMITTENTLY AS REQUIRED. SPLICES SHALL OCCUR WITHIN THE SAME PANEL.
- ENDS OF RAILS SHALL BE CUT SQUARE AND GROUND FREE OF BURRS OR RAGGED EDGES. EXPOSED ENDS SHALL BE CAPPED.
- THE CONCRETE CONTACT SURFACE AT THE POST BASE SHALL BE BUSH HAMMERED AND/OR SHIMMED AS REQUIRED FOR PROPER POST ALIGNMENT. POST HEIGHT ADJUSTMENTS LESS THAN 1/4" SHALL BE WITH 1/16" AND 1/8" SHIMS. CORRECTIONS EXCEEDING 1/4" SHALL BE WITH MORTAR CONFORMING WITH SUBSECTION 707.03. FABRIC BEARING PADS AND ANY REQUIRED SHIMS OR MORTAR ARE INCIDENTAL TO THE UNIT PRICE BID FOR THE RAILING.
- SHIMS AND 1/8" FABRIC BEARING PADS SHALL BE 10 3/4" SQUARE WITH SLOTTED HOLES SIZED AND LOCATED THE SAME AS THE POST BASE DETAIL. FABRIC BEARING PADS SHALL CONFORM TO SUBSECTION 732.02(f). SHIM MATERIAL SHALL CONFORM TO SUBSECTION 715.04(a).
- EXTRUDED SECTIONS ARE DETAILED TO COMPLY WITH CURRENT AASHTO-AGC-ARTBA STANDARDS. MINOR VARIATIONS OF THE DETAILS SHOWN MAY BE CONSIDERED PROVIDING THEY DO NOT REDUCE THE STRENGTH CAPACITY OF THE RAIL SYSTEM.
- ALUMINUM WASHERS SHALL BE CONFORM TO SUBSECTION 732.02(b).
- REFERENCE THIS SHEET WITH SHEETS 76 & 78 ALONG WITH SHEET 86 FOR BR 2 DETAILS.

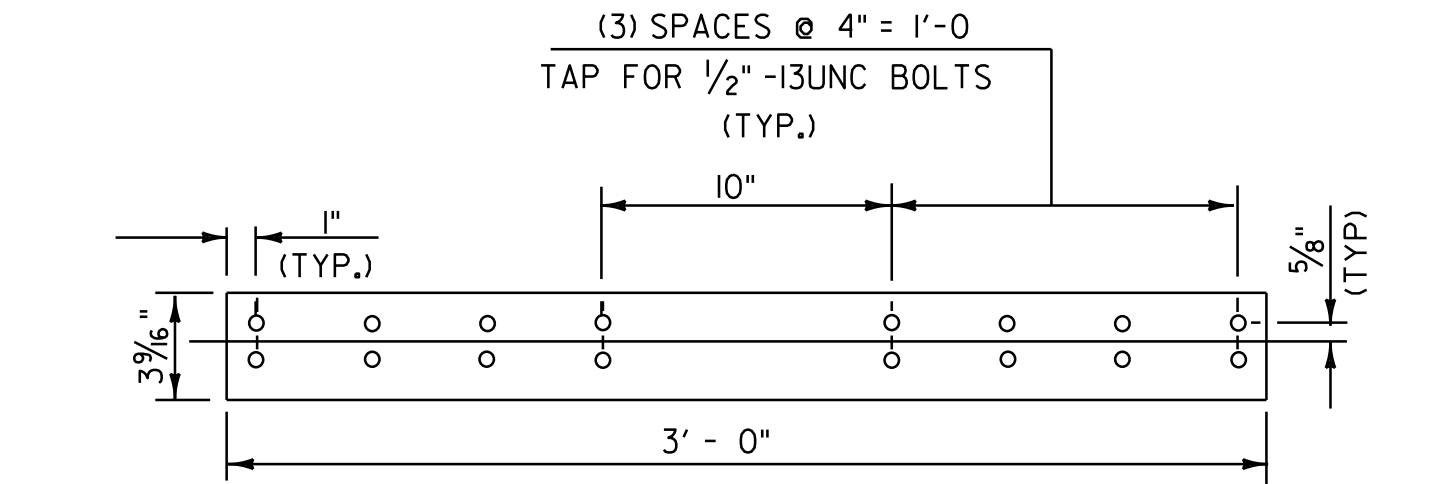
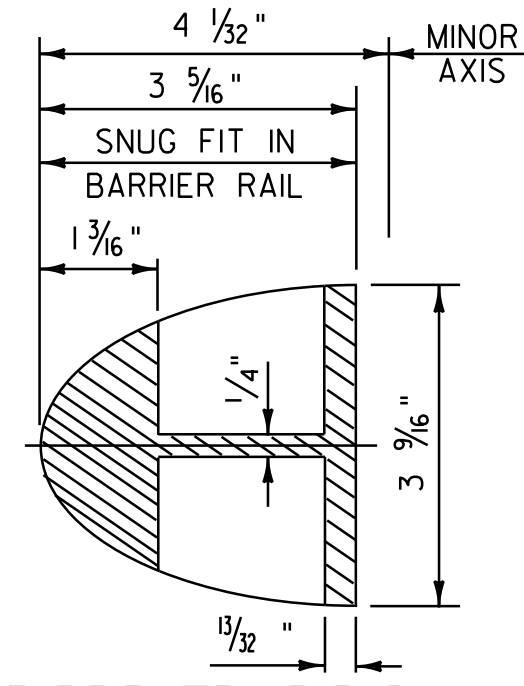
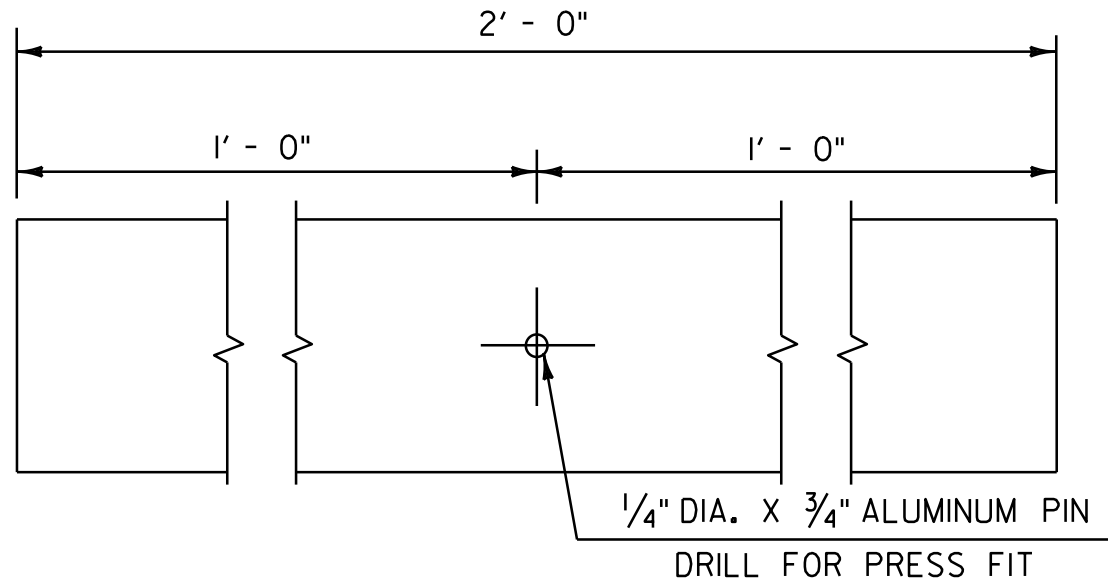
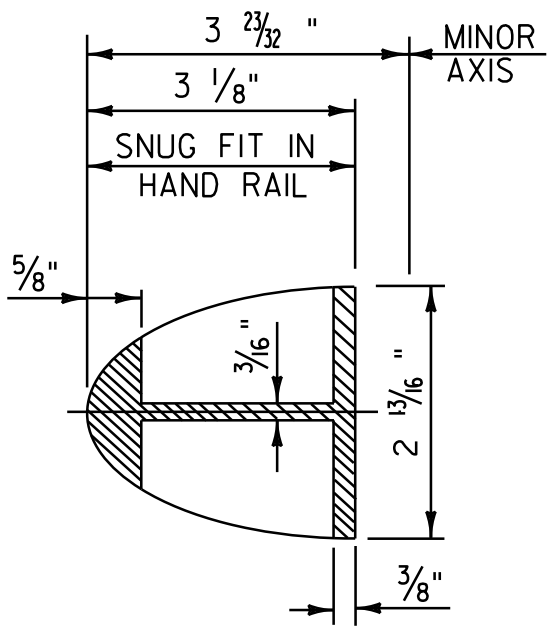
POST CONNECTION HAND RAIL SECTION

POST CONNECTION ELEVATION

POST CONNECTION BARRIER RAIL SECTION

PLAN VIEW OF OFFSET BLOCK (TO BE USED ON SUPERSTRUCTURE ON CURB SIDE)

POST BASE PLAN

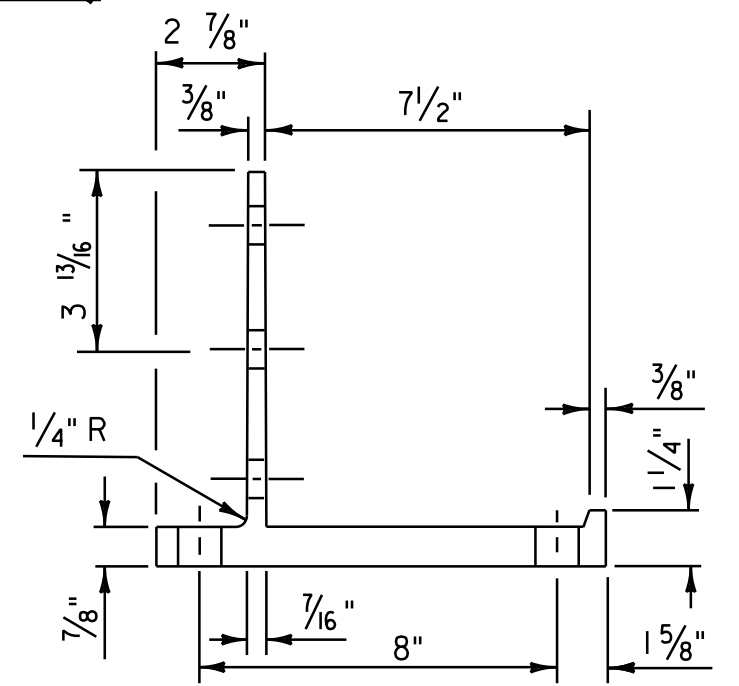
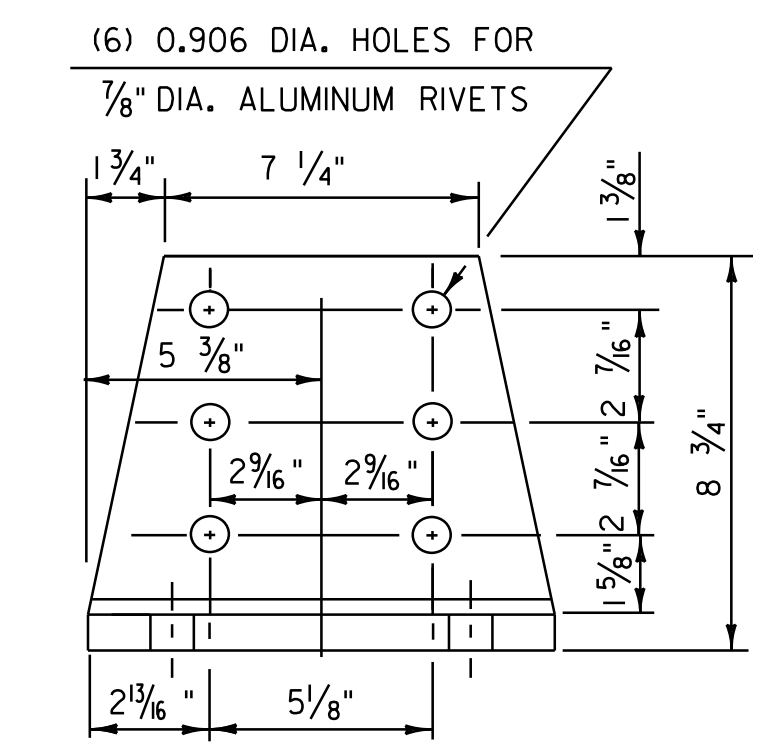


ELEVATION OF STD. BARRIER RAIL SPLICE BAR (FROM BACK)

HAND RAIL SPLICE SECTION

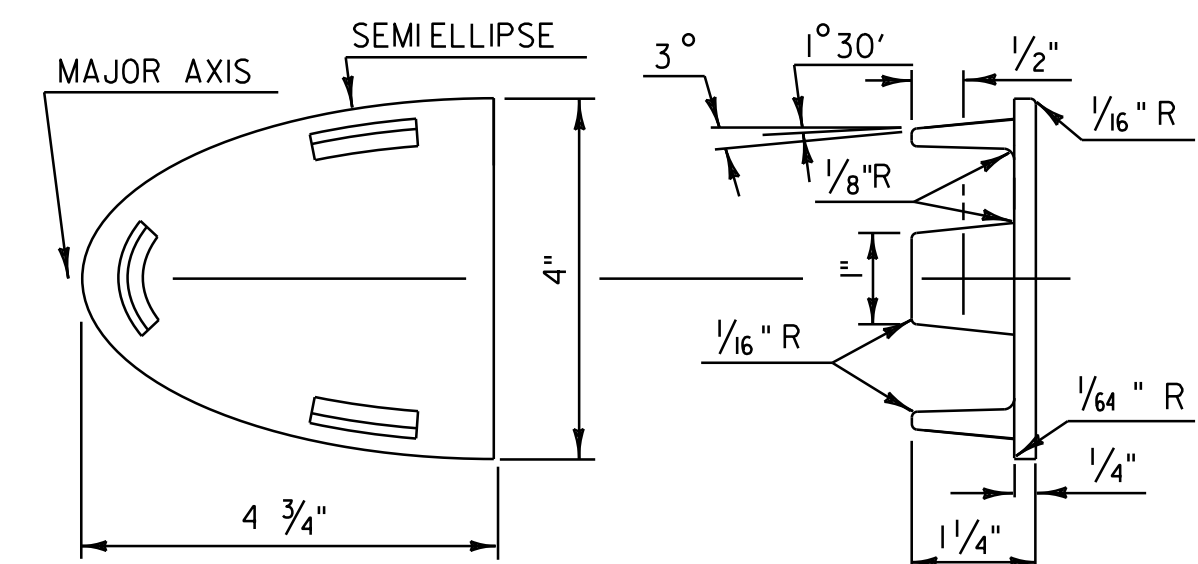
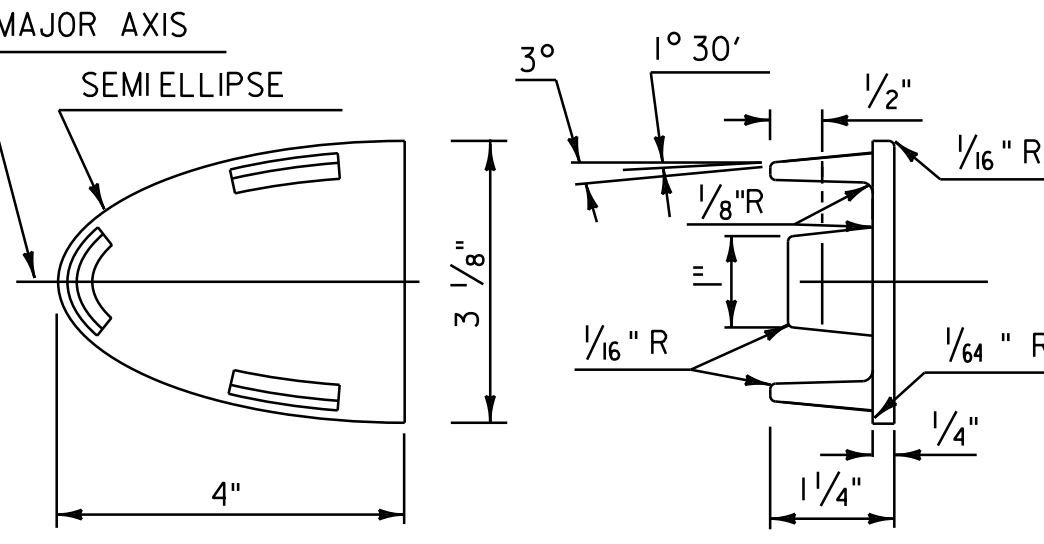
ELEVATION OF HAND RAIL SPLICE BAR

BARRIER RAIL SPLICE SECTION



POST BASE FRONT ELEVATION

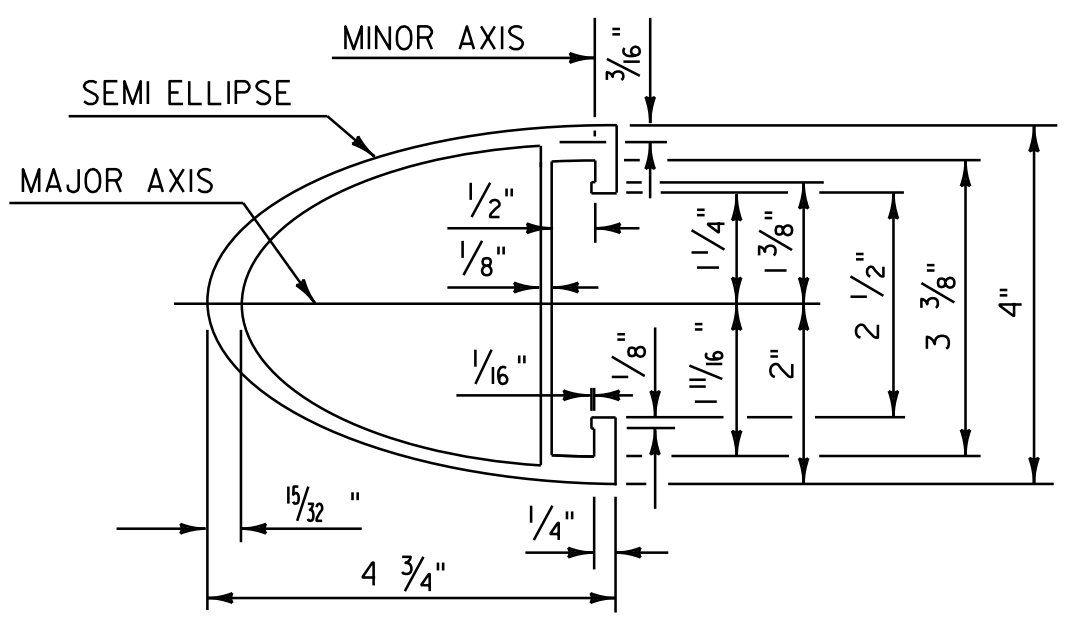
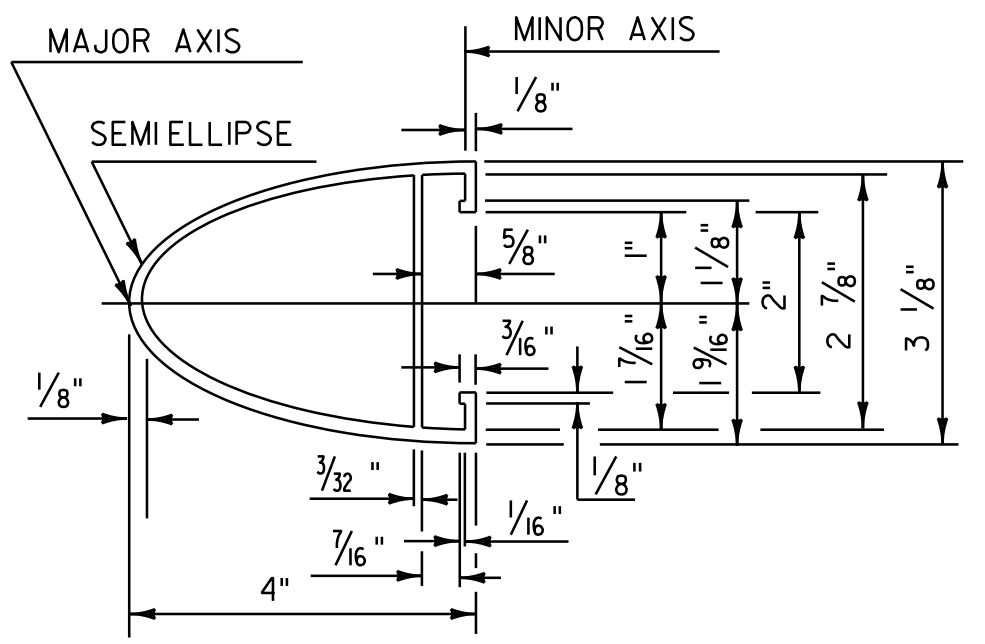
POST BASE SECTION



HAND RAIL END CAP

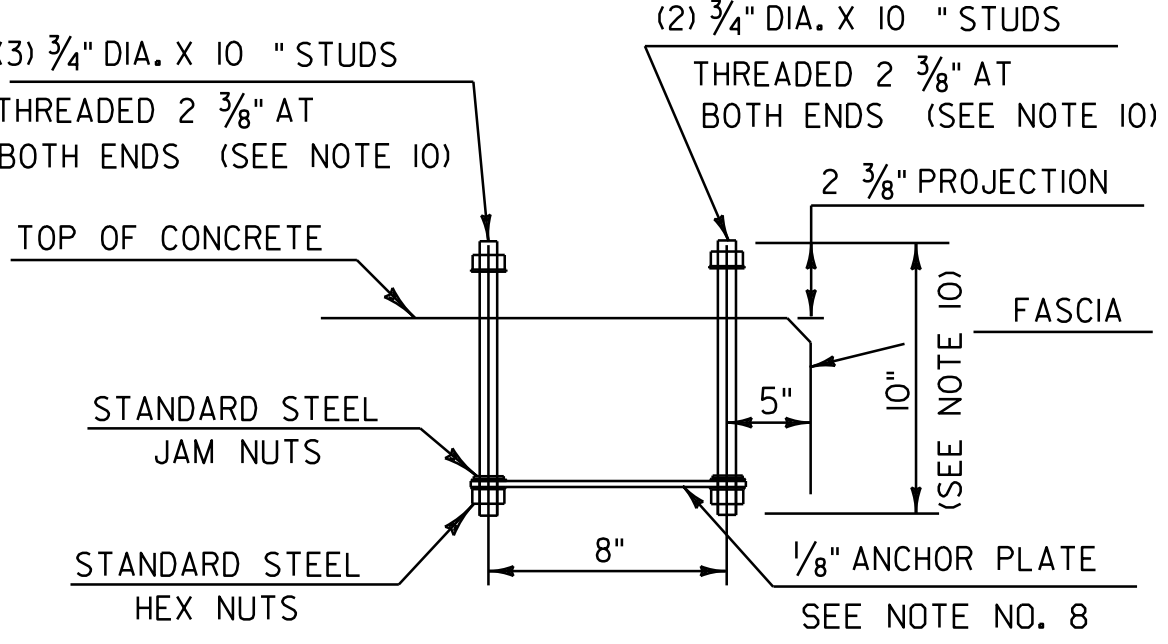
BARRIER RAIL END CAP

(SEE SHEET 76 FOR ELEVATION OF BARRIER RAIL SPLICE BAR)

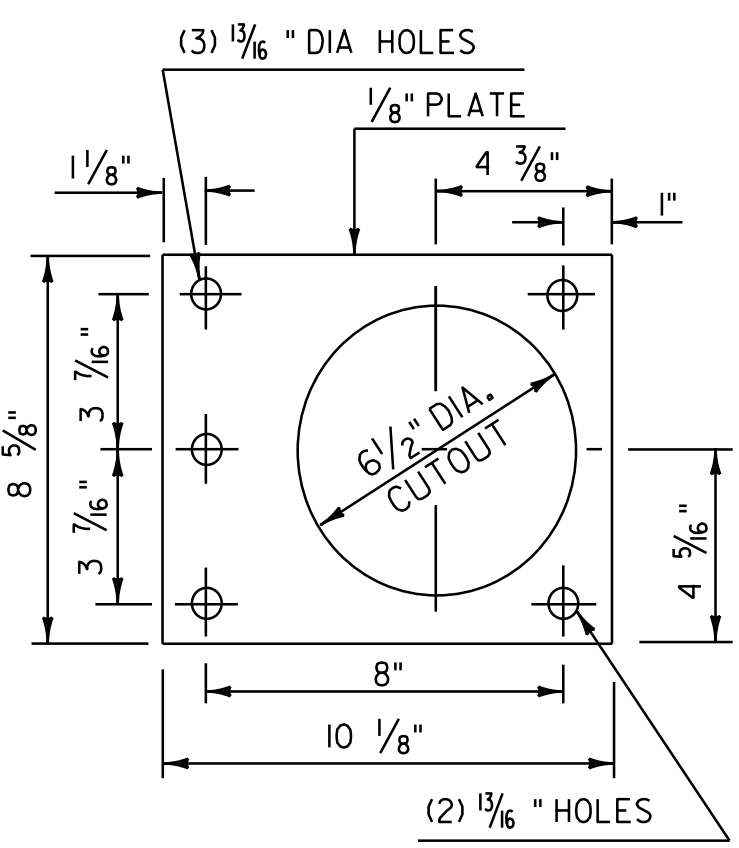


HAND RAIL SECTION

BARRIER RAIL SECTION



POST ANCHOR ASSEMBLY



ANCHOR PLATE

NOT TO SCALE

ALUMINUM APPROACH RAILING CONNECTION DETAIL SHEET #2

PROJECT NAME:	CASTLETON - WEST RUTLAND
PROJECT NUMBER:	STP 2705(i)
FILE NAME:	p07cl68.dgn
PROJECT LEADER:	D.E.G.
DESIGNED BY:	M.J.M.
IPARM FILE:	p07cl68aar2.i
PLOT DATE:	04-JUN-2013 09:2
DRAWN BY:	W.G.P.
CHECKED BY:	D.E.G.
SHEET	77 OF 152