

646.402 DURABLE 4 INCH WHITE LINE, THERMOPLASTIC OR
 646.403 DURABLE 4 INCH WHITE LINE, EPOXY PAINT OR
 646.404 DURABLE 4 INCH WHITE LINE, POLYUREA
 (ALL LINES WILL INCLUDE EDGE LINE BREAKS AND
 RADIUS FOR TOWN HIGHWAYS)
 WEST RUTLAND:
 STA 52+25.00 - STA 63+25.00 EDGE LINE LT & RT

646.412 DURABLE 4 INCH YELLOW LINE, THERMOPLASTIC OR
 646.413 DURABLE 4 INCH YELLOW LINE, EPOXY PAINT OR
 646.414 DURABLE 4 INCH YELLOW LINE, POLYUREA
 (ALL LINES WILL INCLUDE C/L BREAKS FOR
 TOWN HIGHWAYS) S=SOLID, D=DASHED
 WEST RUTLAND:
 STA 52+25.00 - STA 63+25.00

LT C RT
 S - S

646.602 TEMPORARY 4 INCH WHITE LINE, PAINT
 (ALL LINES WILL INCLUDE EDGE LINE BREAKS AND
 RADIUS FOR TOWN HIGHWAYS)
 WEST RUTLAND:
 STA 52+25.00 - STA 63+25.00 EDGE LINE LT & RT

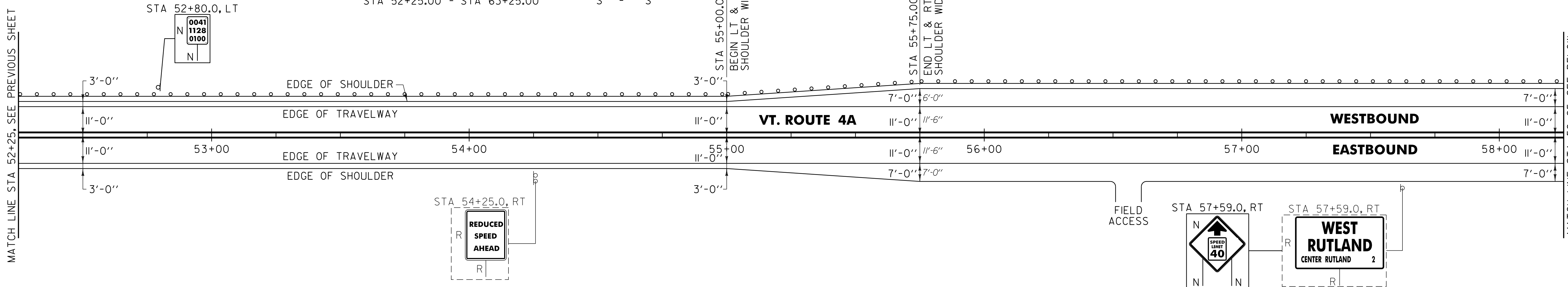
646.612 TEMPORARY 4 INCH YELLOW LINE, PAINT
 (ALL LINES WILL INCLUDE C/L BREAKS FOR
 TOWN HIGHWAYS) S=SOLID, D=DASHED
 WEST RUTLAND:
 STA 52+25.00 - STA 63+25.00

LT C RT
 S - S

675.50 REMOVING SIGNS
 AS SHOWN - 3

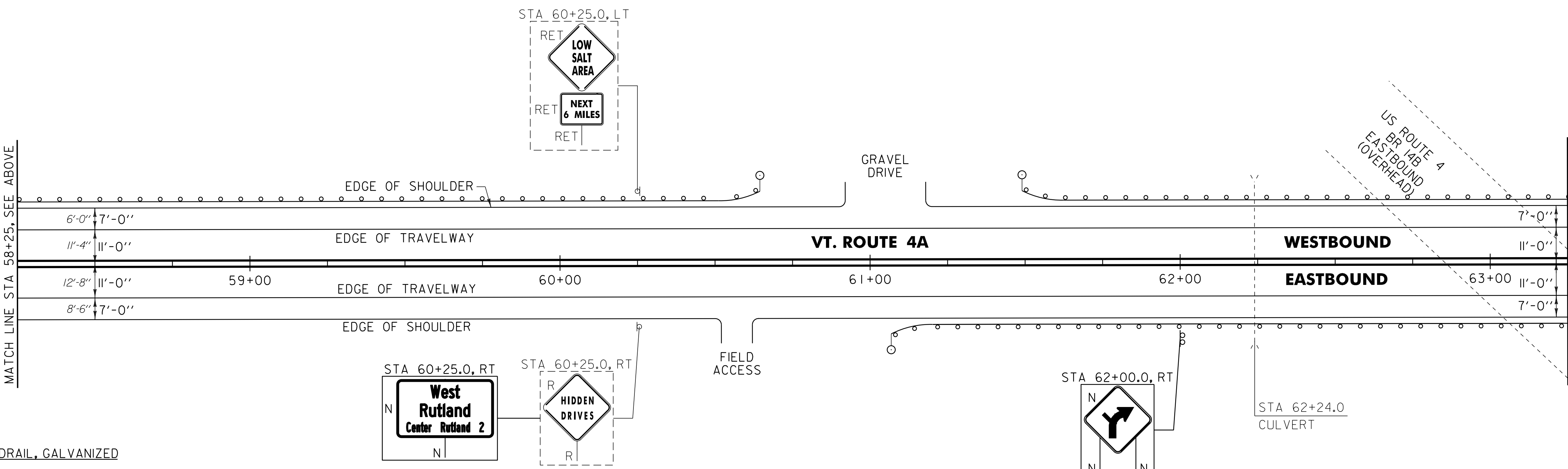
MATCH LINE STA 52+25, SEE PREVIOUS SHEET

MATCH LINE STA 58+25, SEE BELOW



MATCH LINE STA 58+25, SEE ABOVE

MATCH LINE STA 63+25, SEE NEXT SHEET



621.20 STEEL BEAM GUARDRAIL, GALVANIZED
 WEST RUTLAND:
 STA 61+06.8 - STA 63+25.0 RT (218.2 LF)
 STA 61+49.0 - STA 63+25.0 LT (176.0 LF)

621.205 STEEL BEAM GUARDRAIL W/8 FEET POSTS
 CASTLETON:
 STA 52+25.0 - STA 60+64.5 LT (839.5 LF)

621.60 ANCHOR FOR STEEL BEAM RAIL
 WEST RUTLAND:
 STA 60+58.0 LT
 STA 61+13.3 RT
 STA 61+55.5 LT

621.80 REMOVAL AND DISPOSAL OF GUARDRAIL
 WEST RUTLAND:
 STA 52+25.0 - STA 60+57.0 LT (832.0 LF)
 STA 61+05.0 - STA 63+25.0 RT (220.0 LF)
 STA 61+51.0 - STA 63+25.0 LT (174.0 LF)

676.10 DELINEATOR WITH STEEL POST
 WEST RUTLAND:
 STA 60+64.5 LT
 STA 61+06.8 RT
 STA 61+49.0 LT

SIGN LEGEND
 R = REMOVE
 S = SALVAGE
 N = NEW
 RET = RETAIN
 B-B = BACK TO BACK
 EXISTING = - - - - -
 NEW = _____

NOT TO SCALE

PROJECT LAYOUT SHEET #27	PROJECT NAME: CASTLETON - WEST RUTLAND	PLOT DATE: 04-JUN-2013 09:2
	PROJECT NUMBER: STP 2705(i)	DRAWN BY: W.G.P.
	FILE NAME: p07cl68.dgn	CHECKED BY: D.E.G.
	PROJECT LEADER: D.E.G. DESIGNED BY: M.J.M. IPARM FILE: p07cl68i27.i	SHEET 48 OF 152