

646.402 DURABLE 4 INCH WHITE LINE, THERMOPLASTIC OR
 646.403 DURABLE 4 INCH WHITE LINE, EPOXY PAINT OR
 646.404 DURABLE 4 INCH WHITE LINE, POLYUREA
 (ALL LINES WILL INCLUDE EDGE LINE BREAKS AND
 RADIUS FOR TOWN HIGHWAYS)
 CASTLETON:
 STA 203+49.12 - STA 209+25.00 EDGE LINE LT & RT
 STA 208+20.00 - STA 209+25.00 DOTTED LANE LINE RT

646.412 DURABLE 4 INCH YELLOW LINE, THERMOPLASTIC OR
 646.413 DURABLE 4 INCH YELLOW LINE, EPOXY PAINT OR
 646.414 DURABLE 4 INCH YELLOW LINE, POLYUREA
 (ALL LINES WILL INCLUDE C/L BREAKS FOR
 TOWN HIGHWAYS) S=SOLID, D=DASHED
 CASTLETON:
 STA 203+49.12 - STA 205+45.00 LT & RT
 STA 205+45.00 - STA 209+25.00 DOUBLE SOLID MEDIAN LT & RT

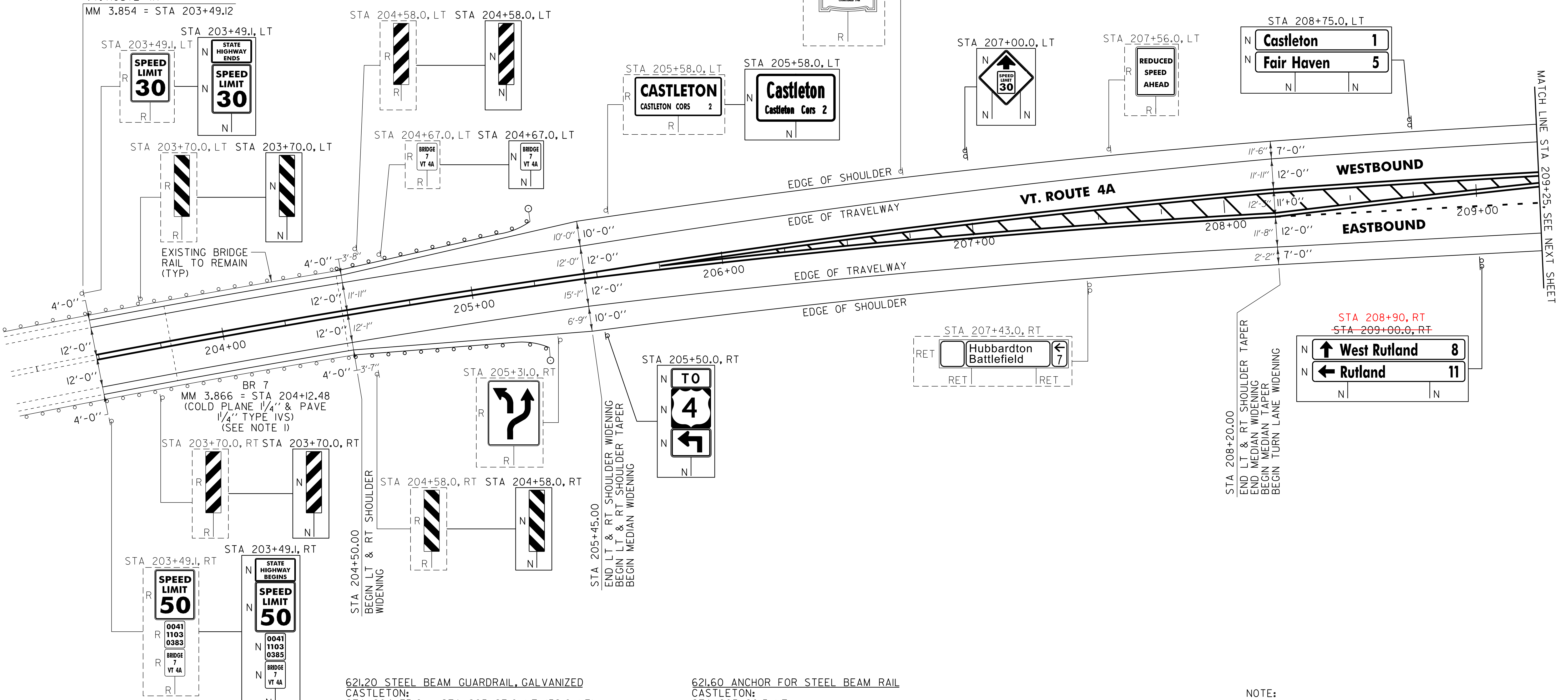
646.602 TEMPORARY 4 INCH WHITE LINE, PAINT
 (ALL LINES WILL INCLUDE EDGE LINE BREAKS AND
 RADIUS FOR TOWN HIGHWAYS)
 CASTLETON:
 STA 203+49.12 - STA 209+25.00 EDGE LINE LT & RT
 STA 208+20.00 - STA 209+25.00 DOTTED LANE LINE RT

646.612 TEMPORARY 4 INCH YELLOW LINE, PAINT
 (ALL LINES WILL INCLUDE C/L BREAKS FOR
 TOWN HIGHWAYS) S=SOLID, D=DASHED
 CASTLETON:
 STA 203+49.12 - STA 205+45.00 LT & RT
 STA 205+45.00 - STA 209+25.00 DOUBLE SOLID MEDIAN LT & RT

646.452 DURABLE 8 INCH YELLOW LINE, THERMOPLASTIC OR
 646.453 DURABLE 8 INCH WYELLOW LINE, EPOXY PAINT OR
 646.454 DURABLE 8 INCH YELLOW LINE, POLYUREA
 CASTLETON:
 STA 205+45.00 - STA 209+25.00 MEDIAN HATCHING LT & RT

675.50 REMOVING SIGNS
 AS SHOWN - 13

BEGIN STP 2705(I)
 CASTLETON
 VT. ROUTE 4A
 MM 3.854 = STA 203+49.12



621.20 STEEL BEAM GUARDRAIL, GALVANIZED
 CASTLETON:
 STA 204+75.0 - STA 205+27.0 LT (52.0 LF)
 STA 204+75.0 - STA 205+27.0 RT (52.0 LF)

621.21HD STEEL BEAM GUARDRAIL, GALVANIZED
 CASTLETON:
 STA 204+50.0 - STA 204+75.0 LT (32.5 LF)
 STA 204+50.0 - STA 204+75.0 RT (32.5 LF)

621.53 TERMINAL CONNECTOR FOR STEEL BEAM GUARDRAIL
 CASTLETON:
 STA 204+48.0 - STA 204+50.0 LT
 STA 204+48.0 - STA 204+50.0 RT

621.60 ANCHOR FOR STEEL BEAM RAIL
 CASTLETON:
 STA 205+20.5 LT
 STA 205+20.5 RT

621.80 REMOVAL AND DISPOSAL OF GUARDRAIL
 CASTLETON:
 STA 204+49.0 - STA 205+19.0 LT (70.0 LF)
 STA 204+49.0 - STA 205+24.0 RT (75.0 LF)

676.10 DELINEATOR WITH STEEL POST
 CASTLETON:
 STA 205+27.0 LT
 STA 205+27.0 RT

SIGN LEGEND
 R = REMOVE
 S = SALVAGE
 N = NEW
 RET = RETAIN
 B-B = BACK TO BACK
 EXISTING = - - - - -
 NEW = _____
 R = RETURN TO TOWN
 OF CASTLETON

NOTE:
 I. SEE SHEET 82 FOR BR 7 DETAILS.

PROJECT LAYOUT SHEET #1	NOT TO SCALE	
	PROJECT NAME: CASTLETON - WEST RUTLAND	
	PROJECT NUMBER: STP 2705(I)	
	FILE NAME: p07cl68.dgn	PLOT DATE: 04-JUN-2013 09:2
PROJECT LEADER: D.E.G.	DRAWN BY: W.G.P.	
DESIGNED BY: M.J.M.	CHECKED BY: D.E.G.	
IPARM FILE: p07cl68I01.i	SHEET 22 OF 152	