

646.402 DURABLE 4 INCH WHITE LINE, THERMOPLASTIC OR
 646.403 DURABLE 4 INCH WHITE LINE, EXPOXY PAINT OR
 646.404 DURABLE 4 INCH WHITE LINE, POLYUREA
 (ALL LINES WILL INCLUDE EDGE LINE BREAKS AND
 RADIUS FOR TOWN HIGHWAYS)
 CASTLETON:
 STA 118+00.00 - STA 123+50.00 EDGE LINE LT & RT

646.412 DURABLE 4 INCH YELLOW LINE, THERMOPLASTIC OR
 646.413 DURABLE 4 INCH YELLOW LINE, EXPOXY PAINT OR
 646.414 DURABLE 4 INCH YELLOW LINE, POLYUREA
 (ALL LINES WILL INCLUDE C/L BREAKS FOR
 TOWN HIGHWAYS) S=SOLID, D=DASHED
 CASTLETON: LT C RT
 STA 120+50.00 - STA 123+50.00 S - S
 STA 118+00.00 - STA 118+70.00 MEDIAN EDGE LINE RT
 STA 118+00.00 - STA 118+05.00 MEDIAN EDGE LINE LT
 STA 118+05.00 - STA 118+70.00 DOUBLE SOLID MEDIAN LT
 STA 118+70.00 - STA 120+50.00 DOUBLE SOLID MEDIAN LT & RT
 STA 122+65.44 DOUBLE SOLID LT, TH-68

646.602 TEMPORARY 4 INCH WHITE LINE, PAINT
 (ALL LINES WILL INCLUDE EDGE LINE BREAKS AND
 RADIUS FOR TOWN HIGHWAYS)
 CASTLETON:
 STA 118+00.00 - STA 123+50.00 EDGE LINE LT & RT

646.612 TEMPORARY 4 INCH YELLOW LINE, PAINT
 (ALL LINES WILL INCLUDE C/L BREAKS FOR
 TOWN HIGHWAYS) S=SOLID, D=DASHED
 CASTLETON: LT C RT
 STA 120+50.00 - STA 123+50.00 S - S
 STA 118+00.00 - STA 118+70.00 MEDIAN EDGE LINE RT
 STA 118+00.00 - STA 118+05.00 MEDIAN EDGE LINE LT
 STA 118+05.00 - STA 118+70.00 DOUBLE SOLID MEDIAN LT
 STA 118+70.00 - STA 120+50.00 DOUBLE SOLID MEDIAN LT & RT
 STA 122+65.44 DOUBLE SOLID LT, TH-68

646.442 DURABLE 8 INCH WHITE LINE, THERMOPLASTIC OR
 646.443 DURABLE 8 INCH WHITE LINE, EXPOXY PAINT OR
 646.444 DURABLE 8 INCH WHITE LINE, POLYUREA
 CASTLETON:
 STA 119+76.0 - STA 119+88.0 FIRE HYDRANT NO PARKING ZONE RT

646.452 DURABLE 8 INCH YELLOW LINE, THERMOPLASTIC OR
 646.453 DURABLE 8 INCH YELLOW LINE, EXPOXY PAINT OR
 646.454 DURABLE 8 INCH YELLOW LINE, POLYUREA
 CASTLETON:
 STA 118+70.00 - STA 120+50.00 MEDIAN HATCHING LT & RT

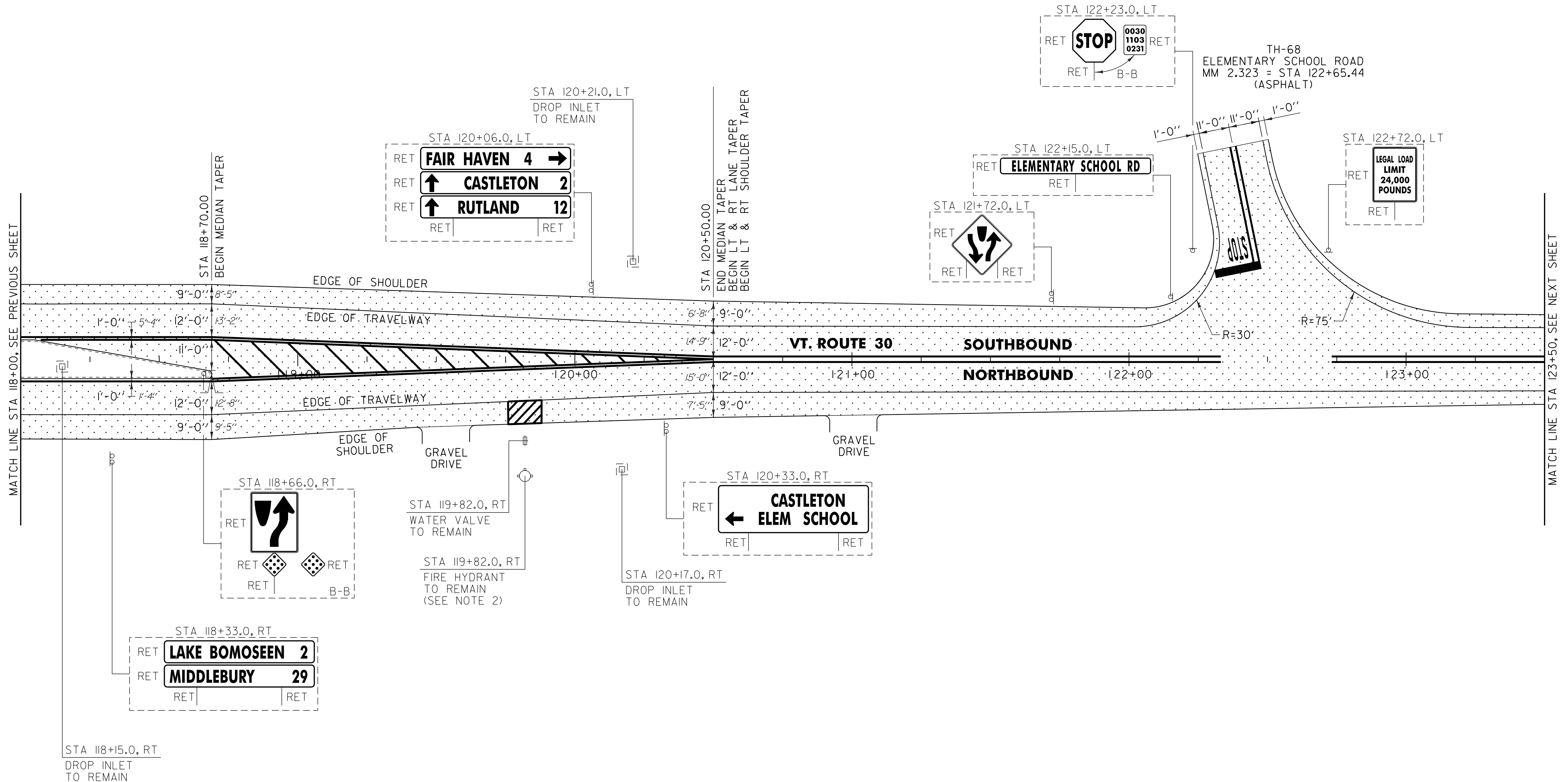
646.482 DURABLE 24 INCH STOP BAR, THERMOPLASTIC OR
 646.483 DURABLE 24 INCH STOP BAR, EXPOXY PAINT OR
 646.484 DURABLE 24 INCH STOP BAR, POLYUREA
 CASTLETON:
 STA 122+65.44 LT, TH-68

646.682 TEMPORARY 24 INCH STOP BAR, PAINT
 CASTLETON:
 STA 122+65.44 LT, TH-68

646.492 DURABLE LETTER OR SYMBOL, THERMOPLASTIC OR
 646.493 DURABLE LETTER OR SYMBOL, EXPOXY PAINT
 CASTLETON:
 STA 122+65.44 LT, TH-68 "S,T,O,P" (4 EA)

646.692 TEMPORARY LETTER OR SYMBOL, PAINT
 CASTLETON:
 STA 122+65.44 LT, TH-68, "S,T,O,P" (8 EA)

646.81 PAINTED CURB
 CASTLETON:
 STA 118+00.0 - STA 118+70.0 LT (70.0 LF)
 STA 118+40.0 - STA 118+70.0 RT (30.0 LF)



NOTES:
 1. PAVING LIMIT ON ALL TOWN HIGHWAYS SHALL BE MEASURED 25 FT BACK FROM VT. ROUTE 30 EDGE OF SHOULDER UNLESS DENOTED OTHERWISE ON THE PLANS OR AS DIRECTED BY THE RESIDENT ENGINEER.
 2. SEE SHEET 8 FOR FIRE HYDRANT PAVEMENT MARKING DETAIL.



SIGN LEGEND
 R = REMOVE
 S = SALVAGE
 N = NEW
 RET = RETAIN
 B-B = BACK TO BACK
 EXISTING = - - - - -
 NEW = _____

NOT TO SCALE	
PROJECT LAYOUT SHEET #8	PROJECT NAME: CASTLETON
	PROJECT NUMBER: STP 2909(1)
	FILE NAME: p10c212.dgn
	PROJECT LEADER: D.E.G.
DESIGNED BY: M.J.M.	PLOT DATE: 04-JUN-2013 09:1
IPARM FILE: p10c212108.1	DRAWN BY: W.G.P.
	CHECKED BY: D.E.G.
	SHEET 136 OF 152