

646.402 DURABLE 4 INCH WHITE LINE, THERMOPLASTIC OR  
 646.403 DURABLE 4 INCH WHITE LINE, EPOXY PAINT OR  
 646.404 DURABLE 4 INCH WHITE LINE, POLYUREA  
 (ALL LINES WILL INCLUDE EDGE LINE BREAKS AND  
 RADIUS FOR TOWN HIGHWAYS)  
 CASTLETON:  
 STA 188+75.00 - STA 194+75.00 EDGE LINE LT & RT

646.412 DURABLE 4 INCH YELLOW LINE, THERMOPLASTIC OR  
 646.413 DURABLE 4 INCH YELLOW LINE, EPOXY PAINT OR  
 646.414 DURABLE 4 INCH YELLOW LINE, POLYUREA  
 (ALL LINES WILL INCLUDE C/L BREAKS FOR  
 TOWN HIGHWAYS) S=SOLID, D=DASHED  
 CASTLETON:  
 STA 188+75.00 - STA 194+75.00 LT S RT S  
 STA 190+76.64 DOUBLE SOLID LT, TH-7

646.602 TEMPORARY 4 INCH WHITE LINE, PAINT  
 (ALL LINES WILL INCLUDE EDGE LINE BREAKS AND  
 RADIUS FOR TOWN HIGHWAYS)  
 CASTLETON:  
 STA 188+75.00 - STA 194+75.00 LT S RT S  
 STA 190+76.64 DOUBLE SOLID LT, TH-7

646.612 TEMPORARY 4 INCH YELLOW LINE, PAINT  
 (ALL LINES WILL INCLUDE C/L BREAKS FOR  
 TOWN HIGHWAYS) S=SOLID, D=DASHED  
 CASTLETON:  
 STA 188+75.00 - STA 194+75.00 LT S RT S  
 STA 190+76.64 DOUBLE SOLID LT, TH-7

646.442 DURABLE 8 INCH WHITE LINE, THERMOPLASTIC OR  
 646.443 DURABLE 8 INCH WHITE LINE, EPOXY PAINT OR  
 646.444 DURABLE 8 INCH WHITE LINE, POLYUREA  
 CASTLETON:  
 STA 193+52.0 - STA 193+64.0 FIRE HYDRANT NO PARKING ZONE LT

646.482 DURABLE 24 INCH STOP BAR, THERMOPLASTIC OR  
 646.483 DURABLE 24 INCH STOP BAR, EPOXY PAINT OR  
 646.484 DURABLE 24 INCH STOP BAR, POLYUREA  
 CASTLETON:  
 STA 190+76.64 LT, TH-7

646.492 DURABLE LETTER OR SYMBOL, THERMOPLASTIC OR  
 646.493 DURABLE LETTER OR SYMBOL, EPOXY PAINT  
 CASTLETON:  
 STA 190+76.64 LT, TH-7 "S,T,O,P" (4 EA)

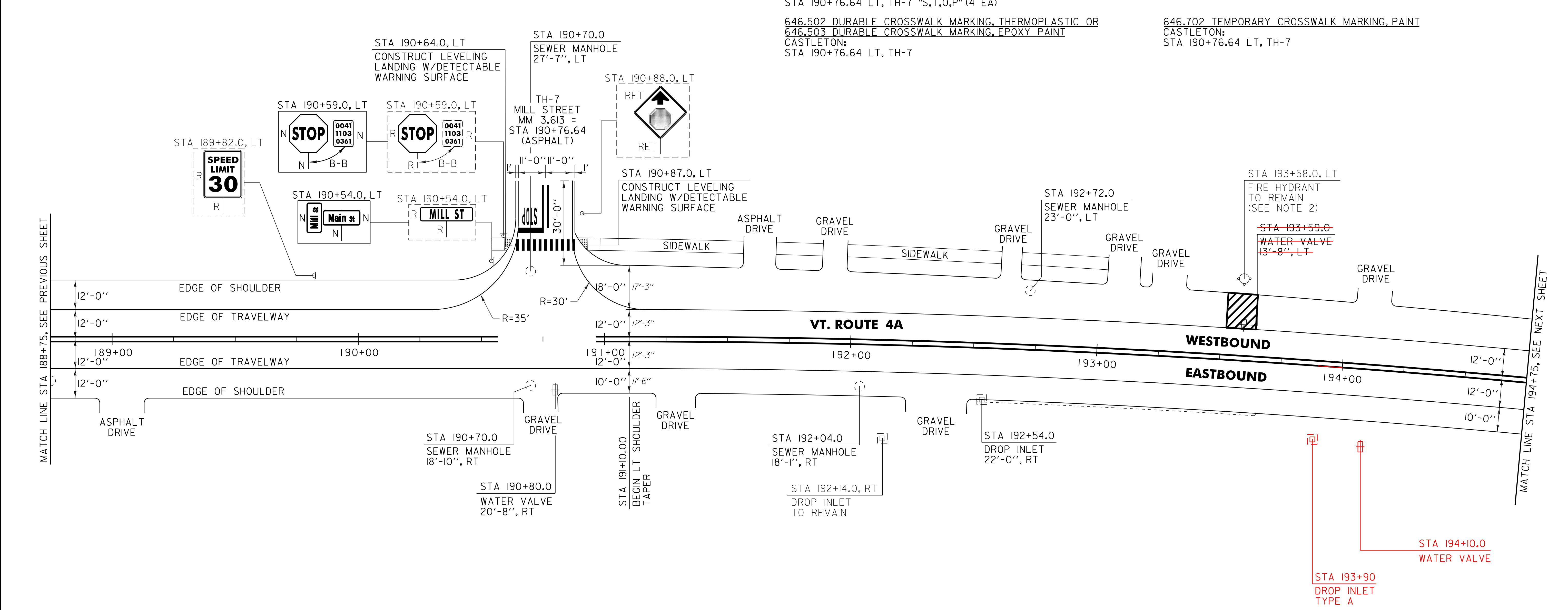
646.502 DURABLE CROSSWALK MARKING, THERMOPLASTIC OR  
 646.503 DURABLE CROSSWALK MARKING, EPOXY PAINT  
 CASTLETON:  
 STA 190+76.64 LT, TH-7

675.50 REMOVING SIGNS  
 AS SHOWN - 4

646.682 TEMPORARY 24 INCH STOP BAR, PAINT  
 CASTLETON:  
 STA 190+76.64 LT, TH-7

646.692 TEMPORARY LETTER OR SYMBOL, PAINT  
 CASTLETON:  
 STA 190+76.64 LT, TH-7 "S,T,O,P" (8 EA)

646.702 TEMPORARY CROSSWALK MARKING, PAINT  
 CASTLETON:  
 STA 190+76.64 LT, TH-7



604.412, 604.415 OR 604.418 REHAB. DROP INLETS, CATCH  
 BASINS OR MANHOLES (SEE NOTE 1)  
 CASTLETON:  
 STA 192+54.0 RT

604.42 CHANGING ELEVATION OF SEWER MANHOLES  
 CASTLETON:  
 STA 190+70.0 LT  
 STA 190+70.0 RT  
 STA 192+04.0 RT  
 STA 192+72.0 LT

629.20 ADJUST ELEVATION OF VALVE BOX  
 CASTLETON:  
 STA 190+80.0 RT  
 STA 193+59.0 LT

618.10 PORTLAND CEMENT CONCRETE SIDEWALK, 5 INCH  
 CASTLETON:  
 STA 190+64.0 LT (3.9 SY)  
 STA 190+87.0 LT (3.9 SY)

618.30 DETECTABLE WARNING SURFACE  
 CASTLETON:  
 STA 190+64.0 LT (10.0 SF)  
 STA 190+87.0 LT (10.0 SF)

SIGN LEGEND  
 R = REMOVE  
 S = SALVAGE  
 N = NEW  
 RET = RETAIN  
 B-B = BACK TO BACK  
 EXISTING = - - - - -  
 NEW = \_\_\_\_\_

NOTES:  
 1. THE CONTRACTOR SHALL REHAB. THE EXISTING DROP INLETS, CATCH BASINS OR MANHOLES TO A DEPTH AS DIRECTED BY THE RESIDENT ENGINEER. ALL REHAB. WORK WILL BE PAID FOR UNDER THE APPLICABLE REHAB. ITEM AS DIRECTED BY THE RESIDENT ENGINEER. ALL EXISTING UTILITIES MARKED "TO REMAIN" SHALL NOT BE ALTERED OR REHABILITATED UNLESS DIRECTED OTHERWISE BY THE RESIDENT ENGINEER.  
 2. SEE SHEET 8 FOR FIRE HYDRANT PAVEMENT MARKING DETAIL.

<b>PROJECT LAYOUT SHEET #8</b>	<b>NOT TO SCALE</b>	
	PROJECT NAME: CASTLETON	PROJECT NUMBER: STP 2908(1)
	FILE NAME: p10c210.dgn	PLOT DATE: 04-JUN-2013 09:1
	PROJECT LEADER: D.E.G. DESIGNED BY: M.J.M. IPARM FILE: p10c210I08.i	DRAWN BY: W.G.P. CHECKED BY: D.E.G. SHEET 105 OF 152