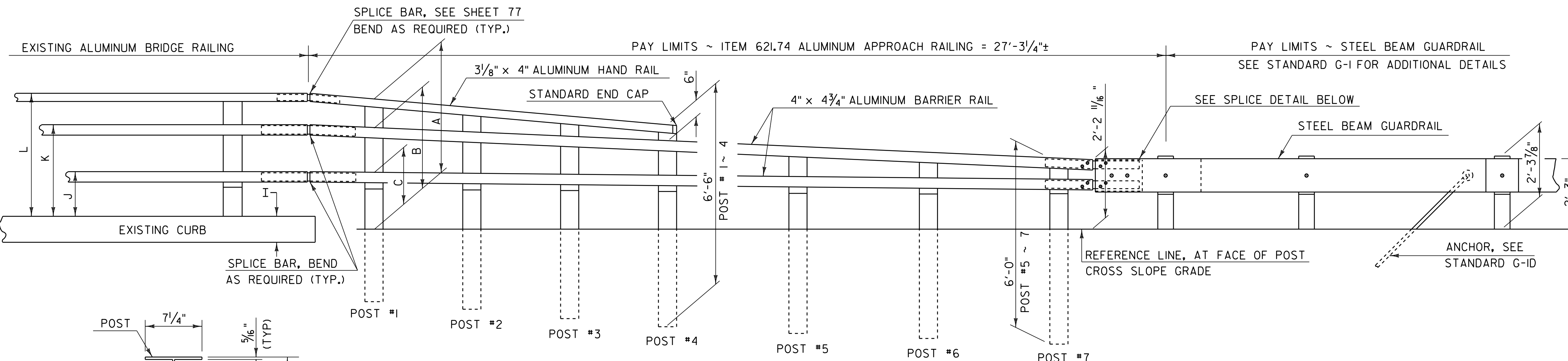
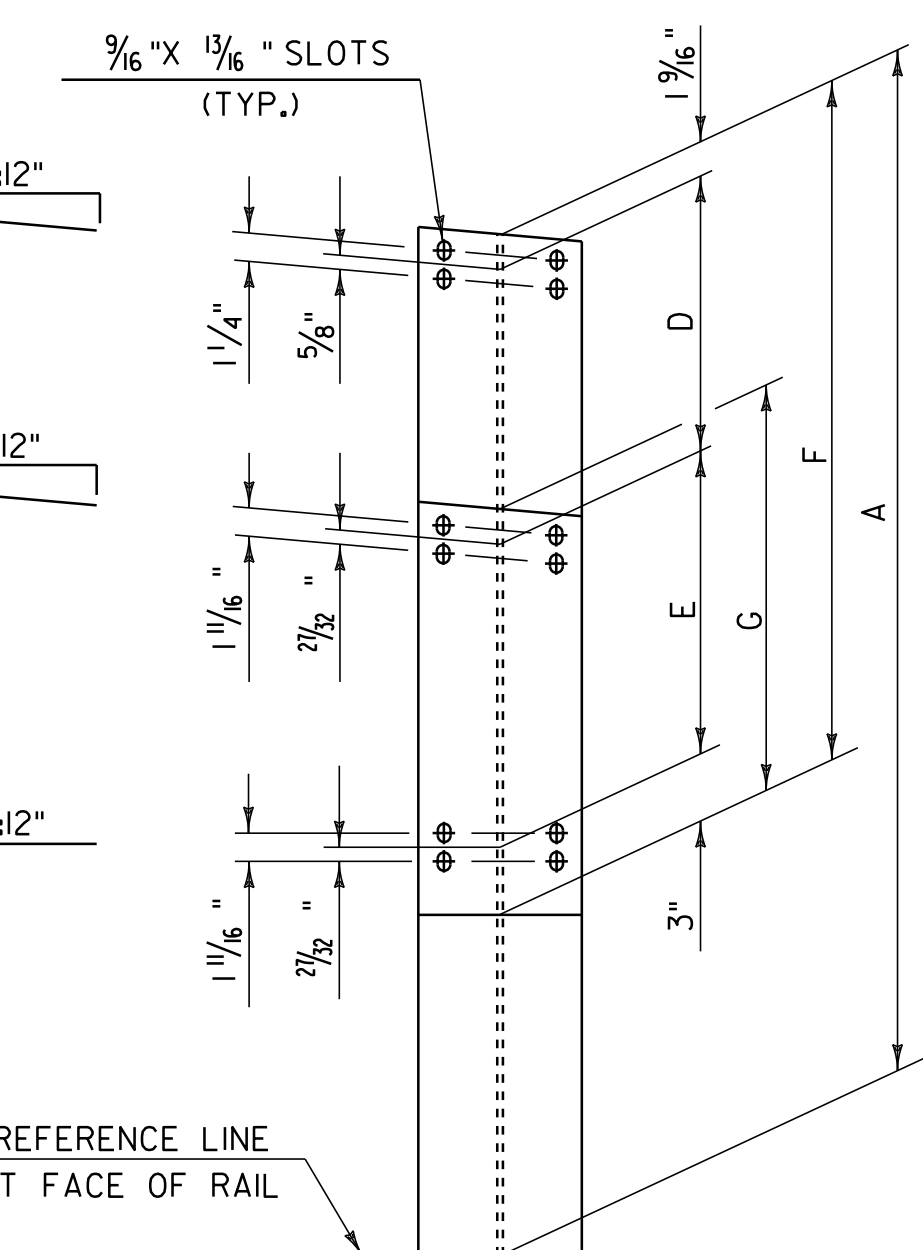
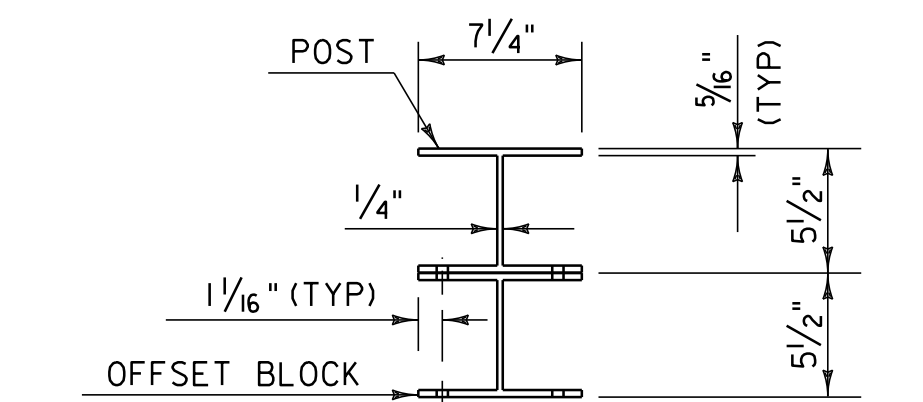


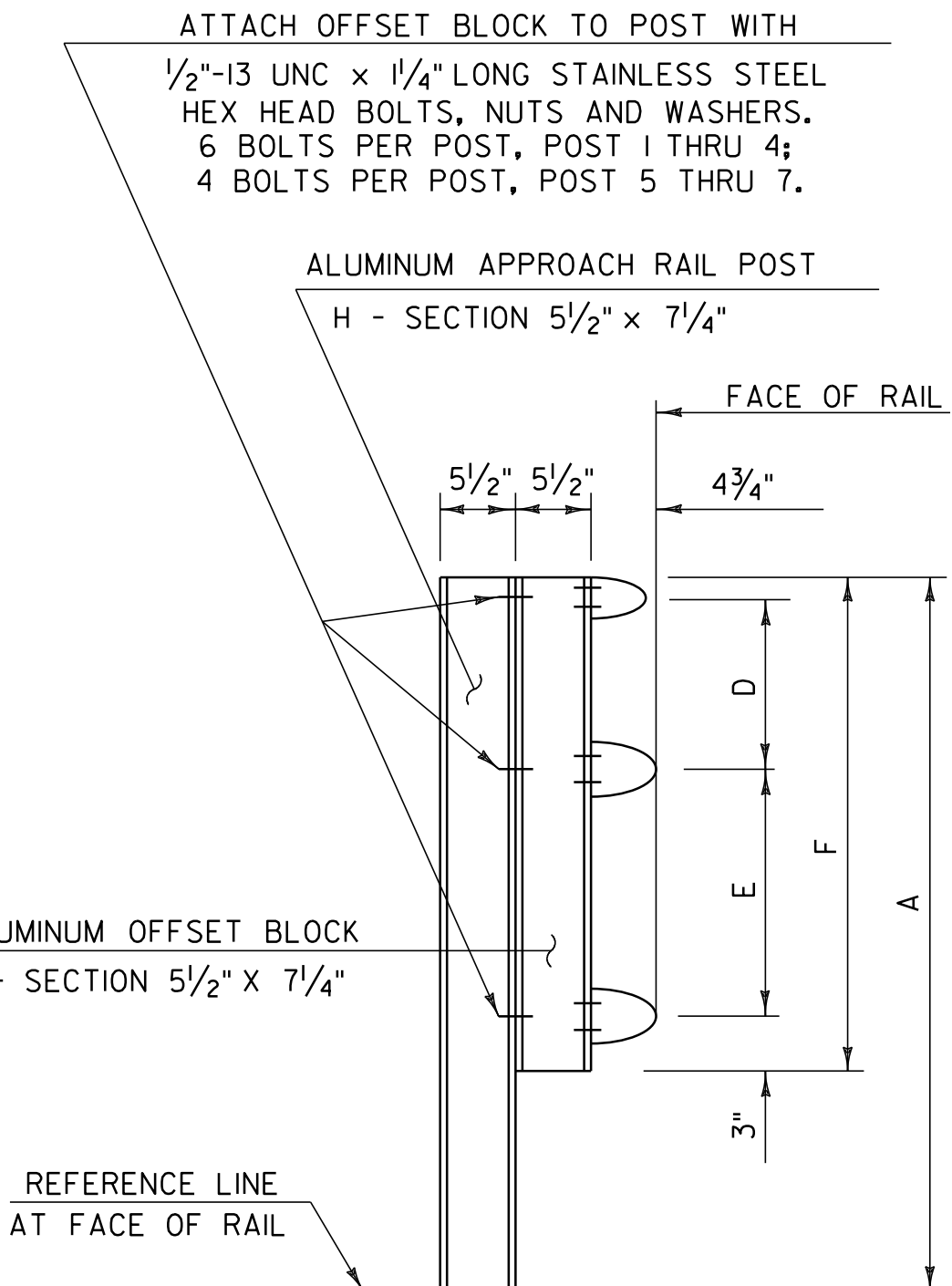
PLAN



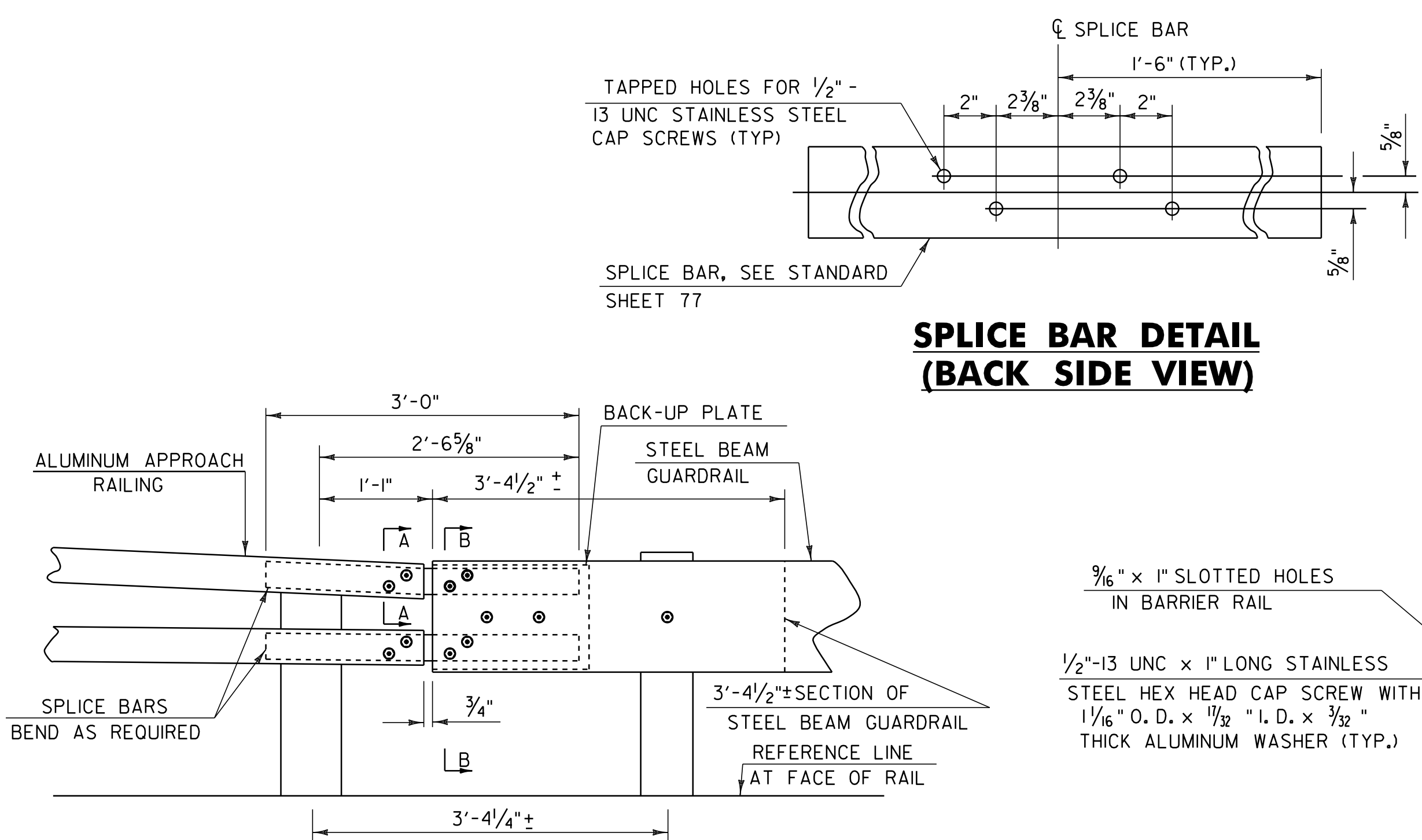
ELEVATION



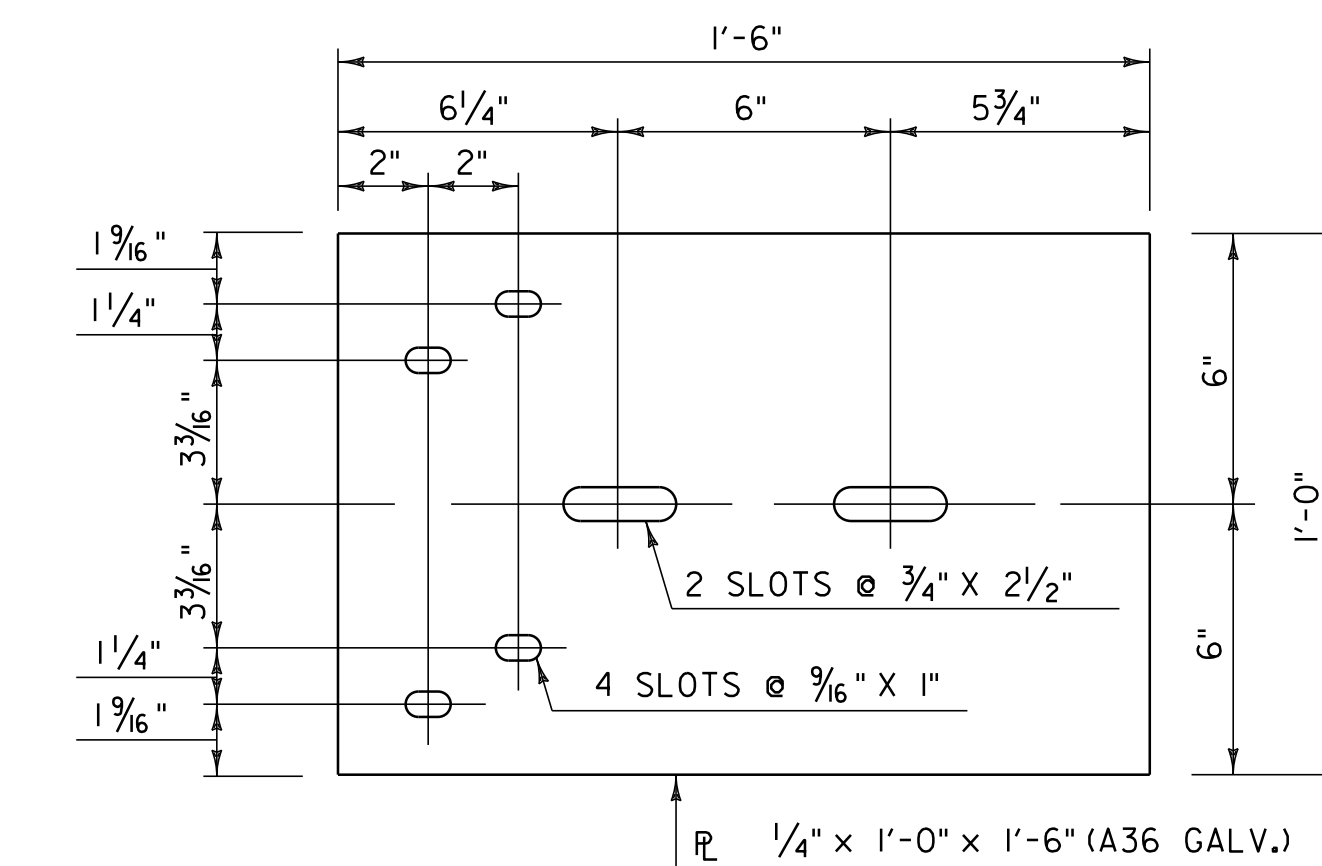
POST ELEVATION & SECTION
(SEE NOTE 7)



RAIL DETAIL
(SEE NOTE 7)

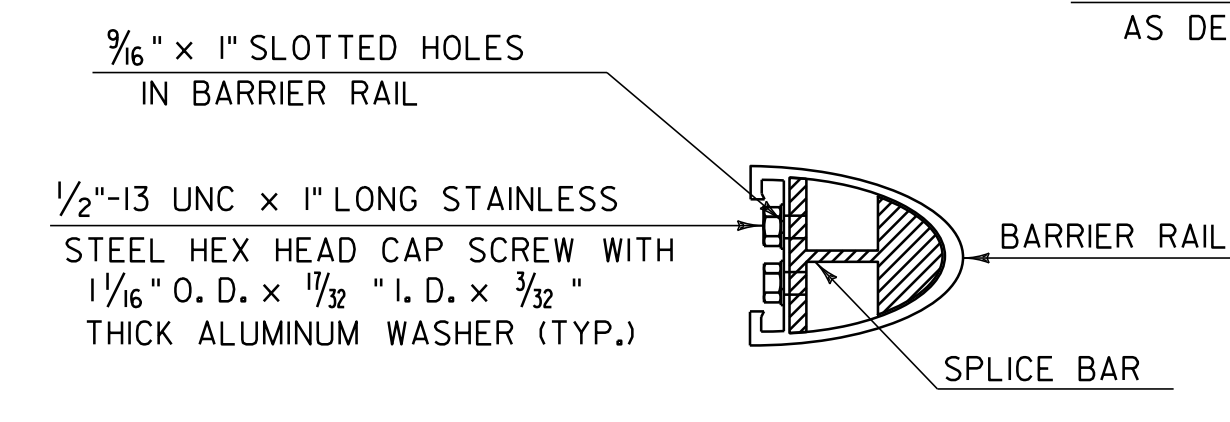


SPLICE DETAIL

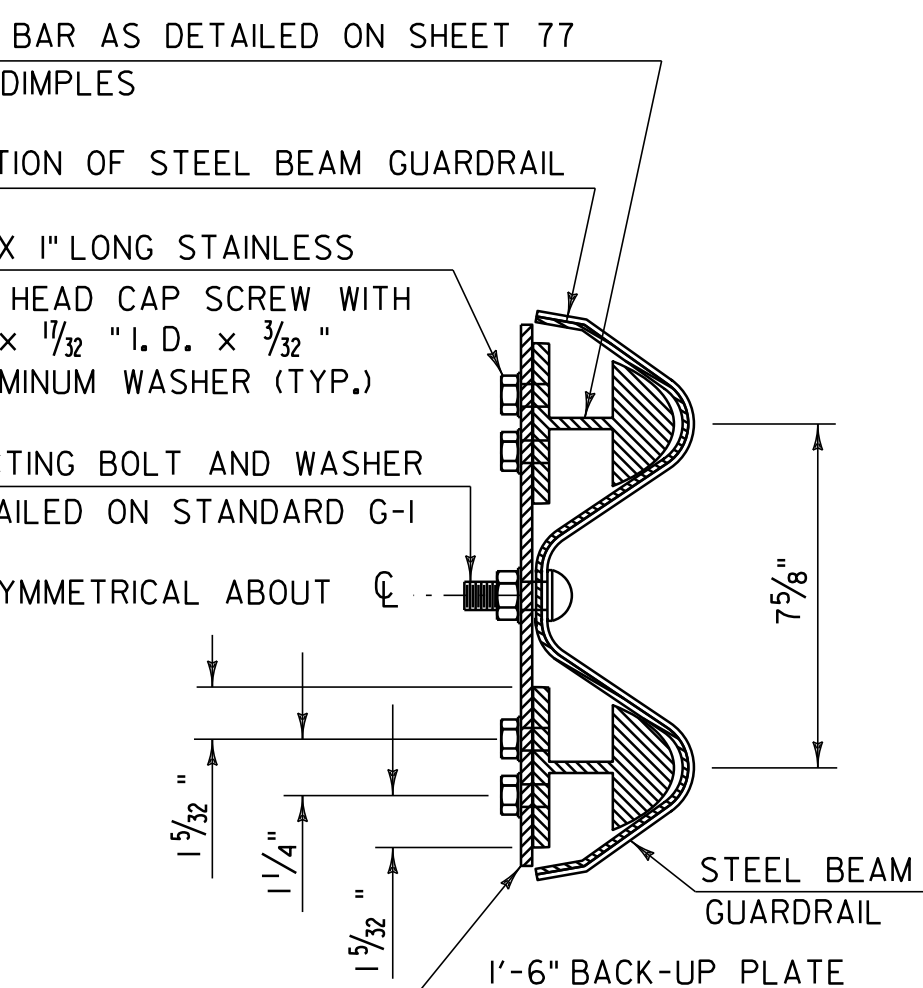


BACK-UP PLATE DETAIL

SPLICE BAR DETAIL (BACK SIDE VIEW)



SECTION A - A



SECTION B - B

NOTES

1. POST 1 THROUGH 7 SHALL BE EXTRUDED ALUMINUM.
2. ALL STRUCTURAL STEEL SHALL BE ASTM A-36 GALVANIZED AFTER FABRICATION.
3. ALL ITEMS NOT OTHERWISE INDICATED SHALL MEET THE SPECIFICATION REQUIREMENTS OF THE STANDARD SHEETS ON WHICH THEY ARE DETAILED.
4. SEE VAOT STANDARD G-1 FOR STEEL BEAM GUARDRAIL DETAILS.
5. THE COST OF ALL MATERIALS AND LABOR FOR THE SPLICE BETWEEN THE ALUMINUM APPROACH RAILING AND THE STEEL BEAM GUARDRAIL SHALL BE INCIDENTAL TO ITEM 621.74 ALUMINUM APPROACH RAILING.
6. DIMENSIONS SHOWN ARE FROM A REFERENCE LINE AT THE FACE OF POST FOR A NORMAL CROWNED SECTION. APPROPRIATE CORRECTIONS SHALL BE MADE FOR CROSS SLOPES OTHER THAN A NORMAL SECTION.
7. SEE SHEET 78 FOR ALUMINUM APPROACH RAIL DIMENSIONS TABLE.

NOT TO SCALE ALUMINUM APPROACH RAILING CONNECTION DETAIL SHEET #1	PROJECT NAME: CASTLETON - WEST RUTLAND	PLOT DATE: 04-JUN-2013 09:14
	PROJECT NUMBER: STP 2705(1)	DRAWN BY: W.G.P.
	FILE NAME: p07cl68.dgn	CHECKED BY: D.E.G.
	PROJECT LEADER: D.E.G.	SHEET 76 OF 152
	DESIGNED BY: M.J.M.	
	IPARM FILE: p07cl68aar1.i	

NOTE:
1. REFERENCE THIS SHEET WITH SHEETS 77 & 78 ALONG WITH SHEET 86 FOR BR 2 DETAILS.