

646.402 DURABLE 4 INCH WHITE LINE, THERMOPLASTIC OR
 646.403 DURABLE 4 INCH WHITE LINE, EPOXY PAINT OR
 646.404 DURABLE 4 INCH WHITE LINE, POLYUREA
 (ALL LINES WILL INCLUDE EDGE LINE BREAKS AND
 RADIUS FOR TOWN HIGHWAYS)
 CASTLETON STATE HIGHWAY:
 STA 2+00.00 - STA 8+00.00 EDGE LINE LT & RT
 STA 2+00.00 - STA 3+25.00 DOTTED LANE LINE LT

646.602 TEMPORARY 4 INCH WHITE LINE, PAINT
 (ALL LINES WILL INCLUDE EDGE LINE BREAKS AND
 RADIUS FOR TOWN HIGHWAYS)
 CASTLETON STATE HIGHWAY:
 STA 2+00.00 - STA 8+00.00 EDGE LINE LT & RT
 STA 2+00.00 - STA 3+25.00 DOTTED LANE LINE LT

646.412 DURABLE 2 INCH YELLOW LINE, THERMOPLASTIC OR
 646.413 DURABLE 2 INCH YELLOW LINE, EPOXY PAINT OR
 646.414 DURABLE 2 INCH YELLOW LINE, POLYUREA
 (ALL LINES WILL INCLUDE C/L BREAKS FOR
 TOWN HIGHWAYS) S=SOLID, D=DASHED
 CASTLETON STATE HIGHWAY:
 STA 3+25.00 - STA 8+00.00 LT & RT
 STA 3+25.00 - STA 8+00.00 S - S
 STA 2+00.00 - STA 3+25.00 DOUBLE SOLID MEDIAN LT & RT

646.462 DURABLE 12 INCH WHITE LINE, THERMOPLASTIC OR
 646.463 DURABLE 12 INCH WHITE LINE, EPOXY PAINT OR
 646.464 DURABLE 12 INCH WHITE LINE, POLYUREA
 CASTLETON STATE HIGHWAY:
 STA 6+23.04 HATCHED AREA LT, RAMP A

646.612 TEMPORARY 4 INCH YELLOW LINE, PAINT
 (ALL LINES WILL INCLUDE C/L BREAKS FOR
 TOWN HIGHWAYS) S=SOLID, D=DASHED
 CASTLETON STATE HIGHWAY:
 STA 3+25.00 - STA 8+00.00 LT & RT
 STA 2+00.00 - STA 3+25.00 DOUBLE SOLID MEDIAN LT & RT

646.452 DURABLE 8 INCH YELLOW LINE, THERMOPLASTIC OR
 646.453 DURABLE 8 INCH YELLOW LINE, EPOXY PAINT OR
 646.454 DURABLE 8 INCH YELLOW LINE, POLYUREA
 CASTLETON STATE HIGHWAY:
 STA 2+00.00 - STA 3+25.00 MEDIAN HATCHING LT & RT

646.482 DURABLE 24 INCH STOP BAR, THERMOPLASTIC OR
 646.483 DURABLE 24 INCH STOP BAR, EPOXY PAINT OR
 646.484 DURABLE 24 INCH STOP BAR, POLYUREA
 CASTLETON:
 STA 6+23.04 LT RAMP A
 STA 6+23.04 LT RAMP A

646.512 DURABLE RAILROAD CROSSING SYMBOL, THERMOPLASTIC OR
 646.513 DURABLE RAILROAD CROSSING SYMBOL, EPOXY PAINT
 CASTLETON STATE HIGHWAY:
 STA 2+06.0 RT (1EA)
 STA 5+75.0 LT (1EA)

646.712 TEMPORARY RAILROAD CROSSING SYMBOL, PAINT
 CASTLETON STATE HIGHWAY:
 STA 2+06.0 RT (2 EA)
 STA 5+75.0 LT (2 EA)

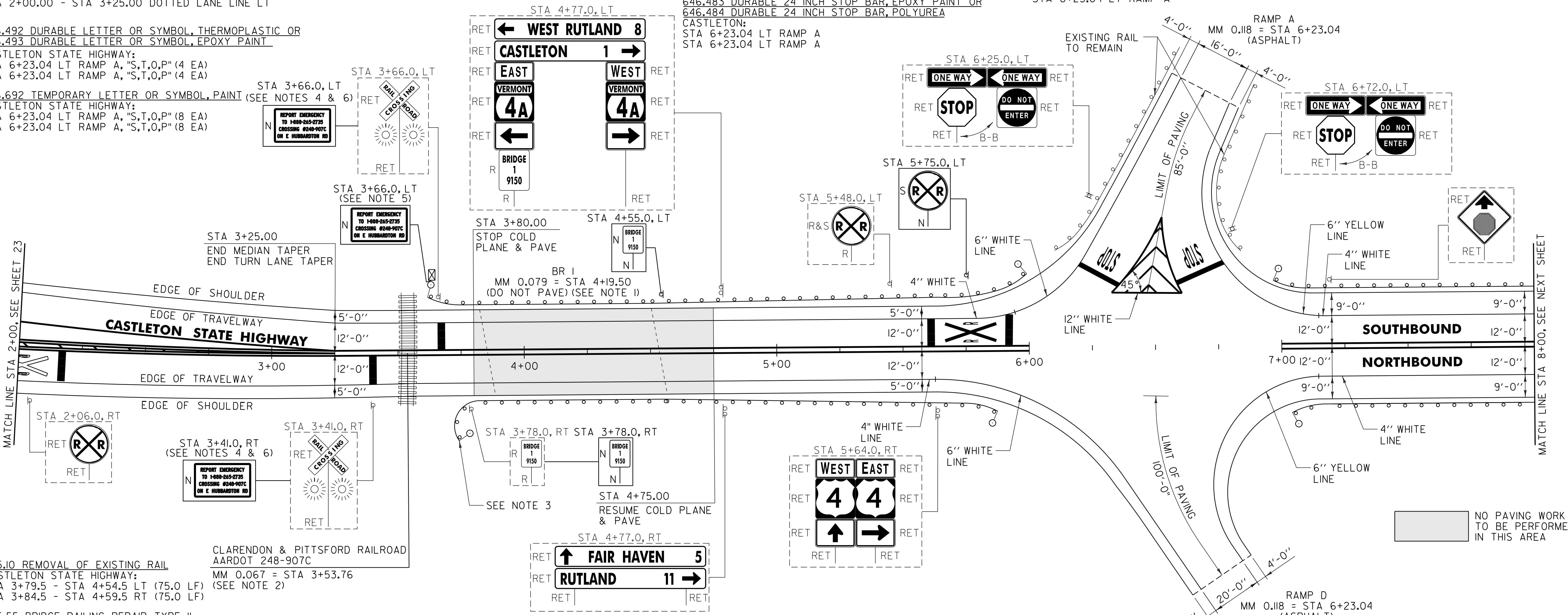
646.682 TEMPORARY 24 INCH STOP BAR, PAINT
 CASTLETON:
 STA 6+23.04 LT RAMP A
 STA 6+23.04 LT RAMP A

646.510 REMOVING SIGNS
 AS SHOWN - 2

646.515 REMOVING SIGNS
 AS SHOWN - 1

646.492 DURABLE LETTER OR SYMBOL, THERMOPLASTIC OR
 646.493 DURABLE LETTER OR SYMBOL, EPOXY PAINT
 CASTLETON STATE HIGHWAY:
 STA 6+23.04 LT RAMP A, "S,T,O,P" (4 EA)
 STA 6+23.04 LT RAMP A, "S,T,O,P" (4 EA)

646.692 TEMPORARY LETTER OR SYMBOL, PAINT
 (SEE NOTES 4 & 6)
 CASTLETON STATE HIGHWAY:
 STA 6+23.04 LT RAMP A, "S,T,O,P" (8 EA)
 STA 6+23.04 LT RAMP A, "S,T,O,P" (8 EA)



525.10 REMOVAL OF EXISTING RAIL
 CASTLETON STATE HIGHWAY:
 STA 3+79.5 - STA 4+54.5 LT (75.0 LF)
 STA 3+84.5 - STA 4+59.5 RT (75.0 LF)

646.422 DURABLE 6 INCH WHITE LINE, THERMOPLASTIC OR
 646.423 DURABLE 6 INCH WHITE LINE, EPOXY PAINT OR
 646.424 DURABLE 6 INCH WHITE LINE, POLYUREA
 (ALL LINES WILL INCLUDE EDGE LINE BREAKS AND
 RADIUS FOR TOWN HIGHWAYS)
 CASTLETON STATE HIGHWAY:
 STA 6+23.04 LT, RAMP A EDGE LINE
 STA 6+23.04 RT, RAMP D EDGE LINE

646.432 DURABLE 6 INCH YELLOW LINE, THERMOPLASTIC OR
 646.433 DURABLE 6 INCH YELLOW LINE, EPOXY PAINT OR
 646.434 DURABLE 6 INCH YELLOW LINE, POLYUREA
 (ALL LINES WILL INCLUDE C/L BREAKS FOR
 TOWN HIGHWAYS) S=SOLID, D=DASHED
 CASTLETON STATE HIGHWAY:
 STA 6+23.04 LT, RAMP A EDGE LINE
 STA 6+23.04 RT, RAMP D EDGE LINE

646.622 TEMPORARY 6 INCH WHITE LINE, PAINT
 (ALL LINES WILL INCLUDE EDGE LINE BREAKS AND
 RADIUS FOR TOWN HIGHWAYS)
 CASTLETON STATE HIGHWAY:
 STA 6+23.04 LT, RAMP A EDGE LINE
 STA 6+23.04 RT, RAMP D EDGE LINE

646.632 TEMPORARY 6 INCH YELLOW LINE, PAINT
 (ALL LINES WILL INCLUDE EDGE LINE BREAKS AND
 RADIUS FOR TOWN HIGHWAYS)
 CASTLETON STATE HIGHWAY:
 STA 6+23.04 LT, RAMP A EDGE LINE
 STA 6+23.04 RT, RAMP D EDGE LINE

525.55 BRIDGE RAILING REPAIR, TYPE II
 CASTLETON STATE HIGHWAY:
 STA 3+79.5 - STA 4+54.5 LT (75.0 LF)
 STA 3+84.5 - STA 4+59.5 RT (75.0 LF)

621.20 STEEL BEAM GUARDRAIL, GALVANIZED
 CASTLETON STATE HIGHWAY:
 STA 3+65.0 - STA 3+79.5 LT (14.5 LF)
 STA 3+73.0 - STA 3+84.5 RT (28.5 LF)
 STA 4+79.5 - STA 6+06.5 LT (127.0 LF)
 STA 4+84.5 - STA 5+99.0 RT (114.5 LF)
 STA 6+93.0 - STA 8+00.0 LT (107.0 LF)
 STA 7+03.0 - STA 8+00.0 RT (97.0 LF)

621.80 REMOVAL AND DISPOSAL OF GUARDRAIL
 CASTLETON STATE HIGHWAY:
 STA 3+62.0 - STA 3+79.5 LT (17.5 LF)
 STA 3+73.0 - STA 3+84.5 RT (11.5 LF)
 STA 4+54.5 - STA 6+01.0 LT (150.0 LF)
 STA 4+59.5 - STA 5+91.0 RT (135.0 LF)
 STA 6+97.0 - STA 8+00.0 LT (103.0 LF)
 STA 7+04.0 - STA 8+00.0 RT (96.0 LF)

621.21 HD STEEL BEAM GUARDRAIL, GALVANIZED
 CASTLETON STATE HIGHWAY:
 STA 4+54.5 - STA 4+79.5 LT (32.5 LF)
 STA 4+59.5 - STA 4+84.5 RT (32.5 LF)

621.60 ANCHOR FOR STEEL BEAM RAIL
 CASTLETON STATE HIGHWAY:
 STA 3+71.5 LT
~~STA 3+73.0 RT~~
 STA 3+73.0 RT
 STA 5+92.5 RT
 STA 6+00.0 LT
 STA 6+99.5 LT
 STA 7+09.5 RT

621.21 HD STEEL BEAM GUARDRAIL, GALVANIZED
 CASTLETON STATE HIGHWAY:
 STA 4+54.5 - STA 4+79.5 LT (32.5 LF)
 STA 4+59.5 - STA 4+84.5 RT (32.5 LF)

621.60 ANCHOR FOR STEEL BEAM RAIL
 CASTLETON STATE HIGHWAY:
 STA 3+71.5 LT
~~STA 3+73.0 RT~~
 STA 3+73.0 RT
 STA 5+92.5 RT
 STA 6+00.0 LT
 STA 6+99.5 LT
 STA 7+09.5 RT

676.10 DELINEATOR WITH STEEL POST
 CASTLETON STATE HIGHWAY:
 STA 3+65.0 LT
 STA 3+73.0 RT
 STA 5+99.0 RT
 STA 6+06.5 LT
 STA 6+93.0 LT
 STA 7+03.0 RT

676.10 DELINEATOR WITH STEEL POST
 CASTLETON STATE HIGHWAY:
 STA 3+65.0 LT
 STA 3+73.0 RT
 STA 5+99.0 RT
 STA 6+06.5 LT
 STA 6+93.0 LT
 STA 7+03.0 RT

676.10 DELINEATOR WITH STEEL POST
 CASTLETON STATE HIGHWAY:
 STA 3+65.0 LT
 STA 3+73.0 RT
 STA 5+99.0 RT
 STA 6+06.5 LT
 STA 6+93.0 LT
 STA 7+03.0 RT

676.10 DELINEATOR WITH STEEL POST
 CASTLETON STATE HIGHWAY:
 STA 3+65.0 LT
 STA 3+73.0 RT
 STA 5+99.0 RT
 STA 6+06.5 LT
 STA 6+93.0 LT
 STA 7+03.0 RT

- NOTES:
- SEE SHEET 85 FOR BRIDGE I DETAILS.
 - SEE SHEETS 87 THRU 89 FOR CLARENDON & PITTSFORD RAILROAD AARDOT 248-907C GRADE CROSSING DETAIL SHEETS.
 - THE CONTRACTOR SHALL INSTALL A NEW 16' RADIUS PANEL WITH ANCHORS AT EACH END AS DIRECTED BY THE RESIDENT ENGINEER. ONLY ONE ANCHOR INSTALLED DUE TO INSUFFICIENT AREA TO INSTALL TWO PER RE.
 - PROPOSED EMERGENCY CONTACT SIGN SHALL BE MOUNTED ON THE EXISTING CROSSING SIGNAL AS DIRECTED BY THE RESIDENT ENGINEER. THE CONTRACTOR SHALL COORDINATE THE SIGN INSTALLATION WITH THE RAILROAD.
 - PROPOSED EMERGENCY CONTACT SIGN SHALL BE MOUNTED TO EXISTING SIGNAL CASE AS DIRECTED BY THE RESIDENT ENGINEER. THE CONTRACTOR SHALL COORDINATE THE SIGN INSTALLATION WITH THE RAILROAD.
 - A STRIP OF RETROREFLECTIVE WHITE MATERIAL NOT LESS THAN 2 INCHES WIDE SHALL BE USED ON THE BACK OF EACH BLADE OF THE CROSSBUCK SIGN FOR THE ENTIRE LENGTH OF EACH BLADE PER MUTCD SECTION 8B.03. THE CONTRACTOR SHALL COORDINATE THE INSTALLATION OF THE SIGN WITH THE RAILROAD.

SIGN LEGEND
 R = REMOVE
 S = SALVAGE
 N = NEW
 RET = RETAIN
 B-B = BACK TO BACK
 EXISTING = _____
 NEW = _____

PROJECT LAYOUT SHEET #32	NOT TO SCALE	
	PROJECT NAME: CASTLETON - WEST RUTLAND	
	PROJECT NUMBER: STP 2705(1)	
	FILE NAME: p07cl68.dgn	PLOT DATE: 04-JUN-2013 09:14
PROJECT LEADER: D.E.G.	DRAWN BY: W.G.P.	
DESIGNED BY: M.J.M.	CHECKED BY: D.E.G.	
IPARM FILE: p07cl68132.i	SHEET 53 OF 152	