

646.402 DURABLE 4 INCH WHITE LINE, THERMOPLASTIC OR
 646.403 DURABLE 4 INCH WHITE LINE, EPOXY PAINT OR
 646.404 DURABLE 4 INCH WHITE LINE, POLYUREA
 (ALL LINES WILL INCLUDE EDGE LINE BREAKS AND
 RADIUS FOR TOWN HIGHWAYS)
 WEST RUTLAND:
 STA 63+25.00 - STA 69+25.00 EDGE LINE LT & RT

646.412 DURABLE 4 INCH YELLOW LINE, THERMOPLASTIC OR
 646.413 DURABLE 4 INCH YELLOW LINE, EPOXY PAINT OR
 646.414 DURABLE 4 INCH YELLOW LINE, POLYUREA
 (ALL LINES WILL INCLUDE C/L BREAKS FOR
 TOWN HIGHWAYS) S=SOLID, D=DASHED
 WEST RUTLAND:
 STA 63+25.00 - STA 69+25.00 LT C RT
 S - S

646.602 TEMPORARY 4 INCH WHITE LINE, PAINT
 (ALL LINES WILL INCLUDE EDGE LINE BREAKS AND
 RADIUS FOR TOWN HIGHWAYS)
 WEST RUTLAND:
 STA 63+25.00 - STA 69+25.00 EDGE LINE LT & RT

646.612 TEMPORARY 4 INCH YELLOW LINE, PAINT
 (ALL LINES WILL INCLUDE C/L BREAKS FOR
 TOWN HIGHWAYS) S=SOLID, D=DASHED
 WEST RUTLAND:
 STA 63+25.00 - STA 69+25.00 LT C RT
 S - S

646.482 DURABLE 24 INCH STOP BAR, THERMOPLASTIC OR
 646.483 DURABLE 24 INCH STOP BAR, EPOXY PAINT OR
 646.484 DURABLE 24 INCH STOP BAR, POLYUREA
 WEST RUTLAND:
 STA 64+99.68 LT TH-4

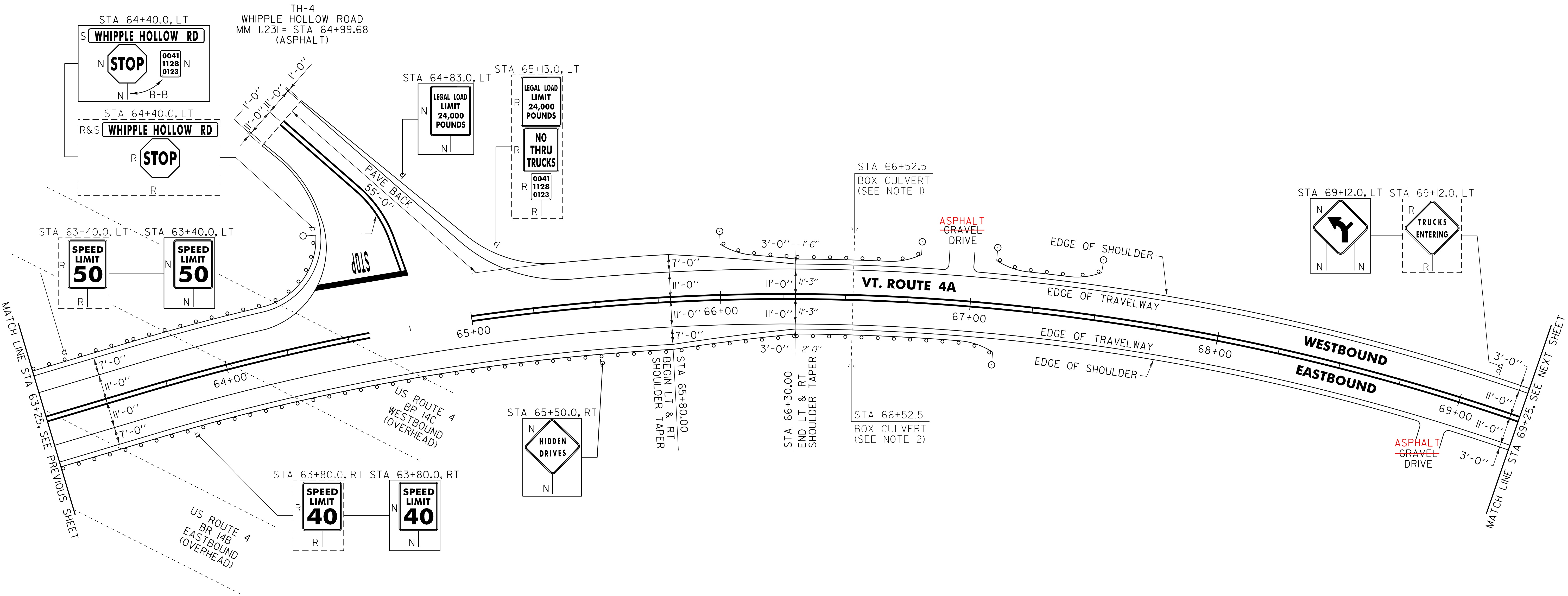
646.492 DURABLE LETTER OR SYMBOL, THERMOPLASTIC OR
 646.493 DURABLE LETTER OR SYMBOL, EPOXY PAINT
 WEST RUTLAND:
 STA 64+99.68 LT TH-4, "S,T,O,P" (4 EA)

646.682 TEMPORARY 24 INCH STOP BAR, PAINT
 WEST RUTLAND:
 STA 64+99.68 LT TH-4

646.692 TEMPORARY LETTER OR SYMBOL, PAINT
 WEST RUTLAND:
 STA 64+99.68 LT TH-4, "S,T,O,P" (8 EA)

675.50 REMOVING SIGNS
 AS SHOWN - 8

675.60 ERECTING SALVAGED SIGNS
 AS SHOWN - 1



621.20 STEEL BEAM GUARDRAIL, GALVANIZED
 WEST RUTLAND:
 STA 63+25.0 - STA 66+08.8 RT (283.8 LF)
 STA 63+25.0 - STA 64+41.0 LT (128.0 LF)
 STA 66+00.5 - STA 66+40.0 LT (39.5 LF)
 STA 66+65.0 - STA 66+79.5 LT (14.5 LF)
 STA 66+96.3 - STA 67+10.8 RT (14.5 LF)
 STA 67+09.0 - STA 67+50.5 LT (41.5 LF)

621.216 HD STEEL BEAM GUARDRAIL, GALVANIZED/NESTED
 WEST RUTLAND:
 STA 66+08.8 - STA 66+96.3 RT (87.5 LF)
 STA 66+40.0 - STA 66+65.0 LT (25.0 LF)

621.80 REMOVAL AND DISPOSAL OF GUARDRAIL
 WEST RUTLAND:
 STA 63+25.0 - STA 66+61.0 RT (336.0 LF)
 STA 63+25.0 - STA 61+41.0 LT (126.0 LF)
 STA 66+08.0 - STA 66+81.0 LT (73.0 LF)
 STA 67+09.0 - STA 67+48.0 LT (39.0 LF)

621.60 ANCHOR FOR STEEL BEAM RAIL
 WEST RUTLAND:
 STA 64+34.5 LT
 STA 66+07.0 LT
 STA 66+73.0 LT
 STA 67+04.3 RT
 STA 67+15.5 LT
 STA 67+44.0 LT

676.10 DELINEATOR WITH STEEL POST
 WEST RUTLAND:
 STA 64+41.0 LT
 STA 66+00.5 LT
 STA 66+79.5 LT
 STA 67+09.0 LT
 STA 67+10.8 RT
 STA 67+50.5 LT

NOTES:
 1. SEE SHEET 10 FOR STEEL BEAM GUARDRAIL AT SMALL CULVERT DETAIL.
 2. SEE SHEET 9 FOR DOUBLE-NESTED GUARDRAIL SYSTEM.

PROJECT LAYOUT SHEET #28	NOT TO SCALE	
	PROJECT NAME: CASTLETON - WEST RUTLAND	
	PROJECT NUMBER: STP 2705(1)	
	FILE NAME: p07cl68.dgn	PLOT DATE: 04-JUN-2013 09:14
PROJECT LEADER: D.E.G.	DRAWN BY: W.G.P.	
DESIGNED BY: M.J.M.	CHECKED BY: D.E.G.	
IPARM FILE: p07cl68128.i	SHEET 49 OF 152	

SIGN LEGEND
 R = REMOVE
 S = SALVAGE
 N = NEW
 RET = RETAIN
 B-B = BACK TO BACK
 EXISTING = - - - - -
 NEW = _____