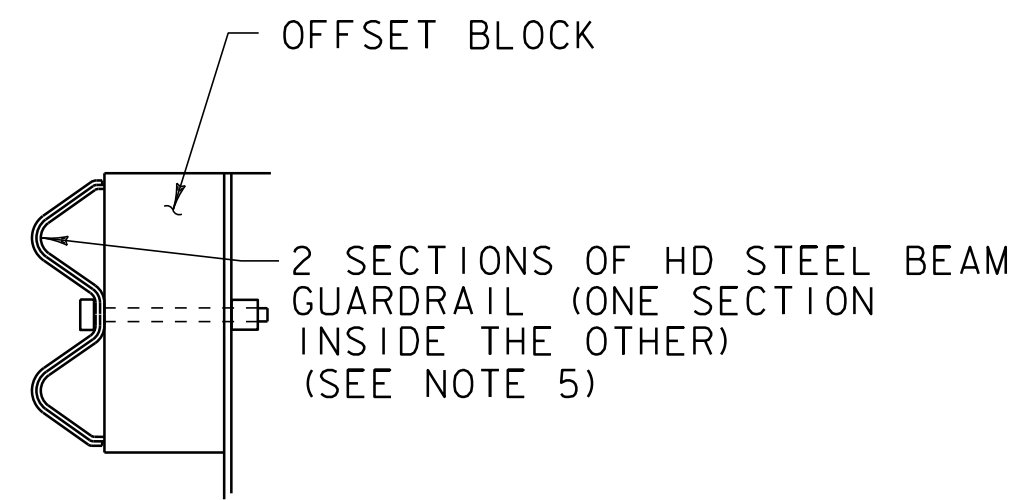
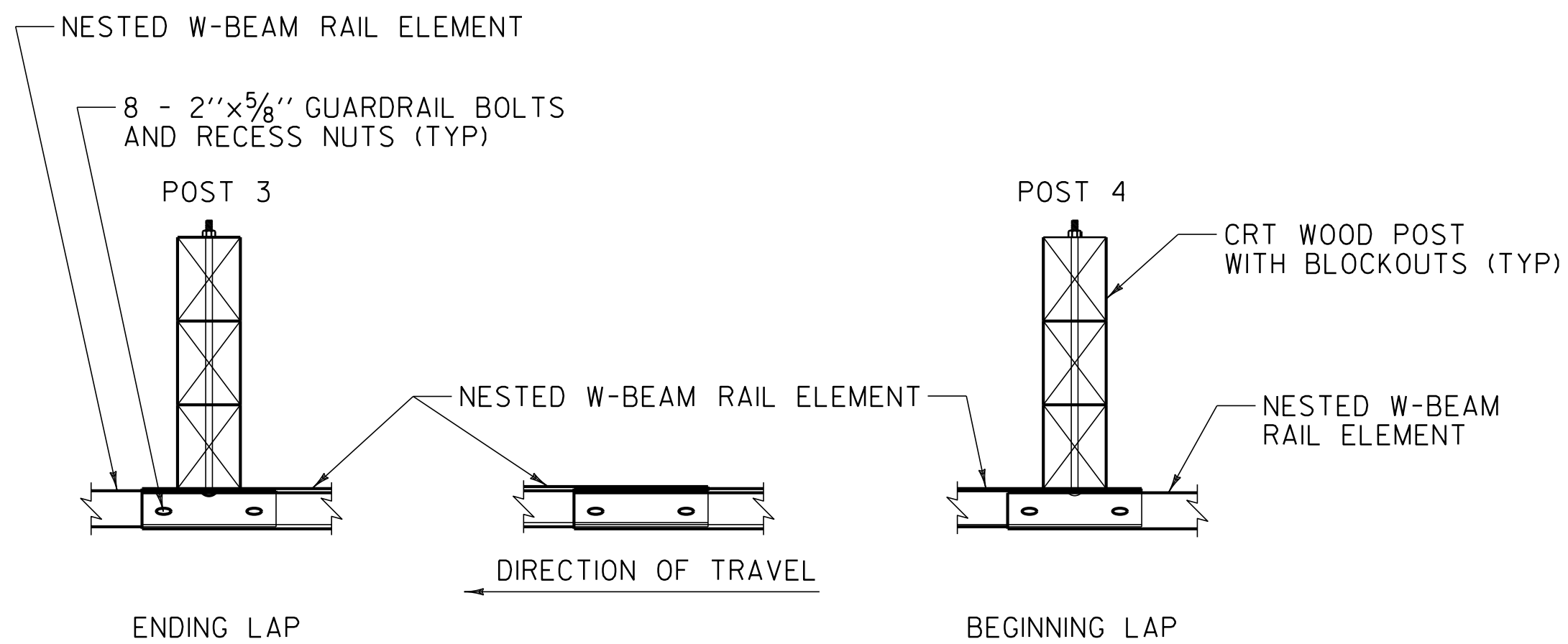


STEEL BEAM GUARDRAIL AT LARGE CULVERT DETAIL ELEVATION

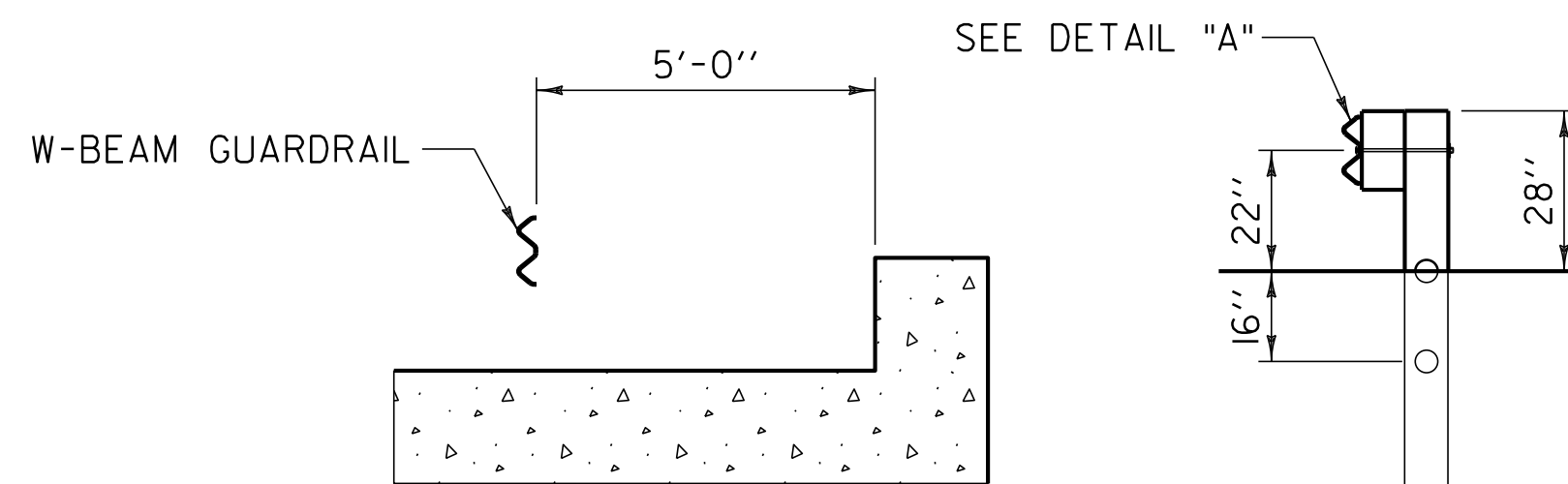
STP 2705(I):
 VT. ROUTE 4A CASTLETON STA 263+72.3 TO STA 264+59.8 RT (87.5 LF)
 VT. ROUTE 4A CASTLETON STA 263+72.3 TO STA 264+59.8 LT (87.5 LF)
 VT. ROUTE 4A IRA STA 50+20.3 TO STA 51+07.8 RT (87.5 LF)
 VT. ROUTE 4A IRA STA 50+20.3 TO STA 51+07.8 LT (87.5 LF)
 VT. ROUTE 4A WEST RUTLAND STA 66+08.8 TO STA 66+93.3 RT (84.5 LF)



DETAIL A



INTERMEDIATE LAP WITHOUT POST



SECTION A-A
(SEE NOTE 3)

SECTION B-B
(SEE NOTE 2)

DOUBLE-NESTED STEEL BEAM GUARDRAIL SYSTEM

NOTES:

- 25'-0" RAIL LENGTHS MAY BE USED TO ELIMINATE THE INTERMEDIATE LAP WITHOUT A POST. DO NOT PLACE A LAP WITHOUT A POST UNLESS NEEDED DUE TO LENGTH OF GAP.
- POSTS 1 THRU 6 ARE CRT POSTS WITH TWO BLOCKOUTS. SEE SECTION B-B FOR DETAILS.
- INSTALL THE BACK FACE OF THE NESTED GUARDRAIL A MINIMUM OF 5'-0" FROM THE FACE OF THE CURB-LIKE HEADWALL.
- SEE STANDARD G-IFOR STEEL BEAM GUARDRAIL DETAILS.
- THIS WORK SHALL BE PAID UNDER ITEM 621.216 HD STEEL BEAM GUARDRAIL, GALVANIZED/NESTED OR ITEM 621.217 HD STEEL BEAM GUARDRAIL, GALVANIZED/NESTED W/8 FEET POSTS AT A PAY FACTOR OF 1.0 AS DIRECTED BY THE RESIDENT ENGINEER.
- THIS DETAIL TO BE USED AS INDICATED ON THE ITEM DETAIL SUMMARY SHEET AT THE STATIONS INDICATED ABOVE OR AS DIRECTED BY THE RESIDENT ENGINEER.

NOT TO SCALE

COMPOSITE MISCELLANEOUS DETAILS SHEET #2	PROJECT NAME: CASTLETON - WEST RUTLAND & CASTLETON	PLOT DATE: 04-JUN-2013 09:14
	PROJECT NUMBER: STP 2705(I), STP 2908(I) & STP 2909(I)	DRAWN BY: W.G.P.
	FILE NAME: p07cl68.dgn	DESIGNED BY: M.J.M.
	IPARM FILE: p07cl68cmd2.i	CHECKED BY: D.E.G.
		SHEET 9 OF 152