

621.205 STEEL BEAM GUARDRAIL, GALVANIZED W/8 FEET POSTS
STA 32+00 TO 37+50 RT

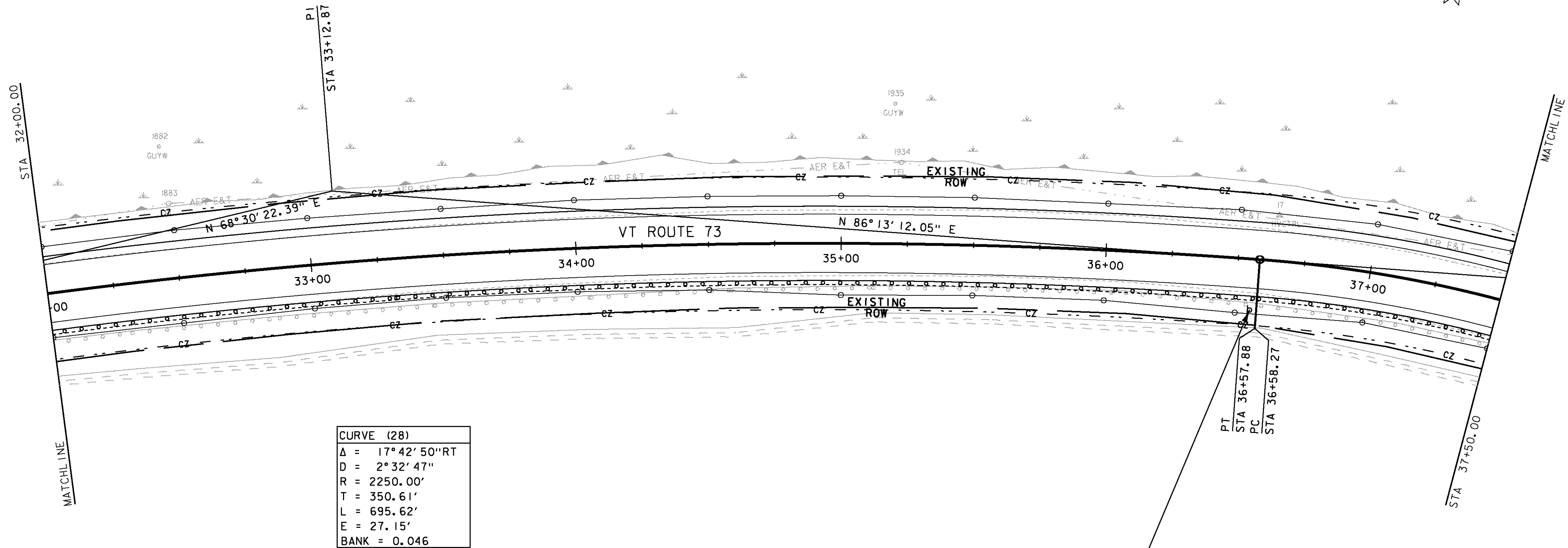
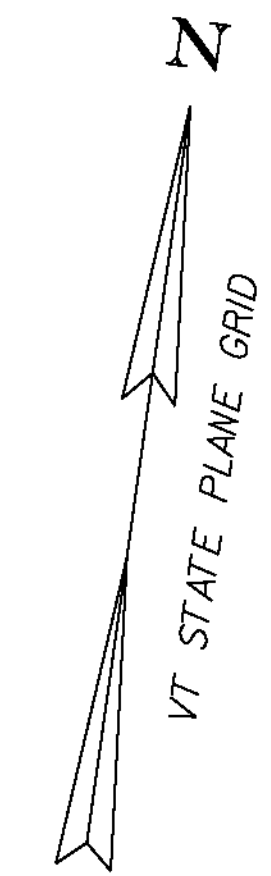
621.80 REMOVAL AND DISPOSAL OF GUARDRAIL
STA 32+00 TO 37+50 RT

DURABLE 4 INCH WHITE LINE (SEE OPTION AA)
DURABLE 4 INCH YELLOW LINE (SEE OPTION BB)
STA 32+00 TO 37+50 RT & LT

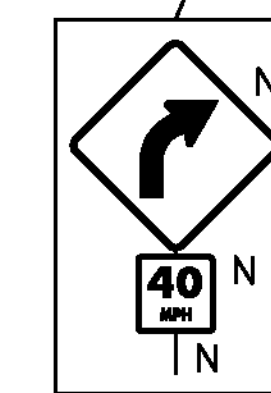
646.602 TEMPORARY 4 INCH WHITE LINE, PAINT
646.612 TEMPORARY 4 INCH YELLOW LINE, PAINT
STA 32+00 TO 37+50 RT & LT

675.20 TRAFFIC SIGN, TYPE A
STA 36+56 RT (2)

675.341 SQUARE TUBE SIGN POST AND ANCHOR
STA 36+56 RT

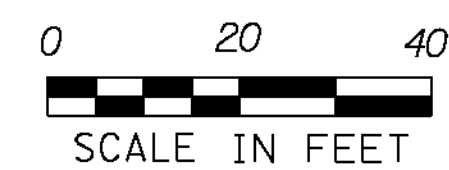


CURVE (28)	
Δ	= 17° 42' 50" RT
D	= 2° 32' 47"
R	= 2250.00'
T	= 350.61'
L	= 695.62'
E	= 27.15'
BANK	= 0.046



36+56 RT
W1-2R
W13-1P
SIGN LEGEND

R = REMOVE
S = SALVAGE
N = NEW
RET = RETAIN
T&T = THINNING & TRIMMING
B-B = BACK TO BACK
EXISTING = DASHED LINE
NEW = SOLID LINE



PROJECT NAME:	SUDBURY - BRANDON	PLOT DATE:	13-FEB-2013
PROJECT NUMBER:	STP 0158(3)	DRAWN BY:	B. MCADAMS
FILE NAME:	d10c204.bdr.dgn	CHECKED BY:	A. KEMPTON
PROJECT LEADER:	K. UPMAL	SHEET	61 OF 137
DESIGNED BY:	B. MCADAMS	LAYOUT	34