

621.205 STEEL BEAM GUARDRAIL, GALVANIZED W/8 FEET POSTS
STA 21+44 TO 26+50 RT

621.60 ANCHOR FOR STEEL BEAM RAIL
STA 21+50 RT

621.80 REMOVAL AND DISPOSAL OF GUARDRAIL
STA 21+44 TO 26+50 RT

676.10 DELINEATOR WITH STEEL POST
STA 21+44 RT

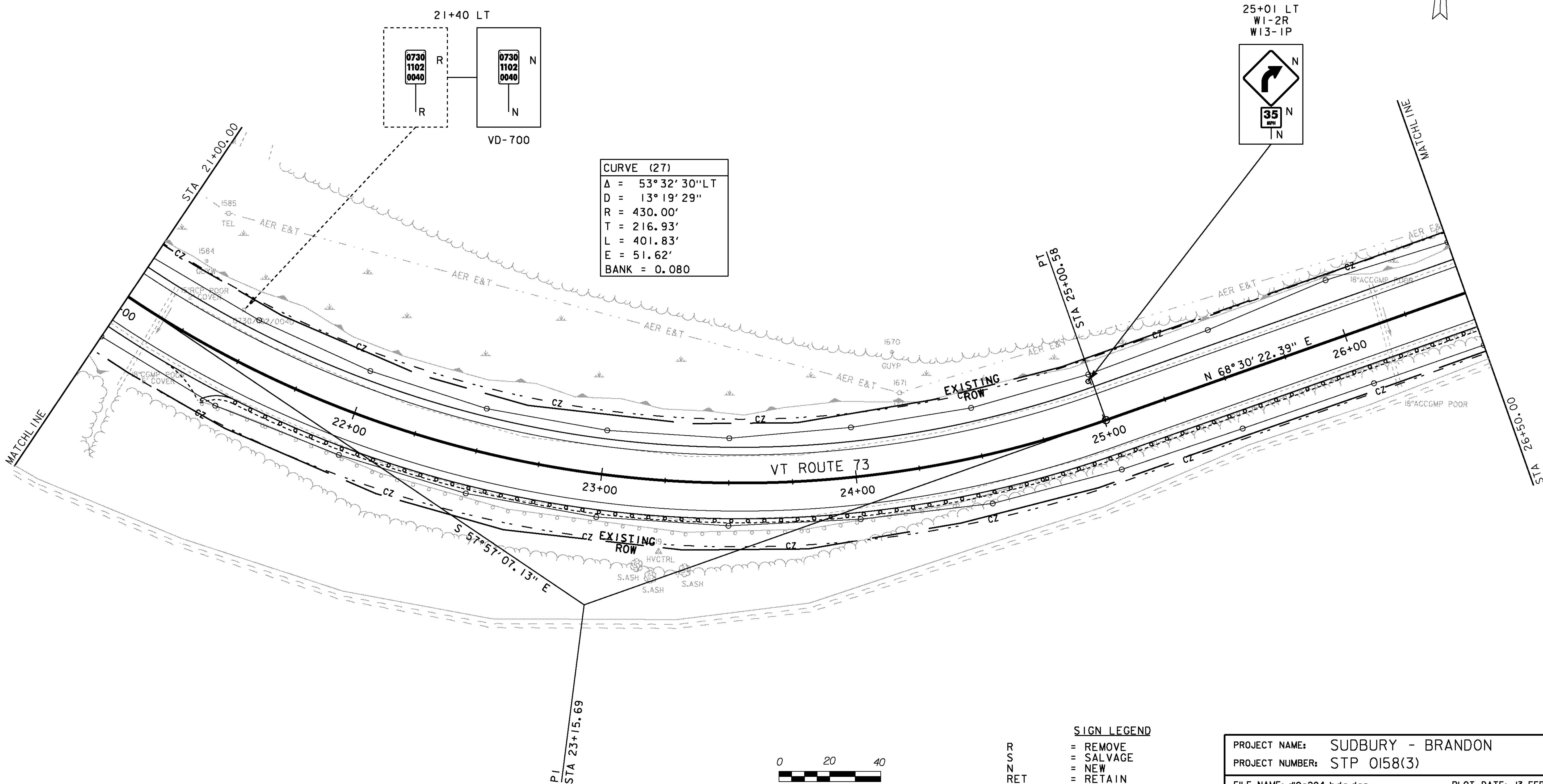
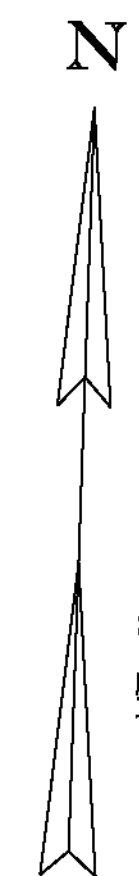
DURABLE 4 INCH WHITE LINE (SEE OPTION AA)
DURABLE 4 INCH YELLOW LINE (SEE OPTION BB)
STA 21+00 TO 26+50 RT & LT

646.602 TEMPORARY 4 INCH WHITE LINE, PAINT
646.612 TEMPORARY 4 INCH YELLOW LINE, PAINT
STA 21+00 TO 26+50 RT & LT

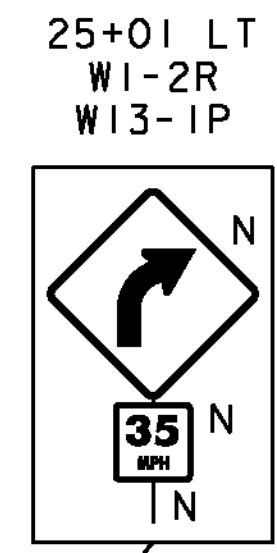
675.20 TRAFFIC SIGN, TYPE A
STA 21+40 LT
STA 25+01 LT (2)

675.341 SQUARE TUBE SIGN POST AND ANCHOR
STA 21+40 LT
STA 25+01 LT

675.50 REMOVING SIGNS
STA 21+40 LT



CURVE (27)	
Δ	= 53°32'30"LT
D	= 13°19'29"
R	= 430.00'
T	= 216.93'
L	= 401.83'
E	= 51.62'
BANK	= 0.080



SIGN LEGEND	
R	= REMOVE
S	= SALVAGE
N	= NEW
RET	= RETAIN
T&T	= THINNING & TRIMMING
B-B	= BACK TO BACK
EXISTING	-----
NEW	—————

PROJECT NAME:	SUDBURY - BRANDON	FILE NAME:	d:\0c204_bdr.dgn	PLOT DATE:	13-FEB-2013
PROJECT NUMBER:	STP 0158(3)	PROJECT LEADER:	K. UPMAL	DRAWN BY:	B. MCADAMS
		DESIGNED BY:	B. MCADAMS	CHECKED BY:	A. KEMPTON
		LAYOUT 32		SHEET	57 OF 137