

GPS CONTROL POINTS

**HVCTRL #1**

LAWES AZ MK  
 NORTH = 476693.637  
 EAST = 1482186.432  
 ELEV. = 421.574

DESCRIBED BY VERMONT GEODETIC SURVEY 1997 (CHR) GENERAL LOCATION, BRANDON, VT. TO REACH FROM THE INTERSECTION OF U.S.ROUTE 7 AND VT ROUTE 73 WEST AT THE NORTH END OF BRANDON VILLAGE GO NORTH ALONG U.S.ROUTE 7 FOR 0.5 MI (0.8 KM) TO THE INTERSECTION OF STEINBERG ROAD LEFT AND THE MARK ON THE LEFT IN THE NORTHWEST QUADRANT OF THE INTERSECTION. THE MARK IS SET FLUSH WITH GROUND SURFACE IN THE TOP OF A 0.3 M (1.0 FT) X 0.3 M (1.0 FT) ROCK OUTCROP. IT IS 11.8 M (38.7 FT) WEST-SOUTHWEST OF AND ABOUT 1.2 M (3.9 FT) LOWER THAN THE CENTERLINE OF U.S.ROUTE 7, 17.9 M (58.7 FT) NORTH OF THE CENTERLINE OF STEINBERG ROAD, 9.0 M (29.5 FT) EAST OF THE MOST EASTERLY OF THREE 1 CM SPRUCES, AND 9.3 M (30.5 FT) NORTHEAST OF POLE NO.16-1 AND A FIBERGLASS WITNESS POST.

**HVCTRL #2**

LAWES  
 NORTH = 474200.738  
 EAST = 1483769.716  
 ELEV. = 414.107

DESCRIBED BY VERMONT GEODETIC SURVEY 1997 (CHR) GENERAL LOCATION, BRANDON, VT. TO REACH FROM THE INTERSECTION OF U.S.ROUTE 7 AND VT ROUTE 73 WEST AT THE NORTH END OF BRANDON VILLAGE GO SOUTH ALONG U.S.ROUTE 7 FOR ABOUT 40 M (131.2 FT) TO THE INTERSECTION OF PEARL STREET RIGHT. TURN RIGHT AND GO SOUTHWEST ALONG PEARL STREET FOR ABOUT 70 M (229.7 FT) TO THE SITE OF THE MARK ON THE LEFT IN A GRASS STRIP BETWEEN PEARL STREET AND THE BRICK OTTER VALLEY GROCERY STORE. IT IS ABOUT OPPOSITE THE MOST SOUTHWESTERLY POINT OF A TRIANGULAR SHAPED TOWN PARK. THE MARK IS SET 3 CM BELOW GROUND SURFACE IN THE TOP OF A 30 CM DIAMETER CONCRETE MONUMENT POURED 1.3 M (4.3 FT) DEEP. IT IS 5.1 M (16.7 FT) SOUTHEAST OF AND ABOUT LEVEL WITH THE CENTERLINE OF PEARL STREET, 10.8 M (35.4 FT) NORTHWEST OF THE WEST CORNER OF THE BRICK OTTER VALLEY GROCERY STORE, 25.7 M (84.3 FT) SOUTHWEST OF THE NORTH CORNER OF THE STORE, 9.8 M (32.2 FT) WEST OF A 60 CM MAPLE, AND 16.0 M (52.5 FT) SOUTHWEST OF POLE NO.3/6 AND A FIBERGLASS WITNESS POST.

GPS CONTROL POINTS

**HVCTRL #22**

DR WHITE AZ MK  
 NORTH = 477175.876  
 EAST = 1470478.158  
 ELEV. = 350.131

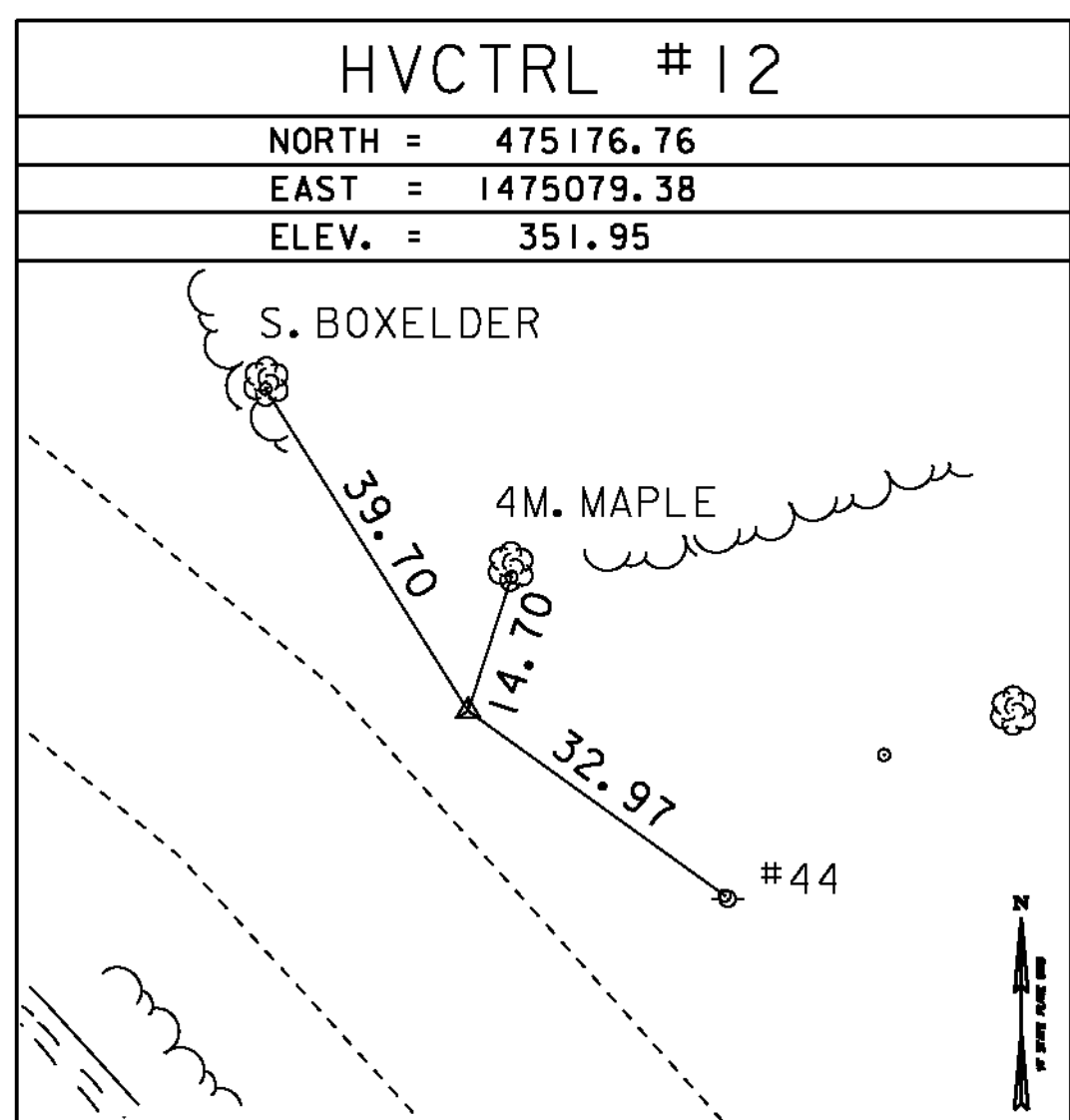
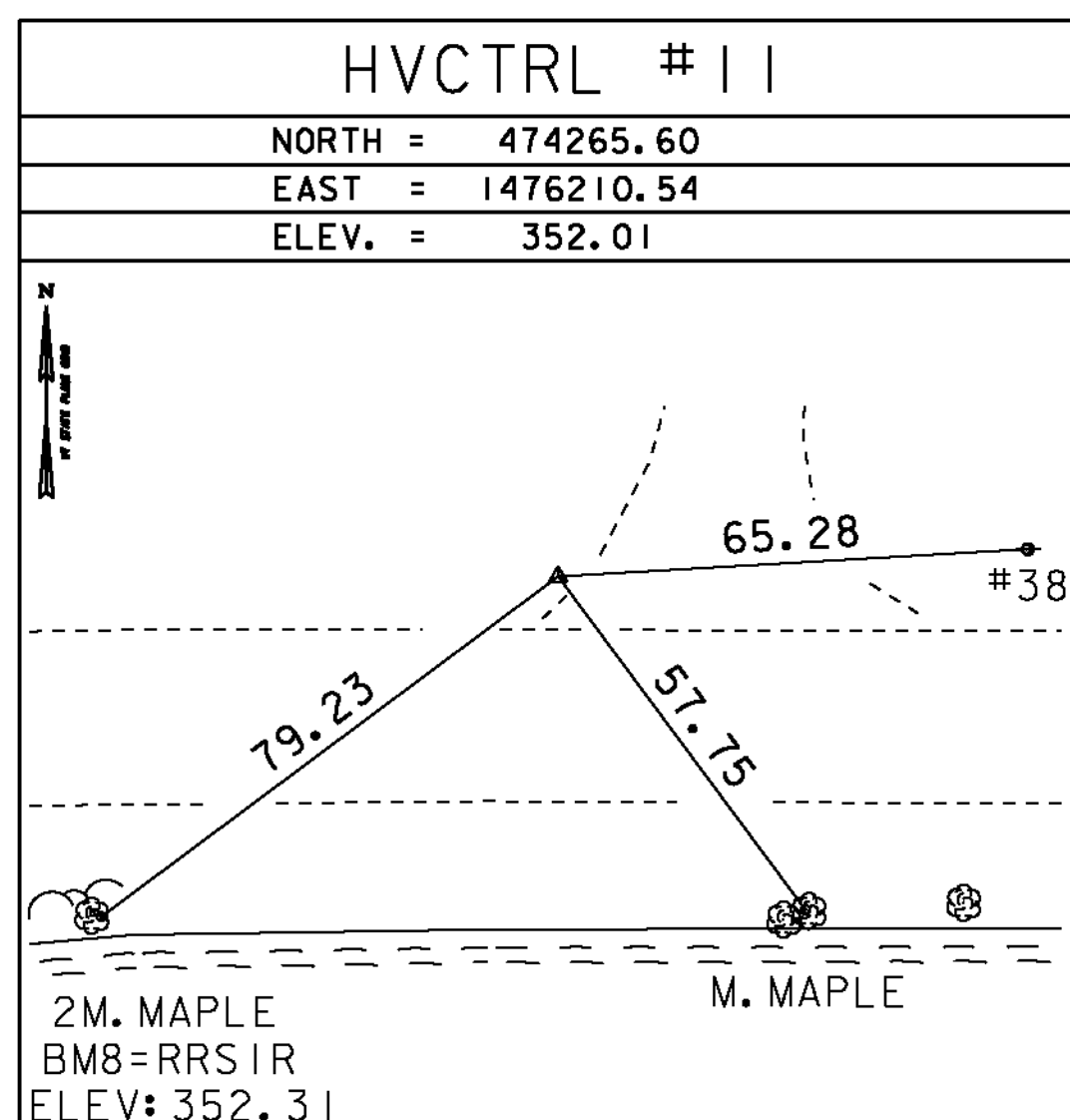
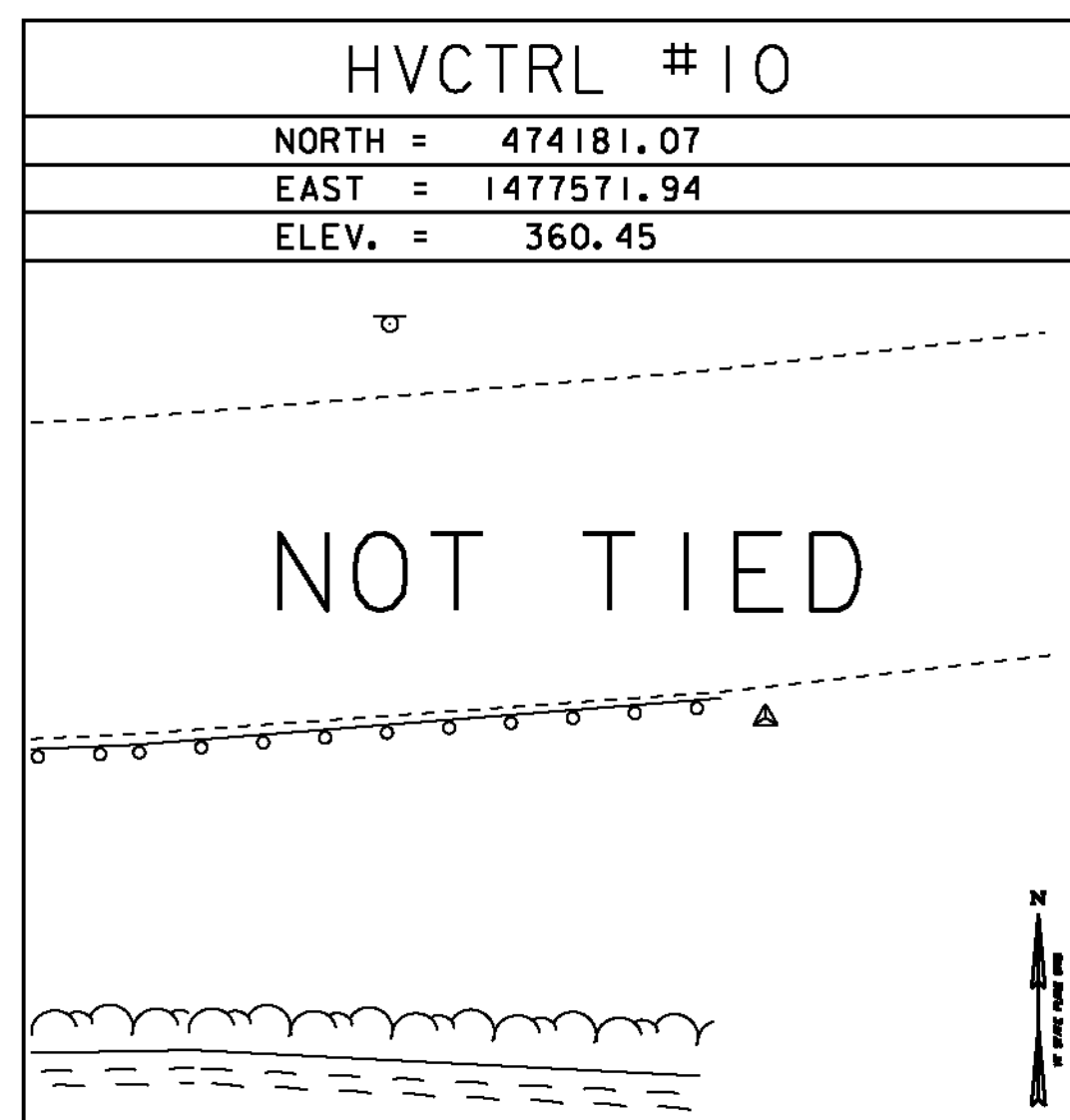
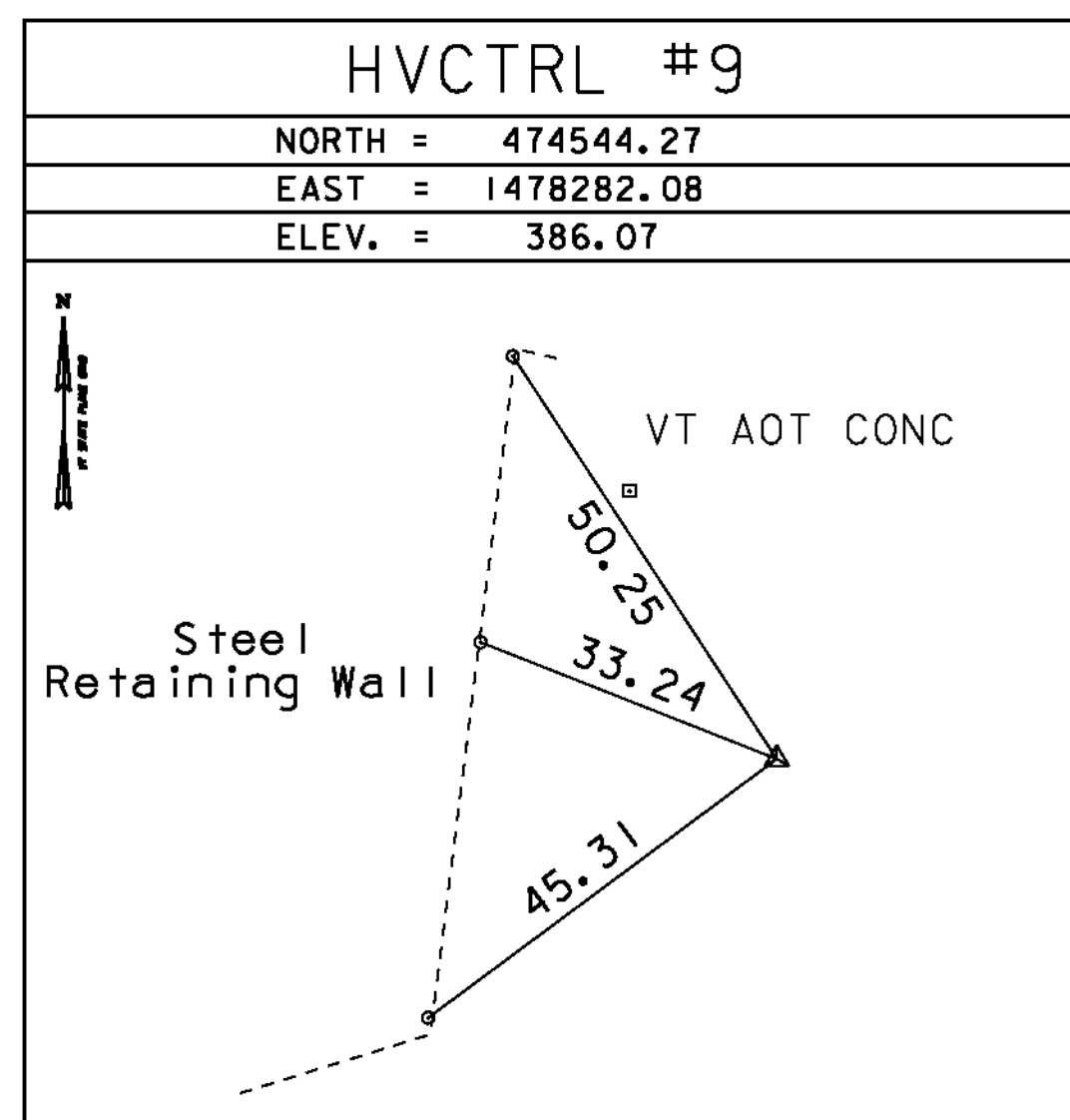
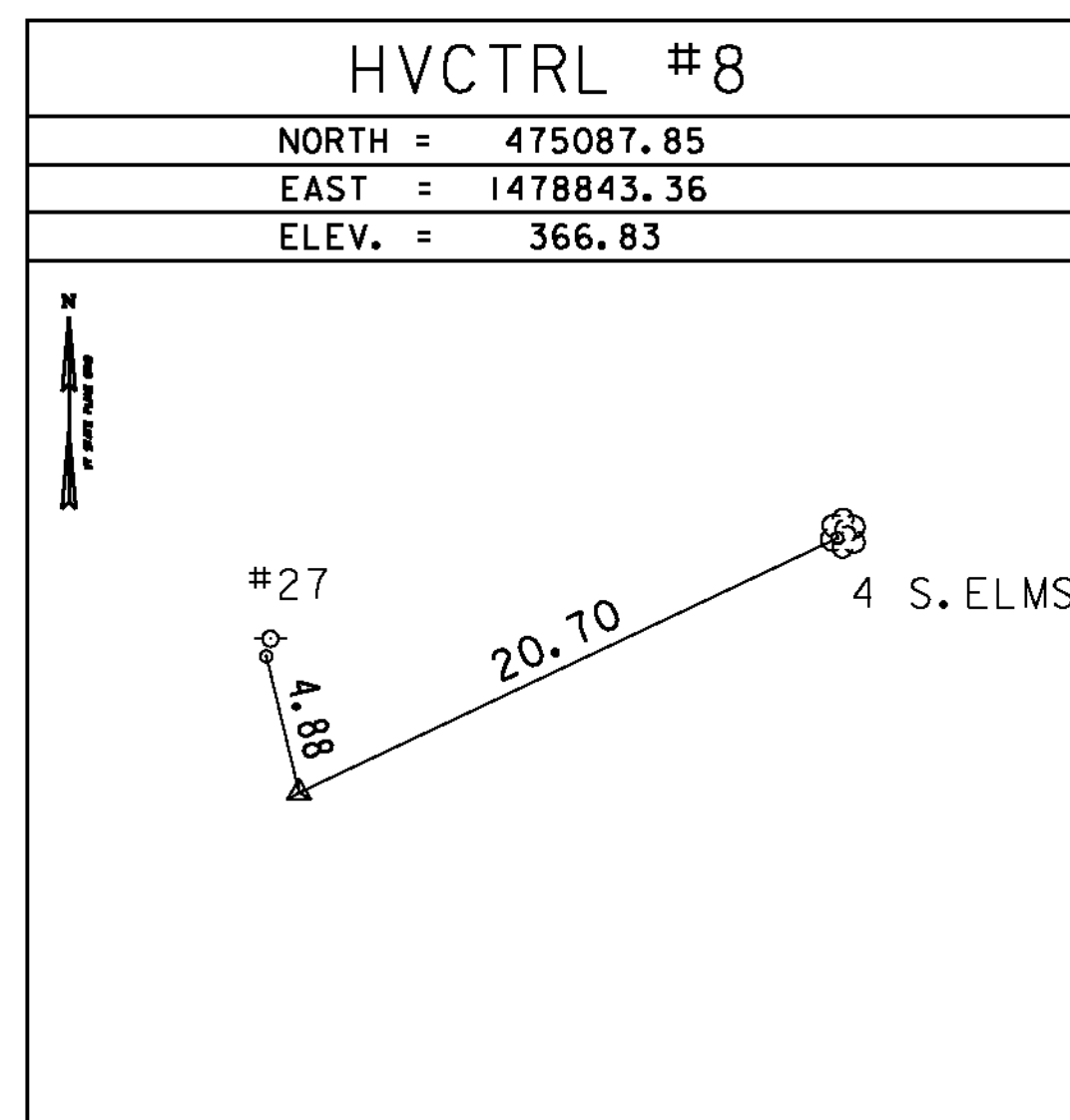
GENERAL LOCATION BRANDON,VT. TO REACH FROM THE INTERSECTION OF U.S.ROUTE 7 AND VT.ROUTE 73 WEST IN BRANDON GO WEST ALONG VT.ROUTE 73 FOR 2.9 MI (4.7 KM) TO THE SITE OF THE MARK ON THE RIGHT. IT IS 0.1 MI (0.2 KM) EAST ALONG VT.ROUTE 73 FROM ITS INTERSECTION WITH THE BRANDON/SUDBURY TOWNLINE. THE MARK IS SET FLUSH WITH THE GROUND SURFACE IN THE TOP A FENO STYLE MONUMENT DRIVEN 0.9 M (3.0 FT) INTO THE GROUND. IT IS 4.2 M (13.8 FT) NORTH OF AND ABOUT 0.2 M (0.7 FT) LOWER THAN THE NORTH EDGE OF PAVEMENT OF VT.ROUTE 73, 1.3 M (4.3 FT) NORTHWEST OF POLE NO.66, 4.9 M (16.1 FT) SOUTH OF A GUY ANCHOR, AND 0.2 M (0.7 FT) SOUTH OF A FIBERGLASS WITNESS POST.

**HVCTRL #25**

DR WHITE  
 NORTH = 480490.532  
 EAST = 1465652.882  
 ELEV. = 568.109

GENERAL LOCATION SUDBURY,VT. OWNERSHIP, DR.THOMAS WHITE, 4019 ABINGTON ROAD, CHARLOTTE, NC 28211. PHONE 704-384-1620 OR 704-364-2950. TO REACH FROM THE INTERSECTION OF VT.ROUTES 30 AND 73 EAST IN SUDBURY GO EAST ALONG VT.ROUTE 73 FOR 1.8 MI (2.9 KM) TO TOP OF THE HILL, A BARN ON THE RIGHT, A HOUSE ON THE LEFT AND THE SITE OF THE MARK ON THE LEFT IN A LAWN SOUTHEAST OF THE HOUSE. TO REACH FROM THE INTERSECTION OF U.S.ROUTE 7 AND VT.ROUTE 73 WEST IN BRANDON GO WEST ALONG VT.ROUTE 73 FOR 3.5 MI (5.6 KM) TO THE VT.ROUTE 73 BRIDGE OVER THE OTTER CREEK. CONTINUE STRAIGHT AHEAD AND GO WEST ALONG VT.ROUTE 73 FOR 0.6 MI (1.0 KM) TO THE TOP OF THE HILL AND THE SITE OF THE MARK ON THE RIGHT. THE MARK IS SET IN A 0.3 M (1.0 FT) X 0.7 M (2.3 FT) ROCK OUTCROP WHICH IS FLUSH WITH THE GROUND SURFACE. IT IS 19.4 M (63.6 FT) NORTHEAST OF AND ABOUT 0.5 M (1.6 FT) HIGHER THAN THE NORTHEAST EDGE OF PAVEMENT OF VT.ROUTE 73, 20.6 M (67.6 FT) EAST OF THE SOUTH PORCH CORNER, 14.9 M (48.9 FT) SOUTHEAST OF THE EAST PORCH CORNER, AND 33.5 M (109.9 FT) NORTH NORTHEAST OF POLE NO.24.

TRAVERSE TIES



\* Main Traverse Completed 4/19/99 by L.Orvis P.C. & R.Bullock

DATUM	
VERTICAL	NAVD 88
HORIZONTAL	NAD 83 (96)
ADJUSTMENT	Compass

PROJECT NAME:	SUDBURY - BRANDON
PROJECT NUMBER:	STP 0158(3)
FILE NAME:	d10c204_+1.dgn
PROJECT LEADER:	K. UPMAL
DESIGNED BY:	B. MCADAMS
TIE SHEET 1	
PLOT DATE:	13-FEB-2013
DRAWN BY:	R. BULLOCK
CHECKED BY:	B. MCADAMS
SHEET 13	OF 137