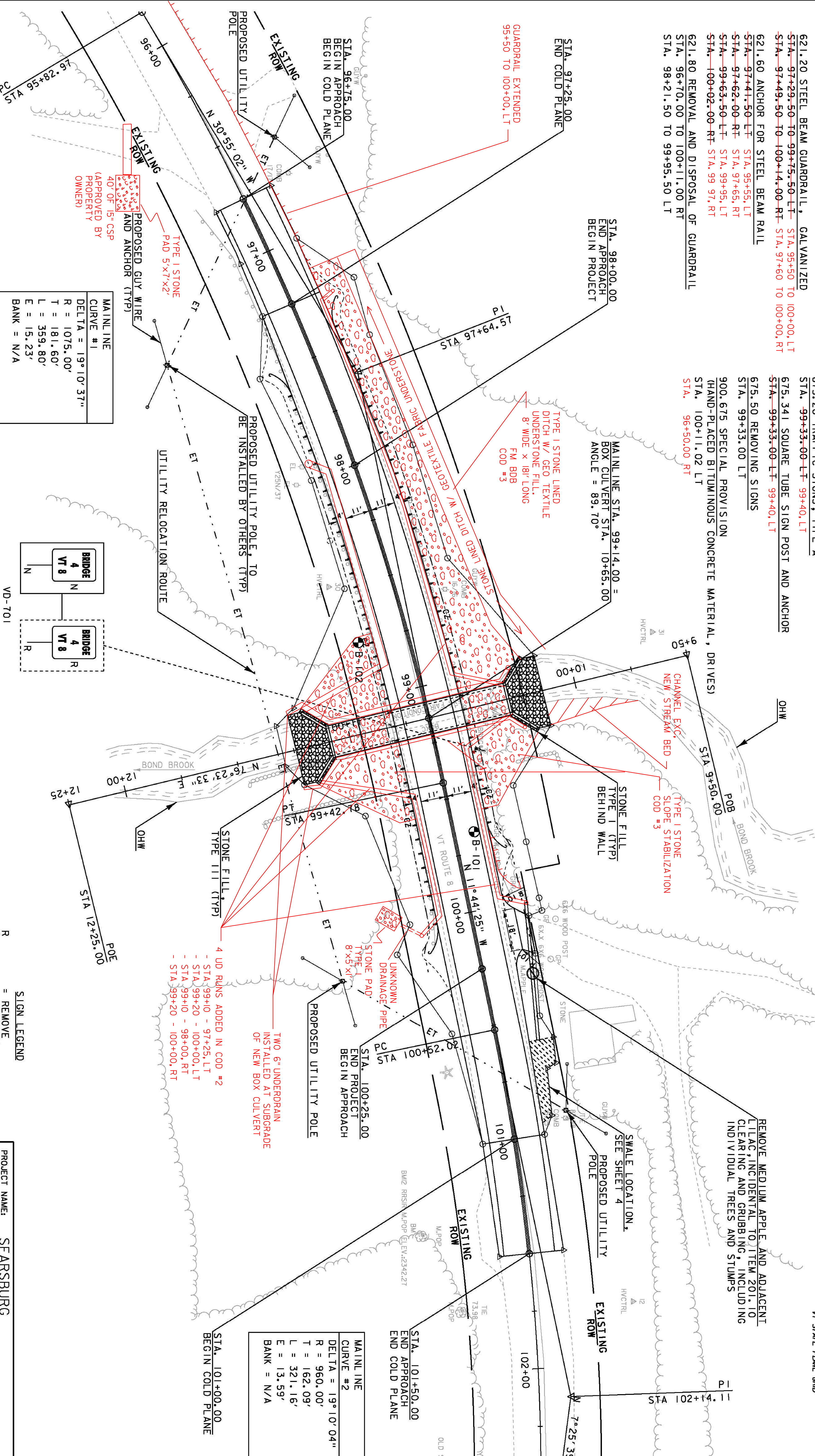


210.10 COLD PLANING, BITUMINOUS PAVEMENT
~~STA. 96+75.00 TO 97+25.00~~ STA. 94+50 TO 95+25
~~STA. 101+00.00 TO 101+50.00~~ STA. 101+00 TO 101+75
 540.10 PRECAST CONCRETE STRUCTURE (BOX CULVERT)
 BOX CULVERT STA. 10+29.52 TO 11+08.94 C/L
 621.20 STEEL BEAM GUARDRAIL, GALVANIZED
~~STA. 97+29.50 TO 99+75.50~~ LT STA. 95+50 TO 100+00, LT
~~STA. 97+49.50 TO 100+14.00~~ RT STA. 97+60 TO 100+00, RT
 621.60 ANCHOR FOR STEEL BEAM RAIL
~~STA. 97+41.50~~ LT STA. 95+55, LT
~~STA. 97+62.00~~ RT STA. 97+65, RT
~~STA. 99+63.50~~ LT STA. 99+95, LT
~~STA. 100+02.00~~ RT STA. 99.97, RT
 621.80 REMOVAL AND DISPOSAL OF GUARDRAIL
 STA. 96+70.00 TO 100+11.00 RT
 STA. 98+21.50 TO 99+95.50 LT

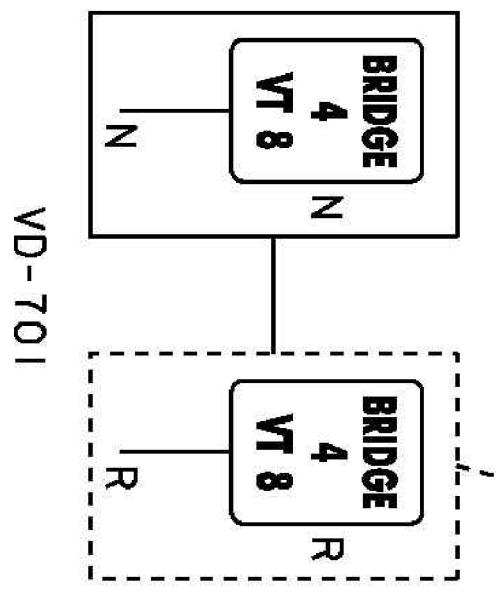
646.402 DURABLE 4" WHITE LINE, THERMOPLASTIC
~~STA. 96+75.00 TO 101+50.00~~ LT & RT STA. 94+50 TO 102+00, LT & RT
 646.412 DURABLE 4" YELLOW LINE (DOUBLE), THERMOPLASTIC
~~STA. 96+75.00 TO 101+50.00~~ STA. 93+50 TO 102+25
 675.20 TRAFFIC SIGNS, TYPE A
 STA. 99+33.00 LT 99+40, LT
 675.341 SQUARE TUBE SIGN POST AND ANCHOR
~~STA. 99+33.00~~ LT 99+40, LT
 675.50 REMOVING SIGNS
 STA. 99+33.00 LT
 900.675 SPECIAL PROVISION
 (HAND-PLACED BITUMINOUS CONCRETE MATERIAL, DRIVES)
 STA. 100+11.02 LT
 STA. 96+50.00 RT

OPTION AA PIPE 15" X 60"
 601.001 CSP 0.079 (2 3/4 X 1/2)
 601.0810 RCP CLASS III
 STA. 100+01.00 TO 100+60.00 LT
 STA. 96+25 TO 96+50, RT

REMOVE MEDIUM APPLE AND ADJACENT
 LILAC, INCIDENTAL TO ITEM 201.10
 CLEARING AND GRUBBING, INCLUDING
 INDIVIDUAL TREES AND STUMPS



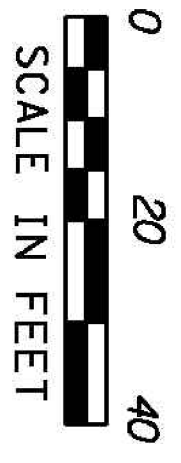
| MAINLINE CURVE #1 |
|---------------------|
| DELTA = 19° 10' 37" |
| R = 1075.00' |
| T = 181.60' |
| L = 359.80' |
| E = 15.23' |
| BANK = N/A |



SIGN LEGEND
 = REMOVE
 = SALVAGE
 = NEW
 = RETAIN
 = THINNING & TRIMMING
 = BACK TO BACK
 --- EXISTING
 --- NEW

| MAINLINE CURVE #2 |
|---------------------|
| DELTA = 19° 10' 04" |
| R = 960.00' |
| T = 162.09' |
| L = 321.16' |
| E = 13.59' |
| BANK = N/A |

DATUM
 VERTICAL NAVD88
 HORIZONTAL NAD83 (2007)



PROJECT NAME: SEARSBURG
 PROJECT NUMBER: STP SCRP7 101/100
 FILE NAME: d10g98_bdr.dgn
 PROJECT LEADER: K. UPMAL
 DESIGNED BY: B. MCADAMS
 LAYOUT SHEET
 PLOT DATE: 27-FEB-2013
 DRAWN BY: B. MCADAMS
 CHECKED BY: A. KEMPTON
 SHEET 10 OF 35