

GPS CONTROL POINTS

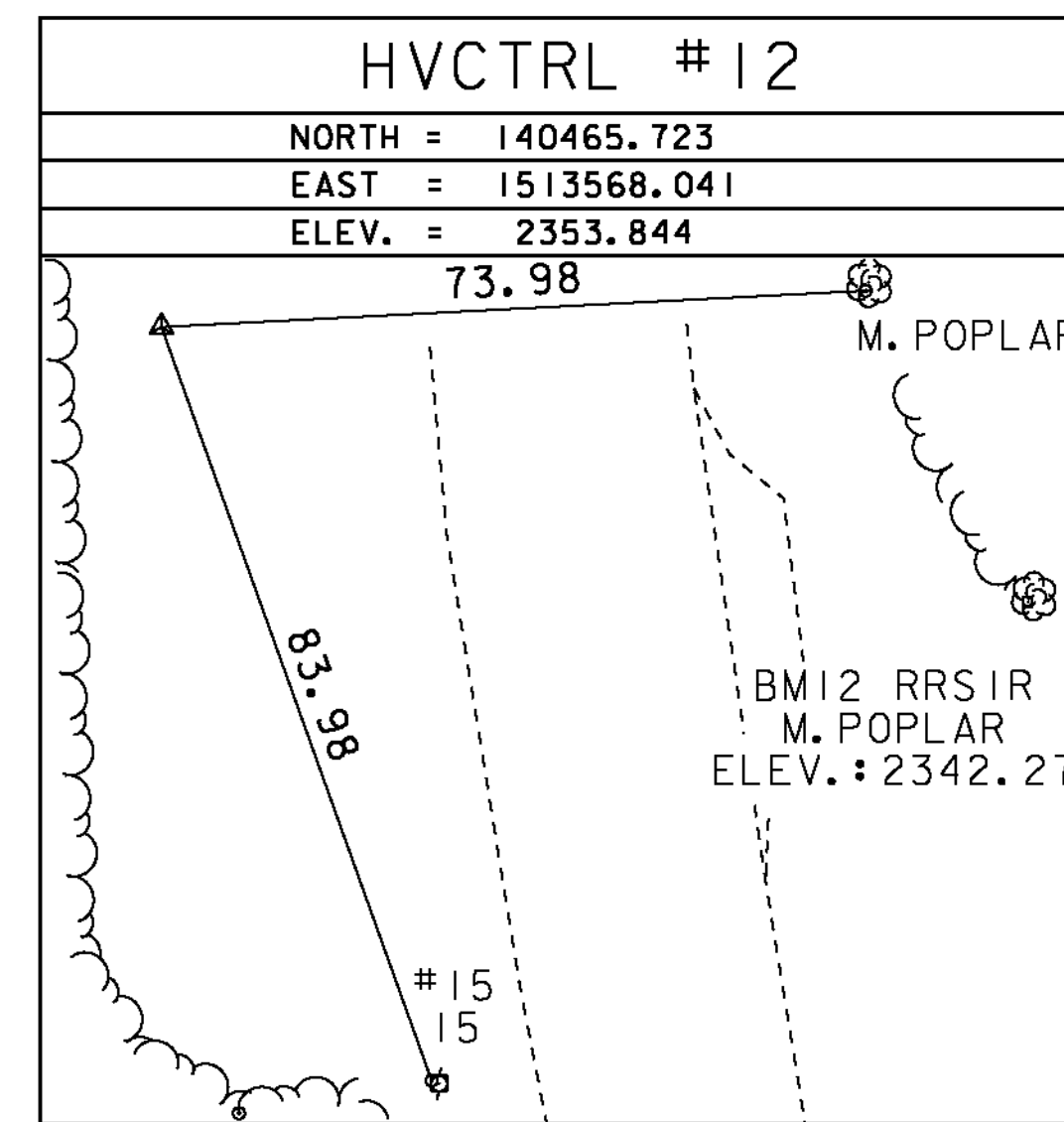
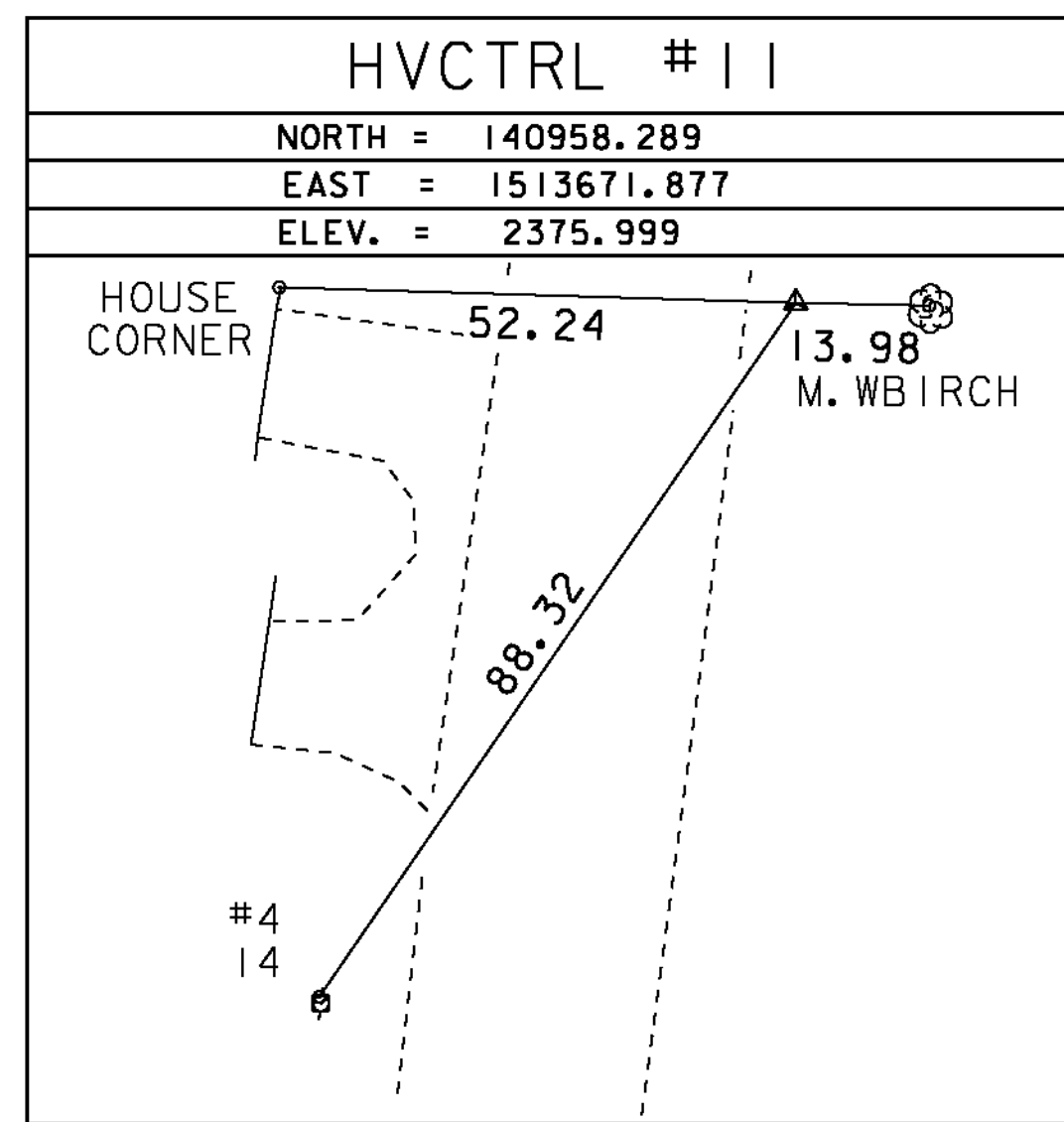
HVCTRL #1  
 B95038  
 NORTH = 144719.608  
 EAST = 1515736.325  
 ELEV. = 2126.030

DESCRIBED BY VERMONT AGENCY OF TRANSPORTATION 1995 (CHR)  
 GENERAL LOCATION, SEARSBURG, VT., ABOUT 5 MI (8.0 KM) WEST OF WILMINGTON, VT., ABOUT 12 MI (19.3 KM) EAST OF BENNINGTON, AND ABOUT 11 MI (17.7 KM) NORTH OF THE MASSACHUSETTS/VERMONT STATE LINE. TO REACH FROM THE INTERSECTION OF VT ROUTES 9 AND 8 IN SEARSBURG GO EAST ALONG VT ROUTE 9 FOR 0.6 MI (1.0 KM) TO A TRUCK ESCAPE RAMP AND THE MARK ON THE RIGHT. THE MARK IS SET 3 CM BELOW GROUND SURFACE IN THE TOP OF A 30 CM DIAMETER CONCRETE MONUMENT POURED 1.6 M (5.2 FT) DEEP. IT IS 17.9 M (58.7 FT) SOUTH OF AND ABOUT 2 M (6.6 FT) HIGHER THAN THE CENTERLINE OF VT ROUTE 9, 1.0 M (3.3 FT) NORTH OF THE NORTH EDGE OF THE CRUSHED STONE TRUCK ESCAPE RAMP, 10.3 M (33.8 FT) SOUTHWEST OF POLE NO. 354/607/13 1/2, 18.8 M (61.7 FT) EAST OF A RUNAWAY TRUCK SIGN WITH FLASHING LIGHTS, AND 0.5 M (1.6 FT) NORTH OF A FIBERGLASS WITNESS POST. NOTE, THIS MARK IS INTERVISIBLE WITH MARK B95037.

HVCTRL #2  
 B95037  
 NORTH = 144132.556  
 EAST = 1513922.465  
 ELEV. = 2220.920

DESCRIBED BY VERMONT AGENCY OF TRANSPORTATION 1995 (CHR)  
 GENERAL LOCATION, SEARSBURG, VT., ABOUT 5.5 MI (8.9 KM) WEST OF WILMINGTON, VT., ABOUT 11.5 MI (18.5 KM) EAST OF BENNINGTON, AND ABOUT 11 MI (17.7 KM) NORTH OF THE MASSACHUSETTS/VERMONT STATE LINE. TO REACH FROM THE INTERSECTION OF VT ROUTES 9 AND 8 IN SEARSBURG GO EAST ALONG VT ROUTE 9 FOR 0.25 MI (0.40 KM) TO A PULLOUT (OLD ROAD GRADE) ON THE RIGHT AND THE MARK ON THE RIGHT IN A GRASS ISLAND BETWEEN THE OLD ROAD GRADE AND VT ROUTE 9. THE MARK IS SET FLUSH WITH THE GROUND SURFACE IN THE TOP OF A 30 CM DIAMETER CONCRETE MONUMENT POURED 1.5 M (4.9 FT) DEEP. IT IS 13.5 M (44.3 FT) SOUTH OF AND ABOUT 0.5 M (1.6 FT) LOWER THAN THE CENTERLINE OF VT ROUTE 9, 1.5 M (4.9 FT) NORTH OF THE NORTH EDGE OF PAVEMENT OF THE OLD ROAD GRADE, 11.2 M (36.7 FT) NORTH OF POLE NO. 616/20, 37.8 M (124.0 FT) WEST OF THE WEST END OF A CONCRETE DROP INLET AT THE EAST END OF THE PULLOUT, AND 0.4 M (1.3 FT) SOUTH OF A FIBERGLASS WITNESS POST. NOTE, THIS MARK IS INTERVISIBLE WITH MARK B95038.  
 THE MARK IS SET 5 CM (2 INCHES) BELOW GROUND SURFACE IN THE TOP OF A 30 CM (12 INCHES) DIAMETER CONCRETE MONUMENT. IT IS 7.4 M (24.3 FT) NORTHWEST OF AND ABOUT 0.6 M (2.0 FT) LOWER THAN THE VT ROUTE 9 NORTHWEST EDGE OF PAVEMENT, 11.0 M (36.1 FT) SOUTHEAST OF POLE NO 616/20, 27.3 SOUTH-SOUTHWEST OF THE MOST SOUTHWESTERLY OF TWO VERTICALLY INSTALLED STEEL I-BEAMS MARKING THE SOUTHEAST END OF A WOODEN BRIDGE SPANNING A SMALL BROOK, AND 9.5 M (31.2 FT) NORTH-NORTHEAST OF A MOOSE CROSSING SIGN.

TRAVERSE TIES



NORTH =

EAST =

ELEV. =

NORTH =

EAST =

ELEV. =

NORTH =

EAST =

ELEV. =

\* MAIN TRAVERSE COMPLETED 4/12/11 BY L. ORVIS P.C. & G. HITCHCOCK

ALIGNMENT TIES

NORTH =

EAST =

ELEV. =

NORTH =

EAST =

ELEV. =

NORTH =

EAST =

ELEV. =

NORTH =

EAST =

ELEV. =

NORTH =

EAST =

ELEV. =

|            |             |
|------------|-------------|
| DATUM      |             |
| VERTICAL   | NAVD 88     |
| HORIZONTAL | NAD 83 (07) |
| ADJUSTMENT | COMPASS     |

|                 |                    |
|-----------------|--------------------|
| PROJECT NAME:   | SEARSBURG          |
| PROJECT NUMBER: | STP SCR P (7)      |
| FILE NAME:      | d:\0ci98_forms.dgn |
| PROJECT LEADER: | K. UPMALL          |
| DESIGNED BY:    | B. MCADAMS         |
| TIE SHEET 1     |                    |
| PLOT DATE:      | 27-FEB-2013        |
| DRAWN BY:       | R. BULLOCK         |
| CHECKED BY:     | B. MCADAMS         |
| SHEET 8         | OF 35              |