

DURABLE 4 INCH WHITE LINE (SEE OPTION ITEMS)
 STA. 27+50 - STA. 33+25 (SOLID LT & RT)
 (WITH EDGELINE BREAKS AT TH #5)

DURABLE 4 INCH YELLOW LINE (SEE OPTION ITEMS)
 STA. 27+50 - STA. 33+25 (SOLID LT & RT)
 (WITH CENTERLINE BREAKS AT TH #5)

STONE FILL, TYPE I
 STA. 28+02 - STA. 28+23 RT

GRUBBING MATERIAL
 STA. 28+02 - STA. 28+23 RT

GEOTEXTILE UNDER STONE FILL
 STA. 28+02 - STA. 28+23 RT

GEOTEXTILE FOR SILT FENCE
 STA. 28+02 - STA. 28+23 RT

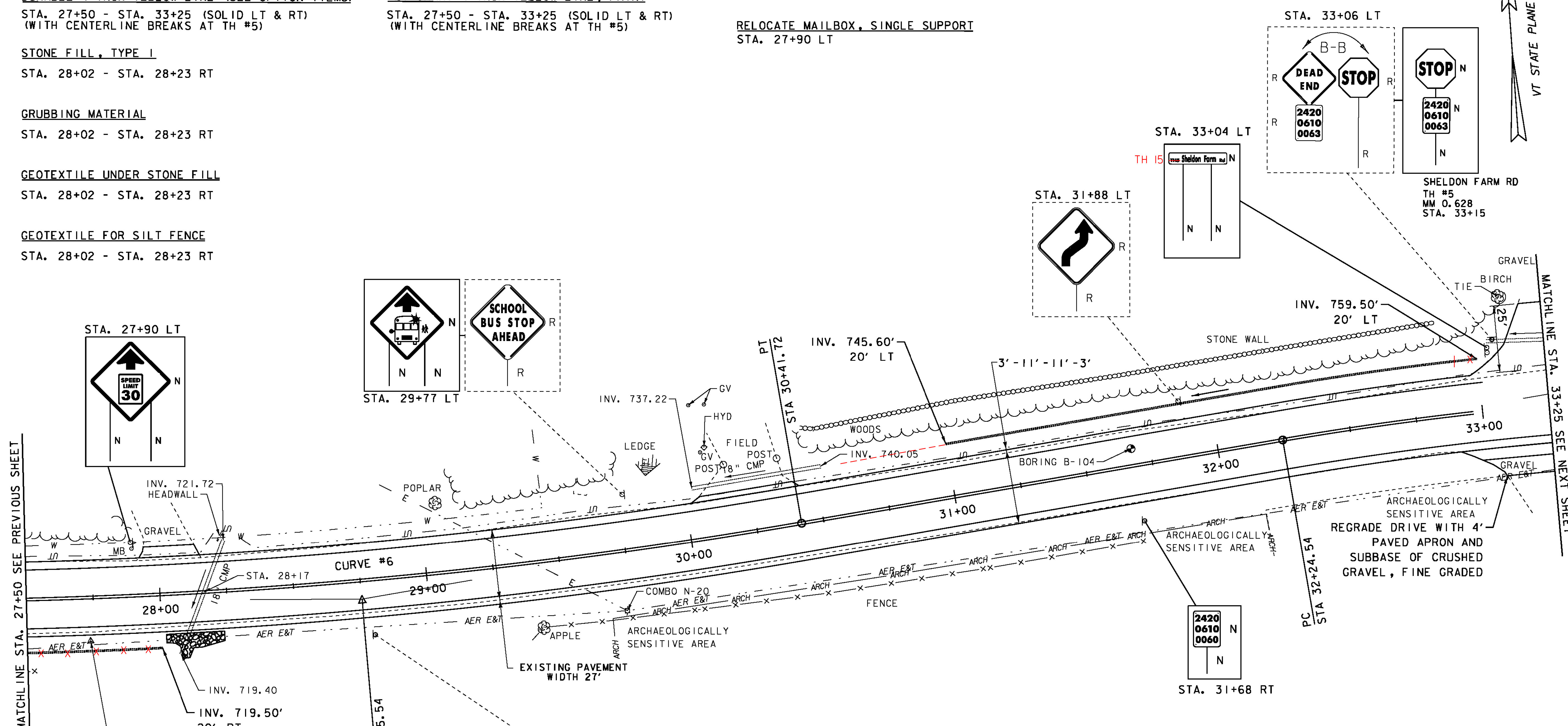
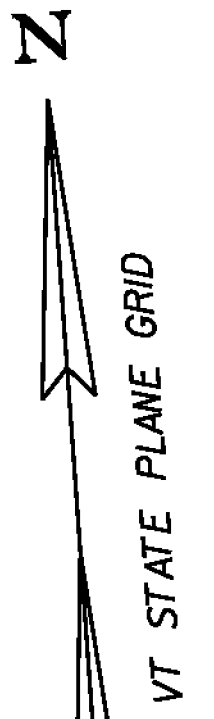
TEMPORARY 4 INCH WHITE LINE, PAINT
 STA. 27+50 - STA. 33+25 (SOLID LT & RT)
 (WITH EDGELINE BREAKS AT TH #5)

TEMPORARY 4 INCH YELLOW LINE, PAINT
 STA. 27+50 - STA. 33+25 (SOLID LT & RT)
 (WITH CENTERLINE BREAKS AT TH #5)

6 INCH UNDERDRAIN PIPE
~~STA. 27+50 - STA. 28+00 RT~~
~~STA. 31+00 - STA. 33+00 LT~~
 30+62 32+82

REMOVING SIGNS
 AS SHOWN - 6

RELOCATE MAILBOX, SINGLE SUPPORT
 STA. 27+90 LT



LEGEND

○	MAILBOX
○	BORING
○	SIGN
○	HYDRANT
○	MANHOLE
○	WATER SHUT OFF (WSO)
○	GAS PIPELINE MARKER
○	CATCH BASIN / DROP INLET
○	CURB INLET
⊗	TRAFFIC CONTROL BOX
⊕	PARKING METER
⊖	UTILITY POLE

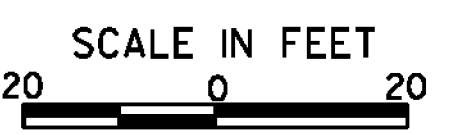
SIGN LEGEND

R	= REMOVE
R&S	= REMOVE AND SALVAGE
RET	= RETAIN
S	= SALVAGED
N	= NEW
B-B	= BACK TO BACK
- - -	= EXISTING
—	= NEW

CURVE #6
 DELTA = 9°32'38"
 D = 2°51'53"
 R = 2000.00'
 T = 166.96'
 L = 333.14'
 E = 6.96'
 BANKING 0.036 FT/FT
 DESIGN SPEED 40 MPH
 SEE SUPERELEVATION DIAGRAMS
 FOR BANKING INFORMATION

DATUM

NAVD 88
NAD 83



PROJECT LAYOUT SHEET 6	PROJECT NAME: MONTGOMERY-WESTFIELD
	PROJECT NUMBER: STP 2906(1)
	FILE NAME: p10C190.dgn
	DESIGNED BY: SJL
	PLOT FILE: p10C190_27.1
	PLOT DATE: 9/5/12
	DRAWN BY: SJL
	CHECKED BY: EPD
	SHEET 27 OF 178

SEH
2-25-14