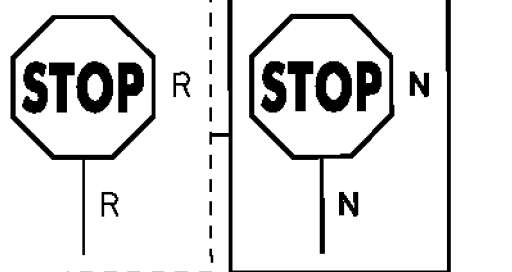


STA. 0+53 LT



STA. 0+59 LT

DURABLE 4 INCH WHITE LINE (SEE OPTION ITEMS)
 STA. 0+20 - STA. 5+25 (SOLID LT & RT)

DURABLE 4 INCH YELLOW LINE (SEE OPTION ITEMS)
 STA. 0+33 - STA. 5+25 (SOLID LT & RT)

DURABLE 24 INCH STOP BAR (SEE OPTION ITEMS)
 STA. 0+33 LT

DURABLE LETTER OF SYMBOL (SEE OPTION ITEMS)
 STA. 0+42 LT "STOP"

TEMPORARY 4 INCH WHITE LINE, PAINT
 STA. 0+20 - STA. 5+25 (SOLID LT & RT)

TEMPORARY 4 INCH YELLOW LINE, PAINT
 STA. 0+33 - STA. 5+25 (SOLID LT & RT)

TEMPORARY 24 INCH STOP BAR, PAINT
 STA. 0+33 LT

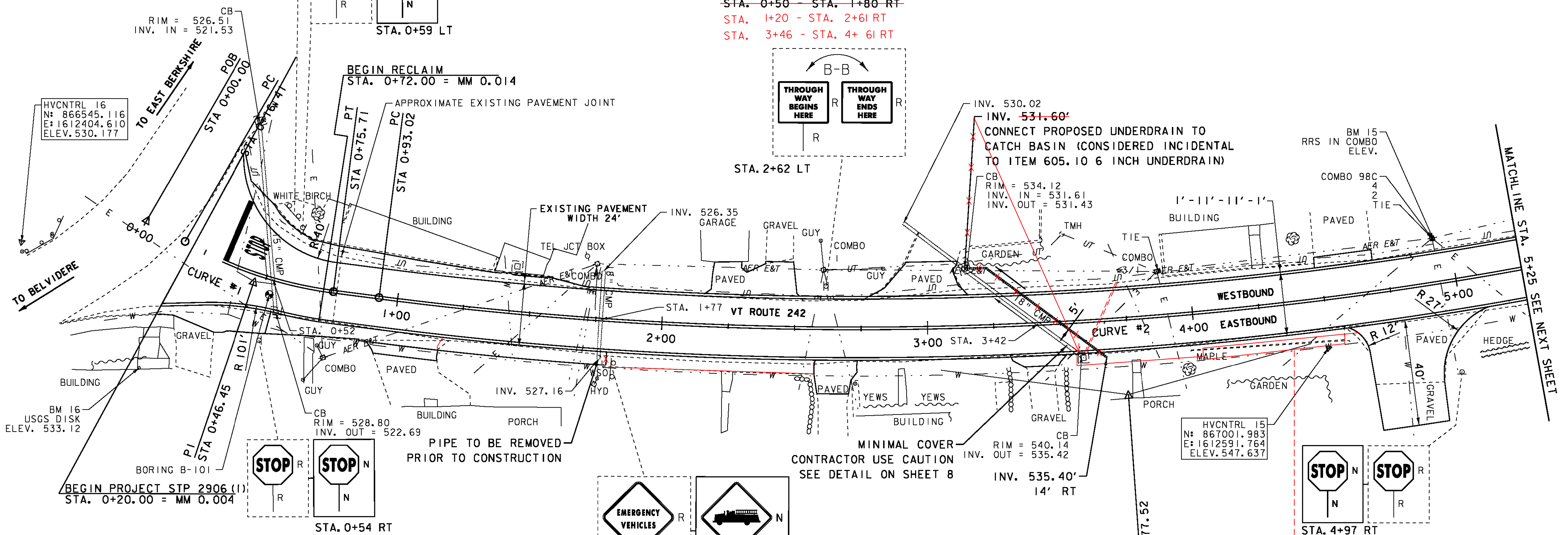
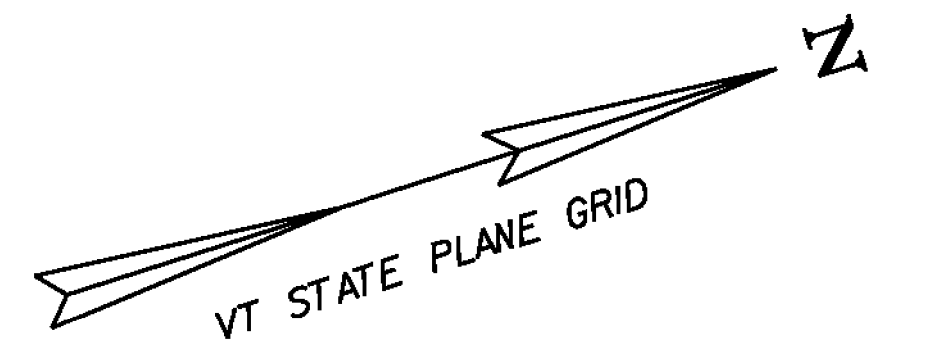
TEMPORARY LETTER OF SYMBOL, PAINT
 STA. 0+42 LT "STOP"

REHAB. DROP INLET, CATCH BASINS,
 OR MANHOLES, CLASS I
 STA. 0+57 RT
 STA. 3+58 RT

BITUMINOUS CONCRETE GUTTERS AND TRAFFIC ISLANDS
~~STA. 0+50 - STA. 1+80 RT~~
 STA. 1+20 - STA. 2+61 RT
 STA. 3+46 - STA. 4+ 61 RT

6 INCH UNDERDRAIN PIPE
 STA. 3+15 LT - STA. 3+67 RT
 3+ 67 RT 3+ 75 LT

REMOVING SIGNS
 AS SHOWN - 14

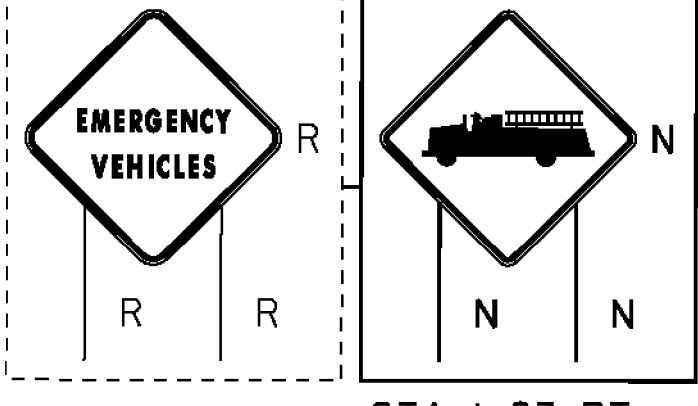


- LEGEND**
- MAILBOX
 - BORING
 - SIGN
 - HYDRANT
 - MANHOLE
 - WATER SHUT OFF (WSO)
 - GAS PIPELINE MARKER
 - CATCH BASIN / DROP INLET
 - CURB INLET
 - TRAFFIC CONTROL BOX
 - PARKING METER
 - UTILITY POLE

- SIGN LEGEND**
- R = REMOVE
 - R&S = REMOVE AND SALVAGE
 - RET = RETAIN
 - S = SALVAGED
 - N = NEW
 - B-B = BACK TO BACK
 - = EXISTING
 - = NEW

CURVE #1
 DELTA = 22°39' 09"
 D = 38° 11' 50"
 R = 150.00'
 T = 30.04'
 L = 59.30'
 E = 2.98'
 DESIGN SPEED 30 MPH
 MATCH EXISTING BANKING

CURVE #2
 DELTA = 22°58' 26"
 D = 4°05' 33"
 R = 1400.00'
 T = 284.50'
 L = 561.36'
 E = 28.62'
 DESIGN SPEED 30 MPH
 SEE SUPERELEVATION DIAGRAMS
 FOR BANKING INFORMATION



STA. 1+83 RT

SEE ATTACHED RETAINING WALL PLANS
 SEE COD #2

SEH
 2-20-14

DATUM
 VERTICAL NAVD 88
 HORIZONTAL NAD 83

PROJECT LAYOUT SHEET 1

PROJECT NAME: MONTGOMERY-WESTFIELD
 PROJECT NUMBER: STP 2906(I)

FILE NAME: pi0ci90.dgn
 PROJECT LEADER: CDL
 DESIGNED BY: SJL
 PLOT FILE: pi0ci90_22.I

PLOT DATE: 9/5/12
 DRAWN BY: SJL
 CHECKED BY: EPD
 SHEET 22 OF 178

