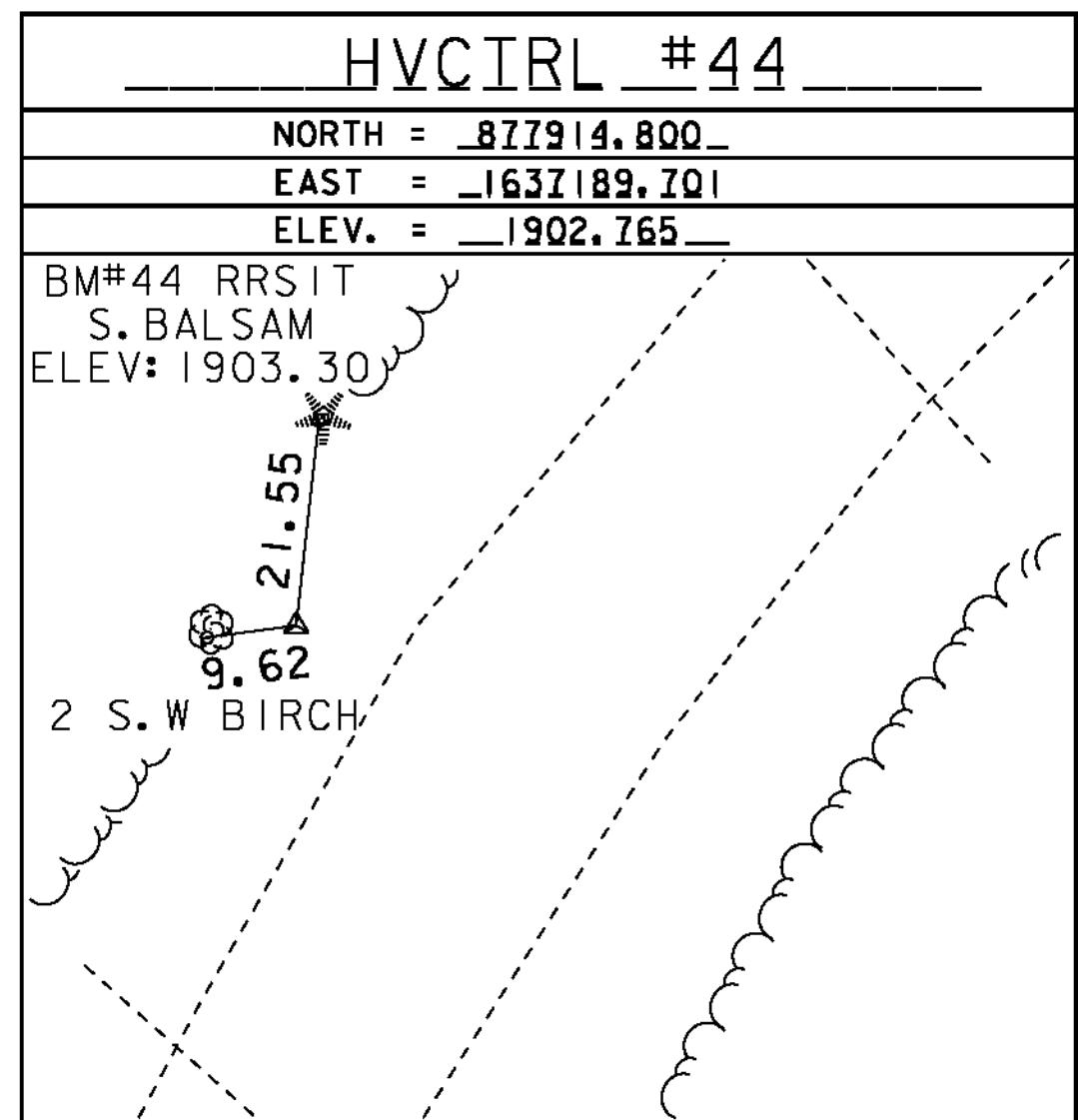
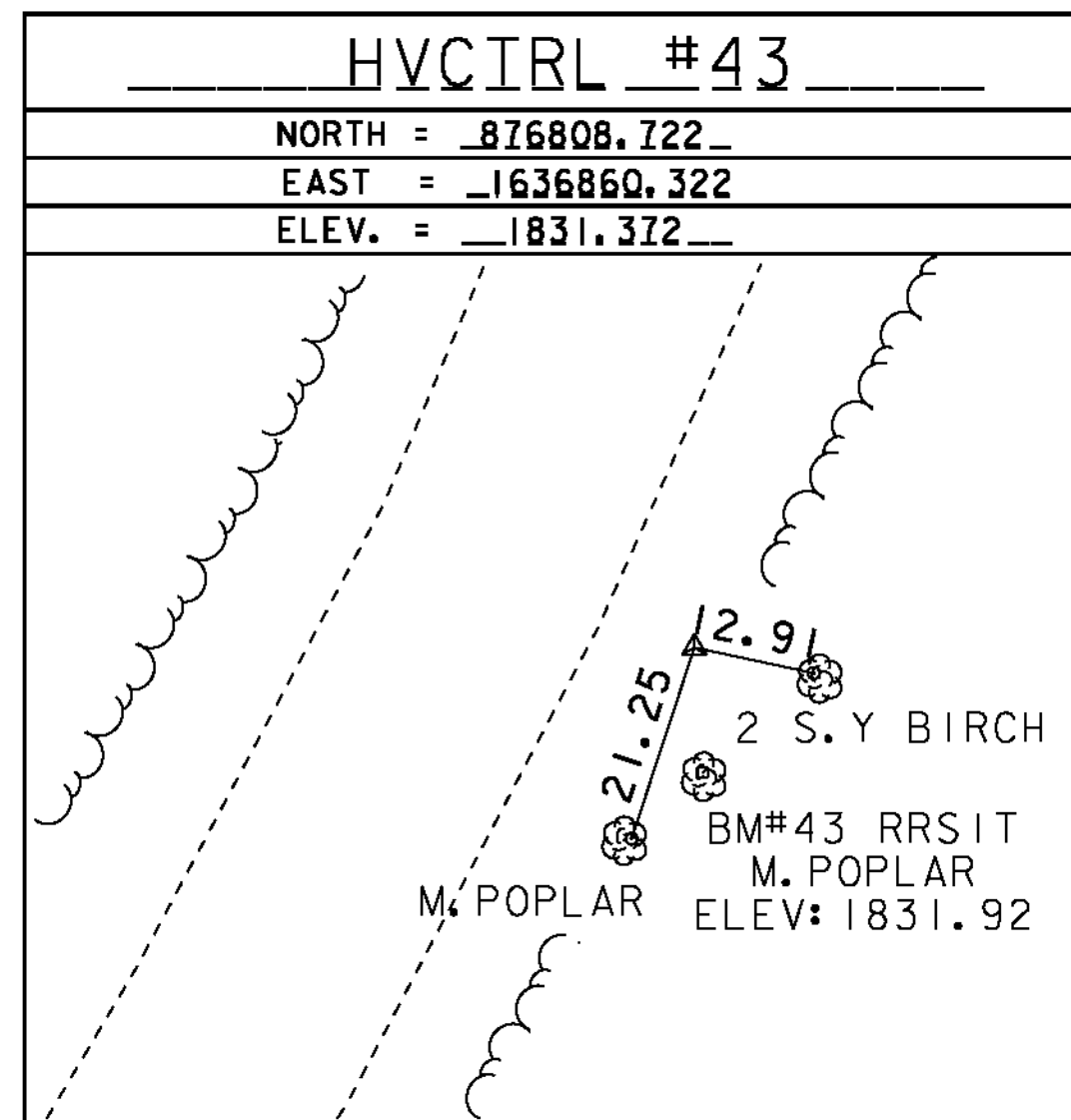
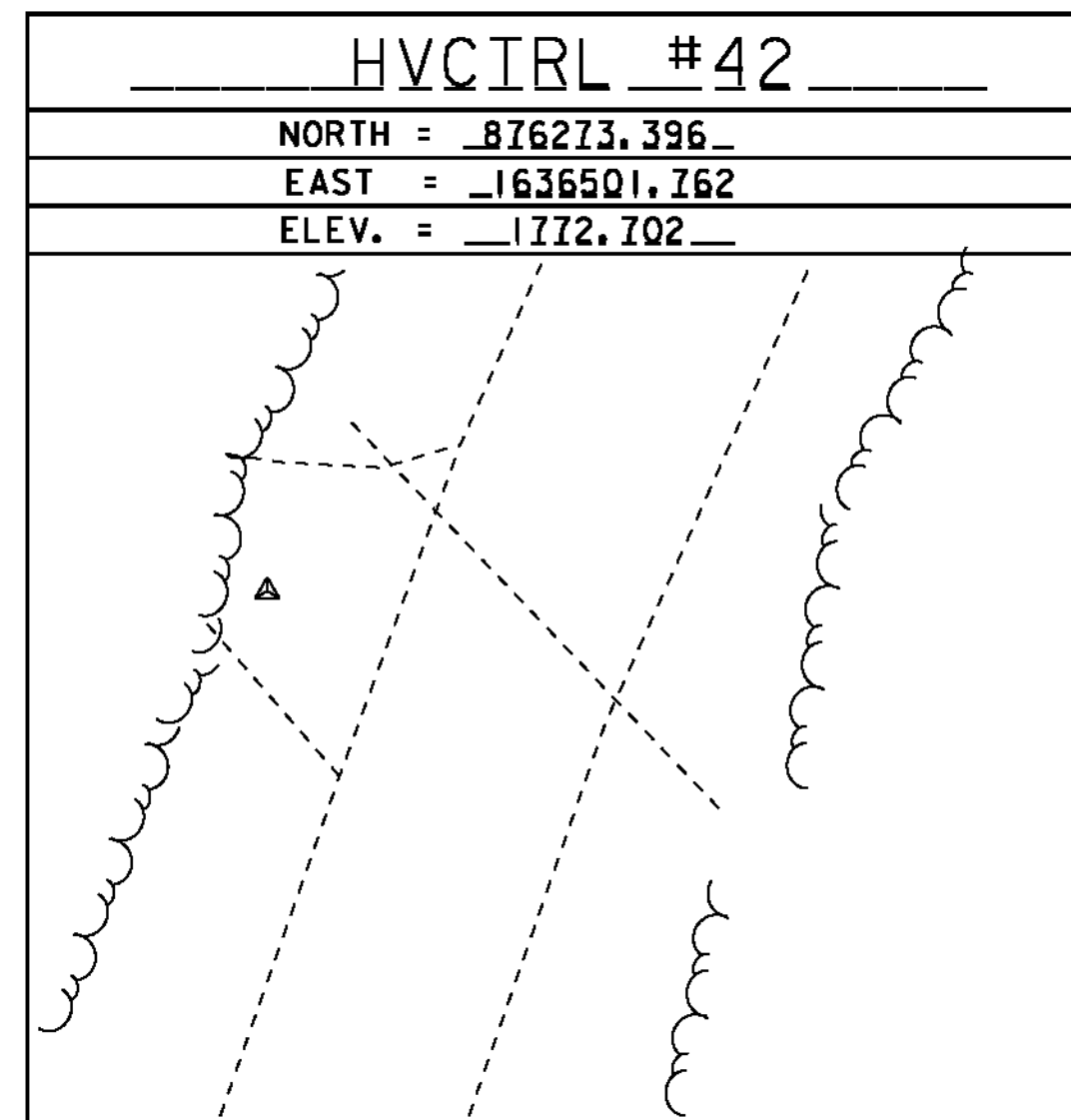
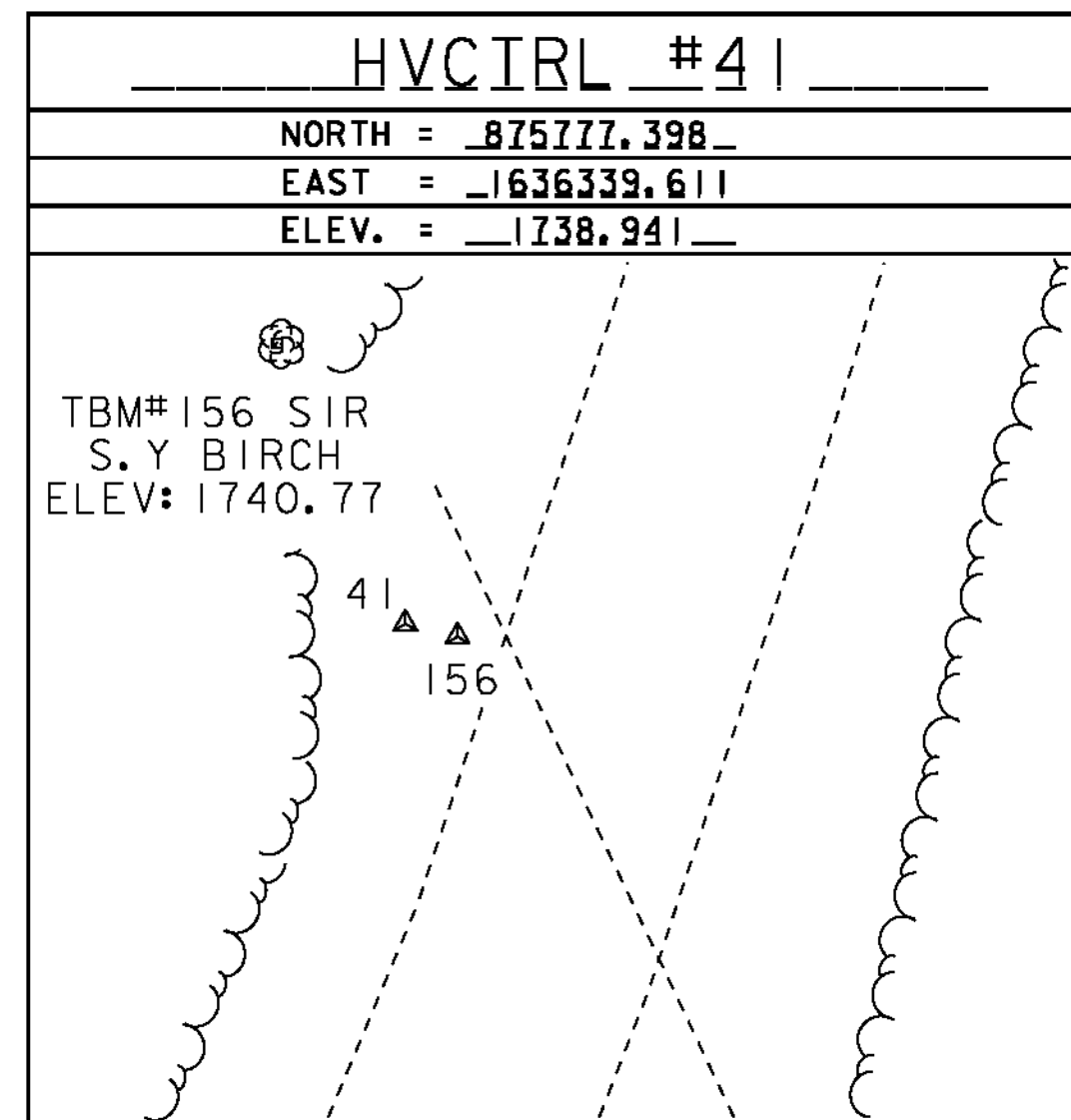
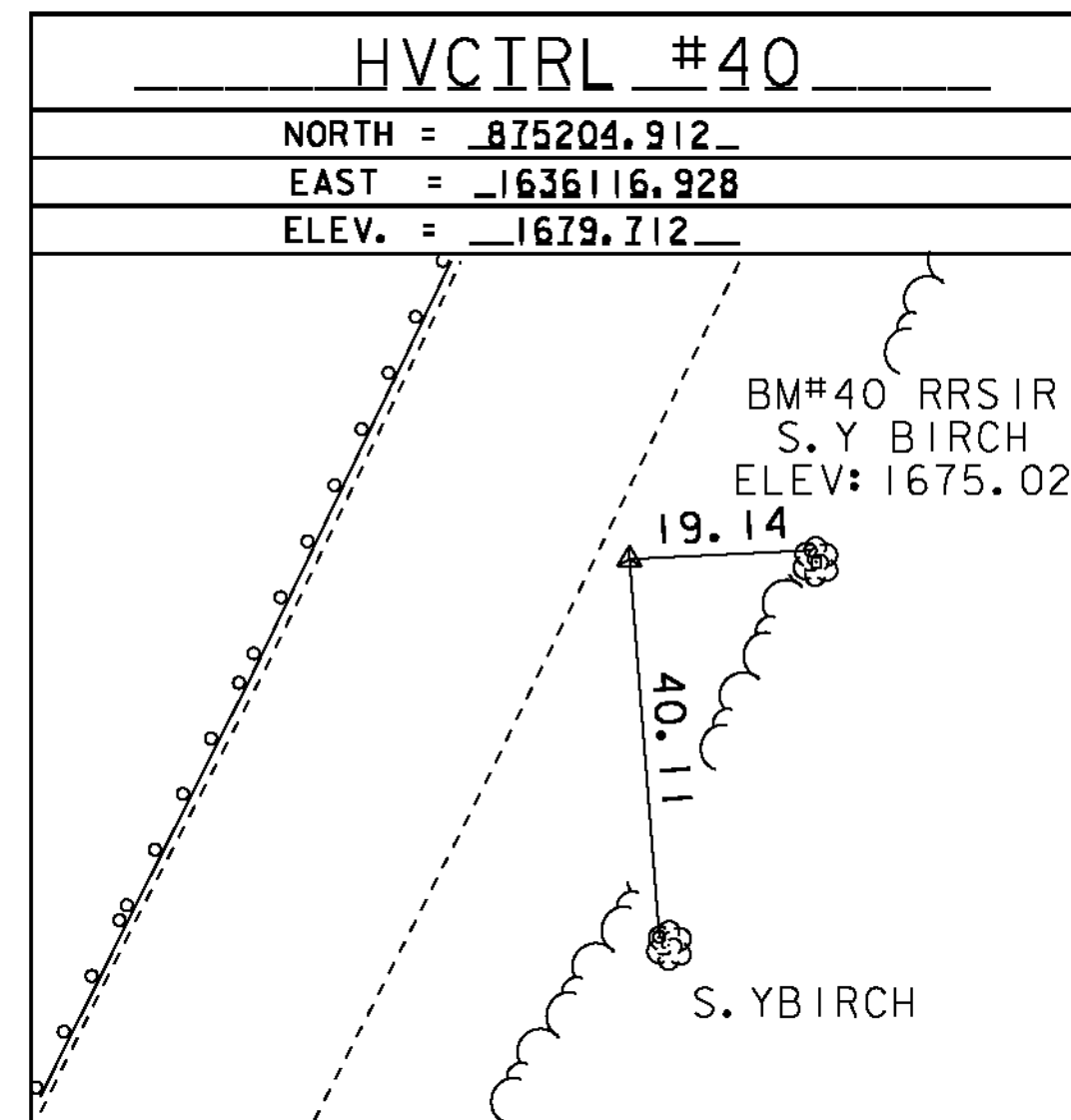
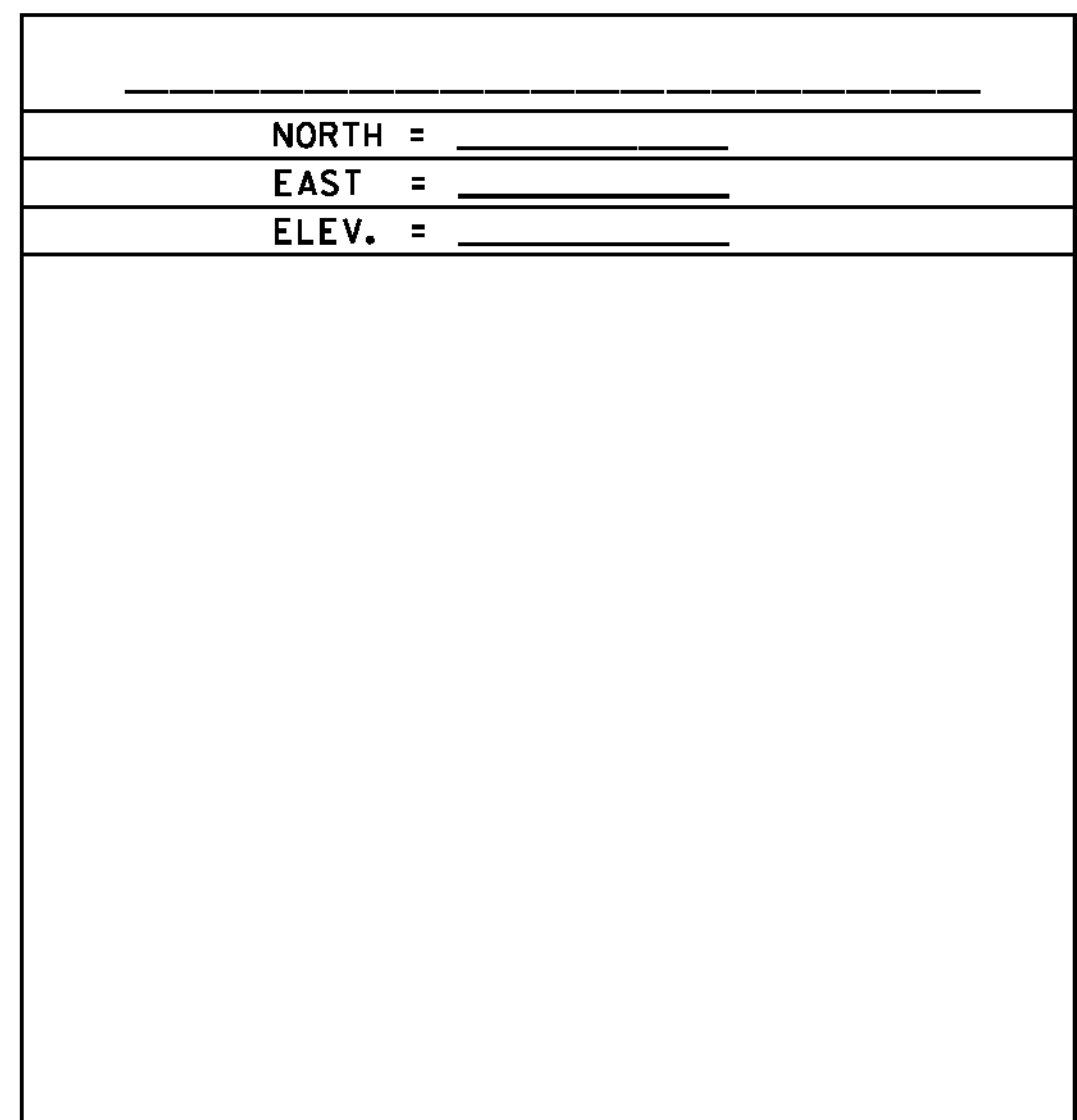
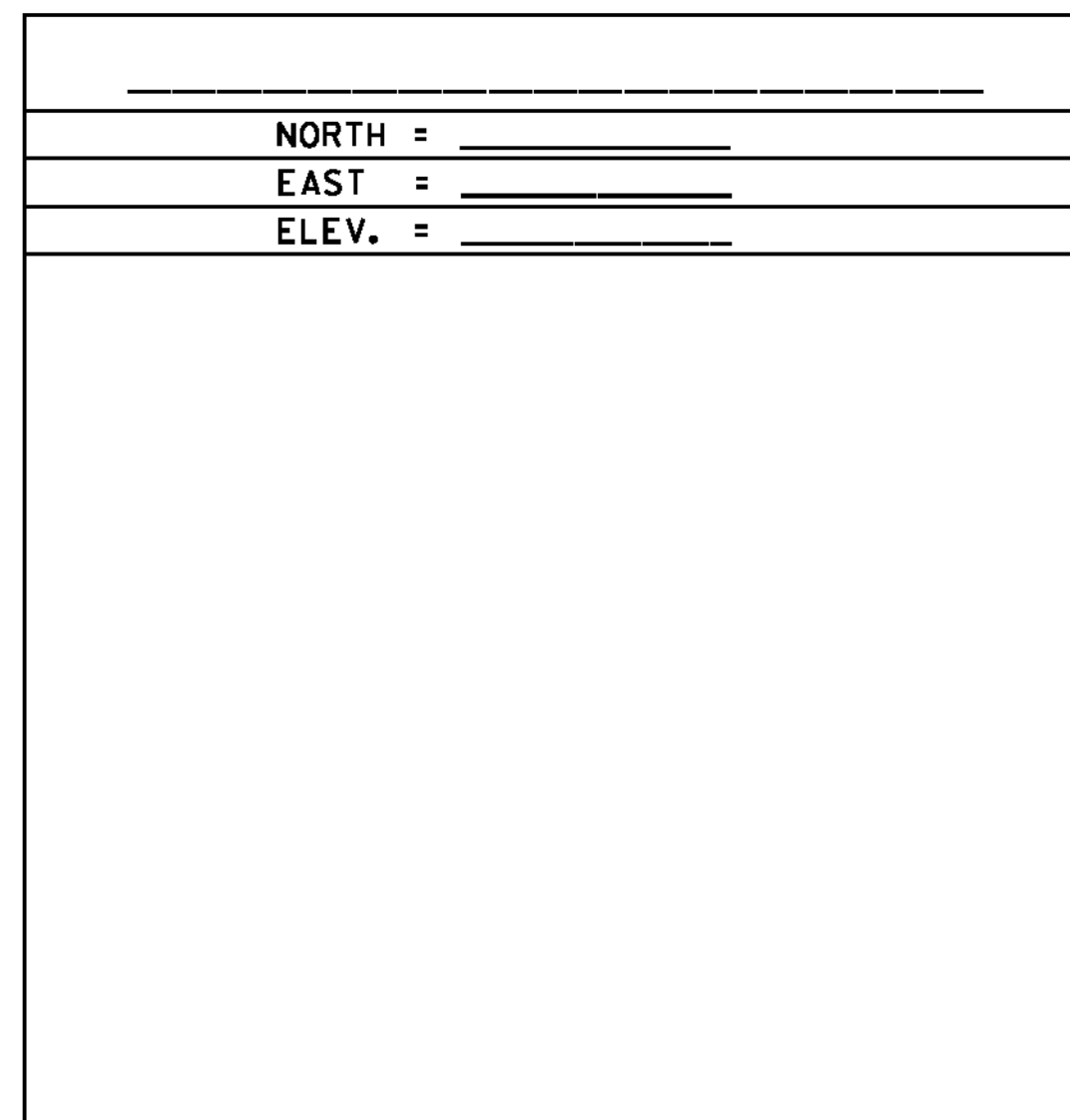
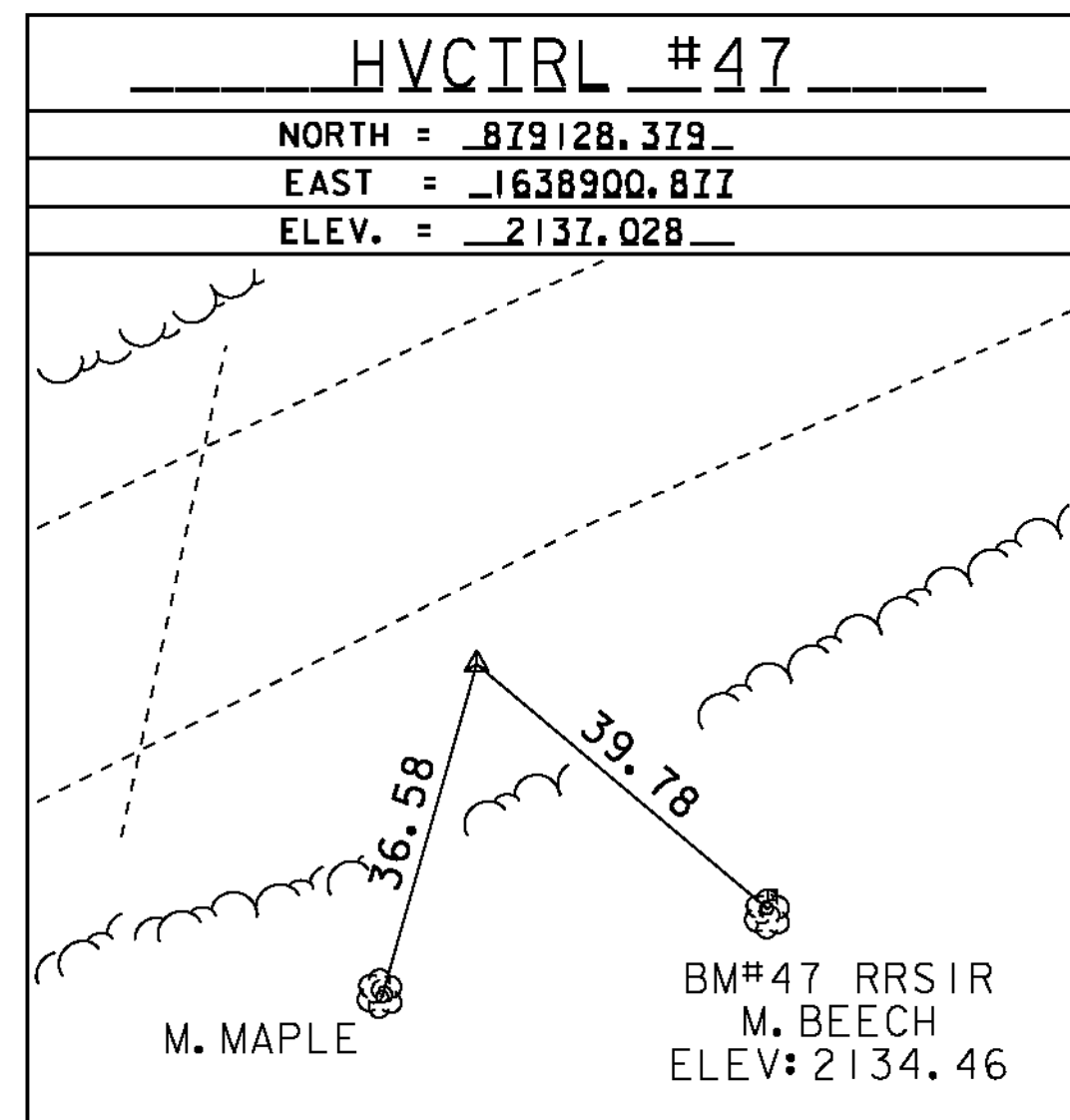
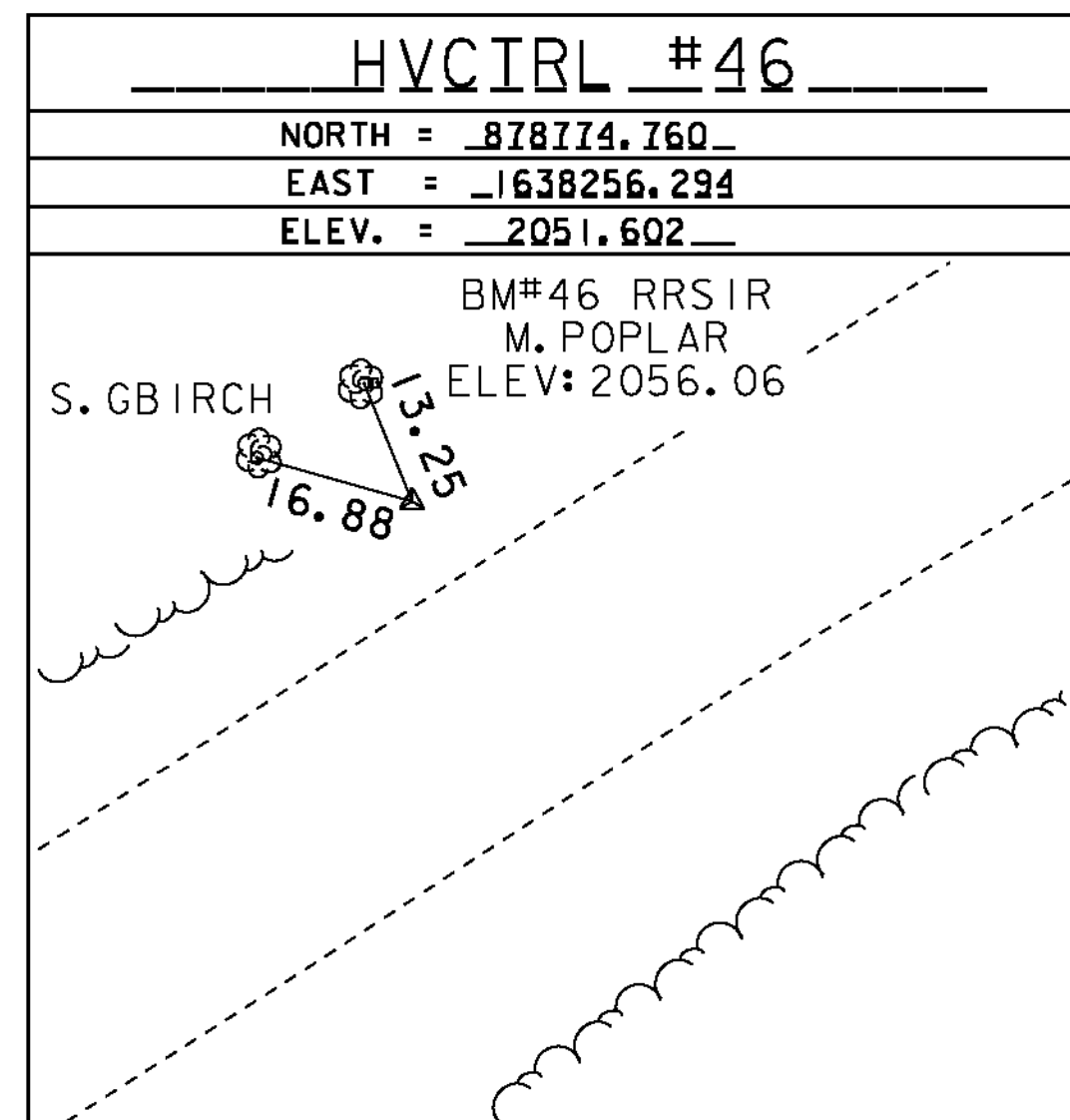
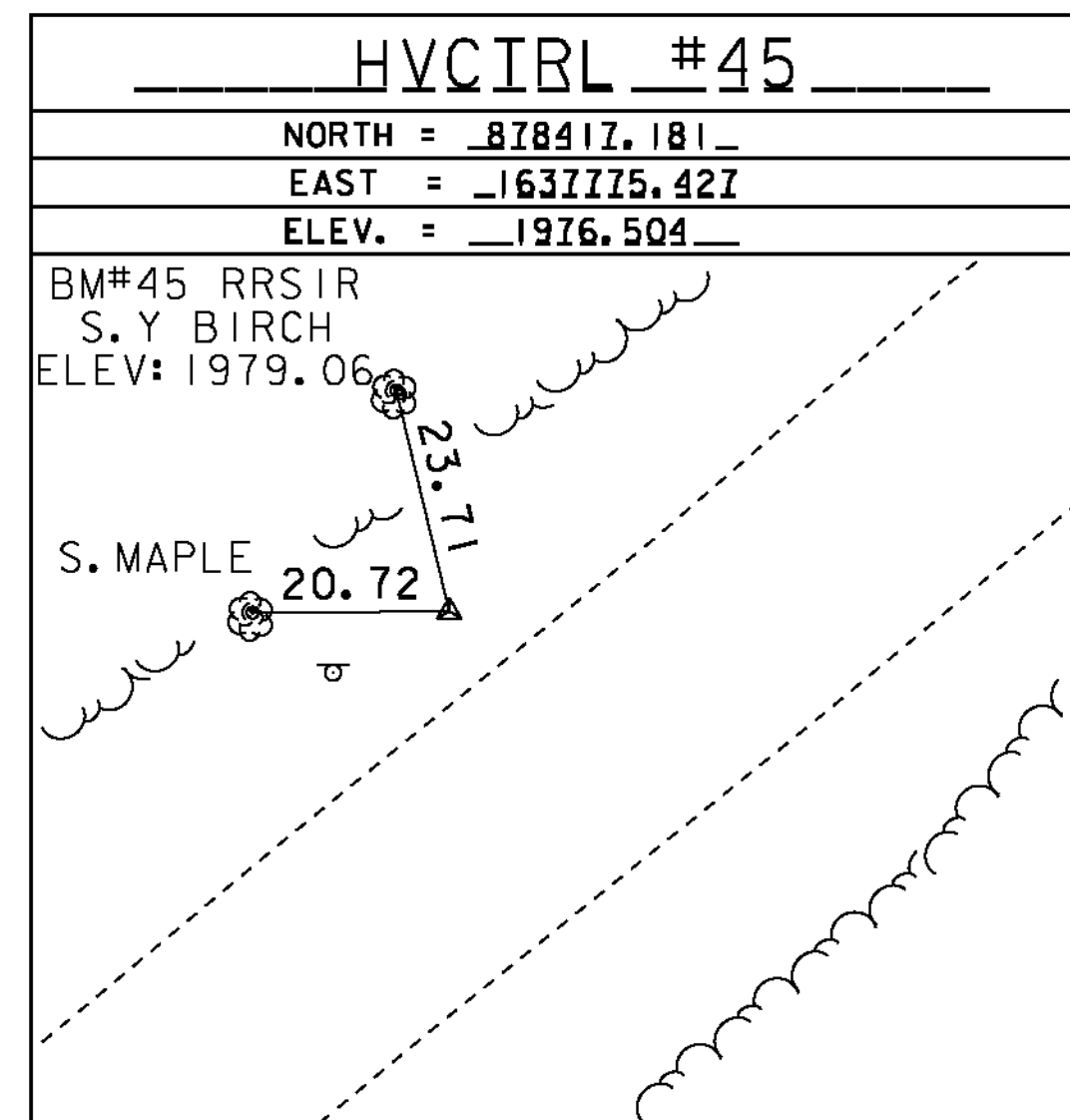


TRAVERSE TIES



TRAVERSE TIES



GPS CONTROL POINTS

HVCIRL #48

LONG TRAIL BOLI

NORTH = 879418.547
 EAST = -1639347.759
 ELEV. = -2203.649

GENERAL LOCATION, WESTFIELD, VT.
 TO REACH FROM THE INTERSECTION OF VT ROUTE 242 AND VT ROUTE 118 IN MONTGOMERY CENTER GO EAST ALONG VT ROUTE 242 FOR 6.3 MI (10.1 KM) TO A GRAVEL PARKING AREA ON THE RIGHT, AT THE CROSSING OF THE LONG TRAIL HIKING PATH AND THE SITE OF THE MARK ON THE RIGHT. TO REACH FROM THE INTERSECTION OF VT ROUTE 242 AND VT ROUTE 101 IN TROY GO WEST ALONG VT ROUTE 242 FOR 6.5 MI (10.5 KM) TO THE SITE OF THE MARK. IT IS ABOUT 10 M (32.8 FT) SOUTHWEST OF THE ENTRANCE TO THE LONG TRAIL AND THE CATAMOUNT TRAIL. THE MARK IS A 3/4 INCH (19 MM) DIAMETER GUARD RAIL BOLT SET FLUSH WITH THE GROUND SURFACE IN THE TOP OF MASSIVE ROCK OUTCROP WHICH IS PARTIALLY EXPOSED BY EROSION. IT IS 8.5 M (27.9 FT) SOUTHWEST OF AND ABOUT 0.3 M (1.0 FT) LOWER THAN THE CENTERLINE OF VT ROUTE 242, 10.9 M (35.8 FT) NORTHEAST OF THE CENTER OF A 1.9 M (6.2 FT) X 1.1 M (3.6 FT) BOULDER WHICH PROJECTS 0.6 M (2.0 FT) ABOVE GROUND SURFACE AND 14.7 M (48.2 FT) WEST OF A 25 CM (10 INCH) MAPLE WITH LONG TRAIL MARKING (A VERTICAL WHITE LINE PAINTED AT EYE LEVEL).

HVCIRL #100

VOYAGEUR

NORTH = 871796.133
 EAST = -1633426.010
 ELEV. = -1522.464

GENERAL LOCATION, WESTFIELD, VT. OWNERSHIP, SHARON AND ROLF ANDERSON, ROUTE 242 BOX 1010, MONTGOMERY CENTER, VT 05471. THE MARK IS ABOUT 65 M NORTHWEST OF THE ANDERSONS TWO-STORY HOUSE WITH AN ELL. IT IS SET 10 CM (4 INCHES) BELOW GROUND SURFACE IN THE TOP OF A 30 CM (12 INCHES) DIAMETER CONCRETE MONUMENT. IT IS 34.9 M (114.5 FT) SOUTHWEST OF AND ABOUT 5 M (16.4 FT) HIGHER THAN THE CENTERLINE OF VT ROUTE 242, 16.5 M (54.1 FT) NORTH NORTHWEST OF THE CENTERLINE OF THE GRAVEL DRIVE, 60.3 M (197.8 FT) EAST NORTHEAST OF POLE NO 22G/31A/1/3/99, 11.7 M (38.4 FT) NORTHWEST OF A 10 CM (4 INCHES) APPLE, 14.8 M (48.6 FT) WEST OF THE MOST NORTHERLY (OF 2) SQUARE WOODEN LAMPPOST, 9.9 M (32.5 FT) NORTHWEST OF THE WEST CORNER OF THE GRAVEL PARKING LOT, 24.1 M (79.1 FT) SOUTH OF A 40 CM (16 INCHES) POPLAR, AND 17.5 M (57.4 FT) SOUTHWEST OF A FIBERGLASS WITNESS POST.

DATUM

VERTICAL NAD83

HORIZONTAL NAD83

ADJUSTMENT COMPASS



TIE SHEET 4

PROJECT NAME: MONTGOMERY-WESTFIELD
 PROJECT NUMBER: STP 2906(1)

FILE NAME: pi0ci90.dgn
 PROJECT LEADER: CDL
 DESIGNED BY: SJL
 PLOT FILE: pi0ci90_6.t

PLOT DATE: 9/5/12
 DRAWN BY: R. BULLOCK
 CHECKED BY: CDL
 SHEET 6 OF 178