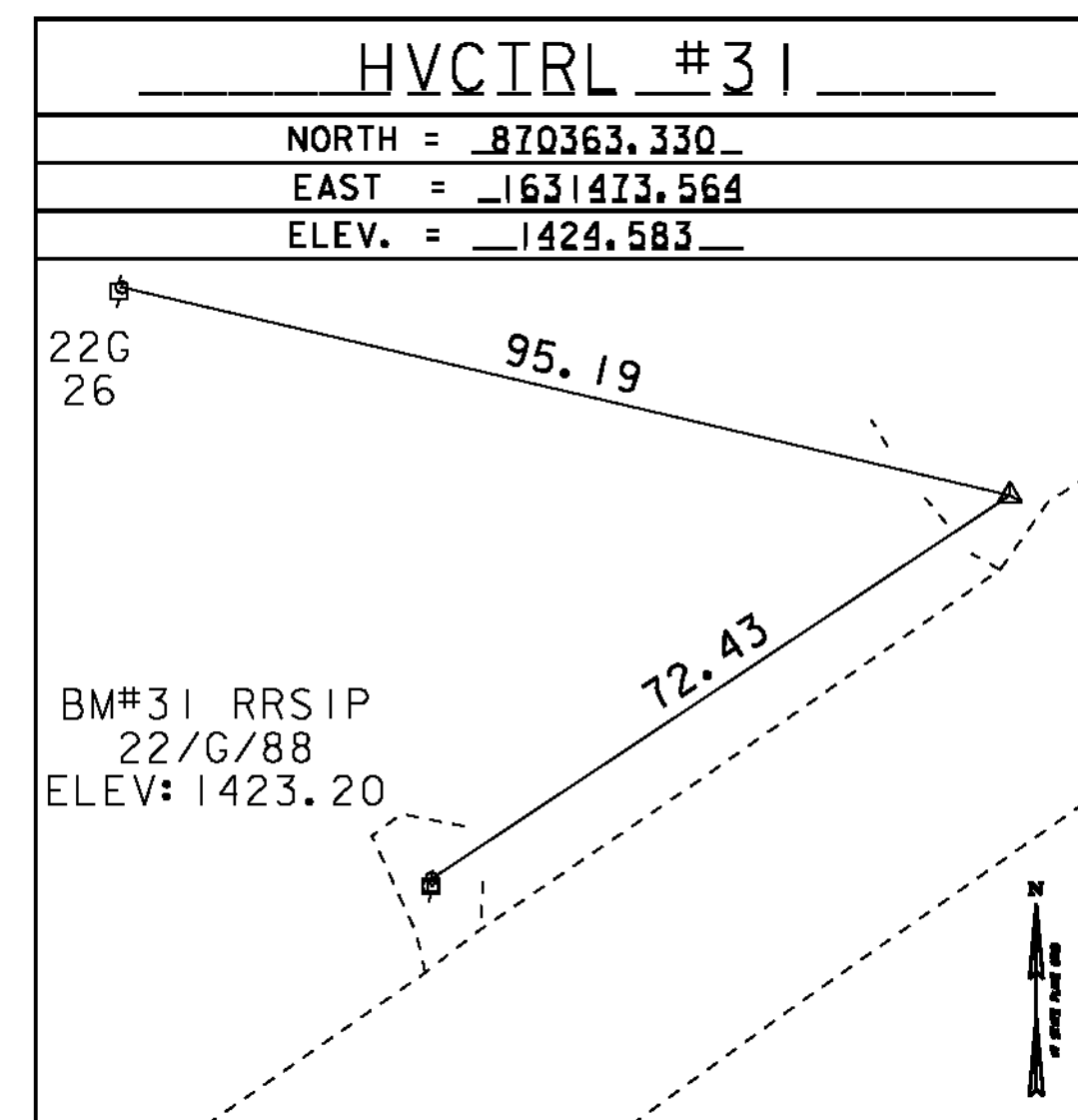
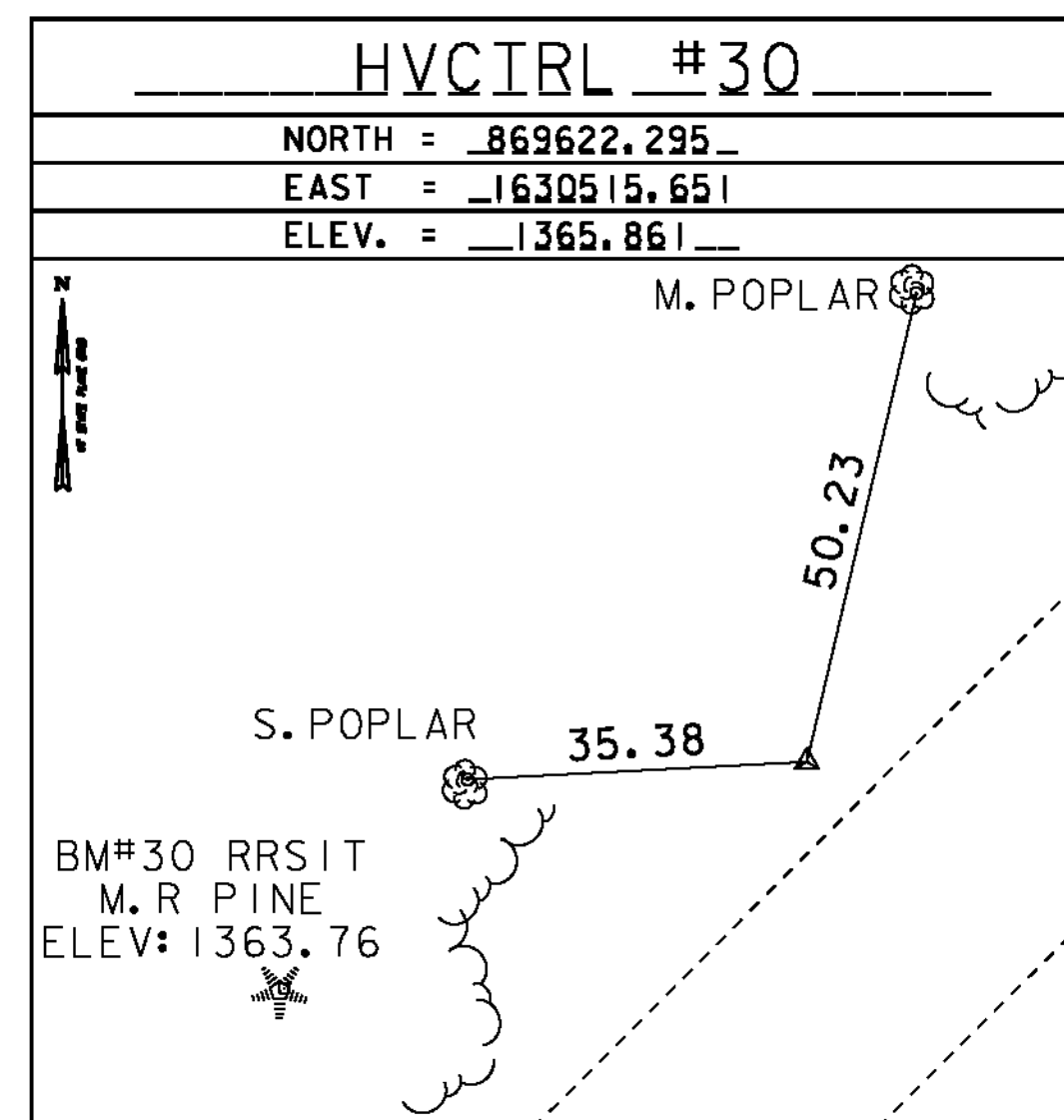
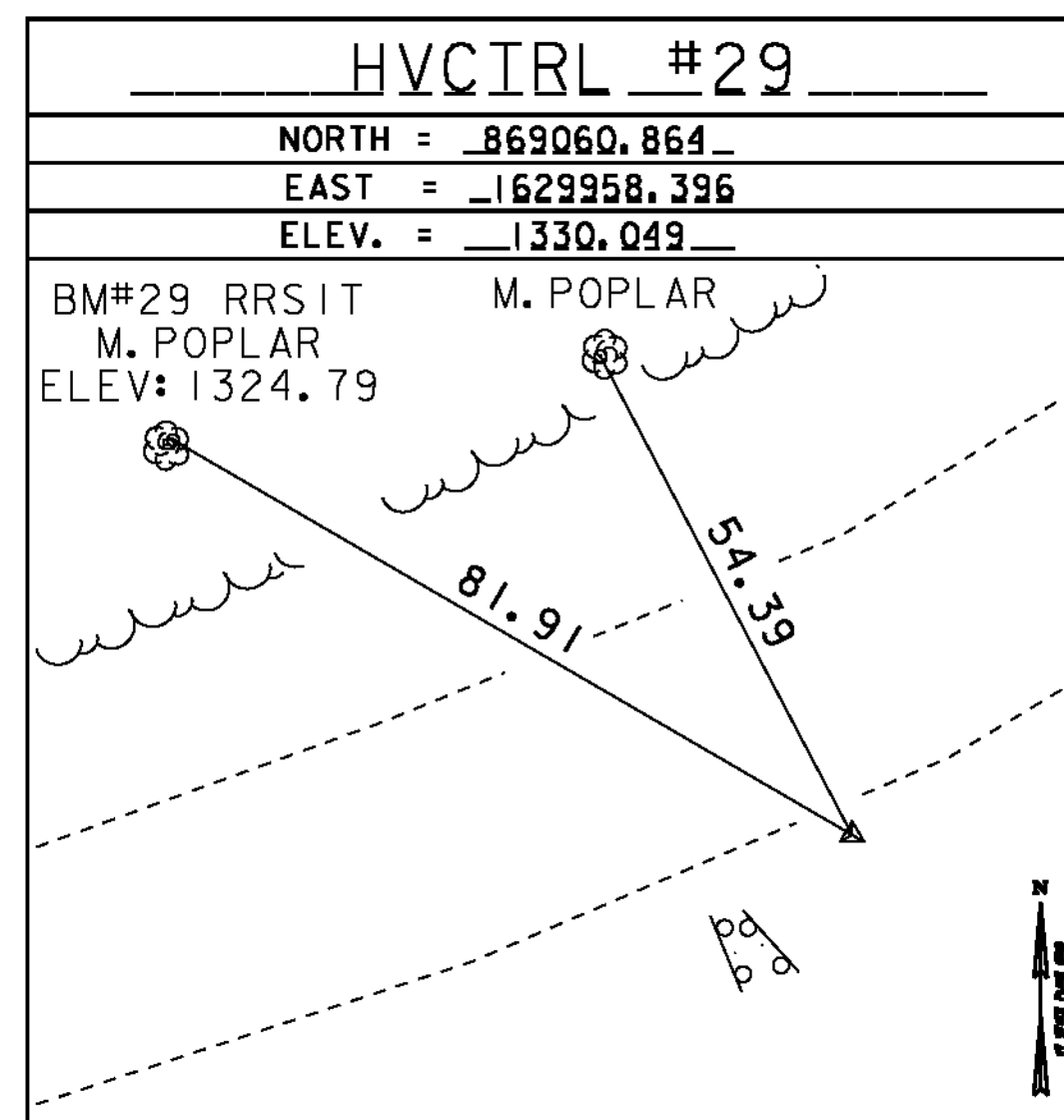
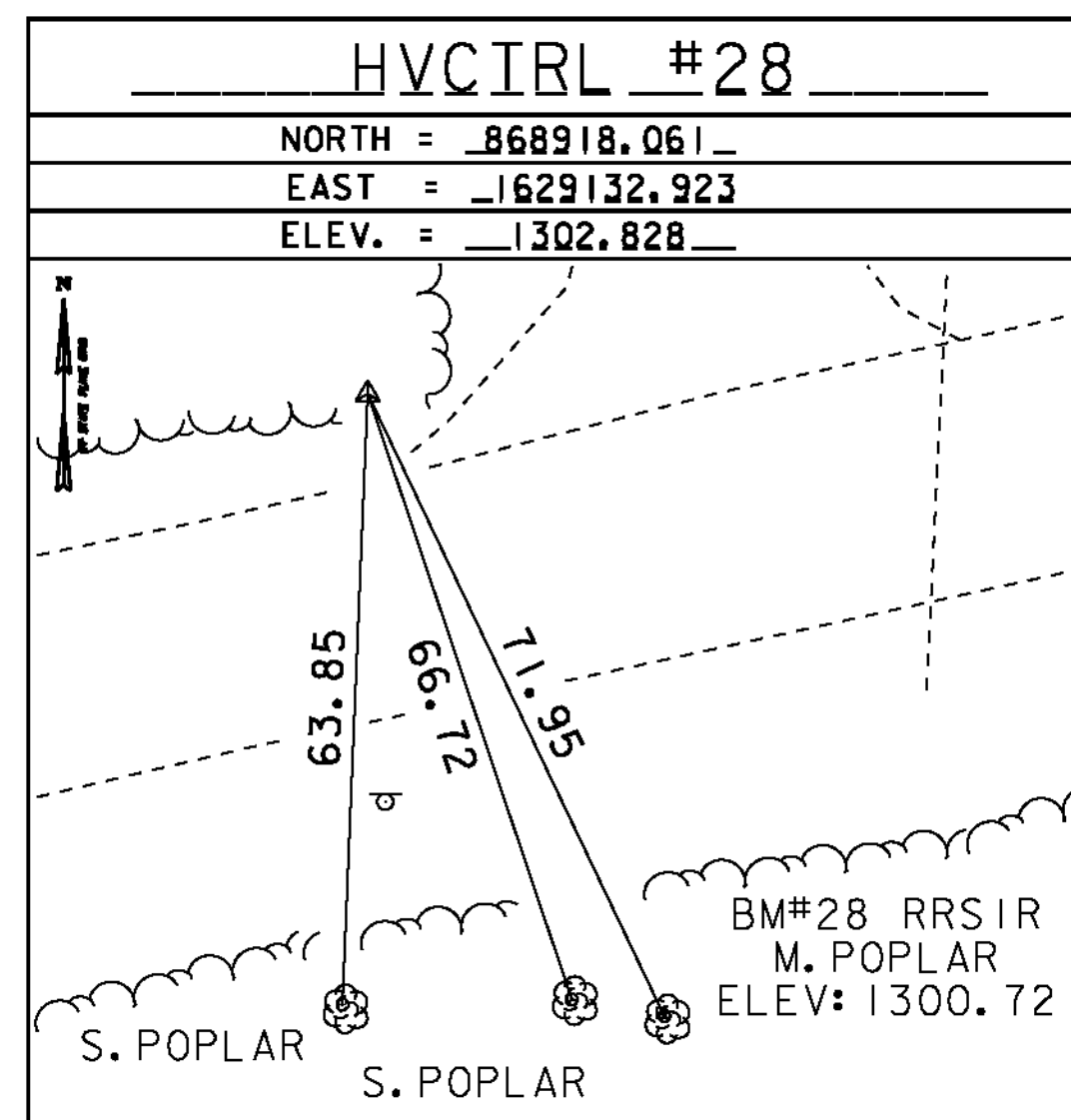
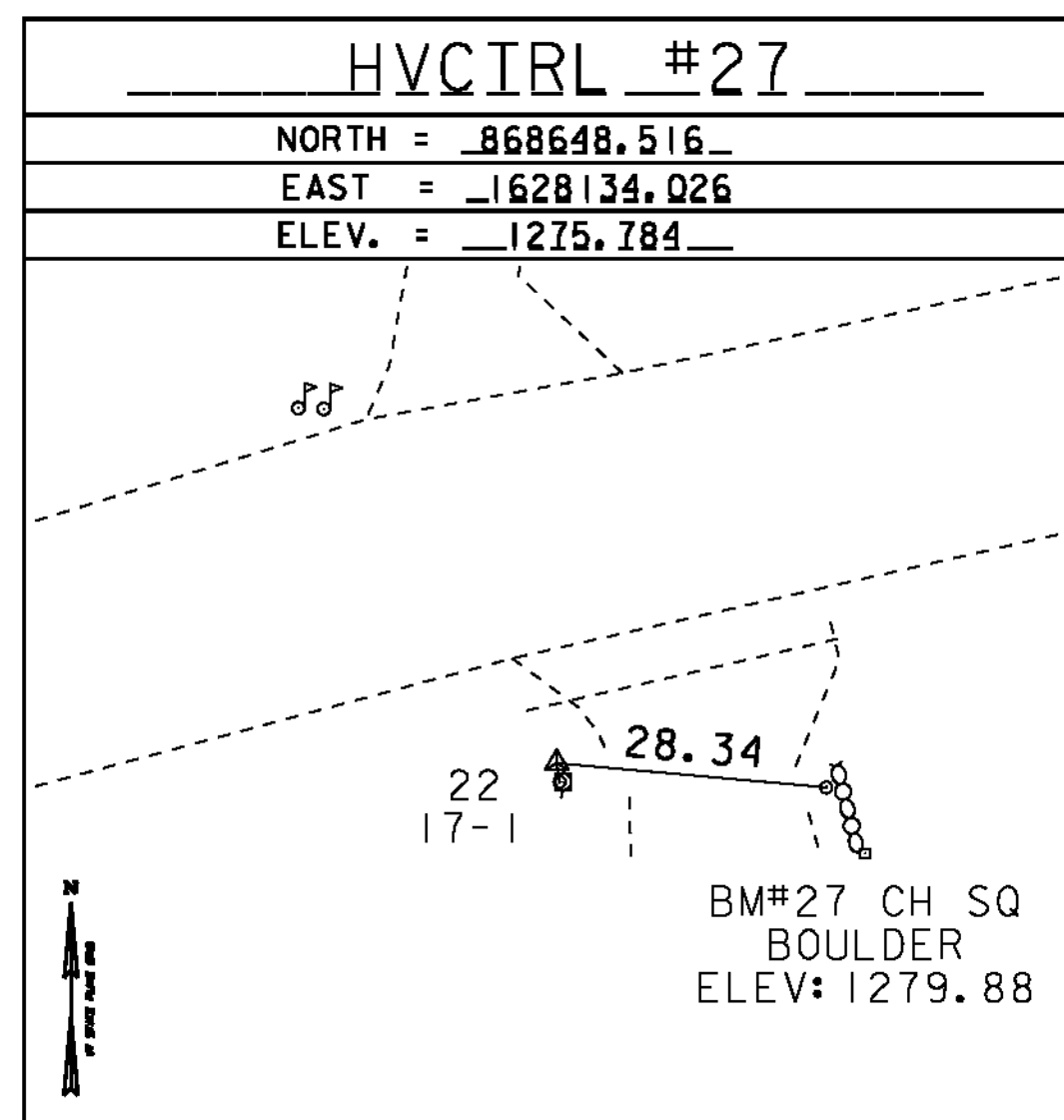


TRAVERSE TIES



GPS CONTROL POINTS

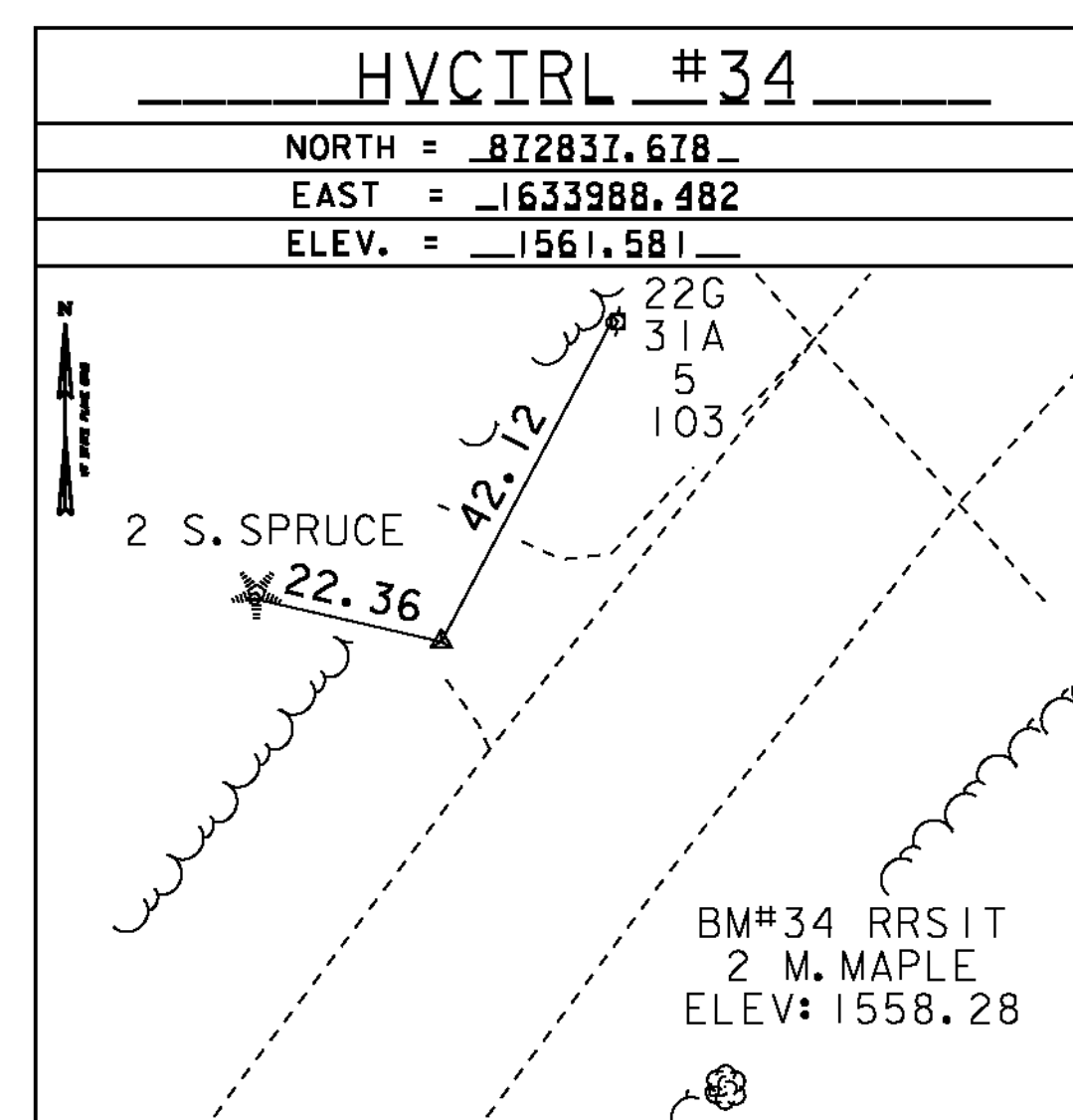
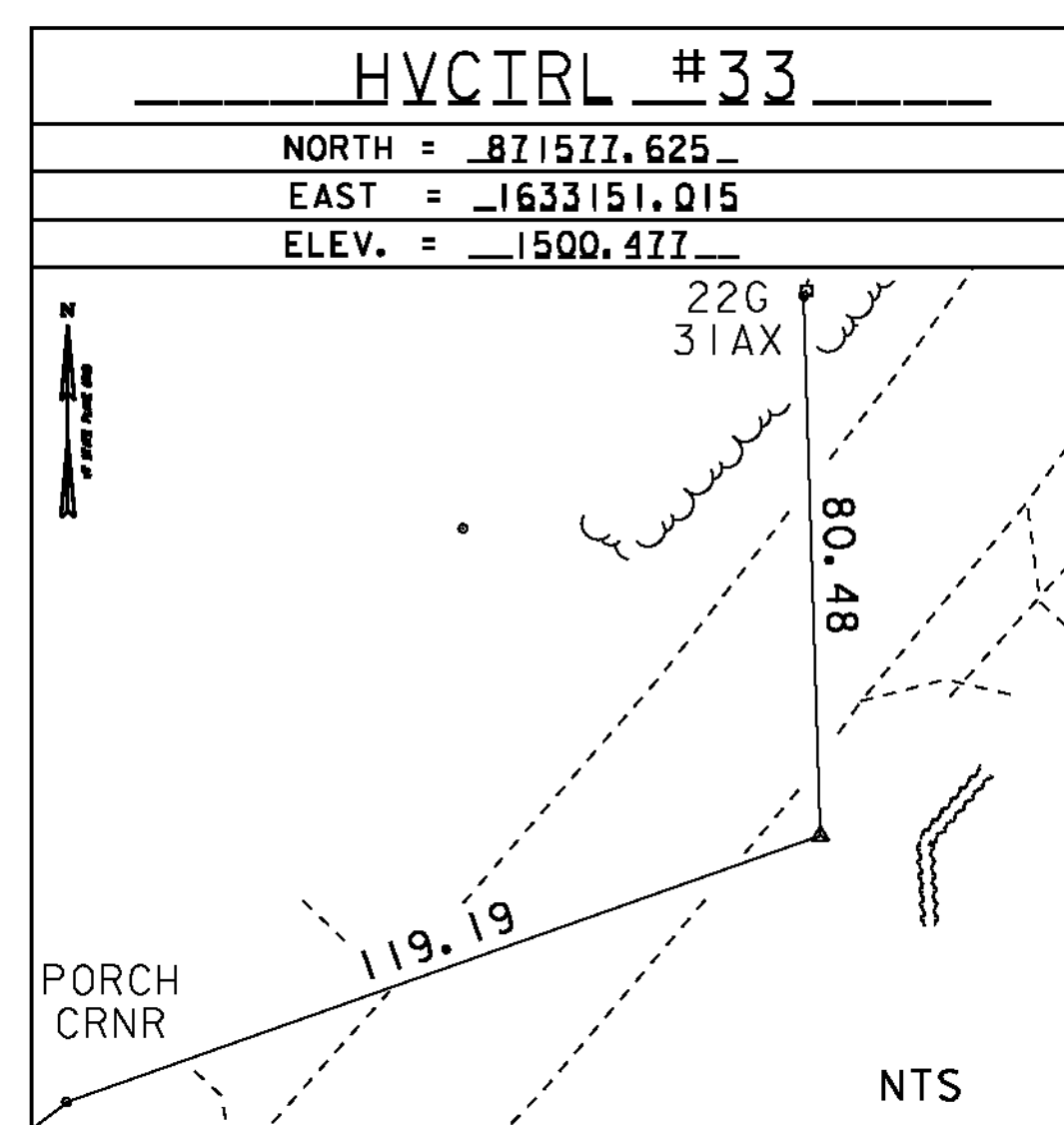
HVCIRL #32

VOYAGEUR_AZ_MK

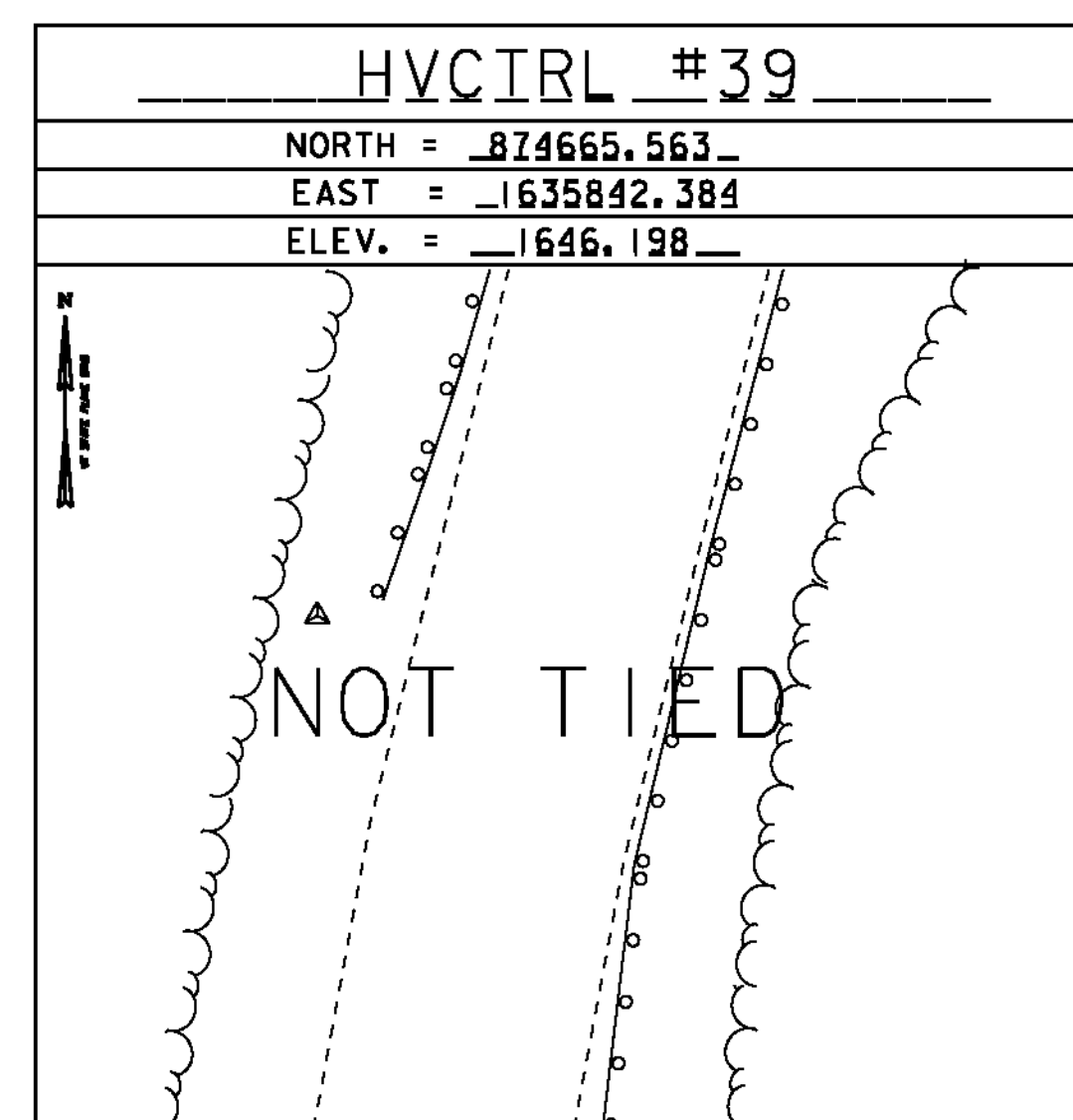
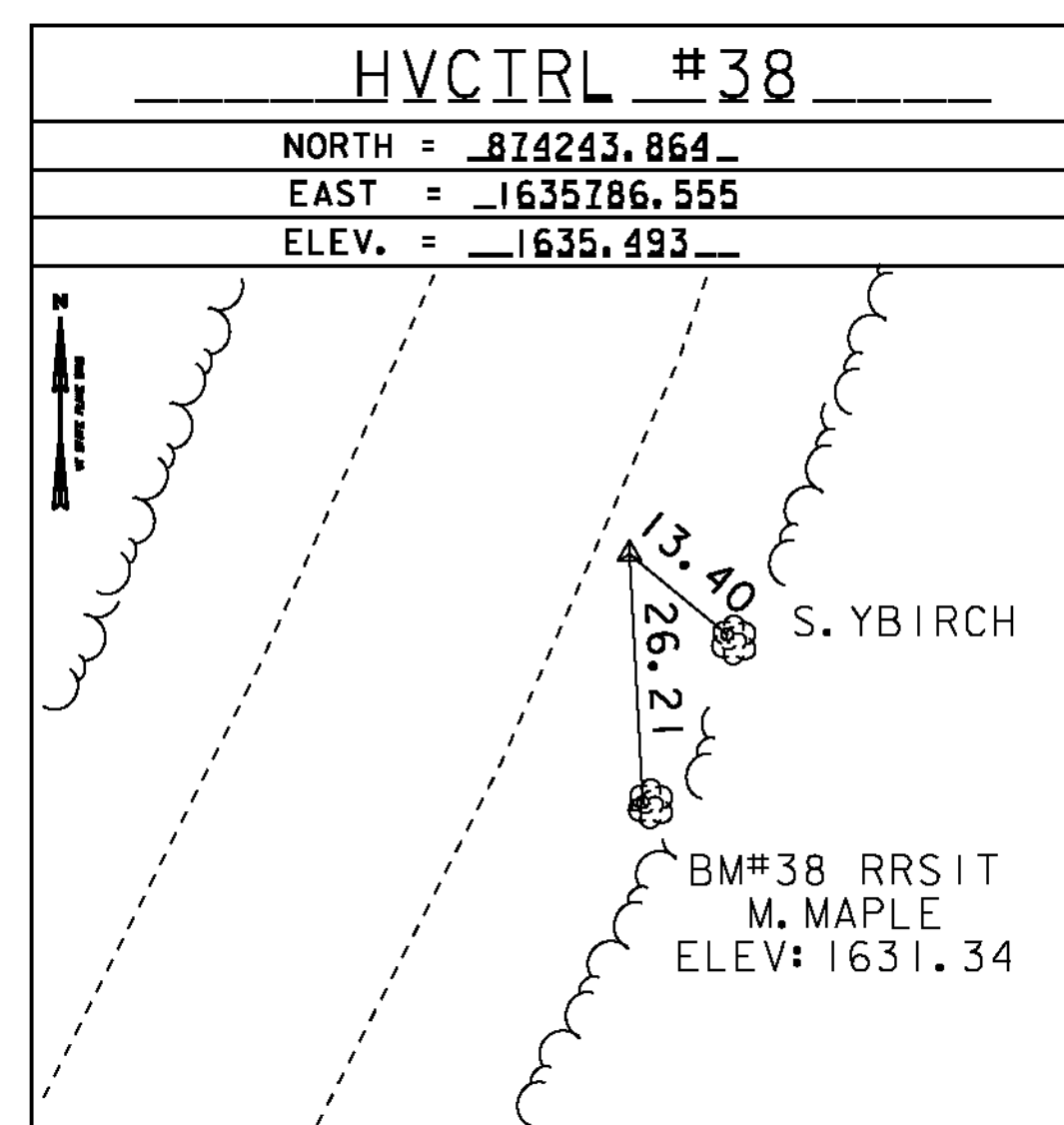
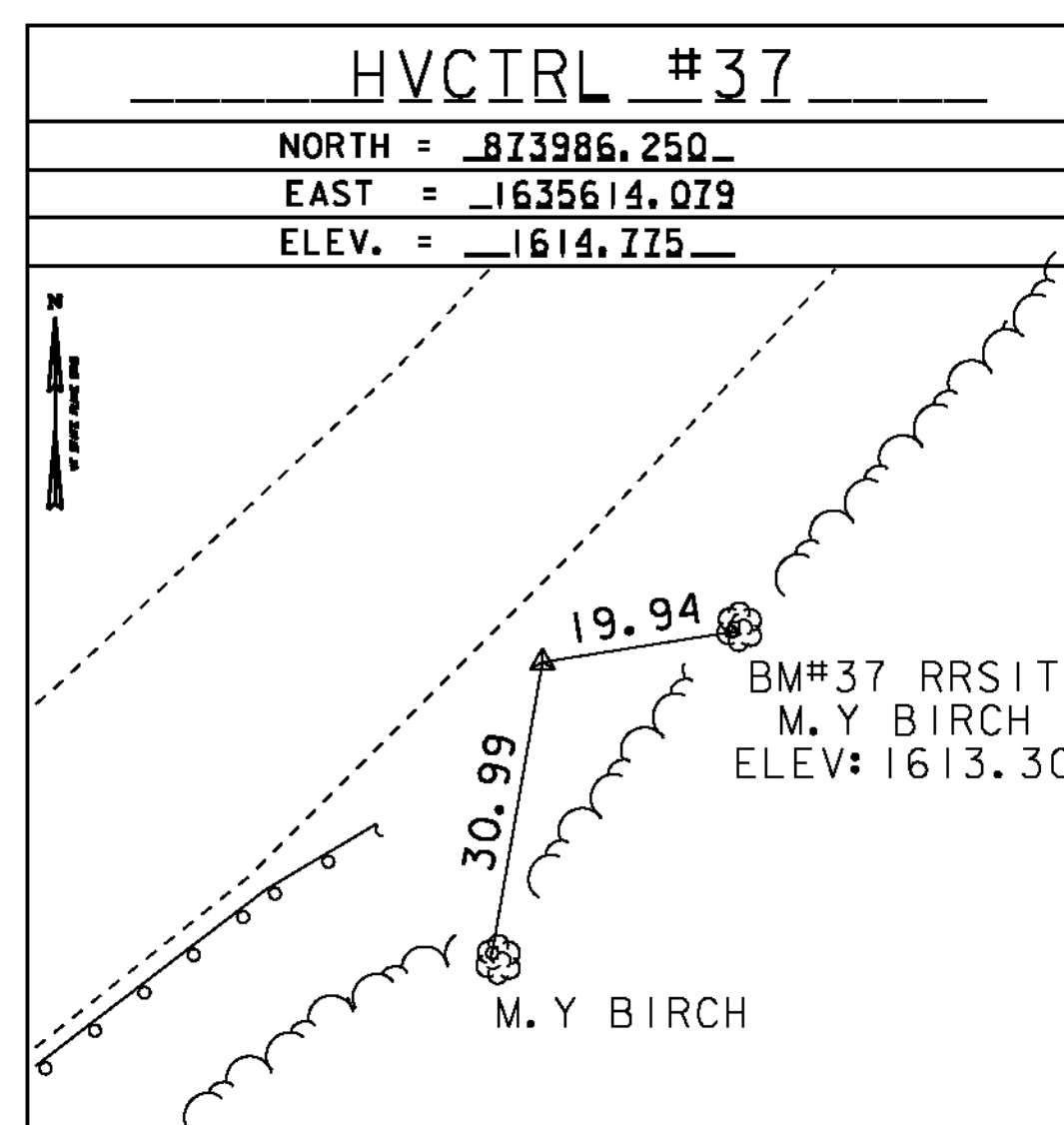
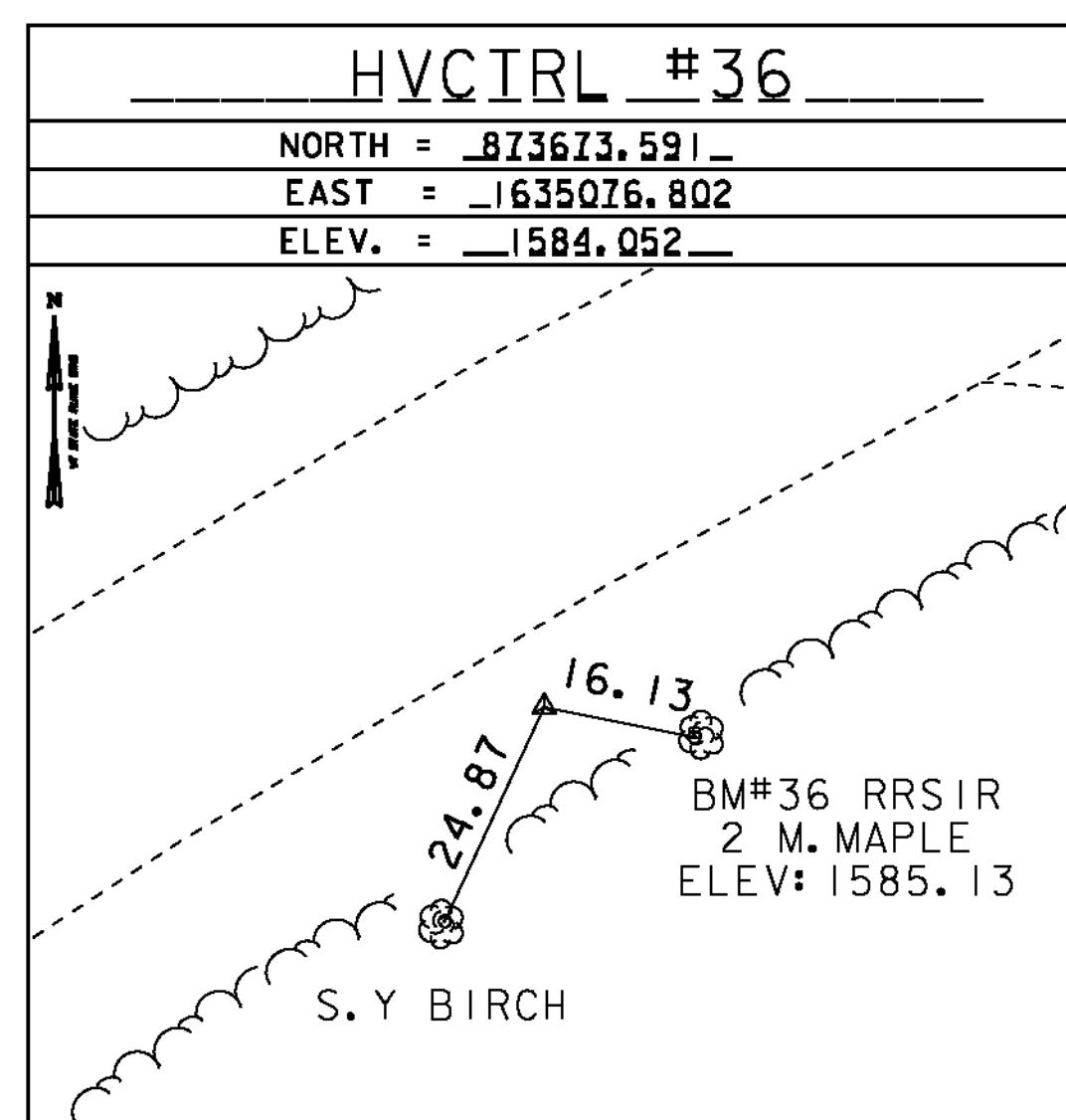
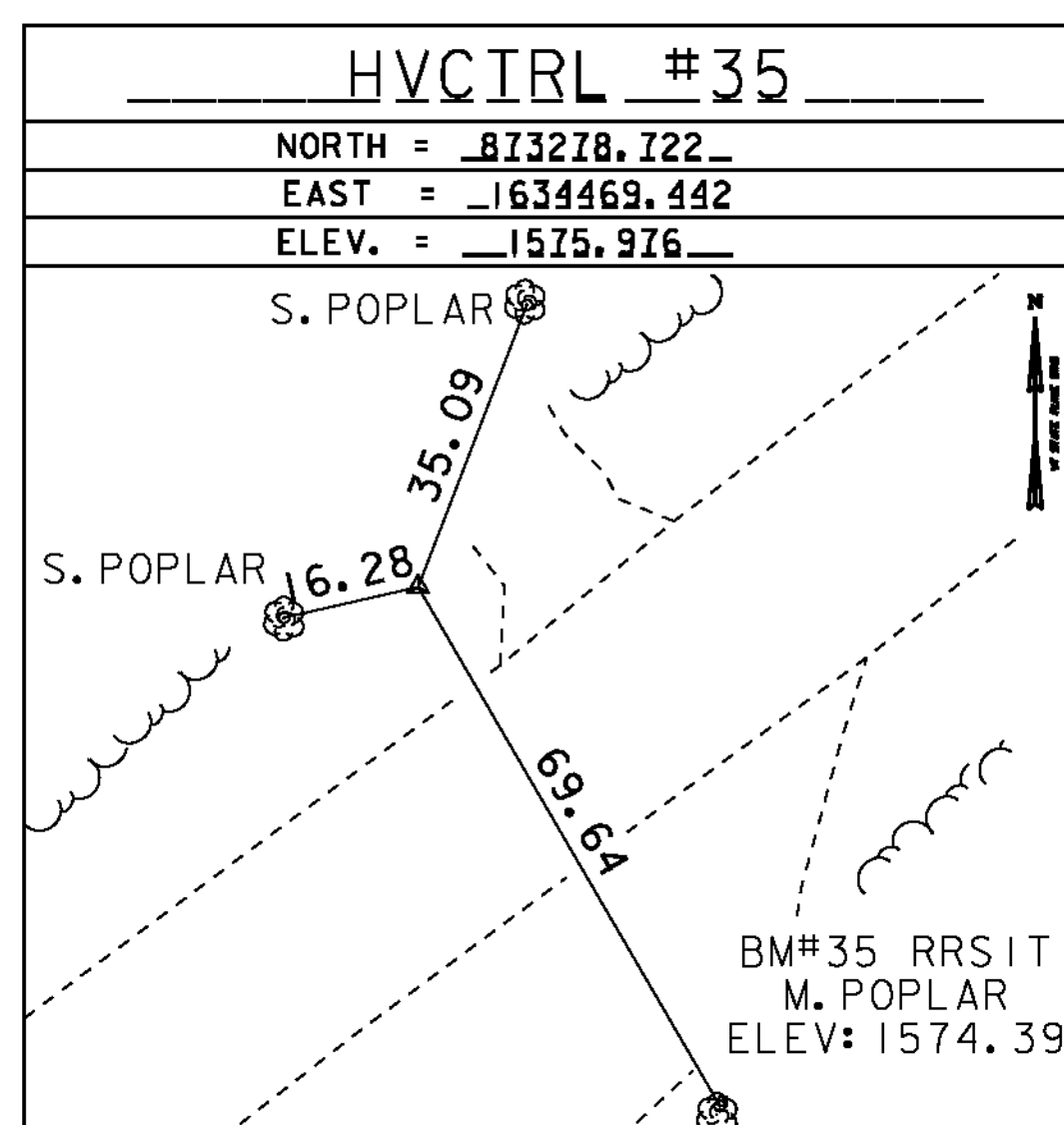
NORTH = 870994.451
 EAST = 1632444.979
 ELEV. = 1469.319

GENERAL LOCATION, WESTFIELD, VT.
 TO REACH FROM THE INTERSECTION OF VT ROUTE 242 AND VT ROUTE 118 IN MONTGOMERY CENTER GO EAST ALONG VT ROUTE 242 FOR 2.3 MI (3.7 KM) TO THE INTERSECTION OF AMIDON ROAD RIGHT. CONTINUE STRAIGHT AHEAD AND GO EAST ALONG VT ROUTE 242 FOR 1.0 MI (1.6 KM) TO THE SITE OF THE MARK ON THE RIGHT. THE MARK IS SET 10 CM (4 INCHES) BELOW GROUND SURFACE IN THE TOP OF A 30 CM (12 INCH) DIAMETER CONCRETE MONUMENT. IT IS 10.7 M (35.1 FT) SOUTH OF AND ABOUT LEVEL WITH THE CENTERLINE OF VT ROUTE 242, 27.7 M (90.9 FT) EAST OF POLE NO 22/G/29/93, 24.3 M (79.7 FT) WEST OF POLE NO 22/G/29A/94 WITH TRANSFORMER AND 0.3 M (1.0 FT) NORTH OF A FIBERGLASS WITNESS POST.

TRAVERSE TIES



TRAVERSE TIES



DATUM	
VERTICAL	<u>NAD 88</u>
HORIZONTAL	<u>NAD 83 (07)</u>
ADJUSTMENT	<u>COMPASS</u>



TIE SHEET 3

PROJECT NAME: MONTGOMERY-WESTFIELD
 PROJECT NUMBER: STP 2906(1)

FILE NAME: pi0ci90.dgn	PLOT DATE: 9/5/12
PROJECT LEADER: CDL	DRAWN BY: R. BULLOCK
DESIGNED BY: SJL	CHECKED BY: CDL
PLOT FILE: pi0ci90_5.1	SHEET 5 OF 178