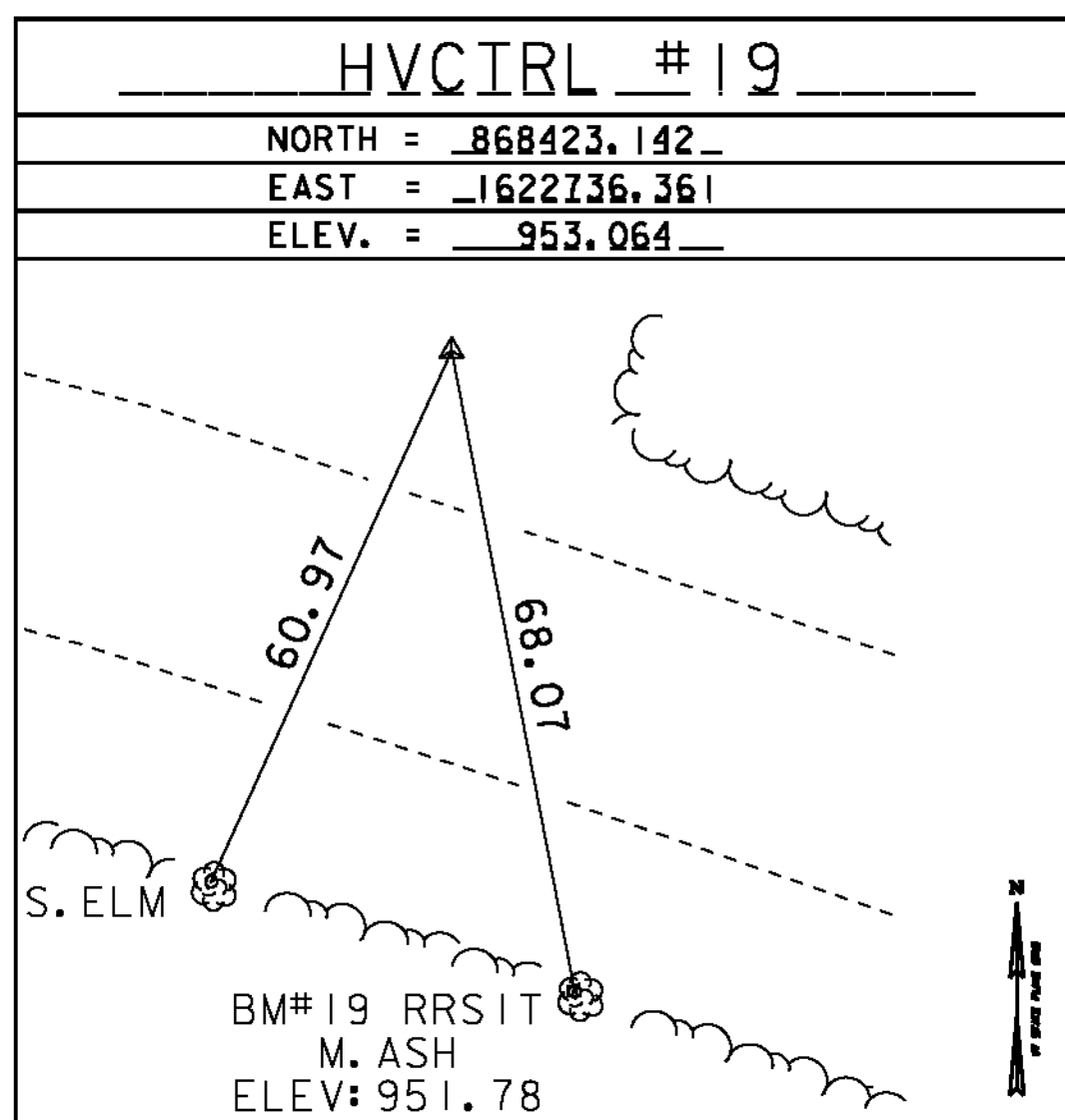
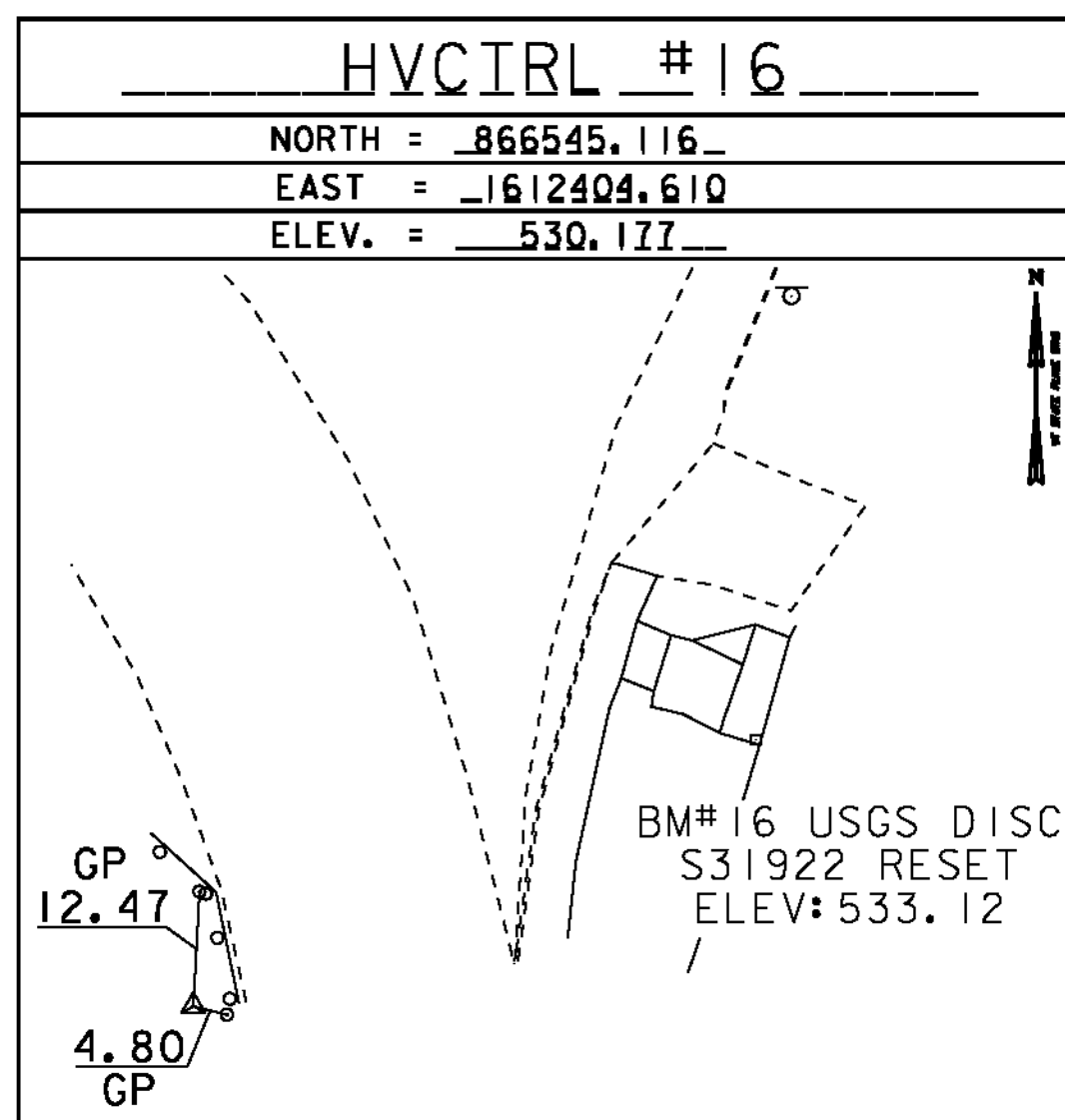
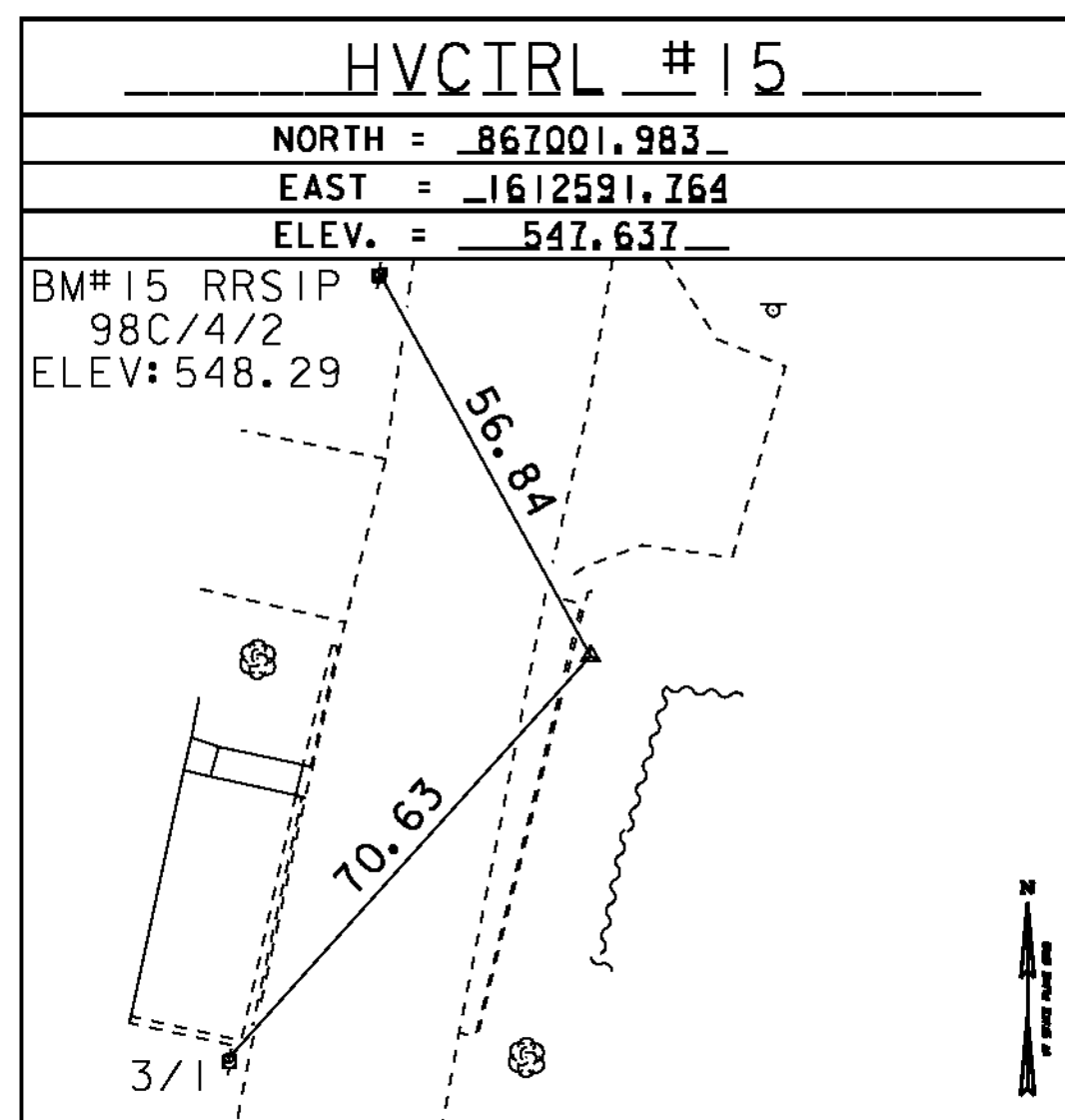
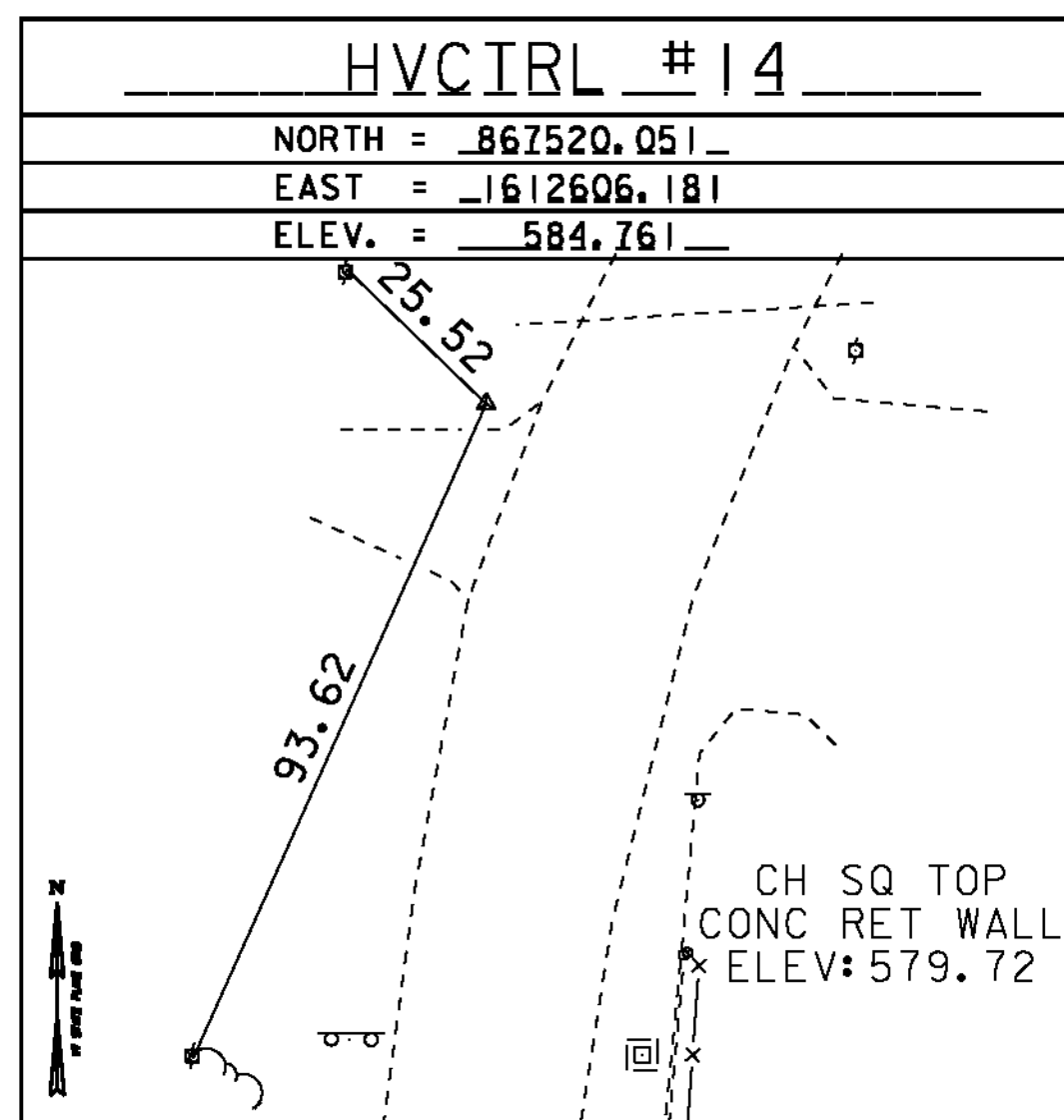
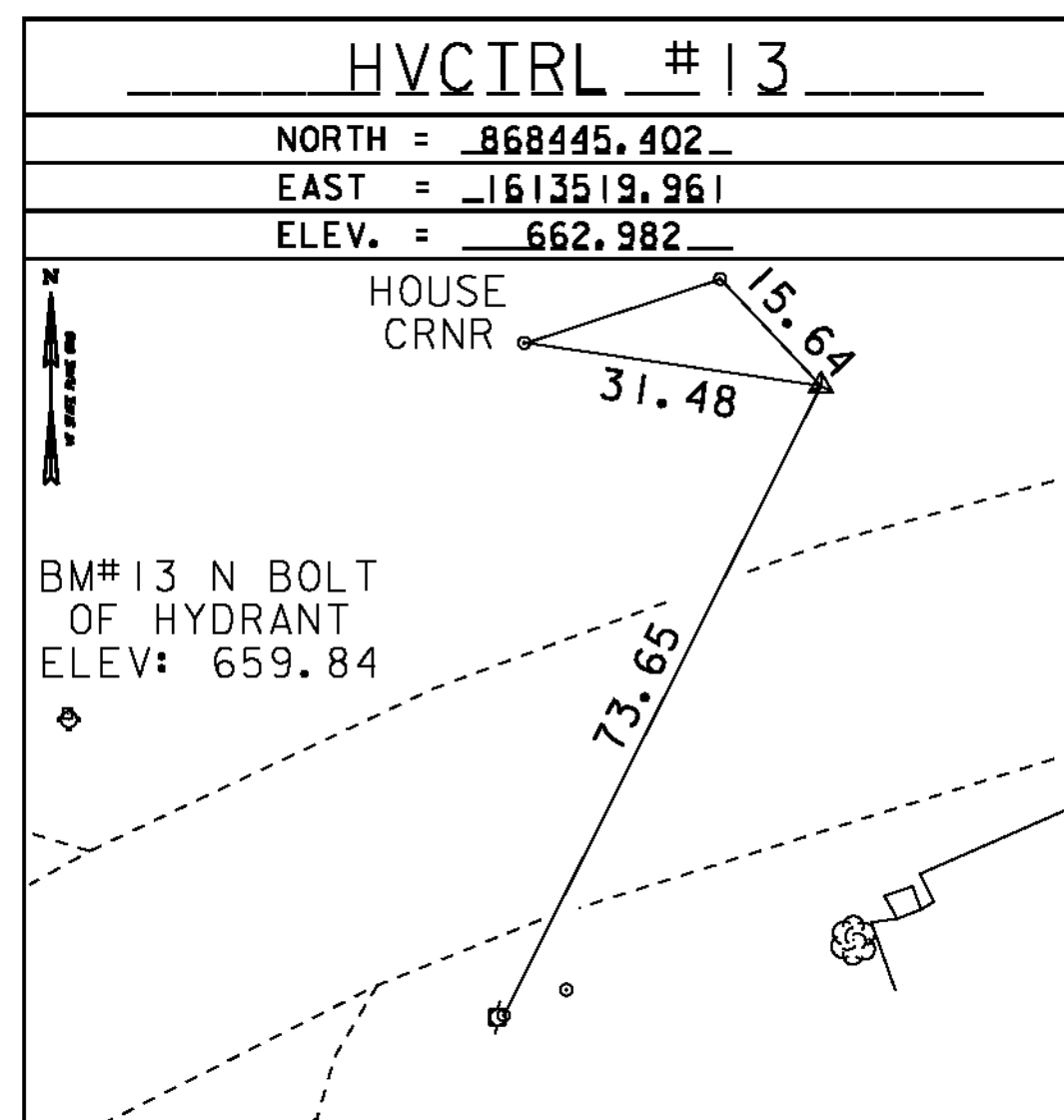


TRAVERSE TIES



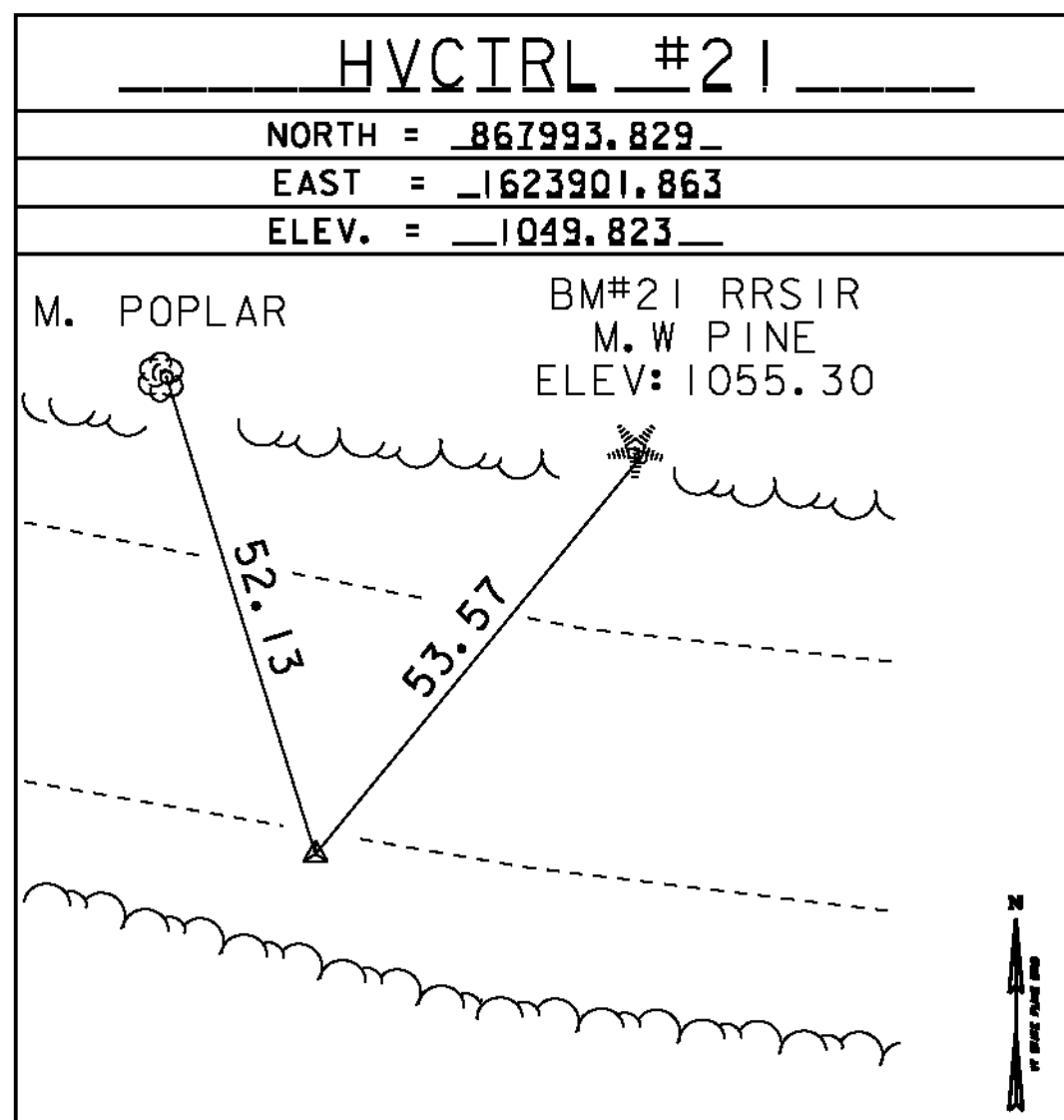
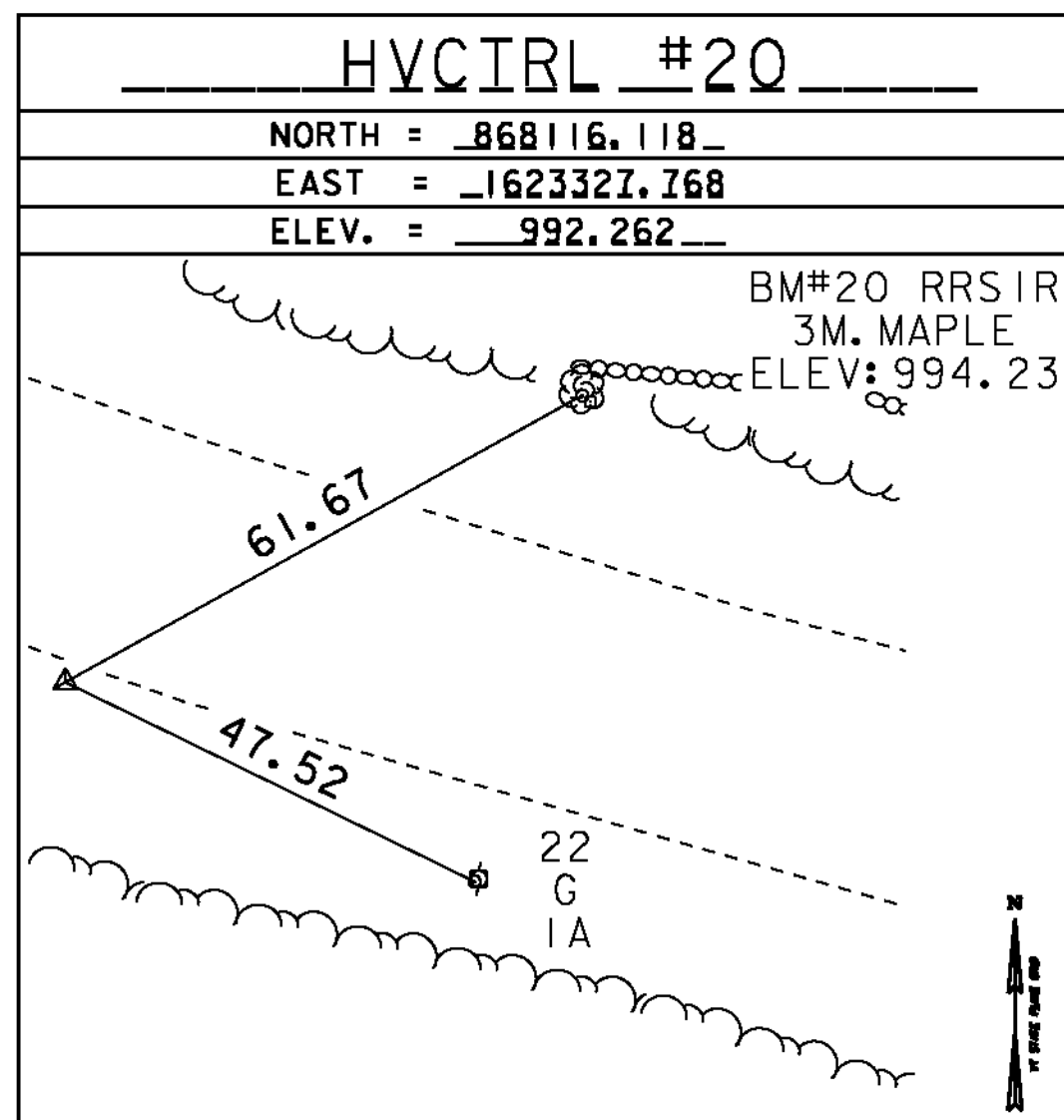
GPS CONTROL POINTS

**HVCIRL #18**  
 BEGNOCHE

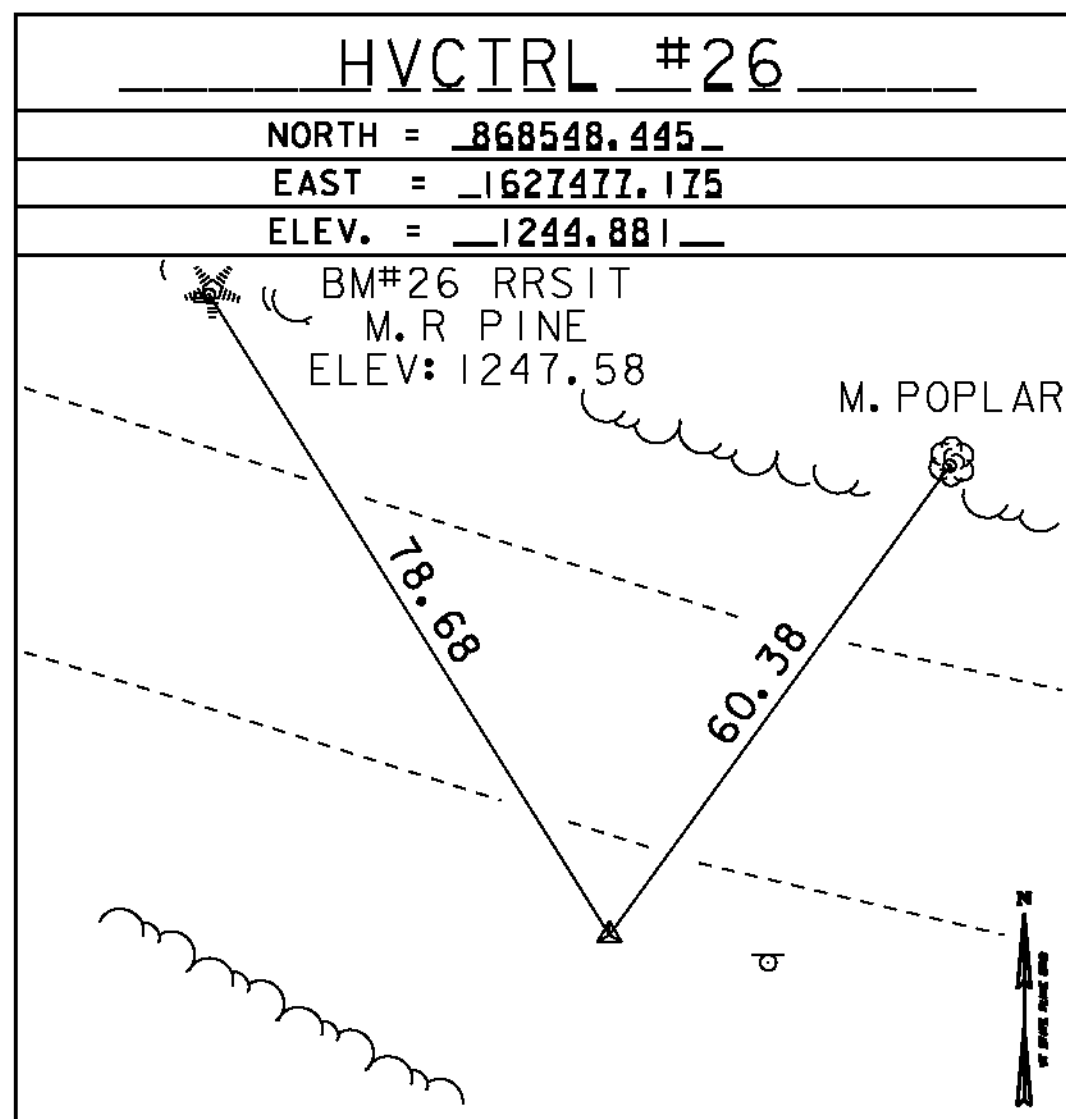
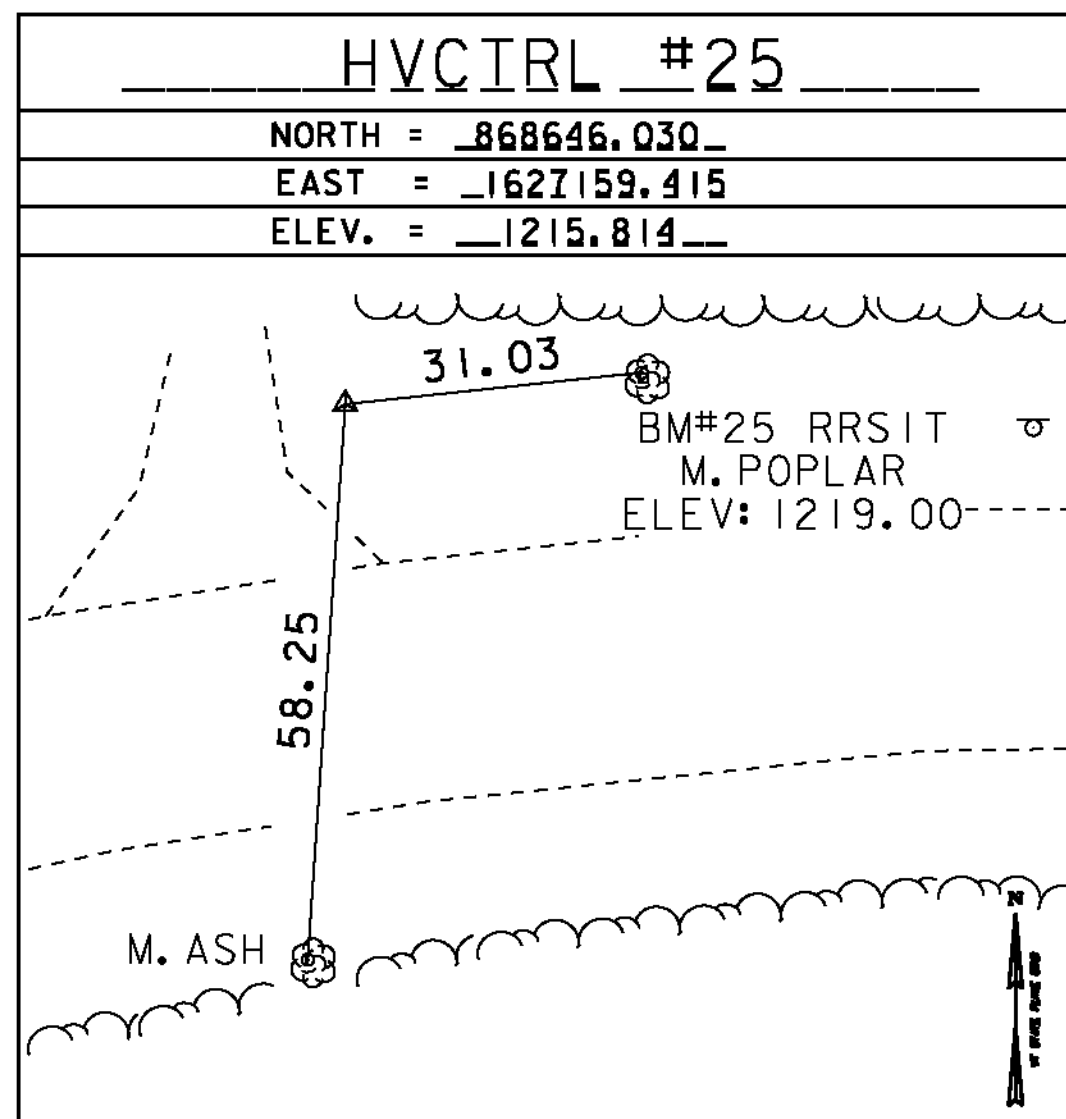
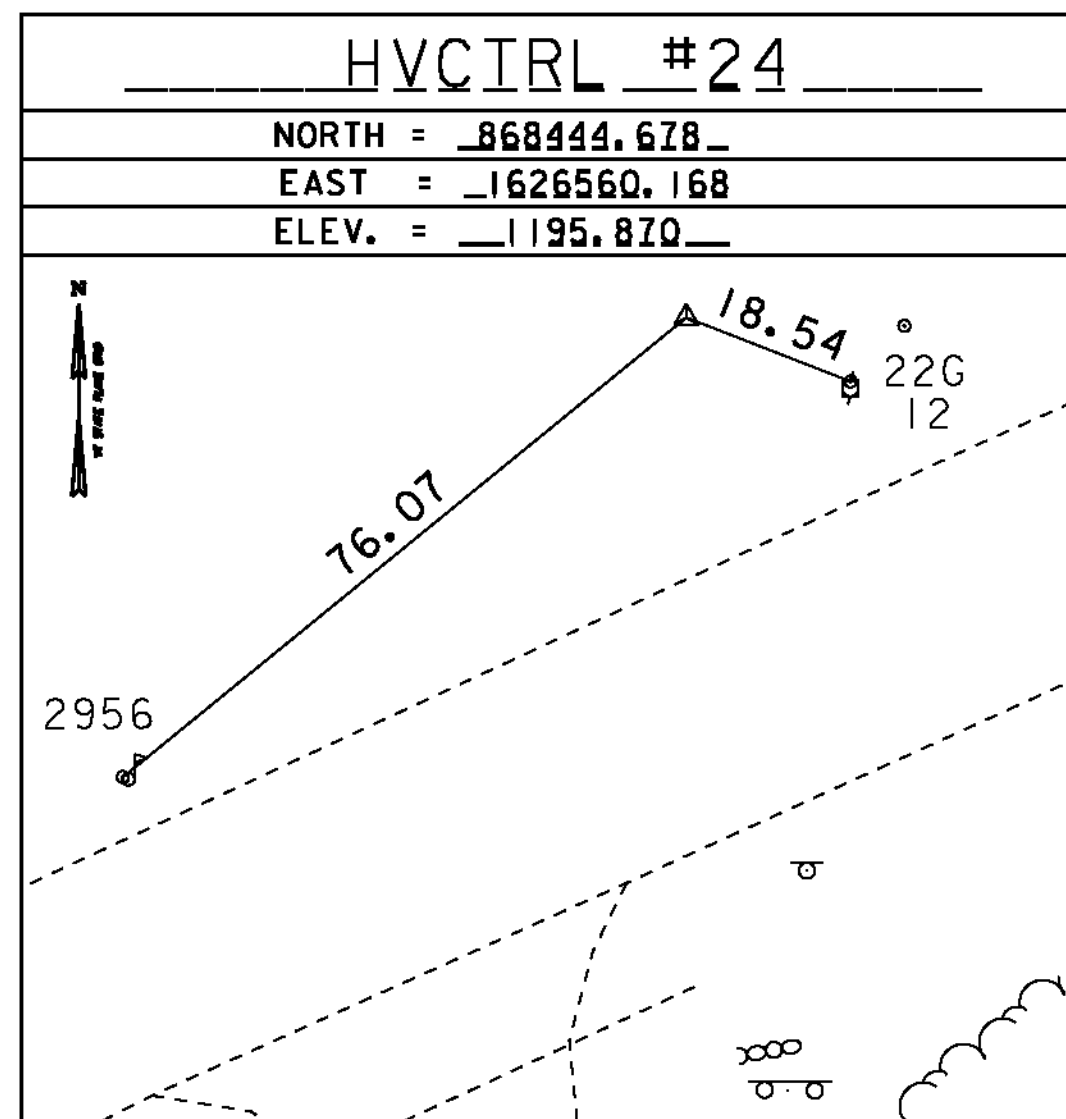
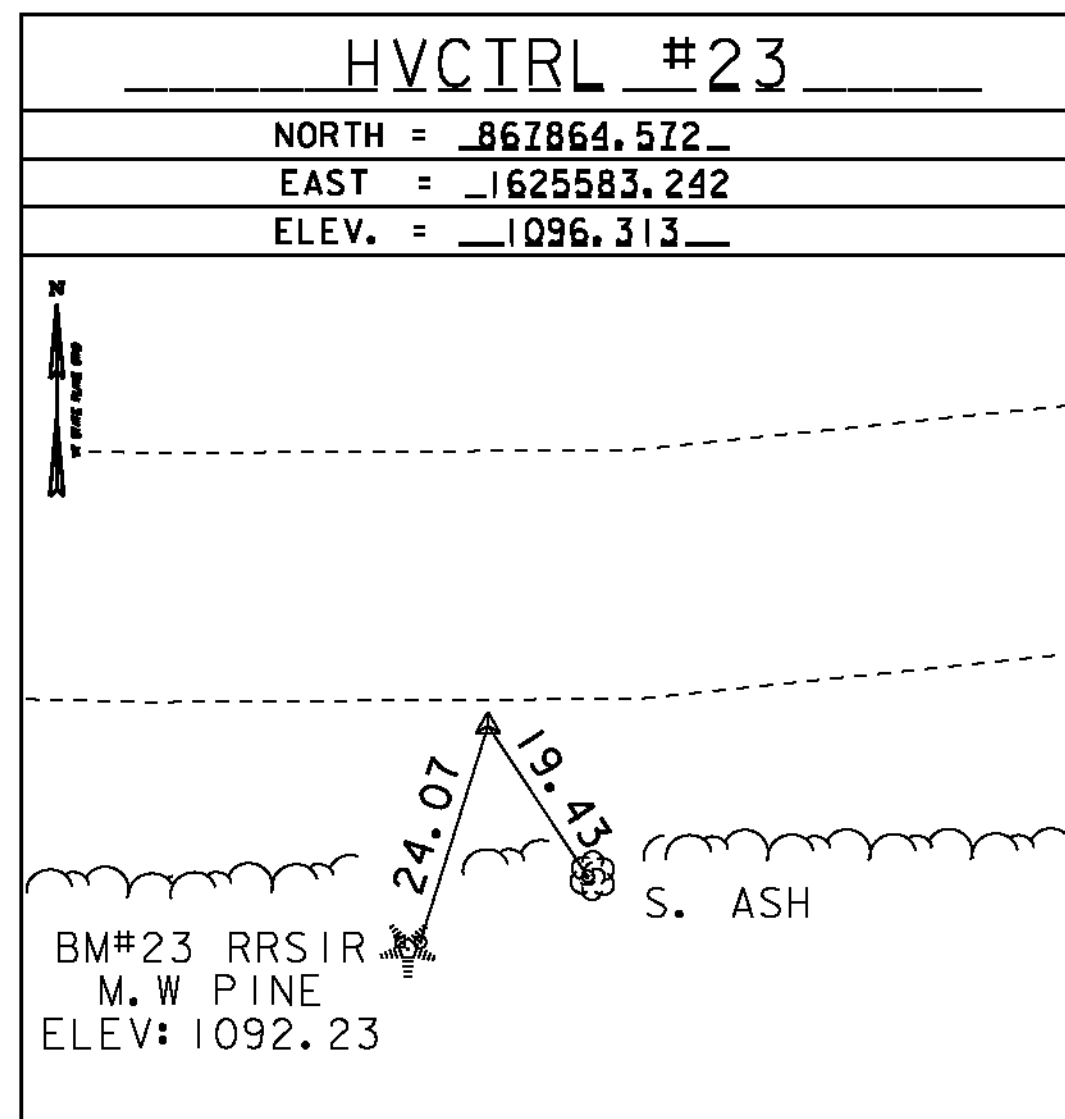
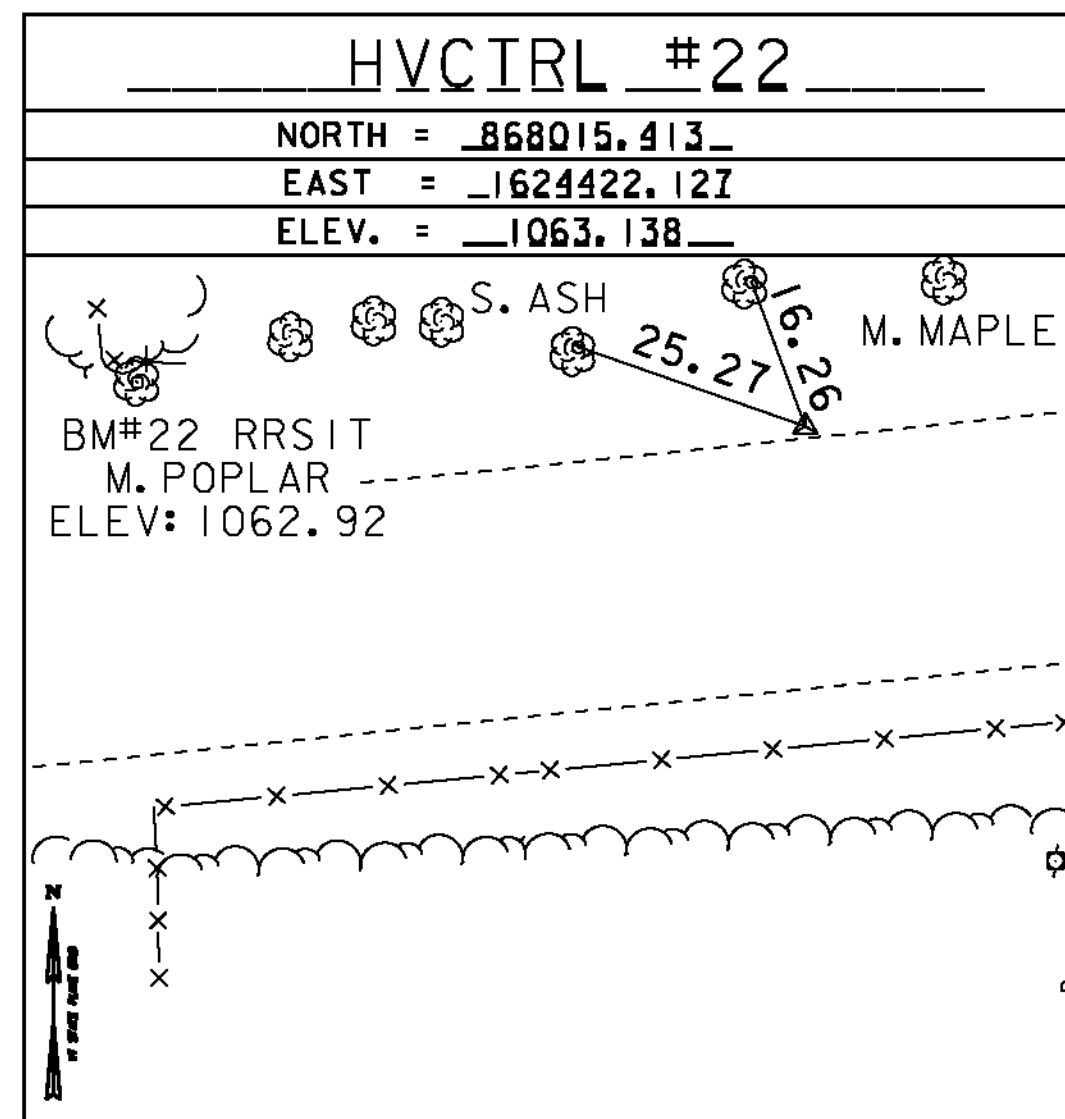
NORTH = 864679.212  
 EAST = 1612402.632  
 ELEV. = 571.534

GENERAL LOCATION, MONTGOMERY, VT. OWNERSHIP, GASTON BEGNOCHE, BOX 403 MONTGOMERY CENTER, VT 05471.  
 TO REACH FROM THE INTERSECTION OF VT ROUTE 118 AND VT ROUTE 242 IN MONTGOMERY CENTER, GO SOUTH ALONG VT ROUTE 118 FOR 0.8 MI (1.3 KM) TO THE SITE OF THE MARK ON THE RIGHT, NEAR A GATE IN A BARBED WIRE FENCE. IT IS ABOUT 45 M (147.6 FT) NORTHEAST OF THE NORTHEAST END OF HOUSE NO 399. THE MARK IS SET IN THE TOP OF A 1.6 M (5.2 FT) X 1.0 M (3.3 FT) ROCK OUTCROP WHICH PROJECTS 0.7 M (2.3 FT) ABOVE GROUND SURFACE. IT IS 9.6 M (31.5 FT) SOUTHWEST OF AND ABOUT 0.4 M (1.3 FT) HIGHER THAN THE CENTERLINE OF VT ROUTE 118, 21.7 M (71.2 FT) SOUTHWEST OF THE MOST NORTHERLY OF TWO WOODEN POSTS FOR A WELCOME TO MONTGOMERY SIGN, 19.9 M (65.3 FT) NORTH OF A CLUMP OF BIRCH GROWING IN A ROCK PILE, 21.1 M (69.2 FT) NORTHEAST OF THE CORNER POST AT THE WEST CORNER OF THE FIELD AND 1.9 M (6.2 FT) EAST-SOUTHEAST OF THE NORTHEAST GATE POST AND A FIBERGLASS WITNESS POST.

TRAVERSE TIES



TRAVERSE TIES



DATUM	
VERTICAL	<u>NAD 88</u>
HORIZONTAL	<u>NAD 83 (07)</u>
ADJUSTMENT	<u>COMPASS</u>



TIE SHEET 2

PROJECT NAME: MONTGOMERY-WESTFIELD  
 PROJECT NUMBER: STP 2906(1)

FILE NAME: pi0ci90.dgn  
 PROJECT LEADER: CDL  
 DESIGNED BY: SJL  
 PLOT FILE: pi0ci90\_4.1

PLOT DATE: 9/5/12  
 DRAWN BY: R. BULLOCK  
 CHECKED BY: CDL  
 SHEET 4 OF 178