

GPS CONTROL POINTS

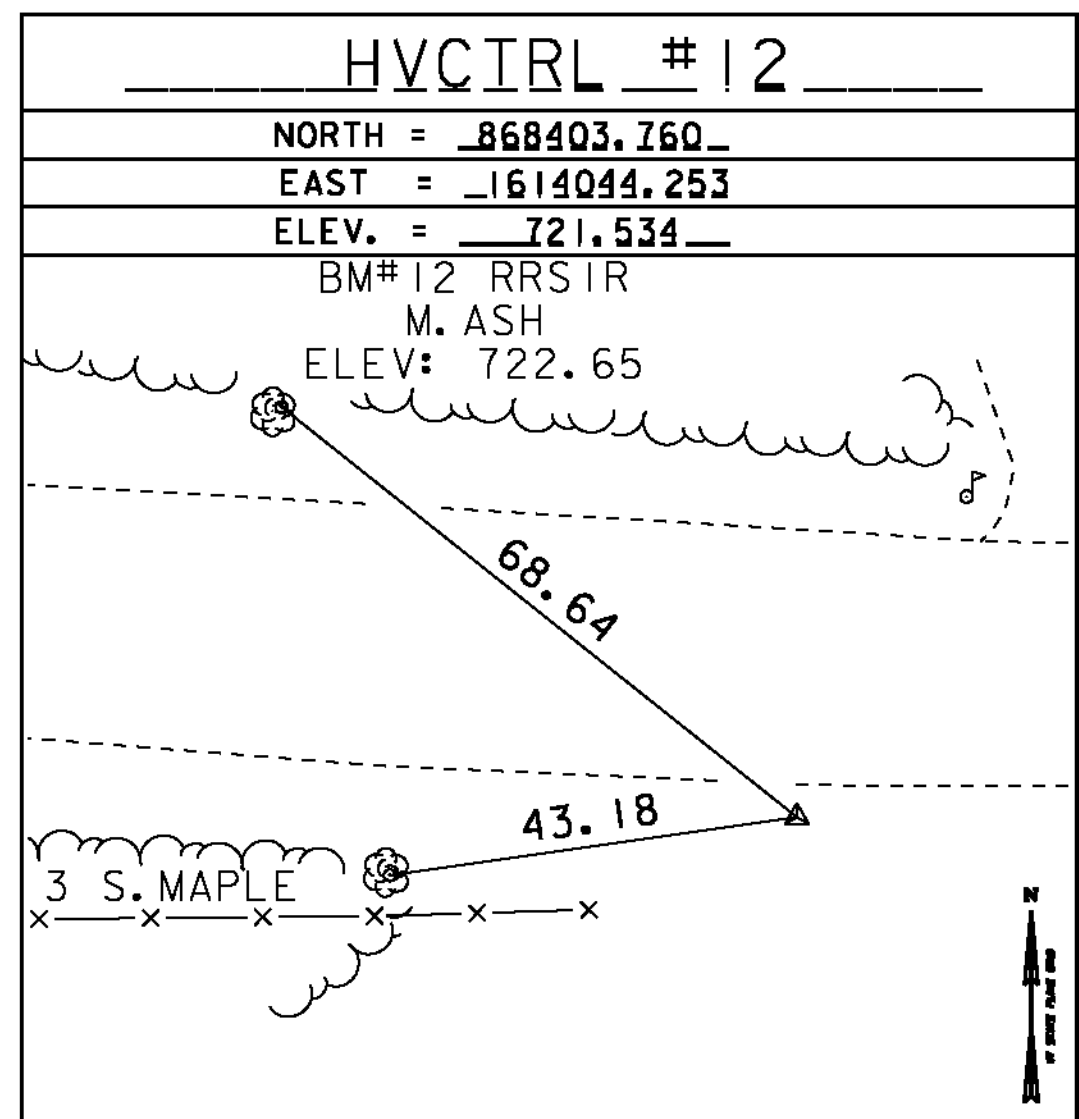
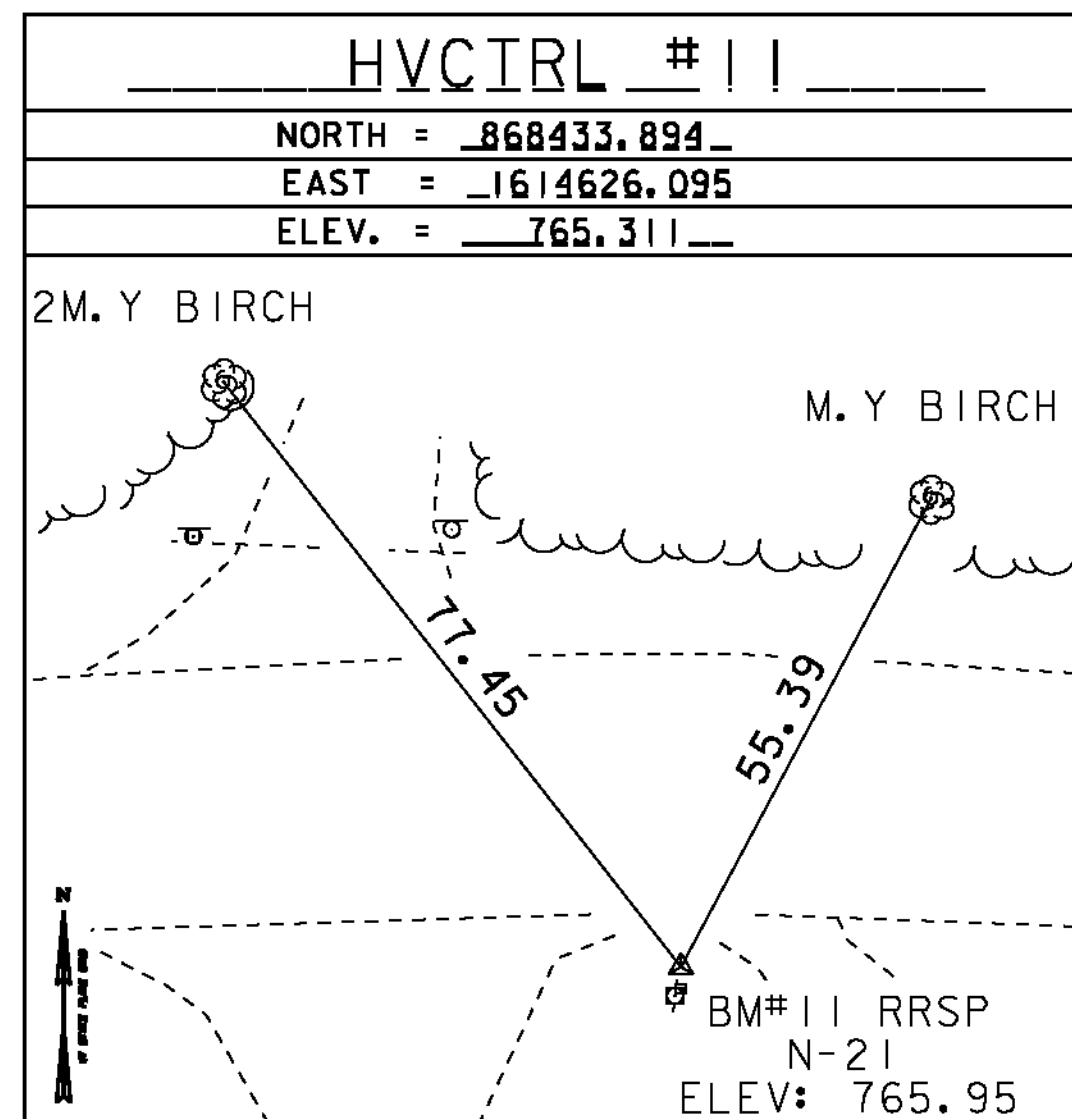
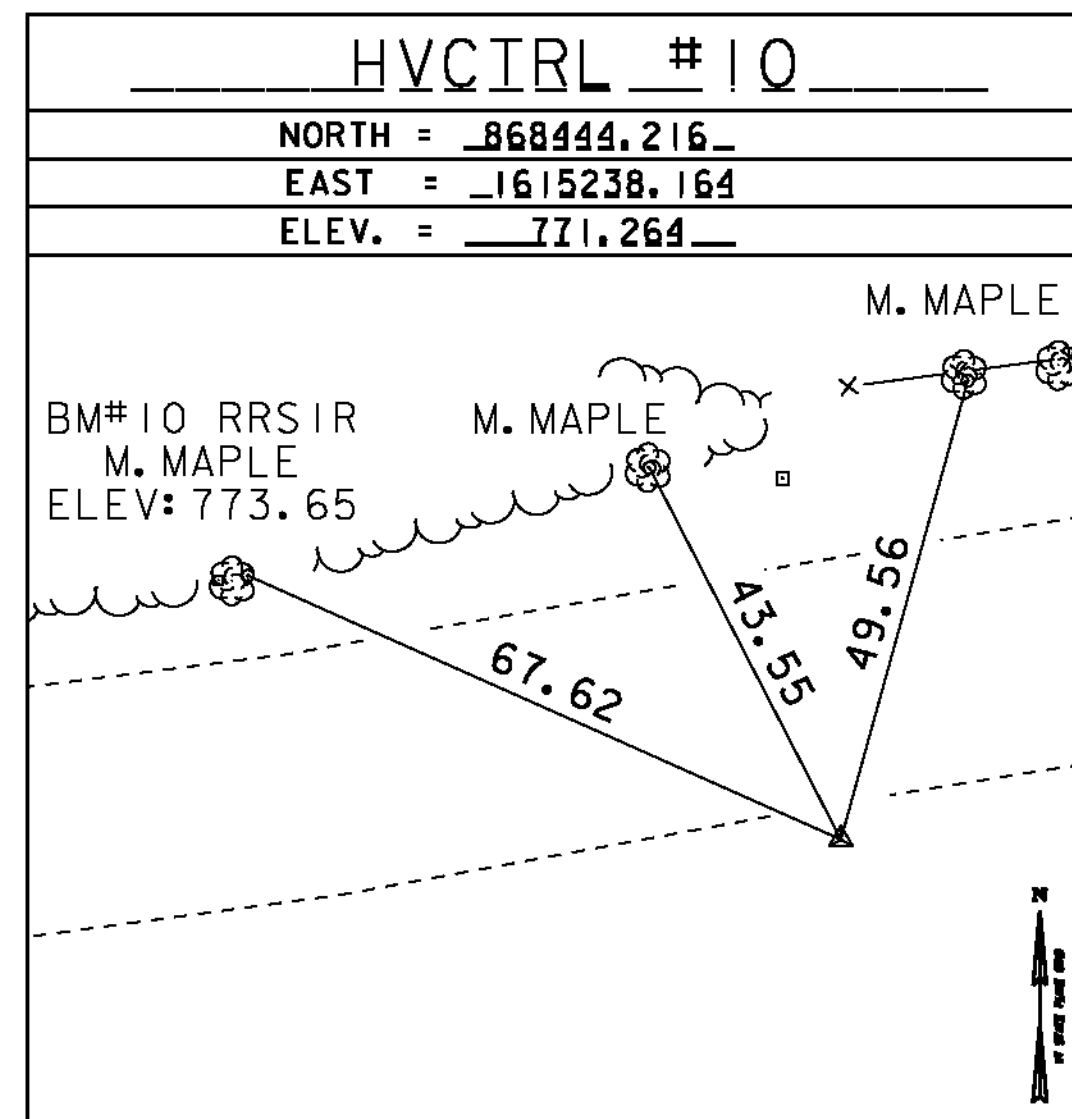
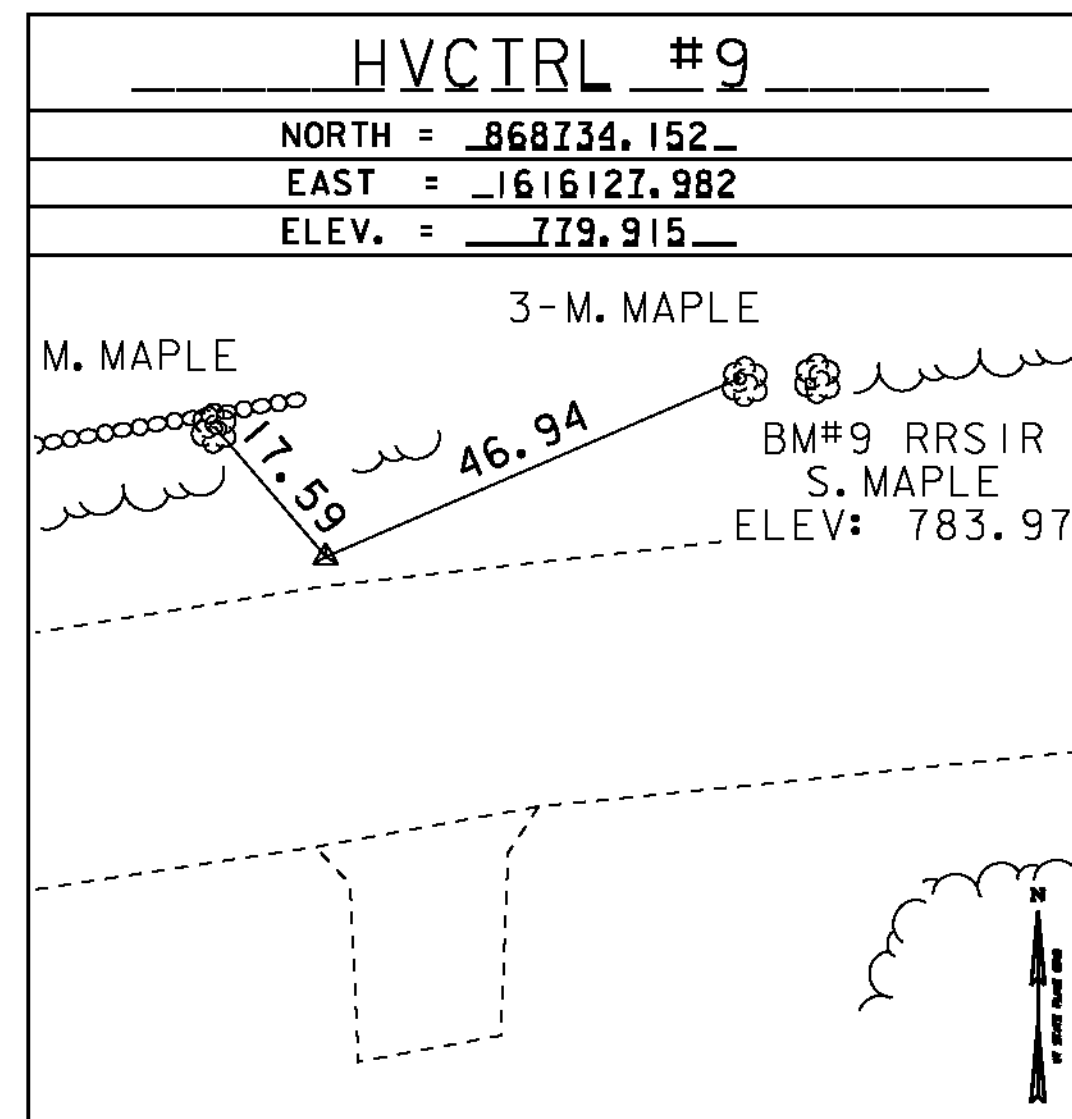
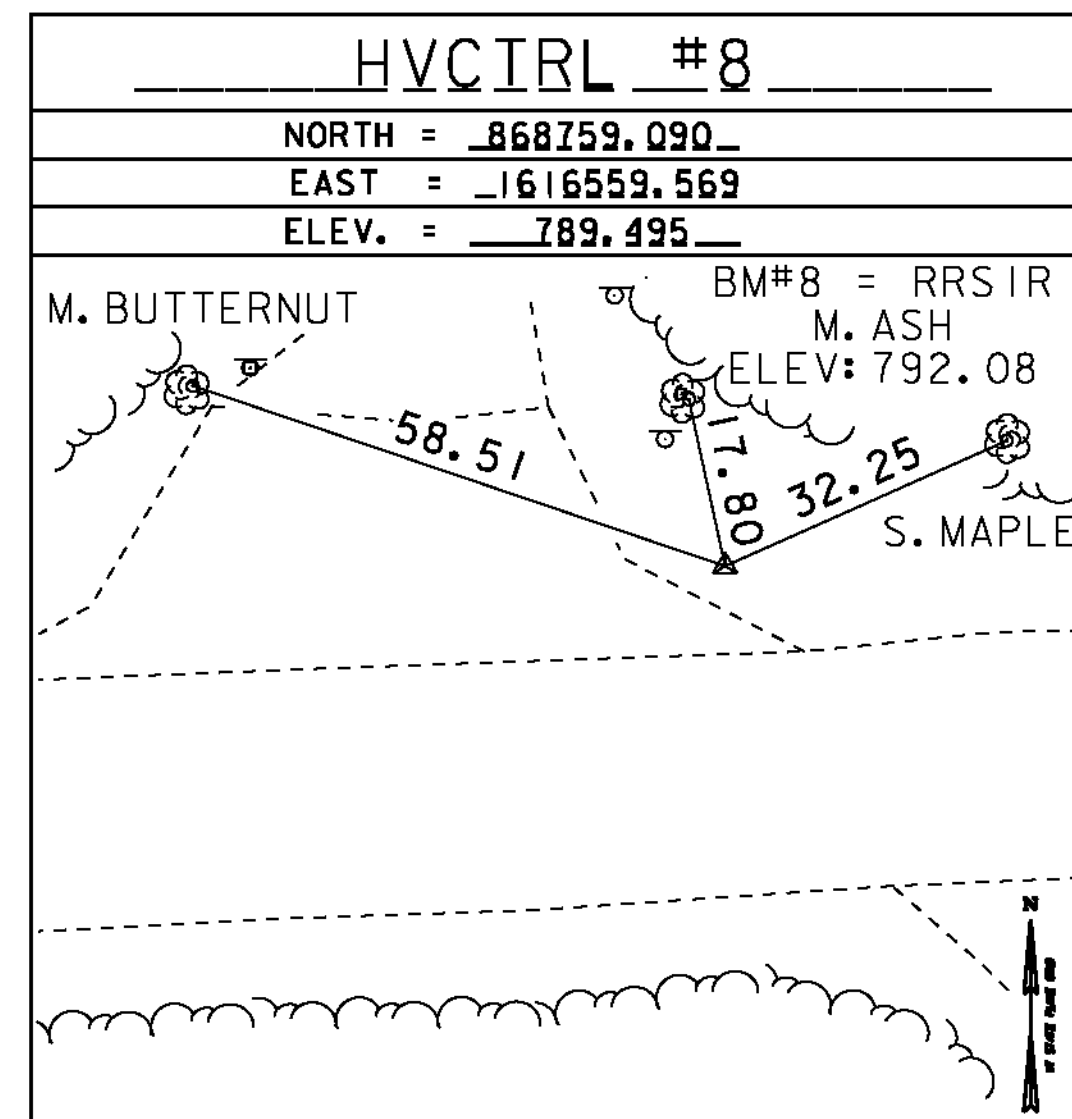
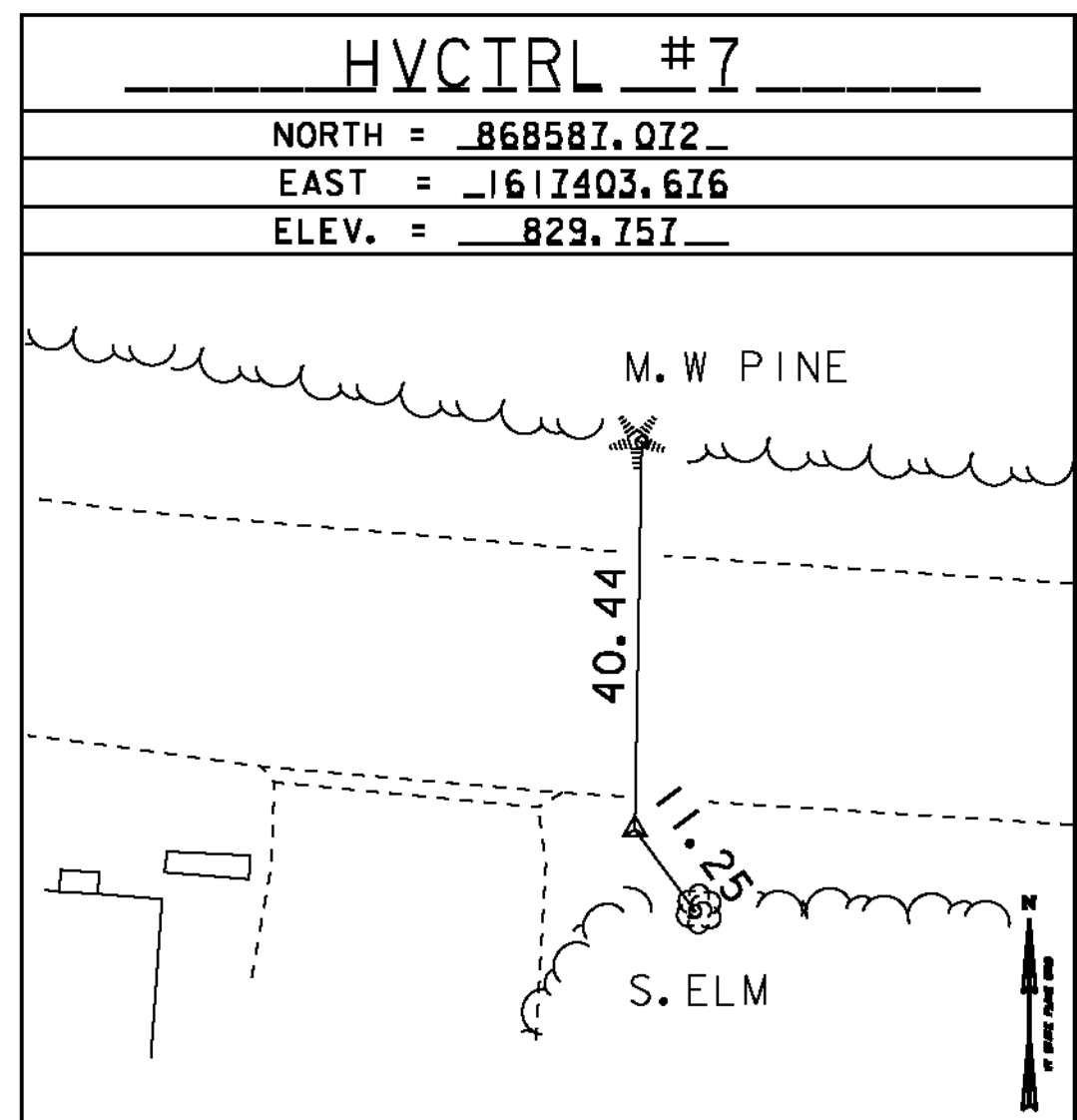
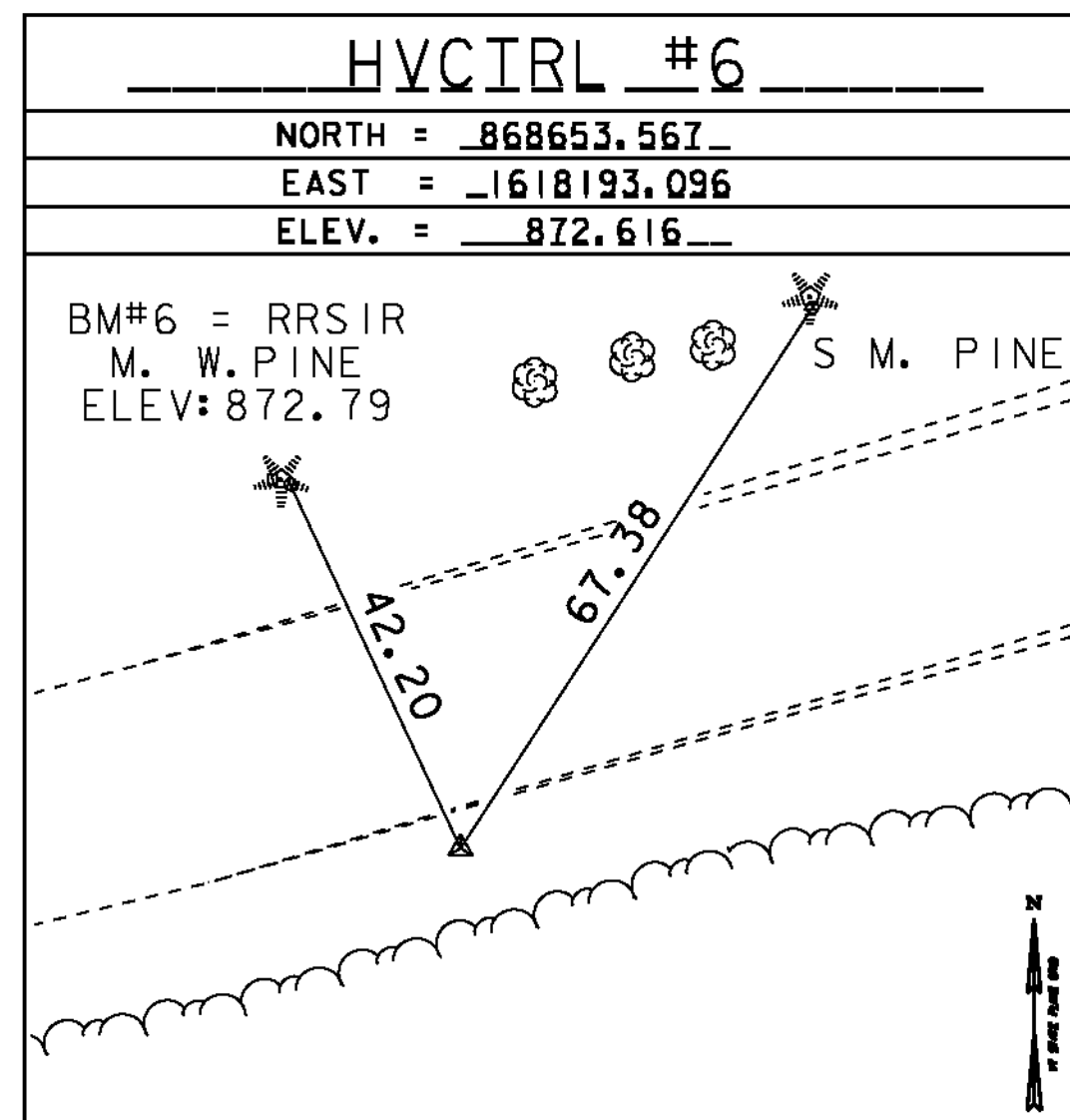
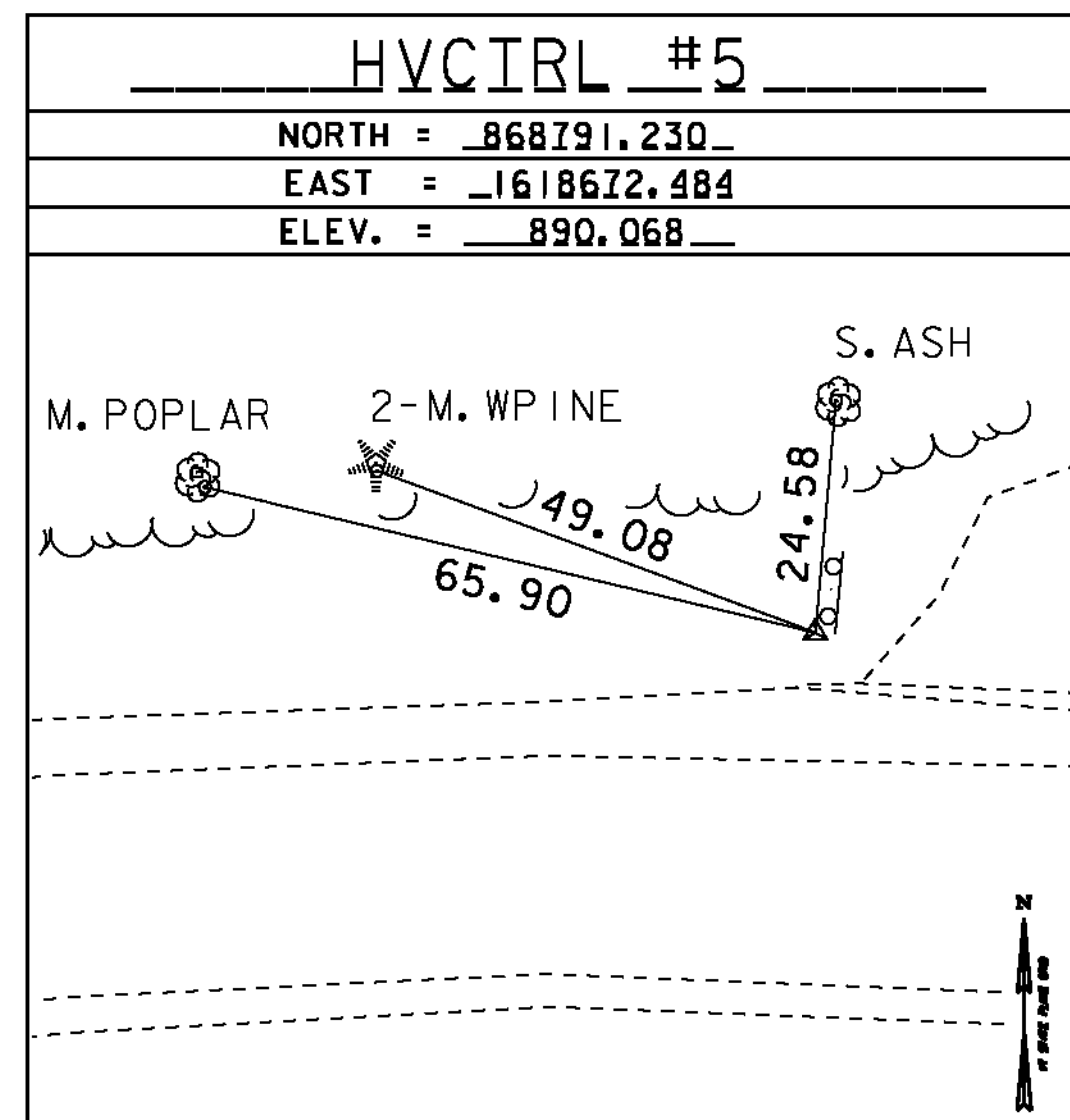
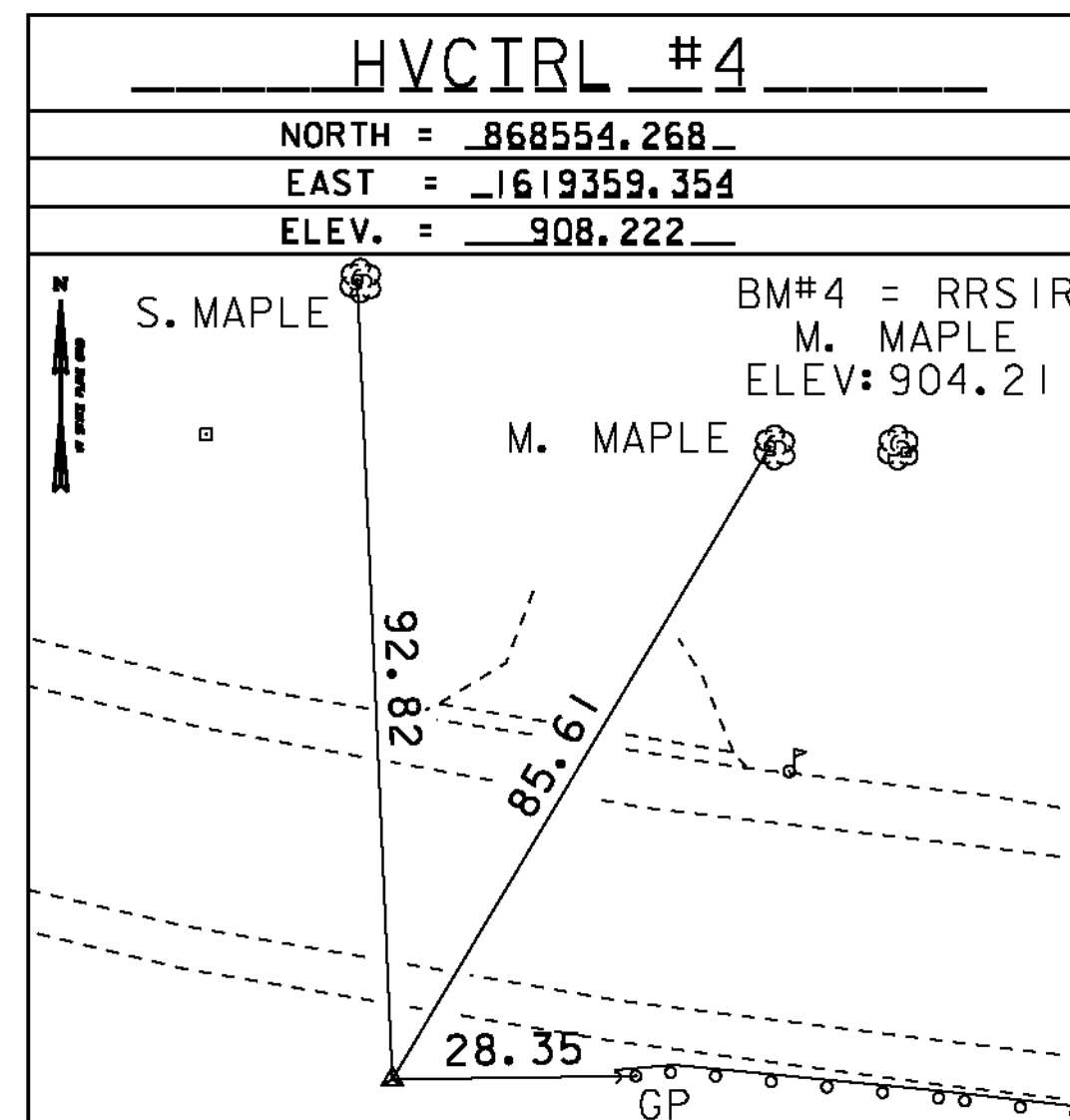
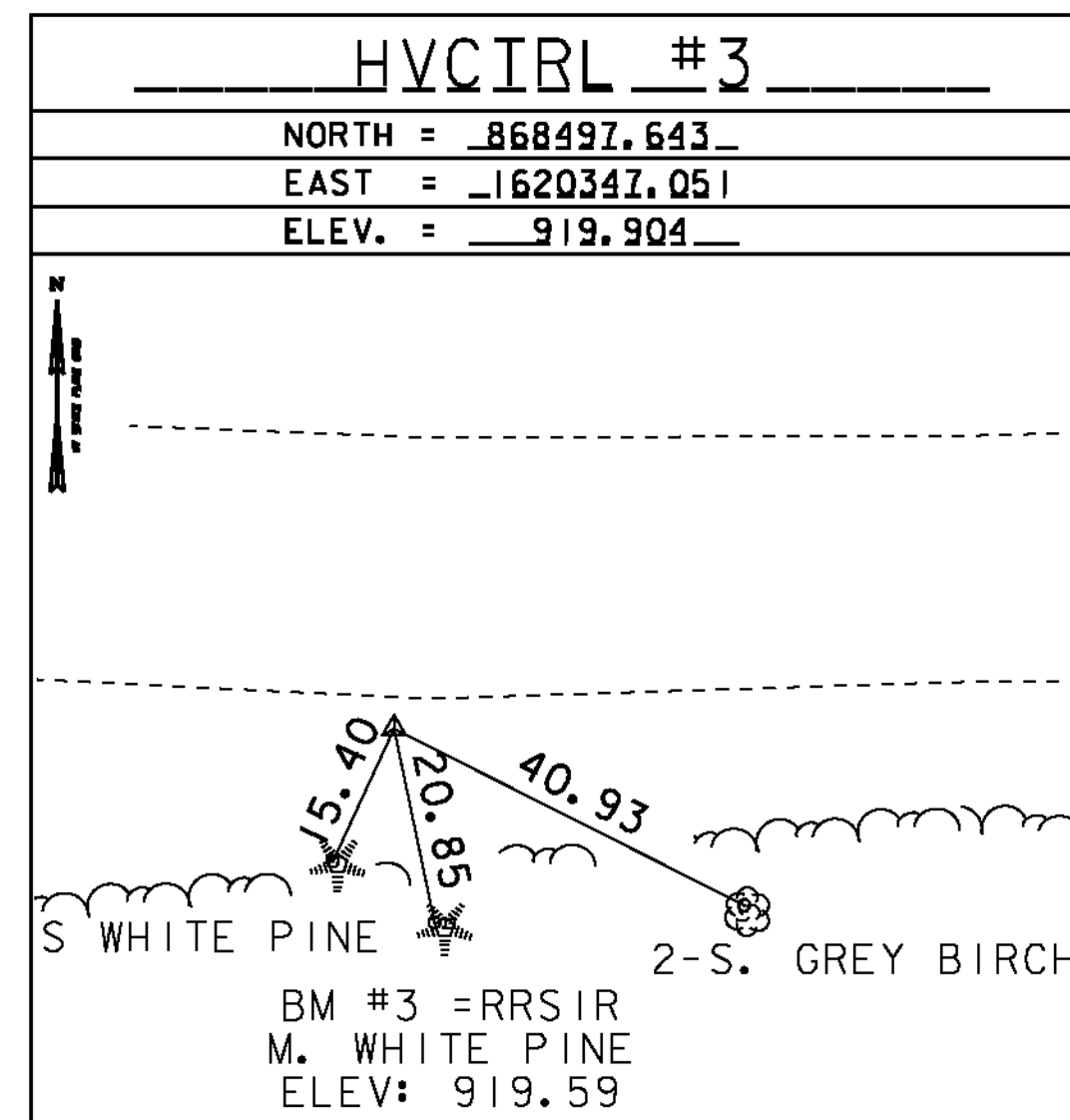
HVCIRL #1
HANNAH_CLARK_AZ_MK
NORTH = 868489.809
EAST = -1622212.849
ELEV. = 939.368

GENERAL LOCATION, MONTGOMERY, VT.
TO REACH FROM THE INTERSECTION OF VT ROUTE 118 AND VT ROUTE 242 IN MONTGOMERY CENTER, GO EAST ALONG VT ROUTE 242 FOR 2.1 MI (3.4 KM) TO THE SITE OF THE MARK ON THE LEFT. THE MARK IS SET 10 CM (4 INCHES) BELOW GROUND SURFACE IN THE TOP OF A 30 CM (12 INCH) DIAMETER CONCRETE MONUMENT. IT IS 6.3 M (20.7 FT) NORTH OF AND ABOUT 0.2 M (0.7 FT) LOWER THAN THE CENTERLINE OF VT ROUTE 242, 55.4 M (181.8 FT) WEST OF THE CENTERLINE OF THE GRAVEL DRIVE LEADING TO HOUSE NO 2145, 24.3 M (79.7 FT) EAST OF THE MAILBOX FOR HOUSE NO 2104 WHICH IS SET ABOUT OPPOSITE THE CENTERLINE OF THE GRAVEL DRIVE LEADING TO THE SAME HOUSE, 71.7 M (235.2 FT) NORTH-NORTHWEST OF AND ACROSS THE ROAD FROM POLE NO 46, 59.9 M (196.5 FT) NORTHEAST OF AND ACROSS THE ROAD FROM THE NORTH CORNER OF HOUSE NO 2104 AND 0.3 M (1.0 FT) SOUTH OF A FIBERGLASS WITNESS POST.

HVCIRL #2
HANNAH_CLARK
NORTH = 868576.037
EAST = -1620818.998
ELEV. = 927.421

GENERAL LOCATION MONTGOMERY, VT.
THE MARK IS SET 10 CM BELOW GROUND SURFACE IN THE TOP OF A 30 CM DIAMETER CONCRETE MONUMENT. IT IS ABOUT 1.8 MI EAST OF MONTGOMERY AND JUST WEST OF HANNAH CLARK BROOK ROAD. IT IS 13.4 M NORTH OF THE CENTERLINE OF VT ROUTE 242, 6.0 M WEST OF THE CENTERLINE OF HANNAH CLARK BROOK ROAD, 6.3 M NORTH OF POLE NO 22/92A, AND 53.9 M SOUTH-SOUTHWEST OF THE SOUTHWEST (OUTLET) END OF THE LARGE DIAMETER STEEL CULVERT BRIDGE SPANNING HANNAH CLARK BROOK.

TRAVERSE TIES



TRAVERSE TIES

DATUM
VERTICAL NAD 88
HORIZONTAL NAD 83 (07)
ADJUSTMENT COMPASS



TIE SHEET 1

PROJECT NAME: MONTGOMERY-WESTFIELD
PROJECT NUMBER: STP 2906(1)

FILE NAME: pi0ci90.dgn
PROJECT LEADER: CDL
DESIGNED BY: SJL
PLOT FILE: pi0ci90_3.1

PLOT DATE: 9/5/12
DRAWN BY: R. BULLOCK
CHECKED BY: CDL
SHEET 3 OF 178