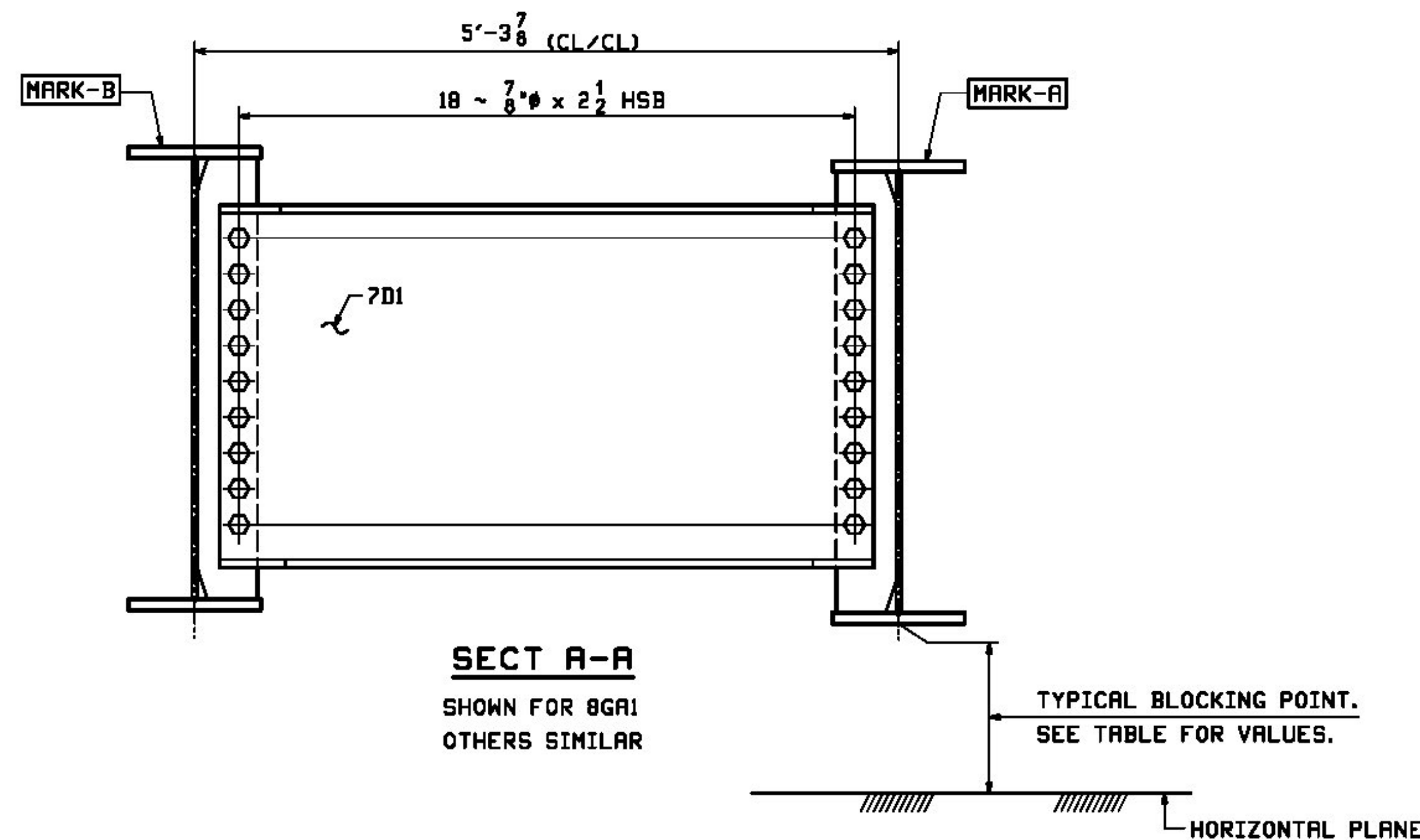


**GIRDER ASSEMBLY PLAN**

SHIP MARK	MARK-A	MARK-B	BLOCK-1	BLOCK-2	BLOCK-3	BLOCK-4	BLOCK-5	BLOCK-6
BGA1	1G1	2G2	11 1/2	1'-5 7/16	11 1/16	1'-0 11/16	1'-6 1/2	1'-0 1/4
BGA2	3G3	2G4	1'-1 7/16	1'-7 1/4	1'-1 1/16	1'-2 11/16	1'-8 1/2	1'-2 1/4
BGA3	4G5	5G6	1'-2 5/8	1'-8 7/16	1'-2 1/4	1'-1 7/16	1'-7 1/4	1'-1 1/16
BGA4	4G7	6G8	1'-0 5/8	1'-6 7/16	1'-0 1/4	11 7/16	1'-5 3/8	11 1/16



**SECT A-A**  
SHOWN FOR BGA1  
OTHERS SIMILAR

TYPICAL BLOCKING POINT.  
SEE TABLE FOR VALUES.

Vermont Agency of Transportation

**RECEIVED**

ON: **January 29, 2014**

and Checked for

**CONFORMANCE**

BY: **Rob Young** DATE: **02/18/2014**

Reviewed  Furnish As Corrected  
 Rejected  Revise and Resubmit

This review is only for general conformance with the design concept and the information given in the Construction Documents. Corrections or comments made on the shop drawings during the review do not relieve the Contractor from compliance with the requirements of the Plans and Specifications. Review of a specific item shall not include review of an assembly of which an item is a component. The Contractor is responsible for dimensions to be confirmed and corrected at the job site, information that pertains solely to the fabrication process or to the means, methods, techniques, sequences and procedures of construction; coordination of the Work with that of other trades and performing all Work in a safe and satisfactory manner.

**McFarland Johnson**

Date February 12, 2014

By D. Kull

JOB NO.		DRAWING NO.		REV.		
548		8				
SHIP	MARK	QTY	MATERIAL	REMARKS	WT	PROCUREMENT NOTES
BGA1	1	1	GIRDER ASSEMBLY		34824	
		1	1G1 GIRDER		5812	
		1	2G2 GIRDER		5812	
		5	7D1 INT. DIAPHRAGM		584	
3	C	90	1/2" HSB	0 2 1/2	A325-3	.80
3	G	90	1/2" HSB		F438M	.07
BGA2	1	1	GIRDER ASSEMBLY		34823	
		1	3G3 GIRDER		5812	
		1	2G4 GIRDER		5812	
		5	7D1 INT. DIAPHRAGM		584	
3	C	90	1/2" HSB	0 2 1/2	A325-3	.80
3	G	90	1/2" HSB		F438M	.07
BGA3	1	1	GIRDER ASSEMBLY		34823	
		1	4G5 GIRDER		5812	
		1	5G6 GIRDER		5812	
		5	7D1 INT. DIAPHRAGM		584	
3	C	90	1/2" HSB	0 2 1/2	A325-3	.80
3	G	90	1/2" HSB		F438M	.07
BGA4	1	1	GIRDER ASSEMBLY		34824	
		1	4G7 GIRDER		5812	
		1	6G8 GIRDER		5812	
		5	7D1 INT. DIAPHRAGM		584	
3	C	90	1/2" HSB	0 2 1/2	A325-3	.80
3	G	90	1/2" HSB		F438M	.07

NOTES:  
FOR GENERAL NOTES SEE GNI

REV.	DATE	REMARKS	DMN	CHK	APVL	SHOP
0						
MATERIAL:		SURFACE PREP. & PAINT:		HOLES:		SHOP BOLTS:
DESCRIPTION: GIRDER ASSEMBLIES						
CASCO BAY STEEL STRUCTURES, INC.						
1 WALLACE AVE.			PHONE (207) 780-6722		TENSOR 3223	
SOUTH PORTLAND, ME 04106			FAX. (207) 780-6726			
STRUCTURE: VT ROUTE 100 (MINOR ARTERIAL) OVER MAD RIVER BRIDGE NO. 166 WARREN COUNTY OF WASHINGTON				DRAWN: CRK	DATE: 01/24	
				CHKD: DO	DATE: 01/24	
LOCATION: TOWN OF WARREN				JOB NO.	DWG NO.	
PROJ NO. BRP 013-4(32)				548	8	
CUSTOMER: VT AOT					REV. <input type="checkbox"/>	