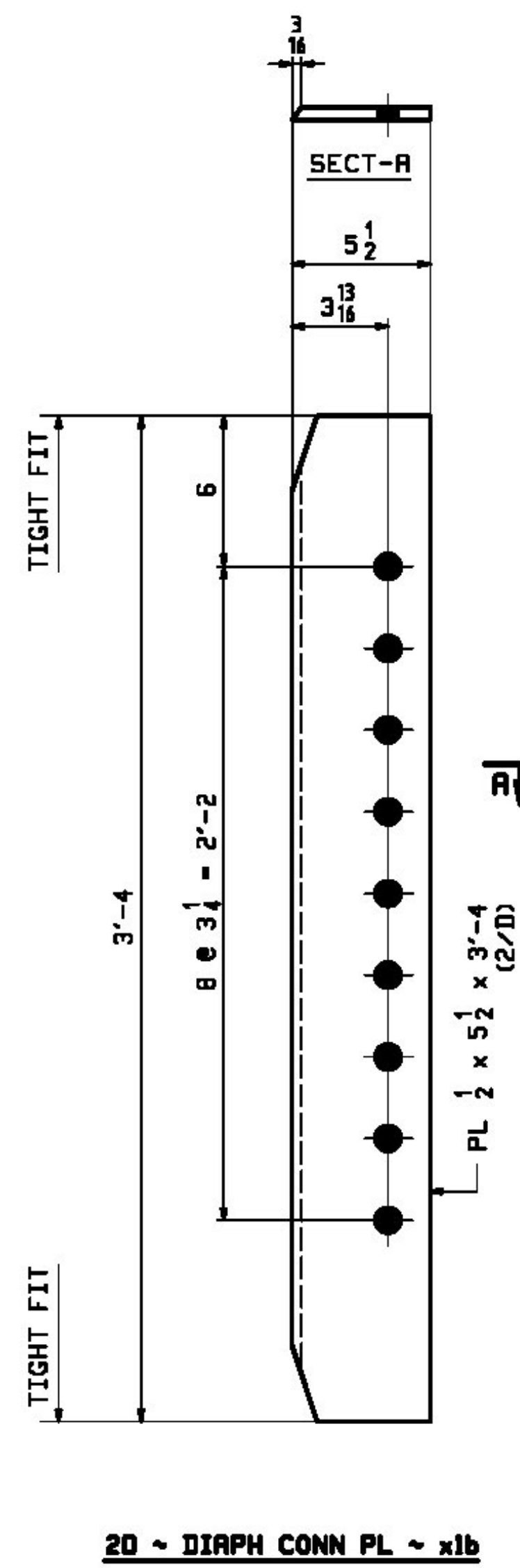
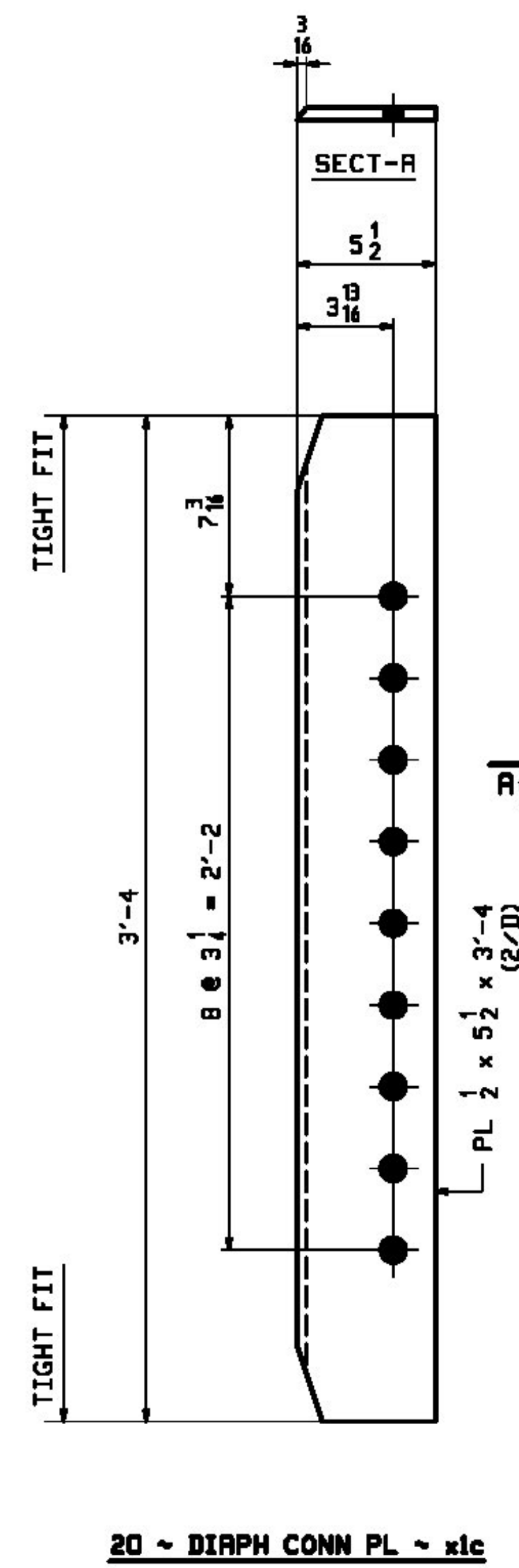


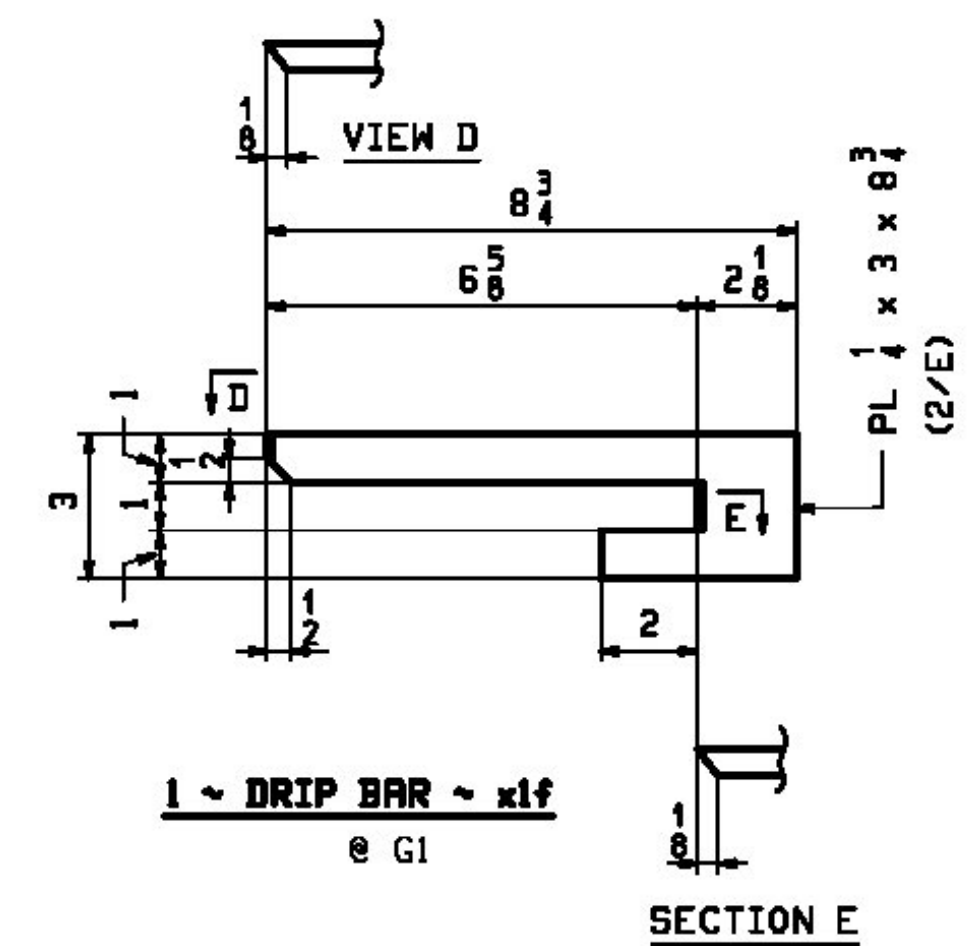
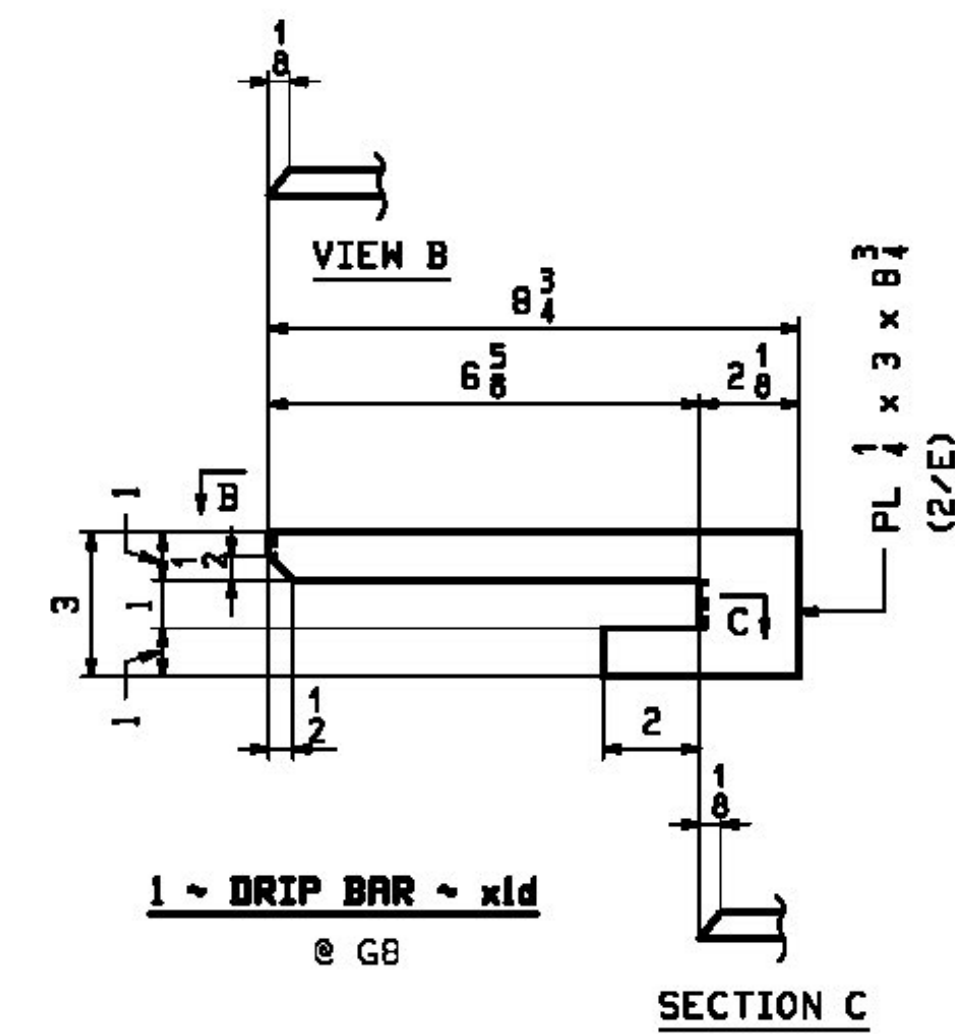
32 ~ BEARING STIFF ~ x1a



20 ~ DIAPH CONN PL ~ x1b
LOW SIDE



20 ~ DIAPH CONN PL ~ x1c
HIGH SIDE



Vermont Agency of Transportation

RECEIVED

ON: January 29, 2014

and Checked for

CONFORMANCE

BY: Rob Young DATE: 02/18/2014

Reviewed
 Rejected

 Furnish As Corrected
 Revise and Resubmit

This review is only for general conformance with the design concept and the information given in the Construction Documents. Corrections or comments made on the shop drawings during the review do not relieve the Contractor from compliance with the requirements of the Plans and Specifications. Review of a specific item shall not include review of an assembly of which an item is a component. The Contractor is responsible for dimensions to be confirmed or corrected at the job site; information that pertains solely to the fabrication process or to the means, methods, techniques, sequences and procedures of construction, coordination of the Work with that of other trades and performing all Work in a safe and satisfactory manner.

Date: February 12, 2014
 By: D. Kull

McFarland Johnson

NOTES:
1. FOR GENERAL NOTES SEE DRAWING GNI.

REV.	DATE	REMARKS	DMN	CHK	APVL	SHOP
0						
MATERIAL:		SURFACE PREP. & PAINT:		HOLES:		SHOP BOLTS:
M270-SDW		SEE GNI		15/16" Ø		NONE
DESCRIPTION: GIRDER STANDARDS						
CASCO BAY STEEL STRUCTURES, INC.						
1 WALLACE AVE.			PHONE (207) 780-6722			
SOUTH PORTLAND, ME 04106			FAX. (207) 780-6726			
STRUCTURE: VT ROUTE 100 (MINOR ARTERIAL) OVER MAD RIVER BRIDGE NO. 166 WARREN COUNTY OF WASHINGTON				DRAWN:	DATE:	
				CRK	01/22	
				CHKD:	DATE:	
				DO	01/24	
LOCATION: TOWN OF WARREN				JOB NO.		DWG NO.
PROJ NO. BRF 013-4(32)						548
CUSTOMER: VT AOT						X1 REV.