

VERMONT Agency of Transportation
RECEIVED
 ON: June 12, 2014
 and Checked for
CONFORMANCE
 BY: Rob Young DATE: 6/17/2014

Approved As Noted
 Rejected

This review is only for general conformance with the design concept and the information given in the Construction Documents. Corrections or comments made on the shop drawings during the review do not relieve the Contractor from compliance with the requirements of the Plans and Specifications. Review of a specific item shall not include review of an assembly of which an item is a component. The Contractor is responsible for dimensions to be confirmed or corrected at the job site; information that pertains solely to the fabrication process or to the means, methods, techniques, sequences and procedures of construction; coordination of the Work with that of other trades and performing all Work in a safe and satisfactory manner.

Date: 6/13/2014
 By: D. Kull

LEGEND:
 CONT.-CONTINUOUS
 TRANS.-TRANSVERSE
 DWLS.-DOWELS
 VERTS.-VERTICAL
 HORIZ.-HORIZONTAL
 T&B -TOP & BOTTOM
 I.F.-INNER FACE
 E.E.-EACH END
 D.F.-OUTER FACE
 E.E.-EACH END
 E.F.-EACH FACE
 F.F.-FRONT FACE
 R.F.-REAR FACE
 E.W.-EACH WAY
 O.C.-ON CENTER
 L.W.-LONG WAY
 S.W.-SHORT WAY

FOR FIELD USE

ALL DUAL COATED REINF. DENOTED (Z)

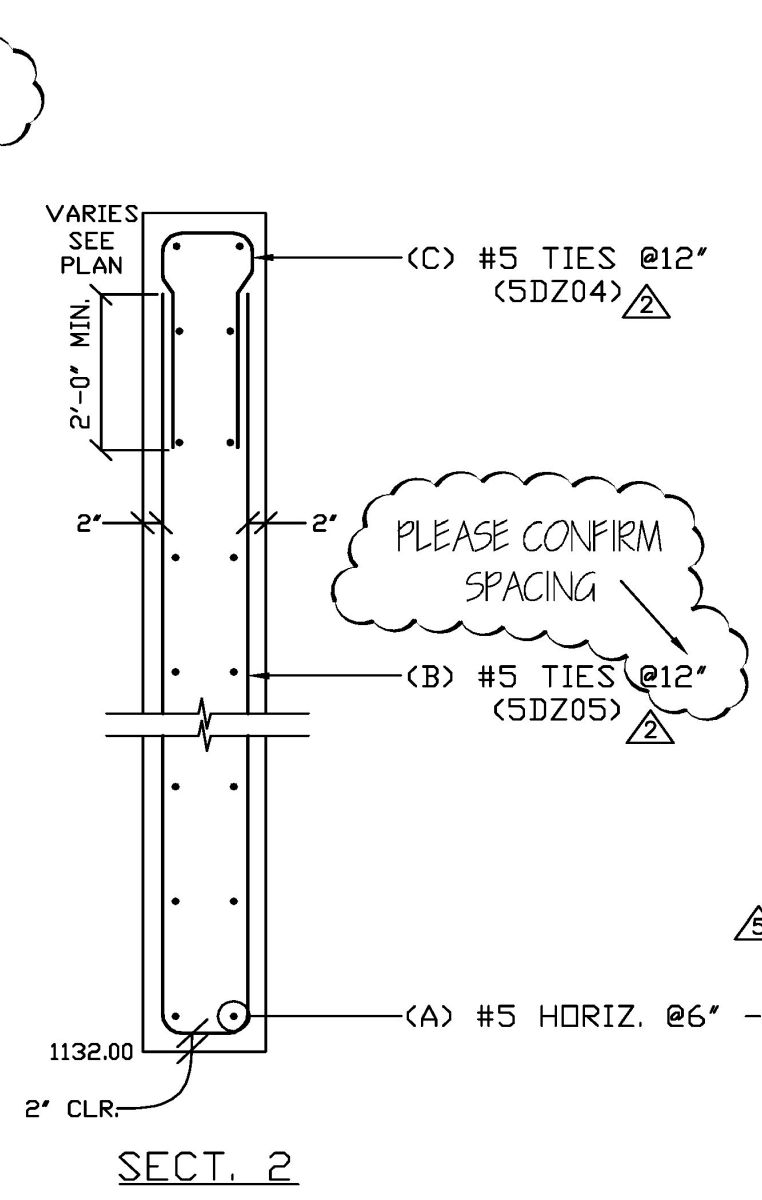
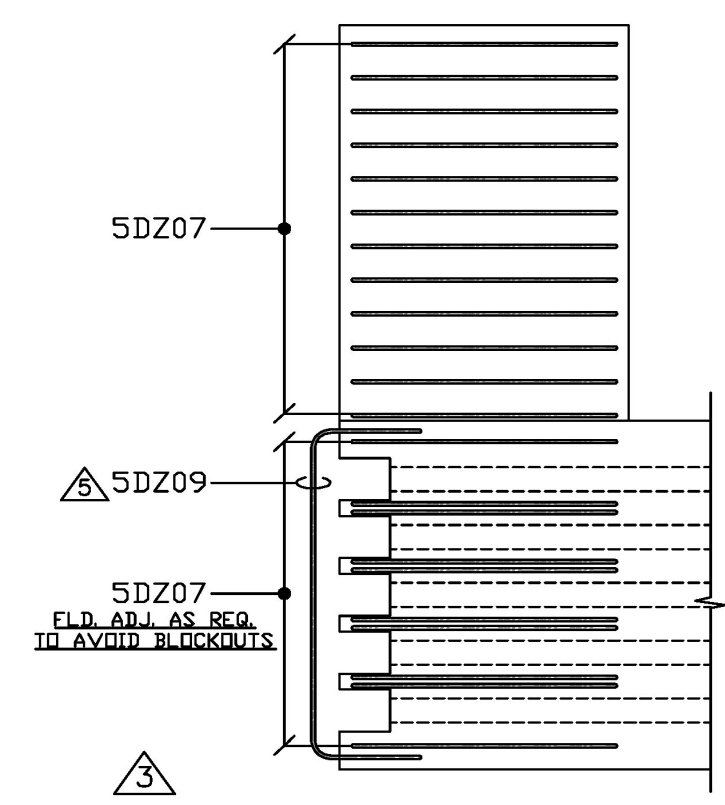
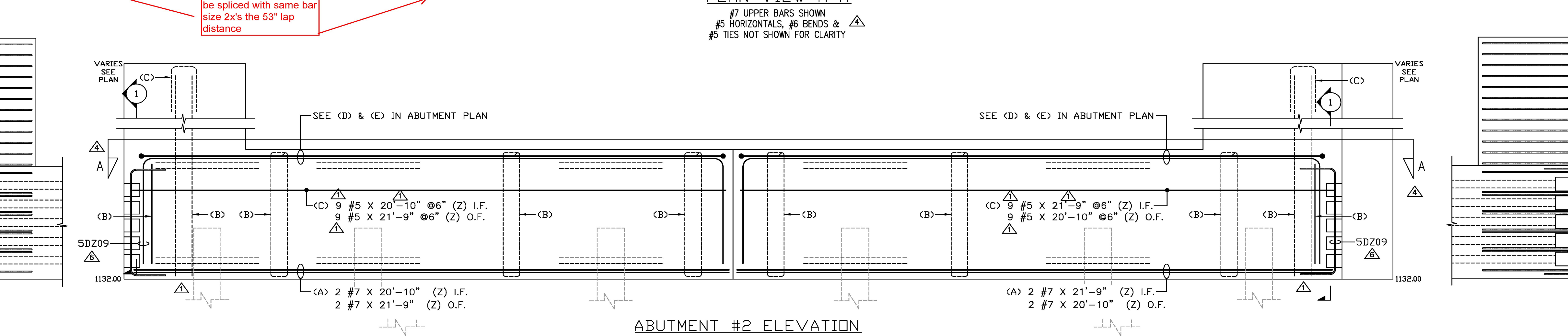
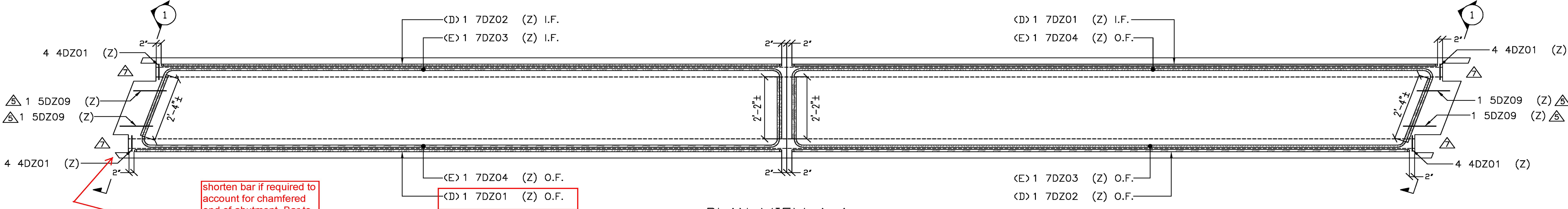
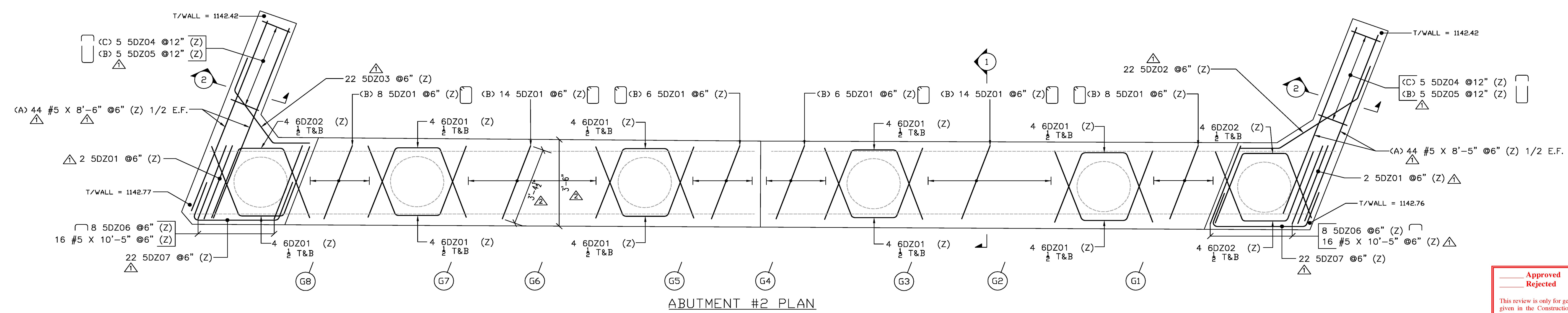
ELEVATIONS & DIMENSIONS SHOWN ON THIS DWG. ARE FOR REINF. DETAILING PURPOSES ONLY AND ARE NOT INTENDED FOR CONSTRUCTION.

REINF. BARS ASTM A615 GRADE 60 DUAL COATED

VERIFICATION OF UNCLEAR INFORMATION MAY BE REQUESTED ON THIS DRAWING. SHOULD VERIFICATION BE LEFT UN-ADDRESSED IT WILL REMAIN AS SHOWN AND ASSUME TO BE CORRECT.

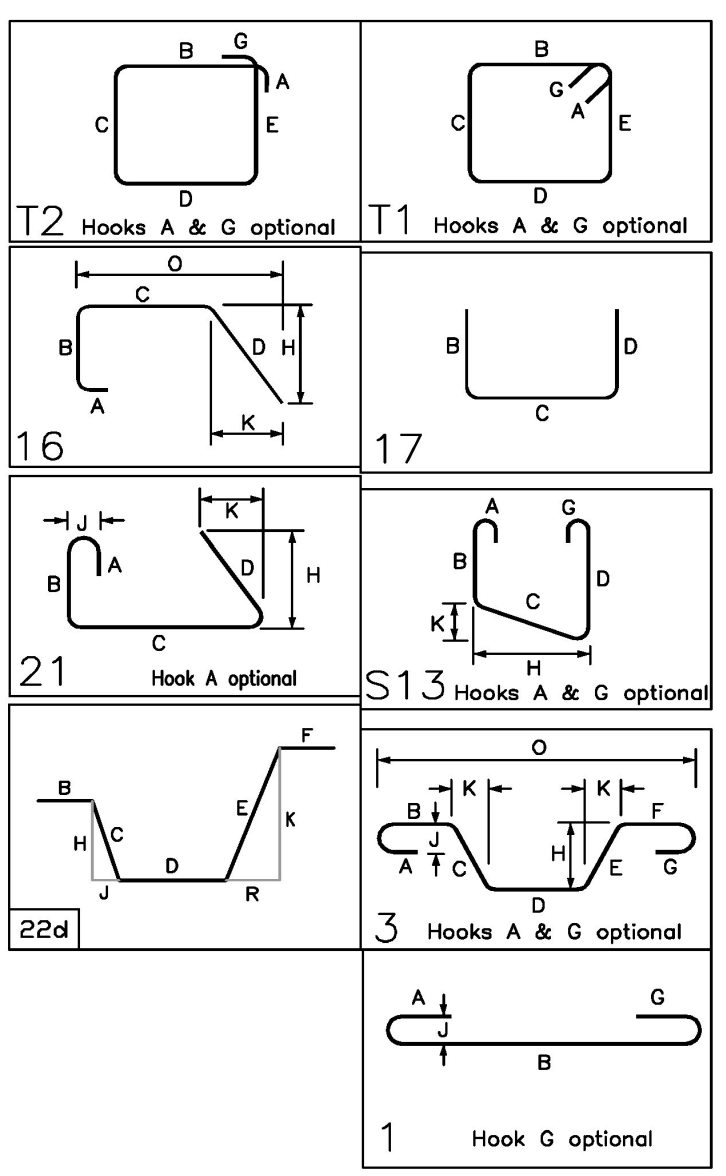
NO.	DATE	REV.#	SENT FOR
6-12-14			REMOVED SD/SDI/FOR RECORD
7-4-30-14			REVISED/SDI/FOR JOB USE
6-4-18-14			APPROVED AS NOTED
5-4-17-14			REVISED/SDI.COM./FOR APPROVAL
4-17-14			REVISED/SDI.COM./FOR APPROVAL
3-4-08-14			REVISED/ENG.COM./FOR APPROVAL
2-24-14			DFI INTERNAL REVIEW/FOR APPROVAL
1-2-18-14			FOR APPROVAL

DIMENSION DIMENSION FABRICATORS INC.		3000 7TH STREET SCOTLAND, N.Y. 12302 PH: (518) 574-1935 FAX: (518) 574-4830 www.dimensionfabricators.com	
STRUCTURE:	VTAOT WARREN BR# 013-4(32) PRECAST		
LOCATION:	BRIDGE 166 ROUTE 100 (MINOR ARTERIAL) WARREN, VT		
ARCHITECT:			
ENGINEER:			
CUSTOMER:	S.D. IRELAND CONCRETE CONST. CORP.		
DRAWN BY:	ED	DATE:	2/18/14
DRAWING NO.:	8756		DPI #
DRAWING COVERS:	ABUTMENT #2		DRAWING #
DUAL COATED REINFORCING			D



Drawing Sheet : D

Bar Mark	Qty	Size	Total Length	Type	'A'	'B'	'C'	'D'	'E'	'F'	'G'	'H'	'J'	'K'	'U'	'R'
4DZ01	16	#4	3'-9"	T2	0'-4 1/2"	0'-9"	0'-9"	0'-9"	0'-9"							
5DZ01	60	#5	17'-4"	T1	0'-5 1/2"	3'-4 1/2"	4'-10"	3'-4 1/2"	4'-10"							
5DZ02	22	#5	7'-0"	22D			2'-0"	3'-7"	1'-5"				1'-2"	1'-7 1/2"	0'-9 1/2"	1'-2"
5DZ03	22	#5	6'-0"	22D			2'-0"	2'-9"	1'-3"				1'-8"	1'-1 1/2"	1'-0 1/2"	0'-8 1/2"
5DZ04	10	#5	6'-4"	17			2'-7"	1'-2"	2'-7"							
5DZ05	10	#5	21'-2"	17			10'-0"	1'-2"	10'-0"							
5DZ06	16	#5	5'-0 1/2"	17			0'-10"	3'-4 1/2"	0'-10"							
5DZ07	44	#5	7'-6"	S13			2'-0"	3'-6"	2'-0"				3'-3 1/2"	1'-2 1/2"	1'-2 3/8"	
6DZ01	36	#6	7'-8"	3			3'-0"	1'-8"	3'-0"				2'-9 1/2"	1'-0 1/2"	3'-9 1/2"	
6DZ02	12	#6	7'-8"	3			3'-0"	1'-8"	3'-0"				2'-9 1/2"	1'-0 1/2"	3'-10"	
7DZ01	2	#7	31'-0"	17			4'-10"	21'-4"	4'-10"							
7DZ02	2	#7	30'-1"	17			4'-10"	20'-5"	4'-10"							
7DZ03	2	#7	25'-2"	16			2'-6"	20'-2"	2'-6"				2'-4 1/2"	0'-10 1/2"	21'-0 1/2"	
7DZ04	2	#7	26'-1 1/2"	21			2'-6"	20'-11"	2'-8 1/2"				2'-7"	0'-9 1/2"		
5DZ09	4	#5	10'-0"	17			2'-7"	4'-10"	2'-7"							



Shorten bar if required to account for chamfered end of abutment. Bar to be spliced with same bar size 2x's the 53" lap distance

PLEASE CONFIRM SPACING