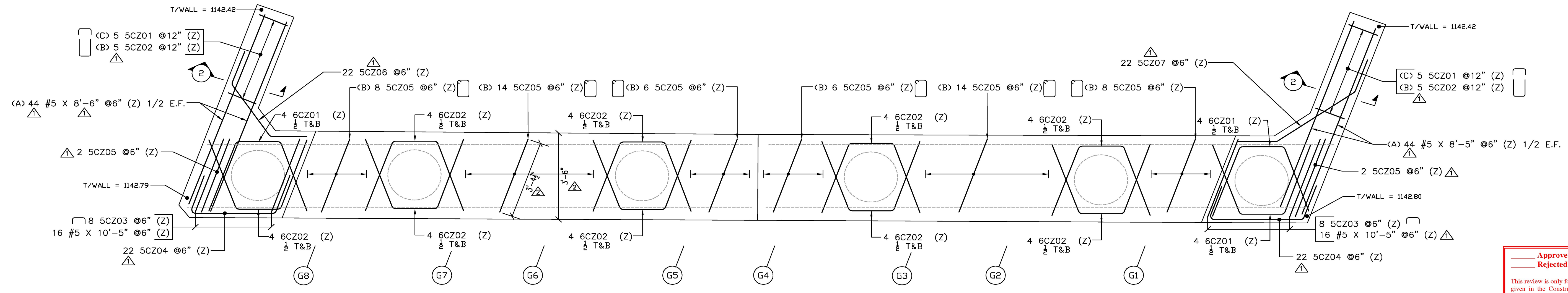


Vermont Agency of Transportation  
 RECEIVED  
 June 12, 2014  
 For Construction  
 CONFORMANCE  
 By: Rob Burns DATE: 6/17/2014



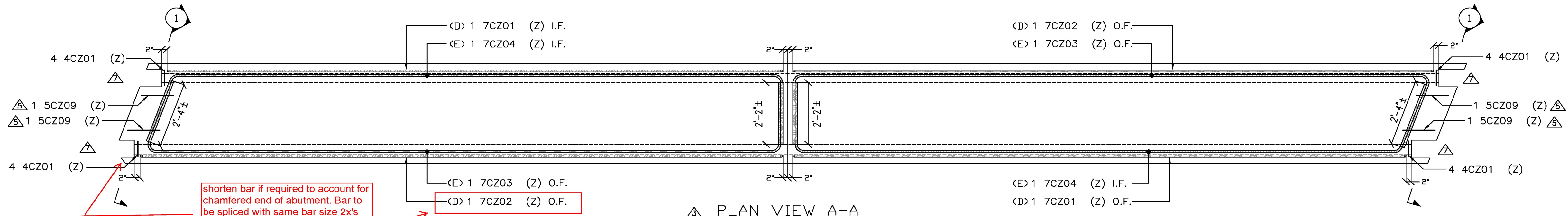
ABUTMENT #1 PLAN

Approved  
 Approved As Noted  
 Rejected

This review is only for general conformance with the design concept and the information given in the Construction Documents. Corrections or comments made on the shop drawings during the review do not relieve the Contractor from compliance with the requirements of the Plans and Specifications. Review of a specific item shall not include review of an assembly of which an item is a component. The Contractor is responsible for dimensions to be confirmed and corrected at the job site. Information that pertains solely to the fabrication process or to the means, methods, techniques, sequences and procedures of construction; coordination of the Work with that of other trades and performing all Work in a safe and satisfactory manner.

Date: 6/13/2014  
 By: D. Kull

McFarland Johnson



PLAN VIEW A-A

shorten bar if required to account for chamfered end of abutment. Bar to be spliced with same bar size 2x's the 53" lap distance.

**LEGEND:**  
 CONT.-CONTINUOUS  
 TRANS.-TRANSVERSE  
 DWLS.-DOWELS  
 VERTS.-VERTICAL  
 HORIZ.-HORIZONTAL  
 T&B -TOP & BOTTOM  
 I.F.-INNER FACE  
 O.F.-OUTER FACE  
 E.E.-EACH END  
 E.F.-EACH FACE  
 F.F.-FRONT FACE  
 R.F.-REAR FACE  
 E.W.-EACH WAY  
 O.C.-ON CENTER  
 L.W.-LONG WAY  
 S.W.-SHORT WAY

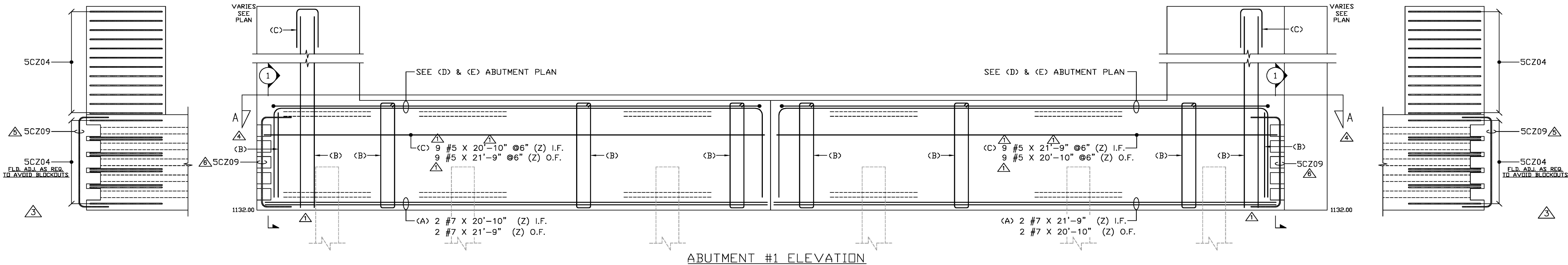
**FOR FIELD USE**

**ALL DUAL COATED REINF. DENOTED (Z)**

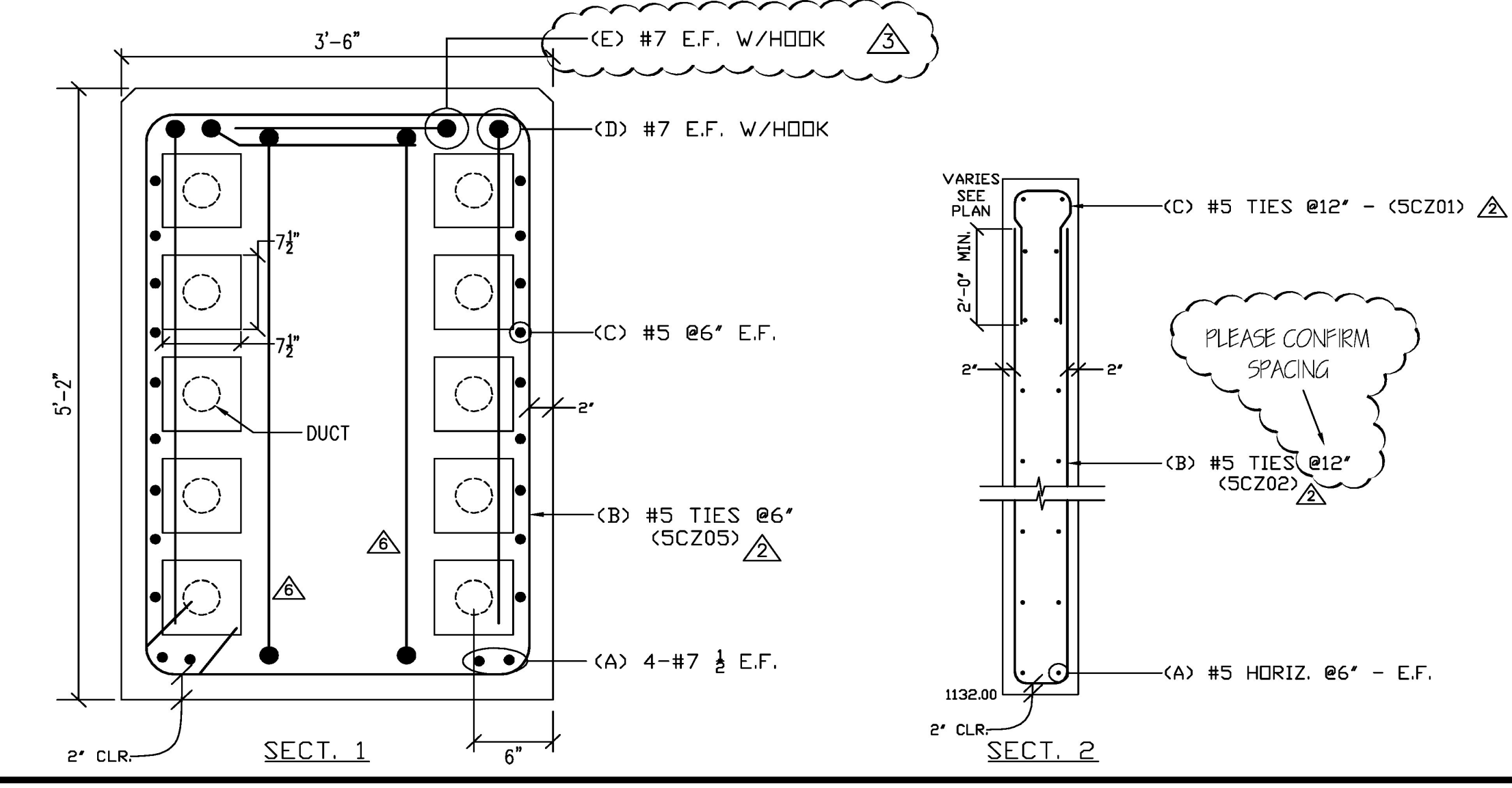
ELEVATIONS & DIMENSIONS SHOWN ON THIS DWG. ARE FOR REINF. DETAILING PURPOSES ONLY AND ARE NOT INTENDED FOR CONSTRUCTION.

REINF. BARS ASTM A615 GRADE 60 DUAL COATED

VERIFICATION OF UNCLEAR INFORMATION MAY BE REQUESTED ON THIS DRAWING. SHOULD VERIFICATION BE LEFT UN-ADDRESSED IT WILL REMAIN AS SHOWN AND ASSUME TO BE CORRECT.

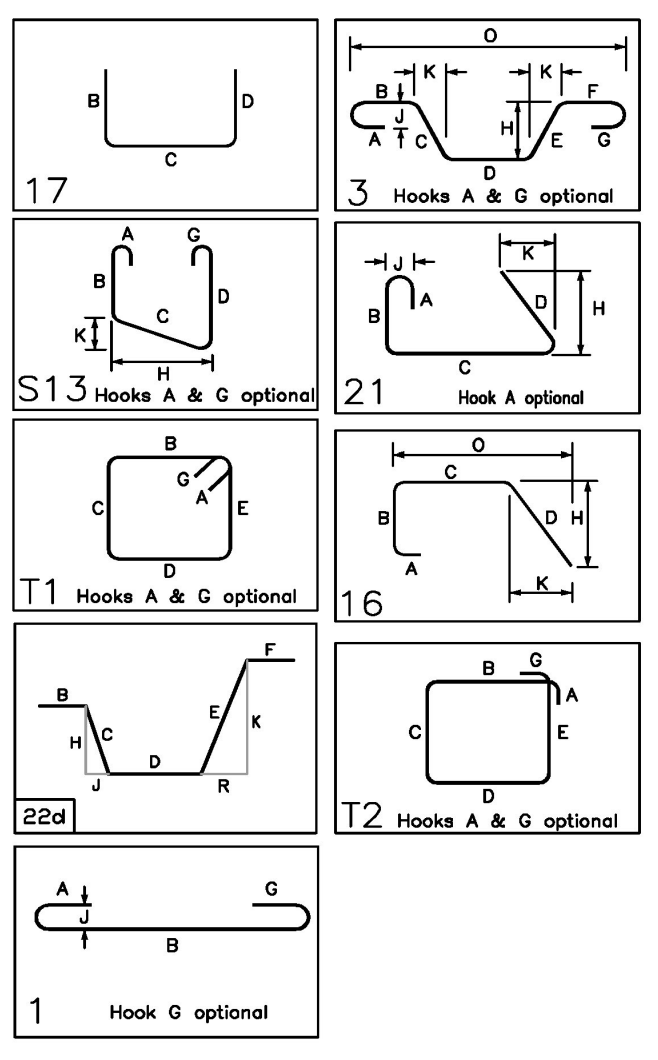


ABUTMENT #1 ELEVATION



Drawing Sheet : C

BAR LIST																	
Bar Mark	Qty	Size	Total Length	Type	'a'	'b'	'c'	'd'	'e'	'f'	'g'	'h'	'j'	'k'	'o'	'r'	
4CZ01	16	#4	3'-9"	T2	0'-4 1/2"	0'-9"	0'-9"	0'-9"	0'-9"		0'-4 1/2"						
4CZ01	8	#4	3'-9"	T2	0'-4 1/2"	0'-9"	0'-9"	0'-9"	0'-9"		0'-4 1/2"						
4CZ01	40	#4	3'-9"	T2	0'-4 1/2"	0'-9"	0'-9"	0'-9"	0'-9"		0'-4 1/2"						
5CZ01	10	#5	6'-4"	T2		2'-7"	1'-2"	2'-7"									
5CZ02	10	#5	21'-2"	T2		10'-0"	1'-2"	10'-0"									
5CZ03	16	#5	5'-0 1/2"	T2		0'-10"	3'-4 1/2"	0'-10"									
5CZ04	44	#5	7'-6"	S13		2'-0"	3'-6"	2'-0"			3'-3 1/2"		1'-2 1/2"	1'-2 3/8"			
5CZ05	60	#5	17'-4"	T1	0'-5 1/2"	3'-4 1/2"	4'-10"	3'-4 1/2"	4'-10"		0'-5 1/2"						
5CZ06	22	#5	6'-0"	T20			2'-0"	2'-9"	1'-3"			1'-8"	1'-1 1/2"	1'-0 1/2"	0'-8 3/4"		
5CZ07	22	#5	7'-0"	T20			2'-0"	3'-7"	1'-5"			1'-2"	1'-7 1/2"	0'-9 1/2"	1'-2"		
5CZ09	4	#5	10'-0"	T2		2'-7"	4'-10"	2'-7"									
5CZ10	2	#5	9'-6"	T2		2'-7"	4'-4"	2'-7"									
6CZ01	12	#6	7'-8"	3			3'-0"	1'-8"	3'-0"			2'-9 1/2"		1'-0 1/2"	3'-10"		
6CZ02	36	#6	7'-8"	3			3'-0"	1'-8"	3'-0"			2'-9 1/2"		1'-0 1/2"	3'-9 1/2"		
7CZ01	2	#7	30'-1"	T2		4'-10"	20'-5"	4'-10"									
7CZ02	2	#7	31'-0"	T2		4'-10"	21'-4"	4'-10"									
7CZ03	2	#7	26'-1 1/2"	T1		2'-6"	20'-11"	2'-8 1/2"				2'-7"		0'-9 1/2"	21'-0 7/8"		
7CZ04	2	#7	25'-2 1/2"	T16		2'-6"	20'-2"	2'-6 1/2"				2'-4 1/2"		0'-10 1/2"	21'-0 7/8"		



NO.	DATE	REV.#	SENT FOR
1	2-18-14		FOR APPROVAL
2	2-24-14		DFI INTERNAL REVIEW/FOR APPROVAL
3	4-08-14		REVIEWED/ENG. COM./FOR APPROVAL
4	4-17-14		REVIEWED/SDI COM./FOR APPROVAL
5	4-17-14		REVIEWED/SDI COM./FOR APPROVAL
6	4-18-14		APPROVED AS NOTED
7	4-30-14		REVISED/SDI/FOR JOB USE
8	6-12-14		REMOVED 5CZ08/SDI/FOR RECORD

STRUCTURE: VTAOT WARREN BRF 013-4(32) PRECAST  
 LOCATION: BRIDGE 166 ROUTE 100 (MINOR ARTERIAL) WARREN, VT  
 ARCHITECT: [blank]  
 ENGINEER: [blank]  
 CUSTOMER: S.D. IRELAND CONCRETE CONST. CORP.  
 DRAWN BY: ED DATE: 2/18/14 DPT #: 8756  
 DRAWING COVERS: ABUTMENT #1 DUAL COATED REINFORCING DRAWING #: C