


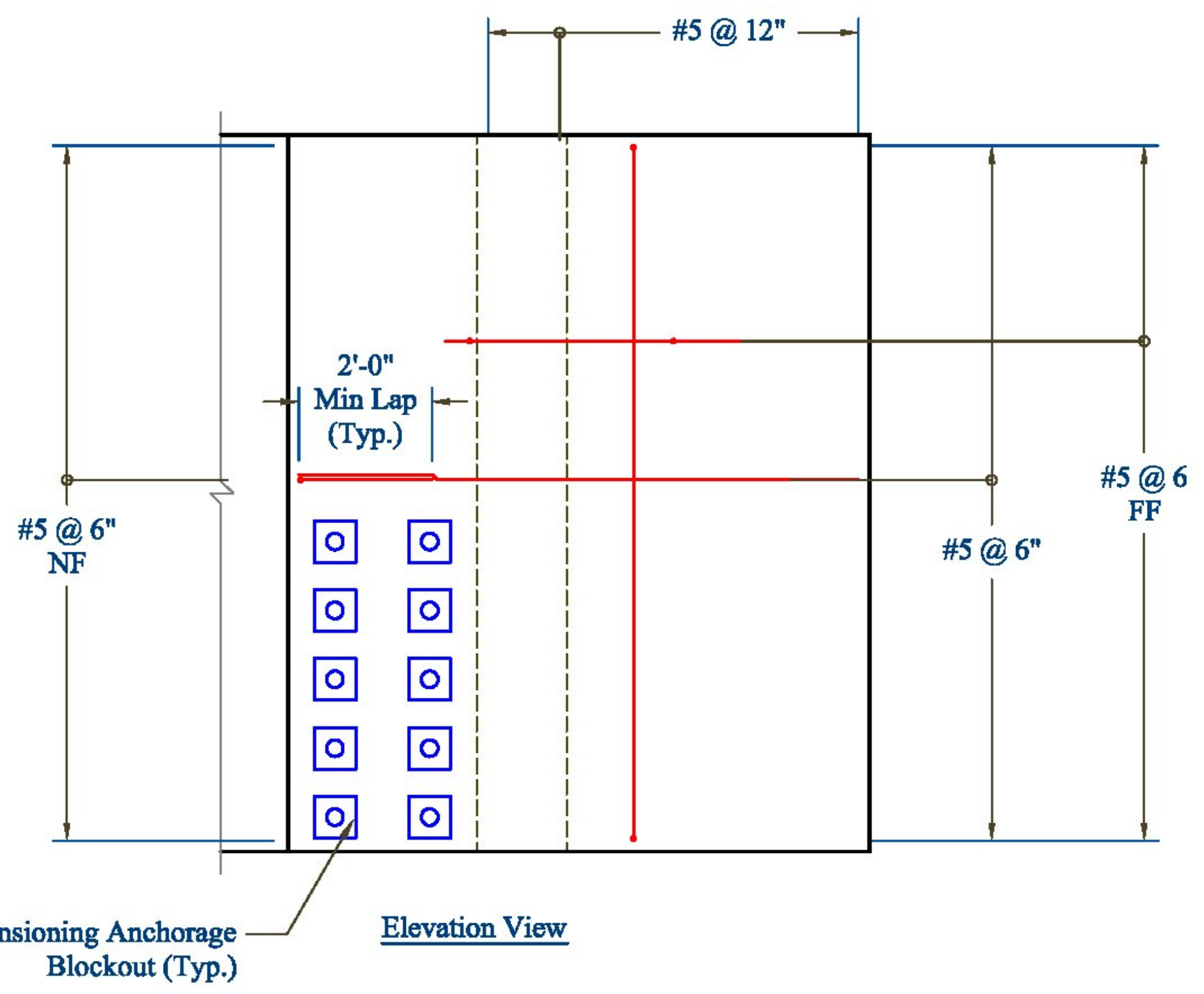
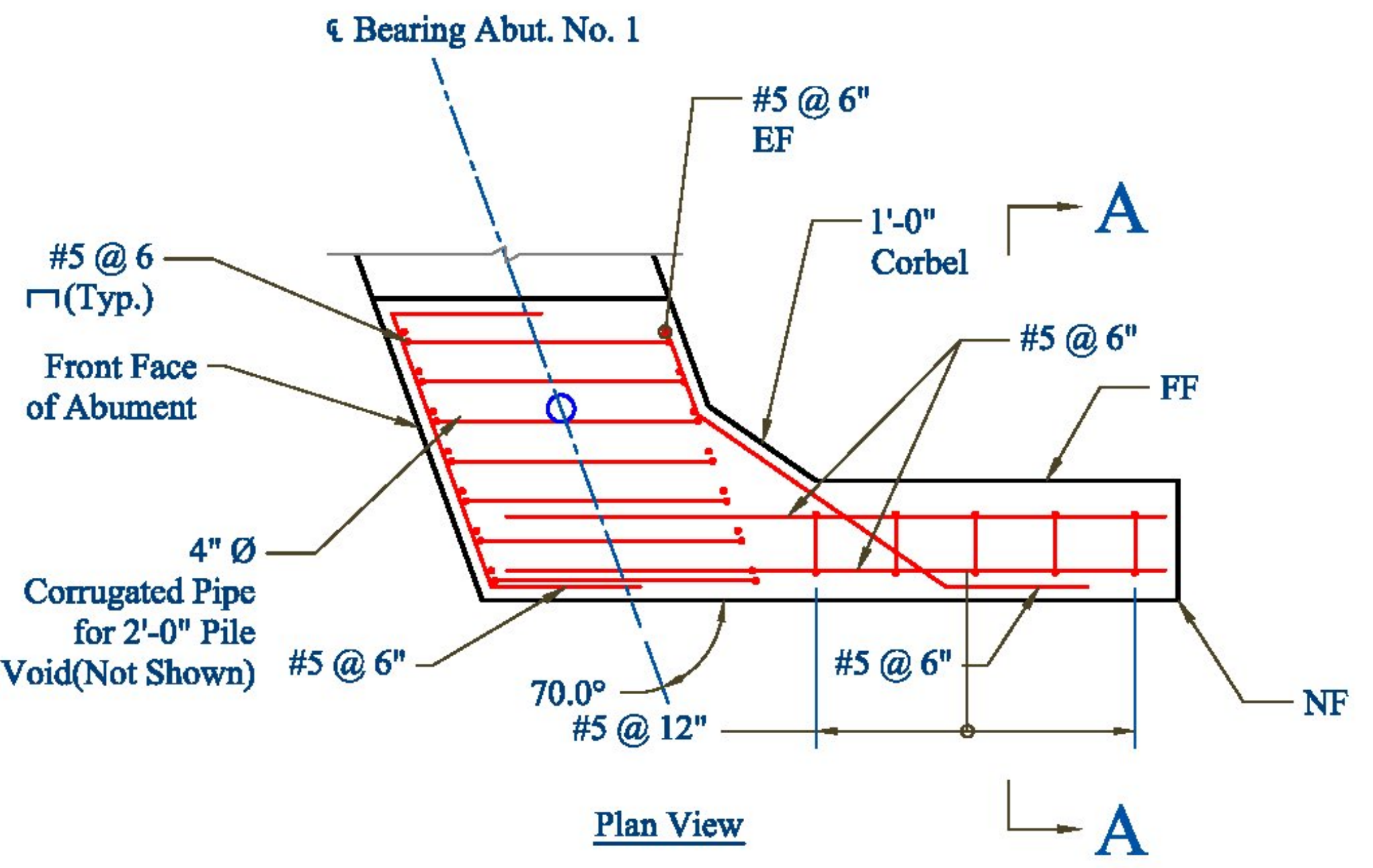
Approved  
 Rejected
 
 Approved As Noted

Vermont Agency of Transportation  
**RECEIVED**  
 ON: June 12, 2014  
 and Checked for  
**CONFORMANCE**  
 BY: Rob Young DATE: 6/17/2014

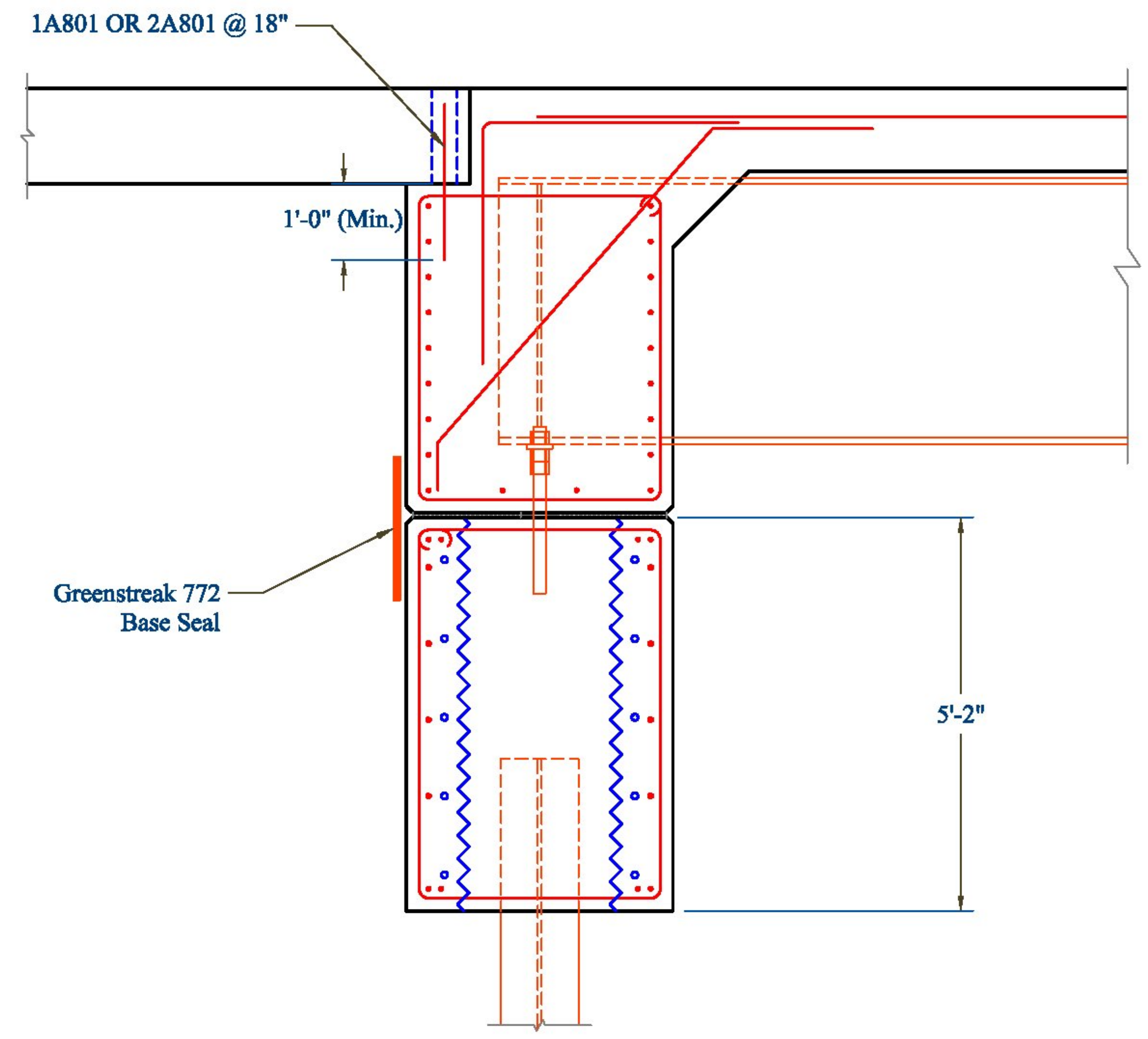
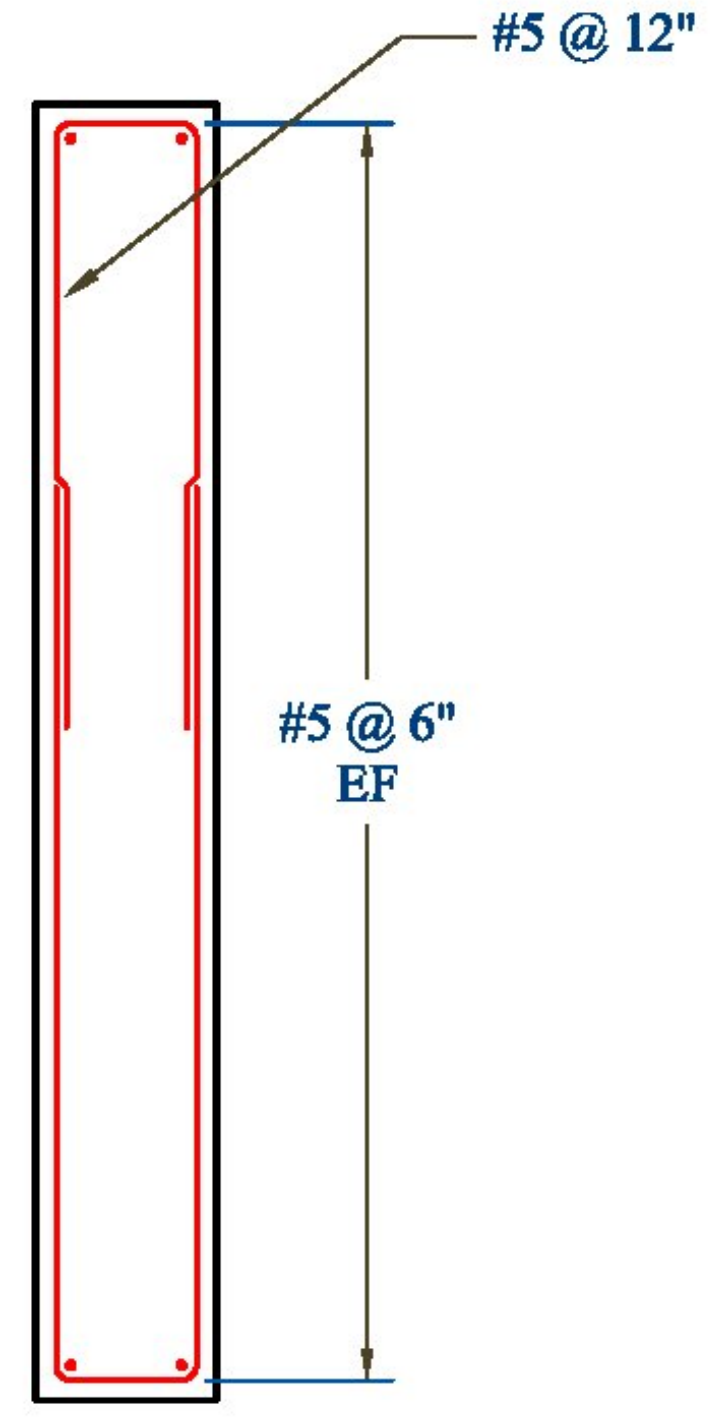
This review is only for general conformance with the design concept and the information given in the Construction Documents. Corrections or comments made on the shop drawings during the review do not relieve the Contractor from compliance with the requirements of the Plans and Specifications. Review of a specific item shall not include review of an assembly of which an item is a component. The Contractor is responsible for dimensions to be confirmed and corrected at the job site; information that pertains solely to the fabrication process or to the means, methods, techniques, sequences and procedures of construction; coordination of the Work with that of other trades and performing all Work in a safe and satisfactory manner.

Date: 6/13/2014  
 By: D. Kull

 **McFarland Johnson**



**Wing Wall Detail**  
 Wing Wall 1 Shown



**Approach Slab to Abutment Detail**

CONTRACTORS VISPE:

PRECAST CONCRETE ABUTMENT SHOP DRAWINGS (SDI JOB #14046)  
 SUPERVISOR: M. WHEELER  
 DETAILER: I. ADAMS  
 CHECKER: E. Barendse  
 ENGINEER: N/A

PROJECT NAME: Warren  
 PROJECT #: BRF 013-4(32)  
 LOCATION: Bridge #166  
 Route 100, Warren, VT

Luck Brothers, Inc  
 73 Trade Road  
 Plattsburg, NY, 12901  
 Ph: (518)-561-4321  
 06/12/2014

FABRICATOR:  
 193 INDUSTRIAL AVE.  
 WILLISTON, VT 05495  
 Ph: (802) 658-0201



Abutment 2