

Approved  
 Rejected

This review is only for general conformance with the design concept and the information given in the Construction Documents. Corrections or comments made on the shop drawings during the review do not relieve the Contractor from compliance with the requirements of the Plans and Specifications. Review of a specific item shall not include review of an assembly of which an item is a component. The Contractor is responsible for dimensions to be confirmed and corrected at the job site; information that pertains solely to the fabrication process or to the means, methods, techniques, sequences and procedures of construction; coordination of the Work with that of other trades and performing all Work in a safe and satisfactory manner.

Date: 5/29/2014  
 By: D. Kull

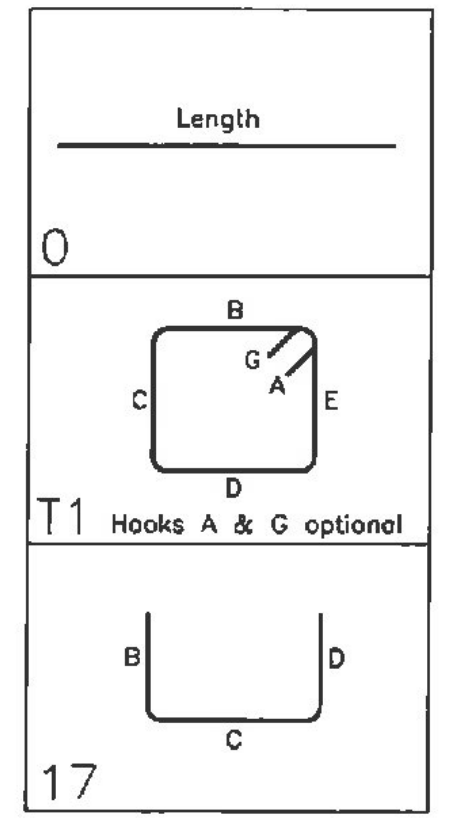
**McFarland Johnson**

Vermont Agency of Transportation  
**RECEIVED**  
 ON: May 23, 2014  
 and Checked for  
**CONFORMANCE**  
 BY: Rob Young DATE: 05/30/2014

Drawing Sheet : A

BAR LIST				'A'	'B'	'C'	'D'	'E'	'F'	'G'	'H'	'J'	'K'	'O'	'R'
51A501	* 14	#5	35'-0"		35'-0"										
51A502	8	#5	35'-0"		35'-0"										
51A503	16	#5	7'-1"		7'-1"										
51A504	12	#5	3'-0"		3'-0"										
51A550	18	#5	14'-10"	T1	0'-5 1/2"	3'-4 1/2"	3'-7"	3'-4 1/2"	3'-7"		0'-5 1/2"				
51A551	18	#5	14'-6"	T1	0'-5 1/2"	3'-4 1/2"	3'-5"	3'-4 1/2"	3'-5"		0'-5 1/2"				
51A553	* 12	#5	30'-0"		30'-0"										
51A554	12	#5	19'-0"		19'-0"										
52A501	14	#5	35'-0"		35'-0"										
52A502	8	#5	35'-0"		35'-0"										
52A503	16	#5	7'-1"		7'-1"										
52A504	12	#5	3'-0"		3'-0"										
52A550	18	#5	14'-10"	T1	0'-5 1/2"	3'-4 1/2"	3'-7"	3'-4 1/2"	3'-7"		0'-5 1/2"				
52A551	18	#5	14'-6"	T1	0'-5 1/2"	3'-4 1/2"	3'-5"	3'-4 1/2"	3'-5"		0'-5 1/2"				
61A650	* 37	#6	7'-2"	17		3'-7"	3'-7"								
62A650	* 37	#6	7'-2"	17		3'-7"	3'-7"								
81A801	* 22	#8	2'-0"		2'-0"										
82A801	* 22	#8	2'-0"		2'-0"										

\* BARS FOR TESTING PURPOSES INCLUDED



Vermont Agency of Transportation  
**RECEIVED**  
 ON: April 11, 2014  
 and Checked for  
**CONFORMANCE**  
 BY: Rob Young DATE: 04/14/2014

**ALL DUAL COATED REINF. DENOTED (Z)**

**LEGEND:**  
 CONT.-CONTINUOUS  
 TRANS.-TRANSVERSE  
 DWLS.-DOWELS  
 HORIZ.-HORIZONTAL  
 T&B -TOP & BOTTOM  
 I.F.-INNER FACE  
 O.F.-OUTER FACE  
 E.E.-EACH END  
 E.F.-EACH FACE  
 F.F.-FRONT FACE  
 R.F.-REAR FACE  
 E.W.-EACH WAY  
 D.C.-ON CENTER  
 L.W.-LONG WAY  
 S.W.-SHORT WAY

**FOR APPROVAL**

ELEVATIONS & DIMENSIONS SHOWN ON THIS DWG. ARE FOR REINF. DETAILING PURPOSES ONLY AND ARE NOT INTENDED FOR CONSTRUCTION.

REINF. BARS ASTM A615 GRADE 60 DUAL COATED

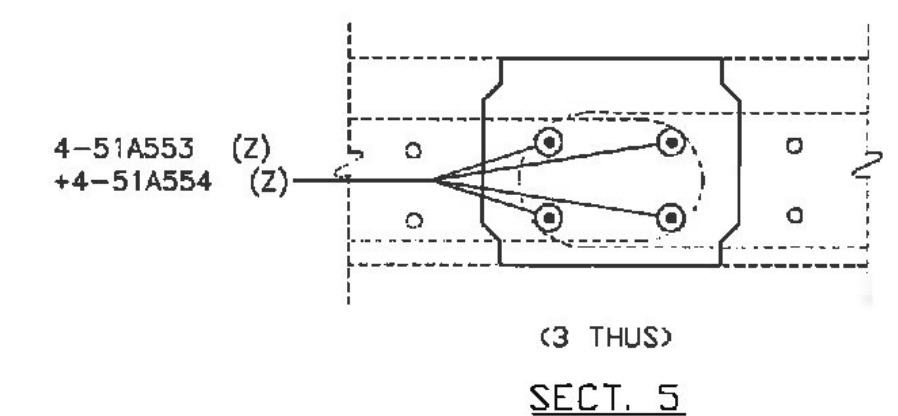
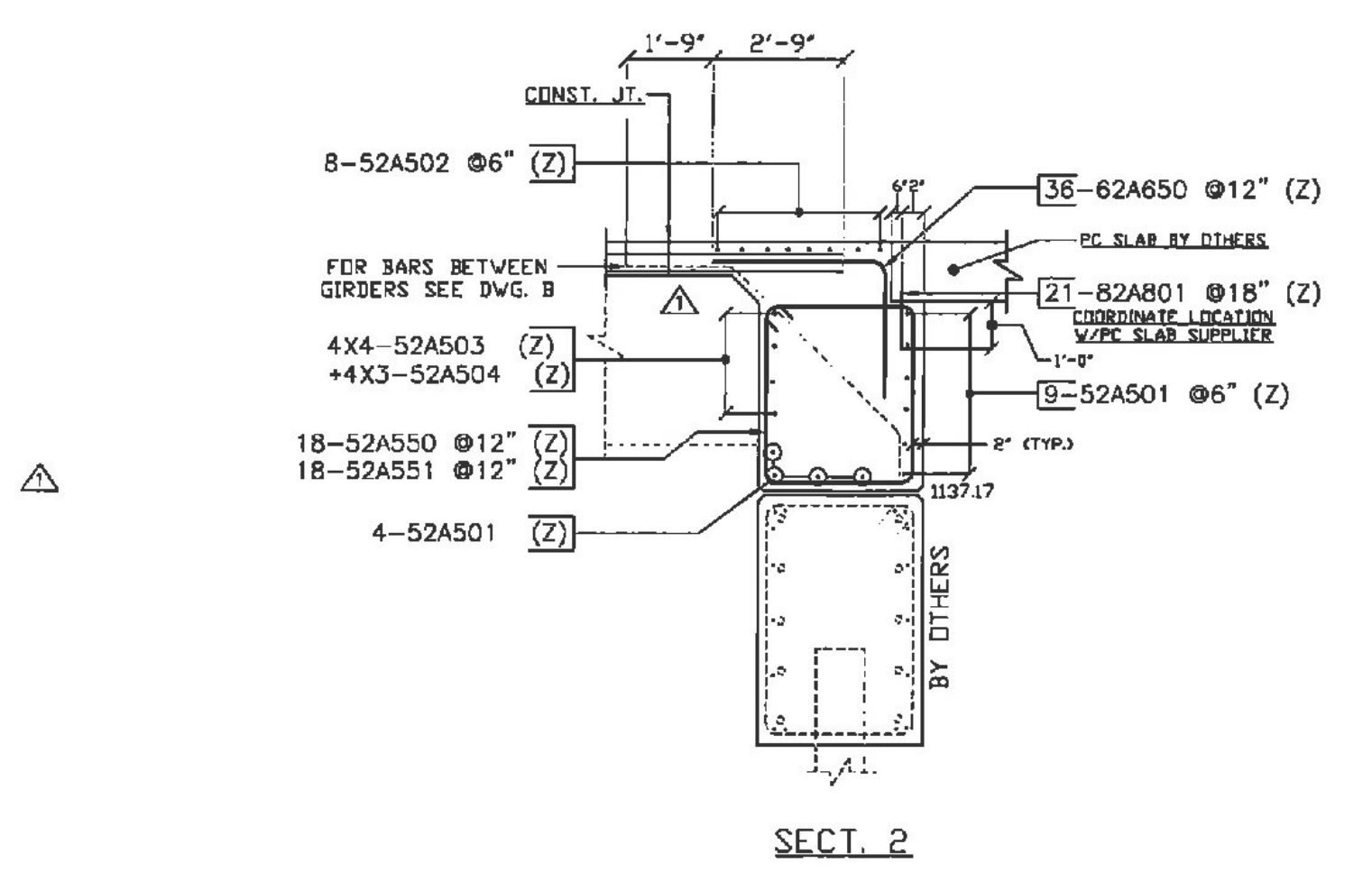
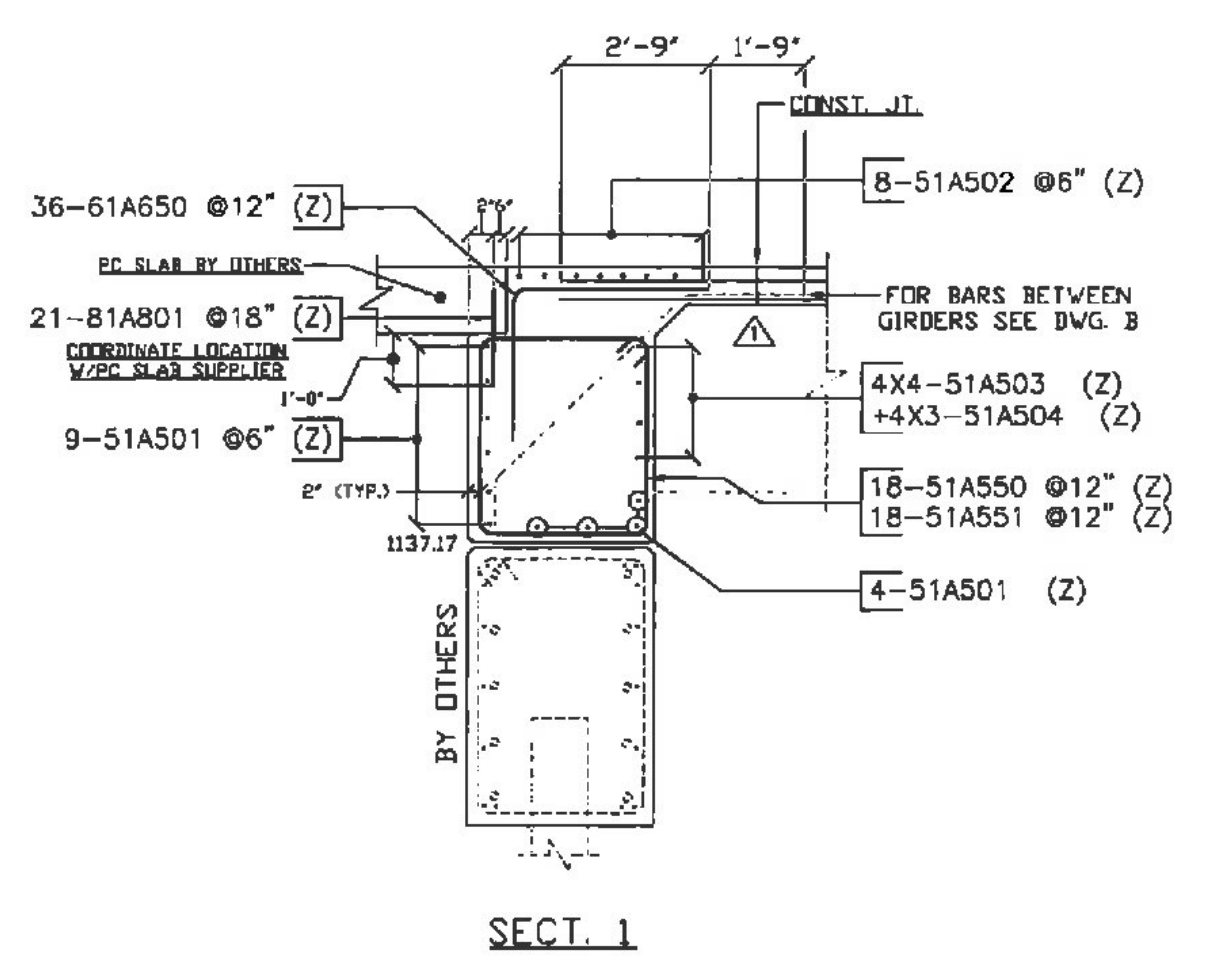
VERIFICATION OF UNCLEAR INFORMATION MAY BE REQUESTED ON THIS DRAWING. SHOULD VERIFICATION BE LEFT UN-ADDRESSED IT WILL REMAIN AS SHOWN AND ASSUME TO BE CORRECT.

Approved  
 Rejected

This review is only for general conformance with the design concept and the information given in the Construction Documents. Corrections or comments made on the shop drawings during the review do not relieve the Contractor from compliance with the requirements of the Plans and Specifications. Review of a specific item shall not include review of an assembly of which an item is a component. The Contractor is responsible for dimensions to be confirmed and corrected at the job site; information that pertains solely to the fabrication process or to the means, methods, techniques, sequences and procedures of construction; coordination of the Work with that of other trades and performing all Work in a safe and satisfactory manner.

Date: 4/14/2014  
 By: D. Kull

**McFarland Johnson**



6			
5			
4			
3			
2	4-10-14	REVISED/ENG.COM/FOR APPROVAL	
1	3-3-14	FOR APPROVAL	
DATE	REV.#	SENT FOR	
<b>DIMENSION</b>			
DIMENSION FABRICATORS INC.			
VTAOT WARREN BR# 013-4(32) PRECAST			
LOCATION	BRIDGE 166 ROUTE 100 (MINOR ARTERIAL)		
ARCHITECT	WARREN, VT		
ENGINEER			
OWNER	LUCK BROTHERS INC.		
DRAWN BY	ED	DATE	3/3/14
CHECKED BY		DATE	8/7/14
PROJECT NO.	LEVEL 2 ABUTMENT		8747
SCALE	DUAL COATED CIP REINFORCING		A