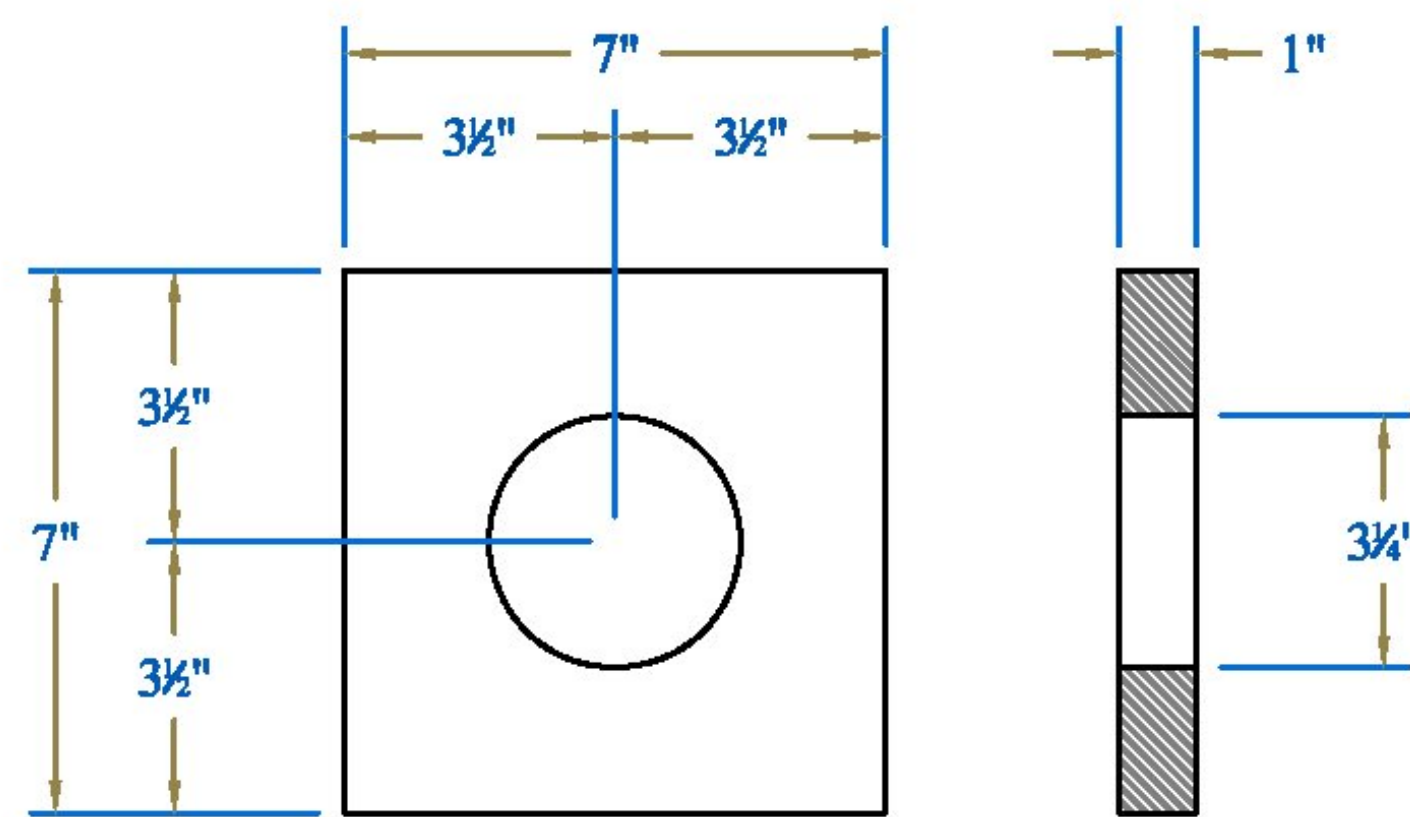
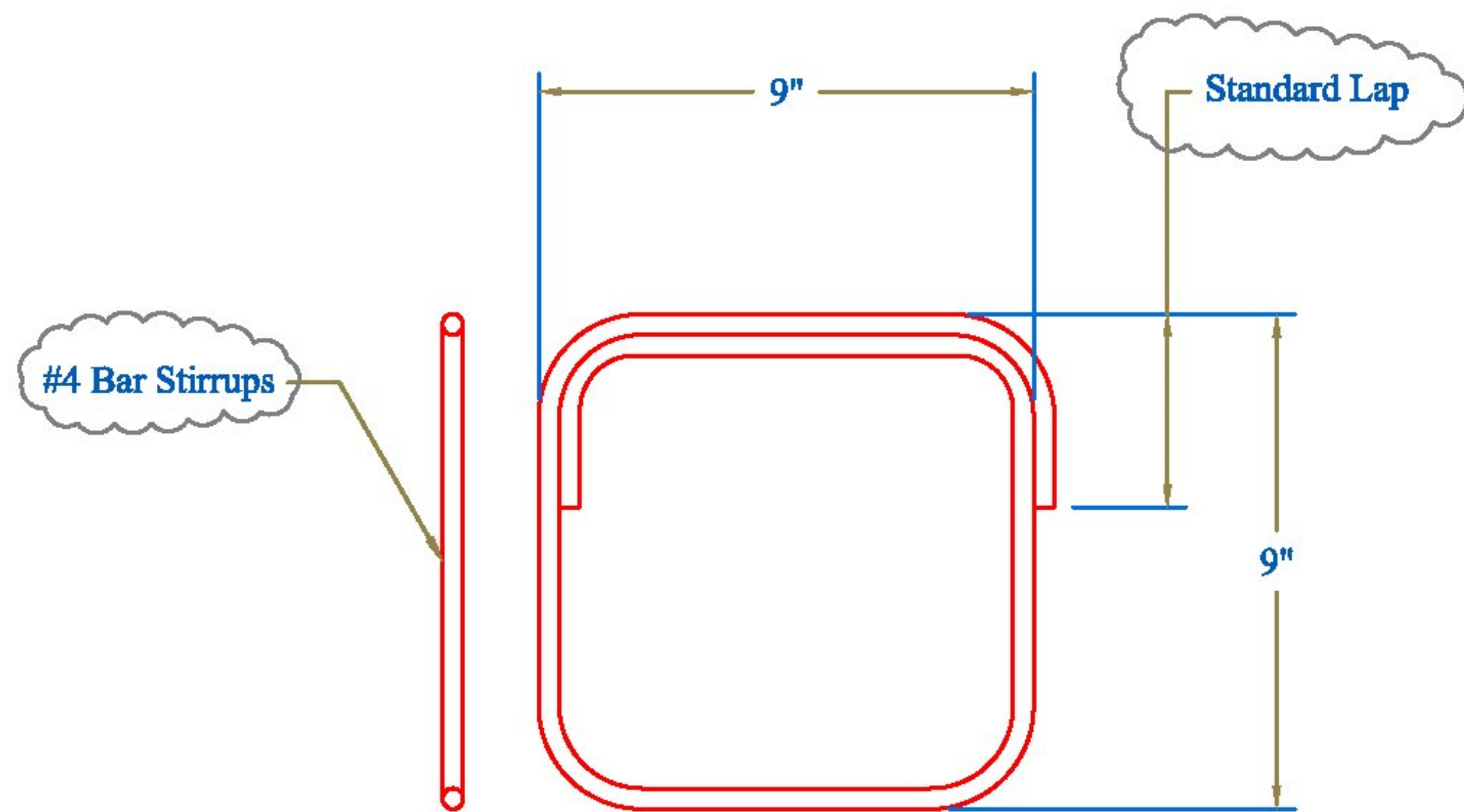


Typical 4-0.6" Cast Wedge Plate

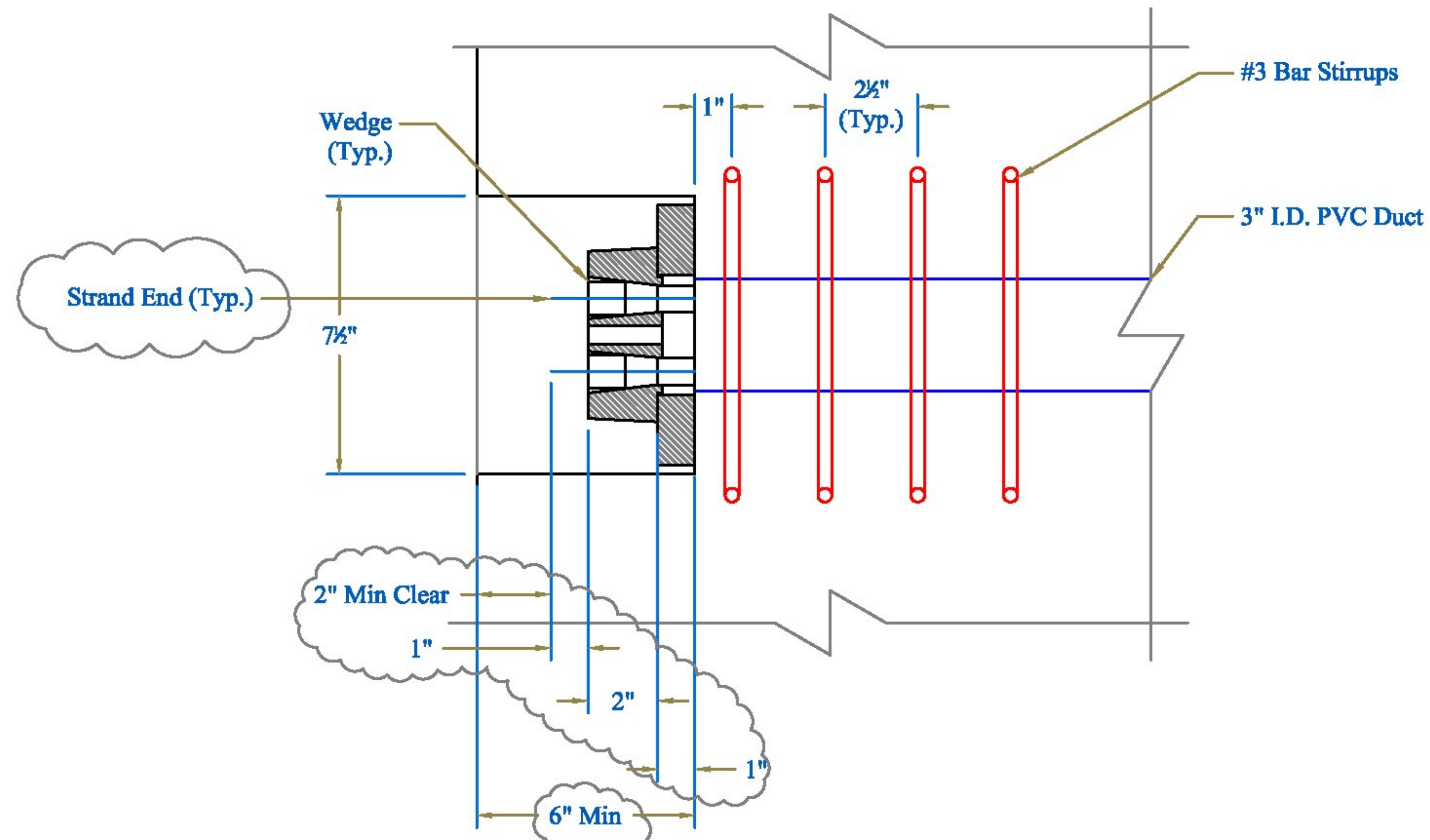
Part # 68-04 1532 13



Bearing Plate

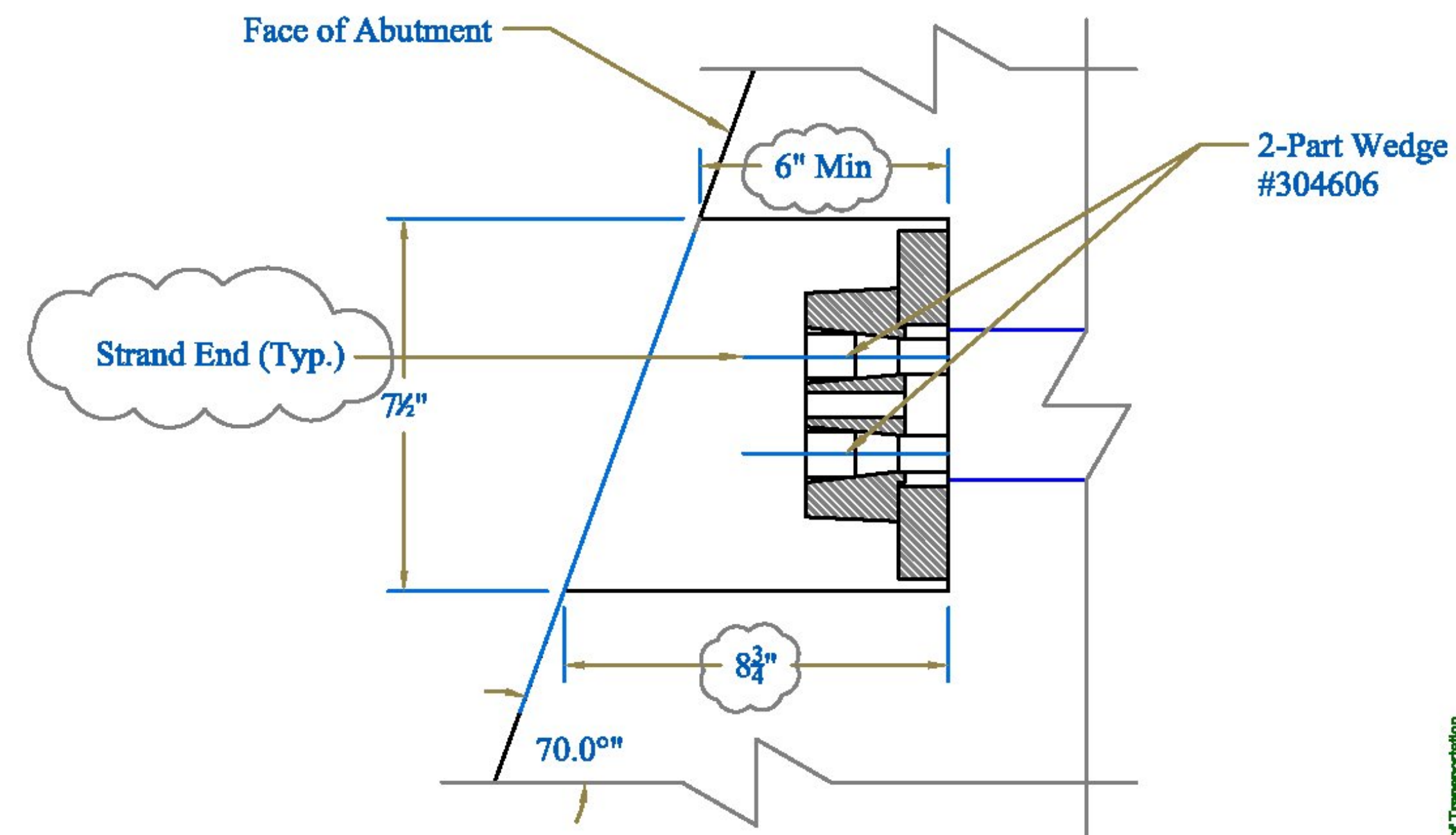


Reinforcement Detail



Bearing Plate Section

ANS(A Non Stock) Plate (Manufactured per Request so Not Part #)



Bearing Plate Plan

Approved
 Rejected
 Approved As Noted

This review is only for general conformance with the design concept and the information given in the Construction Documents. Corrections or comments made on the shop drawings during the review do not relieve the Contractor from compliance with the requirements of the Plans and Specifications. Review of a specific item shall not include review of an assembly of which an item is a component. The Contractor is responsible for dimensions to be confirmed and corrected at the job site; information that pertains solely to the fabrication process or to the means, methods, techniques, sequences and procedures of construction, coordination of the Work with that of other trades and performing all Work in a safe and satisfactory manner.

Date: 6/13/2014
 By: D. Kull

Vermont Agency of Transportation
RECEIVED
 ON: June 12, 2014
 and Checked for
CONFORMANCE
 BY: Rob Young DATE: 6/17/2014

McFarland Johnson

CONTRACTORS VTSPE:

PRECAST CONCRETE ABUTMENT SHOP DRAWINGS (SDI JOB #14046)
 SUPERVISOR: M. WHEELER
 DETAILER: I. ADAMS
 CHECKER: E. Barendse
 ENGINEER: N/A

PROJECT NAME: Warren
 PROJECT #: BRF 013-4(32)
 LOCATION: Bridge #166
 Route 100, Warren, VT

Luck Brothers, Inc
 73 Trade Road
 Plattsburg, NY, 12901
 Ph: (518)-561-4321

04/08/2014

FABRICATOR:
 193 INDUSTRIAL AVE.
 WILLISTON, VT 05495
 Ph: (802) 658-0201

Post Tensioning Details

