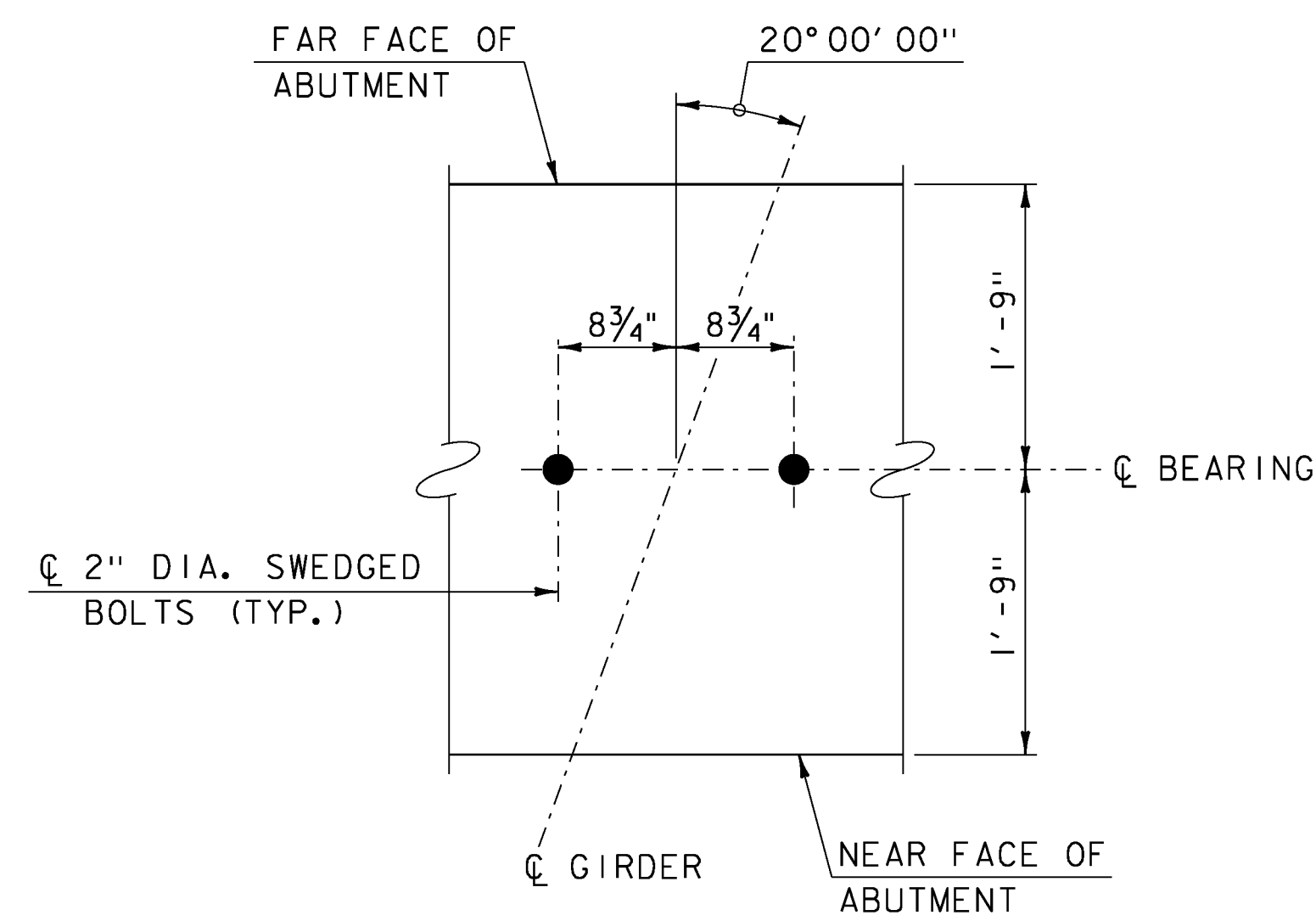


**SUPPORT BOLT DETAIL**

SCALE: 1" = 1'-0"

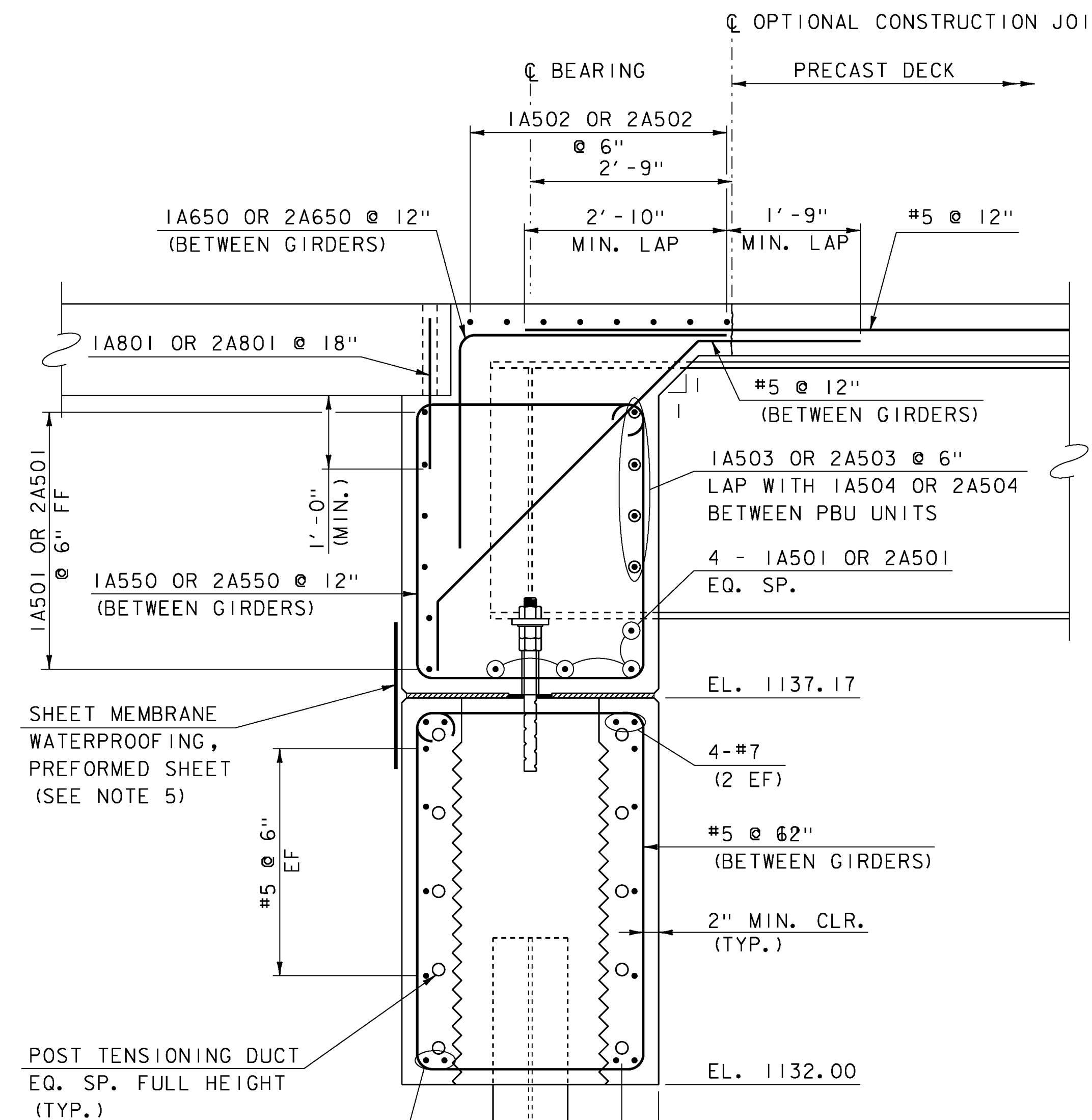


**SUPPORT BOLT LAYOUT**

SCALE: 1" = 1'-0"

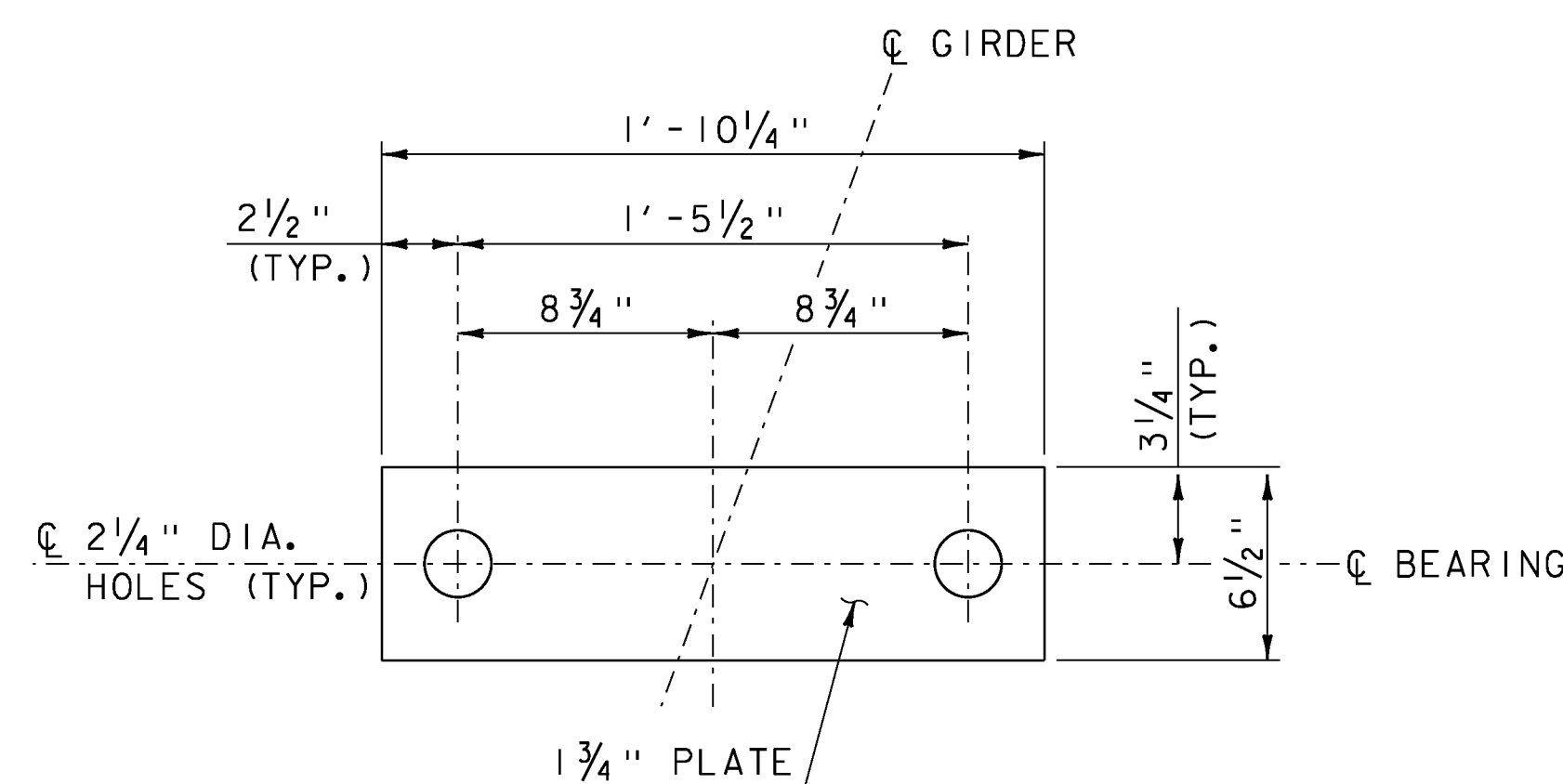
**NOTE:**

- NF = NEAR FACE
- FF = FAR FACE
- EF = EACH FACE
- ▲ = CUT TO FIT IN FIELD
- 3" CLEAR, UNLESS OTHERWISE SPECIFIED ON THE PLANS.
- 2'-2" BAR LAP UNLESS OTHERWISE SPECIFIED ON THE PLANS.



**ABUTMENT SECTION**

SCALE: 3/4" = 1'-0"



**LEVELING PLATE**

SCALE: 2" = 1'-0"

**NOTES**

1. PAYMENT FOR TEMPORARY SUPPORT ASSEMBLIES SHALL BE INCIDENTAL TO RESPECTIVE 540.10 ITEMS.
2. THE TOP SURFACE OF THE LEVELING PLATE SHALL BE GREASED PRIOR TO SETTING PBU'S. EXCESS GREASE SHALL BE WIPED CLEAN AFTER PBU'S HAVE BEEN SET.
3. LEVELING PLATES SHALL BE LEVEL PRIOR TO SETTING PBU'S. ELEVATIONS SHALL BE ADJUSTED TO WITHIN 0.10 FT OF REQUIRED ELEVATIONS.
4. LEVELING PLATE STEEL SHALL BE GRADE 50 AND CONFORM TO SUBSECTION 714.03. ANCHOR RODS SHALL MEET THE REQUIREMENTS OF SUBSECTION 714.08 AND SHALL BE GRADE 55.
5. PREFORMED SHEET INCIDENTAL TO ITEMS 540.10 PRECAST CONCRETE STRUCTURE (ABUTMENT NO. 1) OR PRECAST CONCRETE STRUCTURE (ABUTMENT NO. 2) AND SHALL MEET THE REQUIREMENTS OF SUBSECTION 707.07.

PROJECT NAME: WARREN  
PROJECT NUMBER: BRF 013-4(32)

FILE NAME: z10B424abutdtis.dgn PLOT DATE: 04-OCT-2013  
PROJECT LEADER: R. YOUNG DRAWN BY: P. DUSTIN  
DESIGNED BY: D. KULL CHECKED BY: T. KENDRICK  
ABUTMENT DETAILS SHEET 25 OF 42