

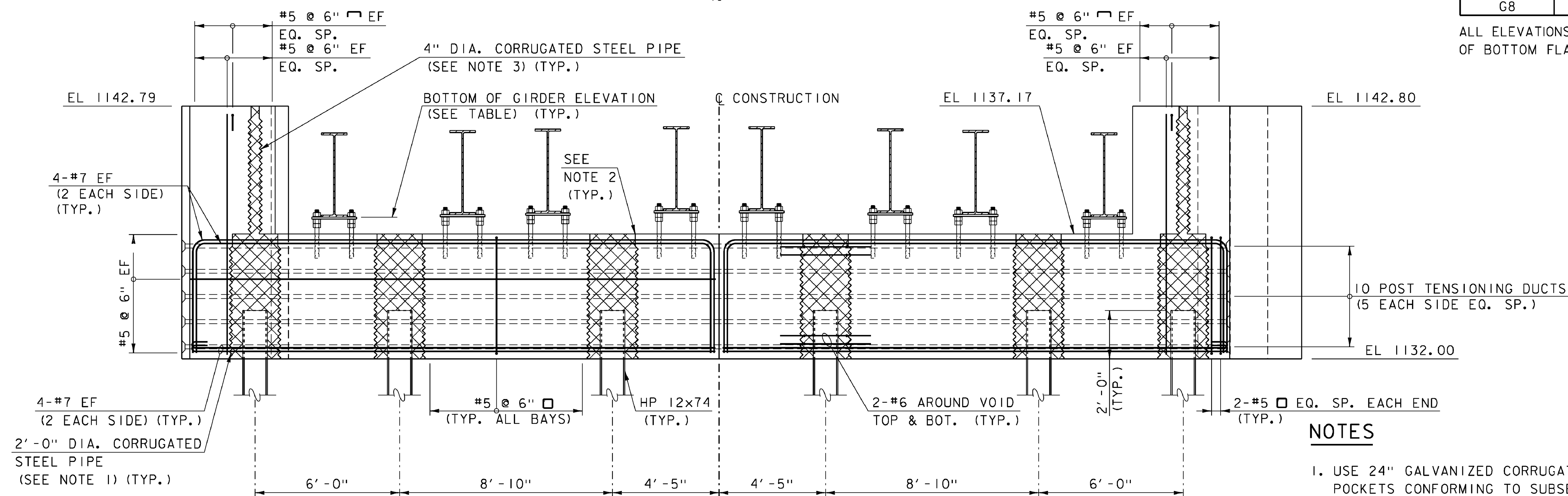
NOTE: ABUTMENT PLAN BELOW BRIDGE SEAT SHOWN.  
FOR PLAN VIEW ABOVE BRIDGE SHEET, SEE  
SHEET 28.

**PRECAST ABUTMENT NO. 1 PLAN**

SCALE: 3/8" = 1'-0"

| GIRDER ELEVATION TABLE |           |         | REVISED ELEVATIONS |
|------------------------|-----------|---------|--------------------|
| GIRDER                 | ELEVATION | Abut 1  |                    |
| G1                     | 1137.88   | 1137.71 |                    |
| G2                     | 1137.98   | 1137.79 |                    |
| G3                     | 1138.04   | 1137.88 |                    |
| G4                     | 1138.13   | 1137.96 |                    |
| G5                     | 1138.13   | 1137.96 |                    |
| G6                     | 1138.03   | 1137.88 |                    |
| G7                     | 1137.97   | 1137.81 |                    |
| G8                     | 1137.87   | 1137.72 |                    |

ALL ELEVATIONS ARE AT BOTTOM OF BOTTOM FLANGE



NOTE: WINGWALL REINFORCEMENT NOT SHOWN FOR CLARITY.  
FOR WINGWALL REINFORCEMENT, SEE SHEET 26.

**PRECAST ABUTMENT NO. 1 ELEVATION**

SCALE: 3/8" = 1'-0"

**NOTES**

- USE 24" GALVANIZED CORRUGATED STEEL PIPE FOR PILE POCKETS CONFORMING TO SUBSECTION 711.01.
- FORM TOP 6" WITH REMOVABLE FORM TO ELIMINATE EXPOSED CORRUGATED STEEL ON THE TOP OF THE ABUTMENT.
- 4" GALVANIZED CORRUGATED STEEL PIPE TO CONFORM TO SUBSECTION 711.01.

**NOTE:**

- NF = NEAR FACE
- FF = FAR FACE
- EF = EACH FACE
- ▲ = CUT TO FIT IN FIELD
- 3" CLEAR, UNLESS OTHERWISE SPECIFIED ON THE PLANS.
- 2'-2" BAR LAP UNLESS OTHERWISE SPECIFIED ON THE PLANS.

**LEGEND**

- SPECIAL PROVISION (HIGH PERFORMANCE CONCRETE, RAPID SET) (FPQ)



PROJECT NAME: WARREN  
PROJECT NUMBER: BRP 013-4(32)

FILE NAME: z10b424abutdt1s.dgn  
PROJECT LEADER: R. YOUNG  
DESIGNED BY: D. KULL  
ABUTMENT NO. 1 PRECAST DETAILS

PLOT DATE: 03-OCT-2013  
DRAWN BY: S. MERKWAN  
CHECKED BY: T. KENDRICK  
SHEET 23 OF 42