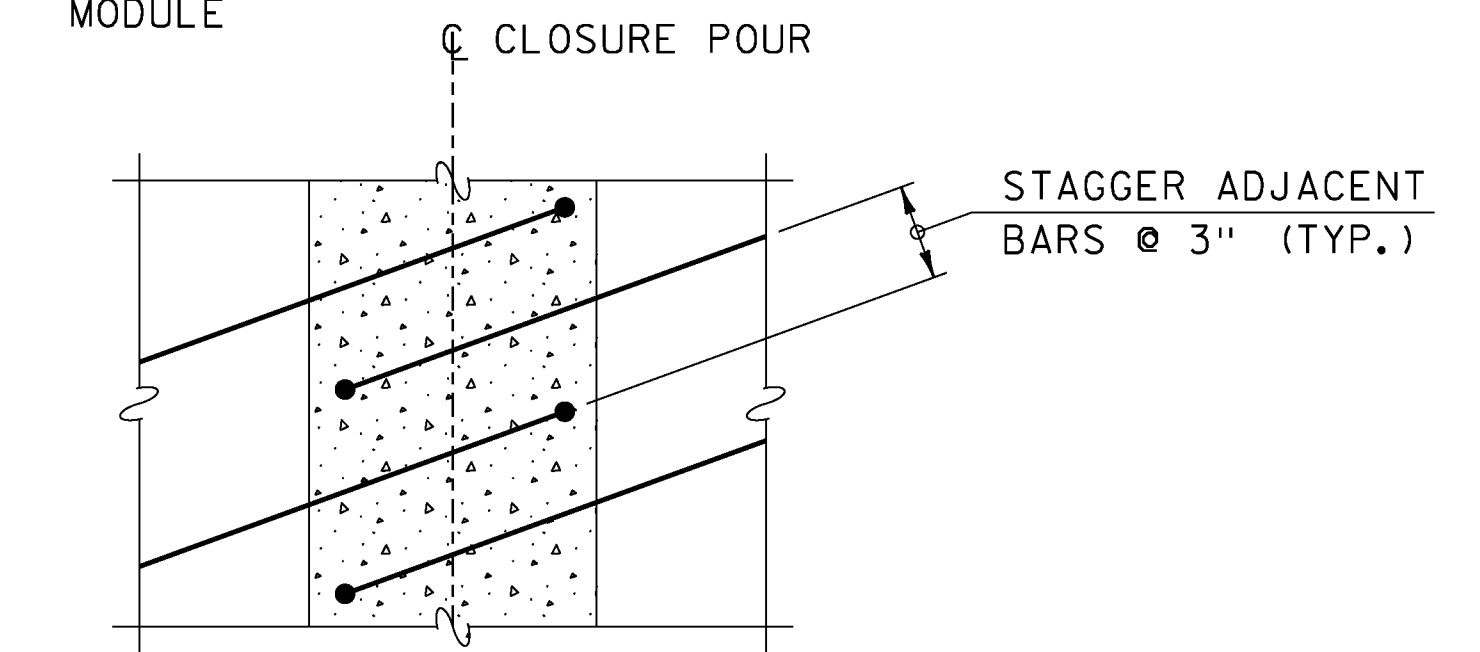


\*\* 1 1/2" TYPE IVS OVER 1 1/2" TYPE IVS

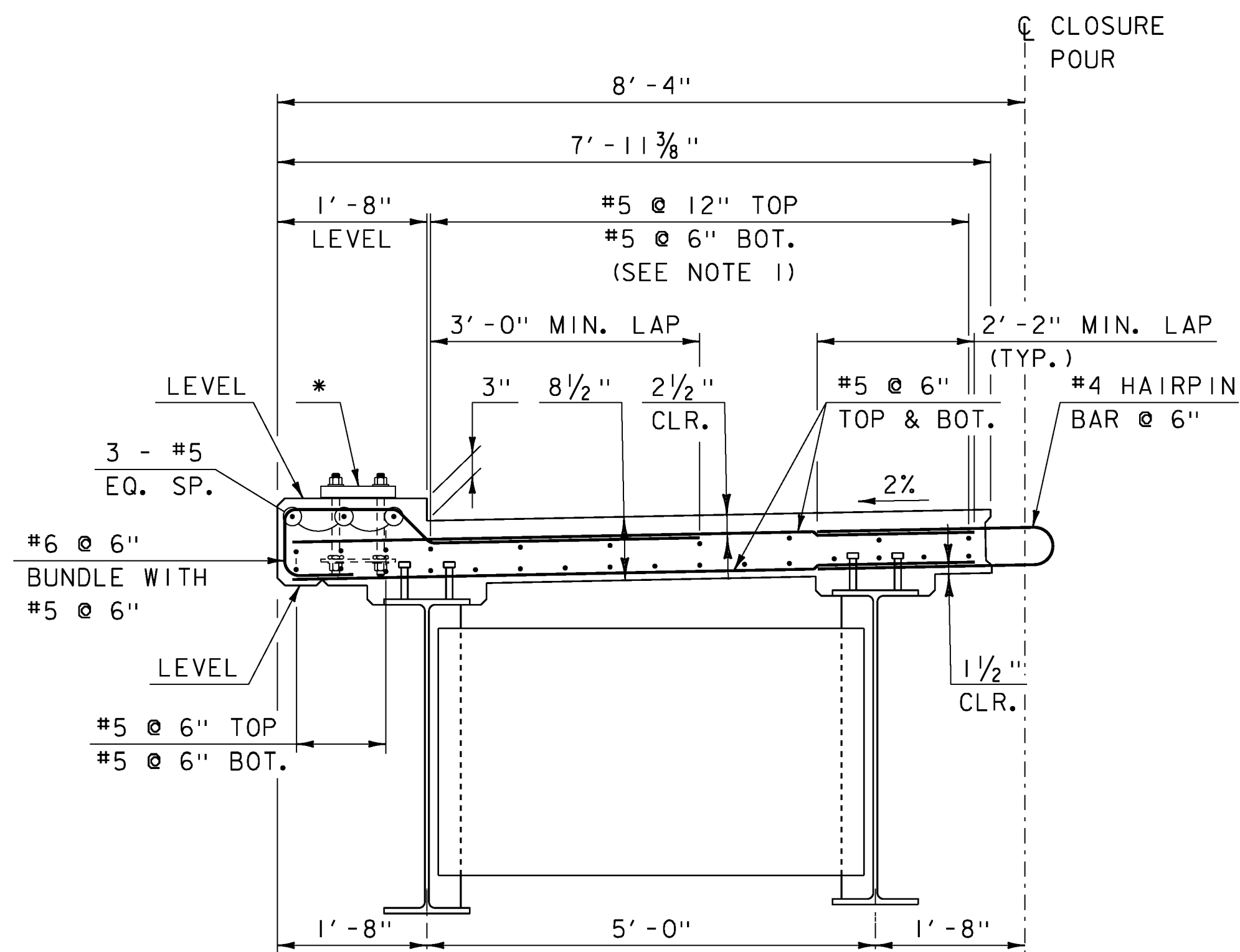
**DECK TYPICAL SECTION**

SCALE: 1/2" = 1'-0"



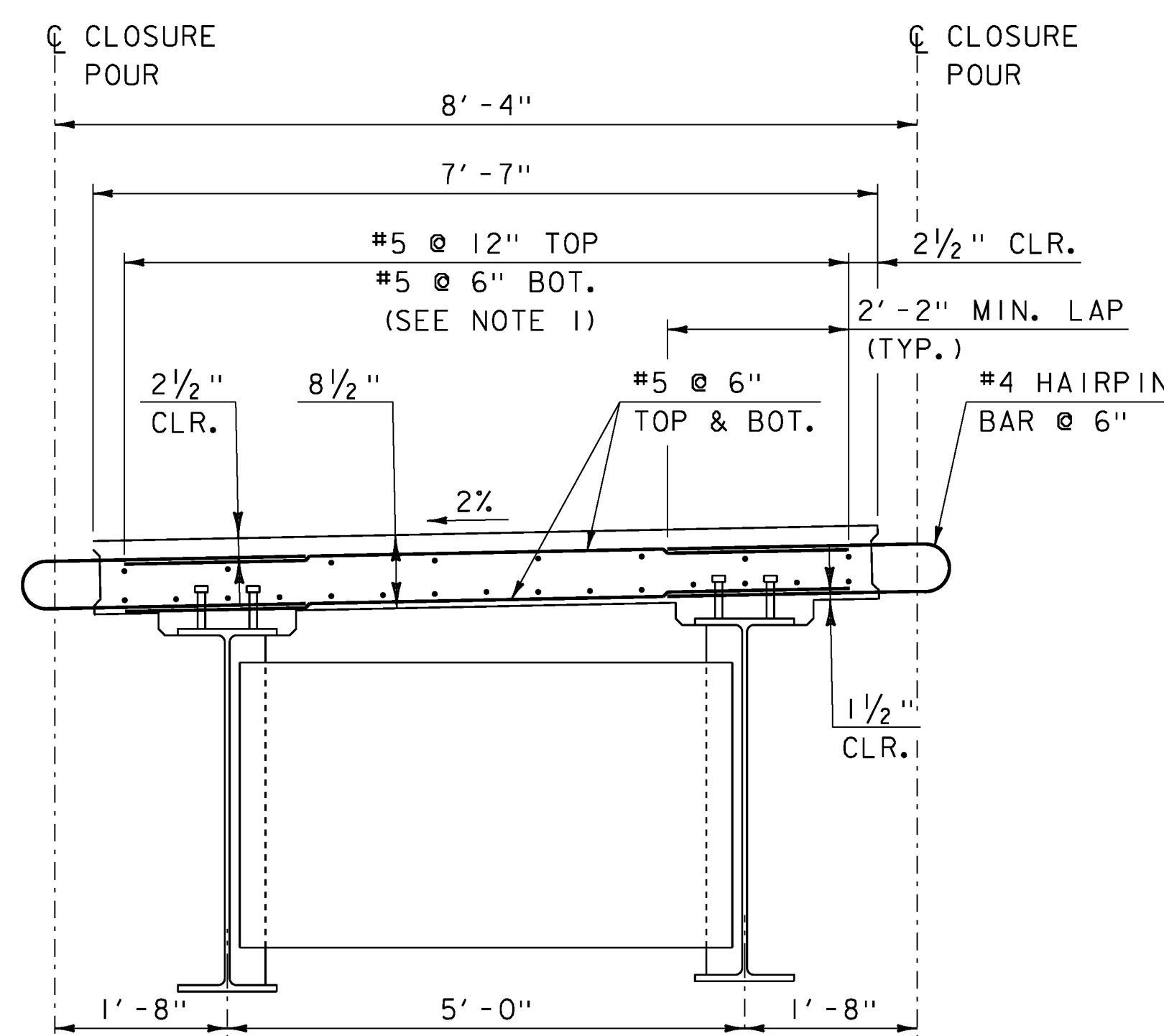
**CONNECTION DETAIL PLAN**

SCALE: 2" = 1'-0"



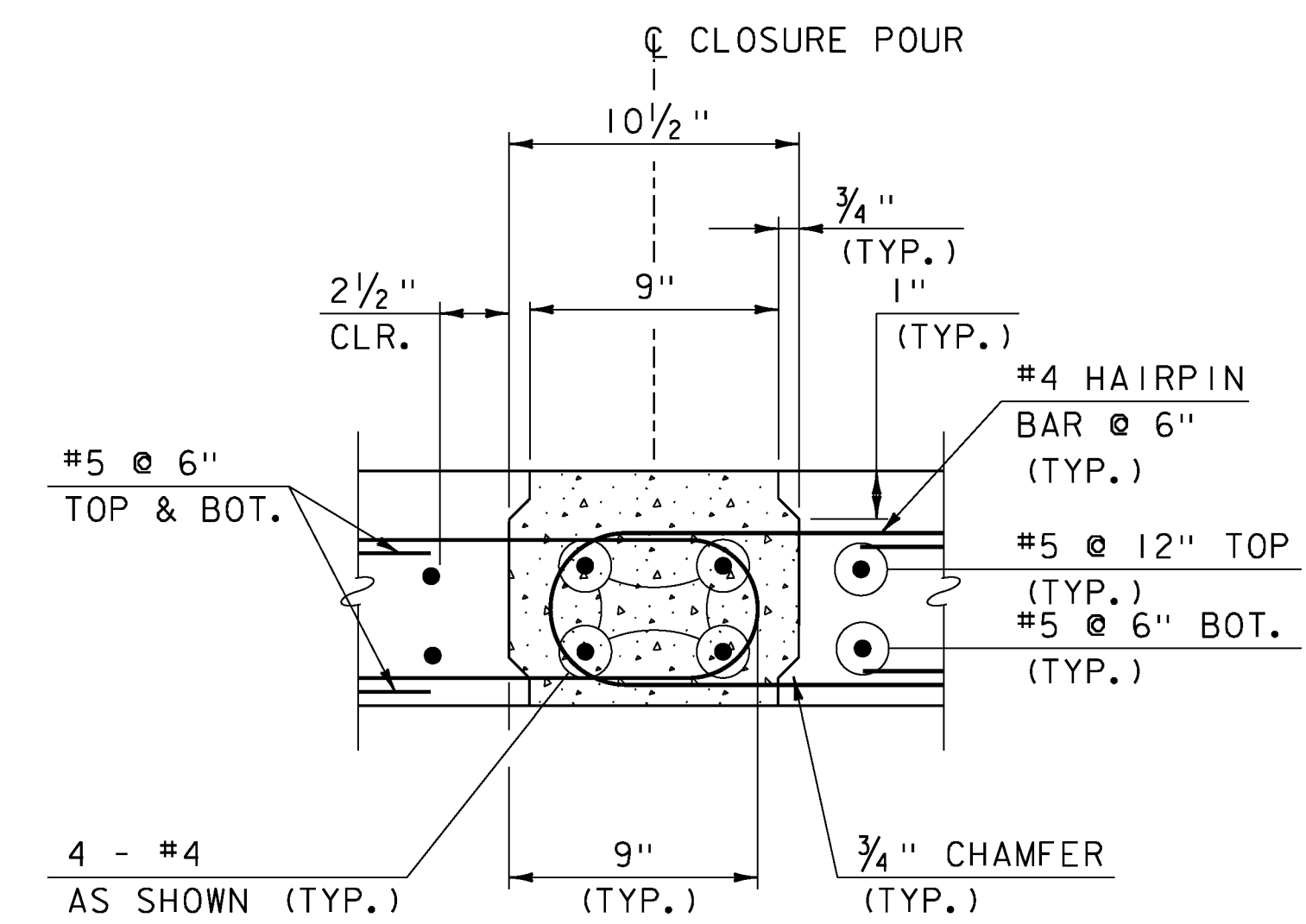
**EXTERIOR MODULE DETAIL**

SCALE: 3/4" = 1'-0"



**INTERIOR MODULE DETAIL**

SCALE: 3/4" = 1'-0"



**CONNECTION DETAIL SECTION**

SCALE: 2" = 1'-0"

**NOTES**

1. MINIMUM LONGITUDINAL LAP SPLICE IS 1'-9"
2. TRANSVERSE REINFORCING ORIENTED WITH  $\phi$  BEARING. STAGGER BARS BETWEEN ADJACENT PBU'S.

**NOTE:**

- NF = NEAR FACE
- FF = FAR FACE
- EF = EACH FACE
- ▲ = CUT TO FIT IN FIELD
- 3" CLEAR, UNLESS OTHERWISE SPECIFIED ON THE PLANS.

\* BRIDGE RAIL ANCHORAGE SHOWN. ADJUST DECK REINFORCEMENT AS NECESSARY TO AVOID CONFLICT.

PROJECT NAME: WARREN  
PROJECT NUMBER: BRF 013-4(32)

FILE NAME: z10b424sup+typ.dgn  
PROJECT LEADER: R. YOUNG  
DESIGNED BY: D. KULL  
BRIDGE TYPICAL SECTIONS

PLOT DATE: 03-OCT-2013  
DRAWN BY: P. DUSTIN  
CHECKED BY: T. KENDRICK  
SHEET 19 OF 42

