

GPS CONTROL POINTS

HVCTRL #1

TWIN RIVER AZ
 N = 576661.660
 E = 1546135.820
 ELEV. = 1089.47

GENERAL LOCATION, WARREN, VERMONT. TO REACH FROM THE INTERSECTION OF VERMONT ROUTES 100 AND 17 IN WAITSFIELD GO SOUTH ALONG ROUTE 100 FOR 7.35 MI (11.83 KM) TO THE MARK ON THE LEFT. THE MARK IS SET FLUSH WITH THE GROUND SURFACE IN THE TOP OF A 30 CM DIAMETER CONCRETE MONUMENT SET 1.3 M (4.3 FT) DEEP. IT IS 4.7 M (15.4 FT) EAST OF AND ABOUT 0.5 M (1.6 FT) HIGHER THAN THE EAST EDGE OF PAVEMENT OF ROUTE 100, 7.2 M (23.6 FT) WEST THE CENTERLINE OF A GRAVEL ROAD, 9.2 M (30.2 FT) NORTH OF POLE NO. 119, AND 5.2 M (17.1 FT) NORTH OF A 15 CM WHITE BIRCH AND A FIBERGLASS WITNESS POST.

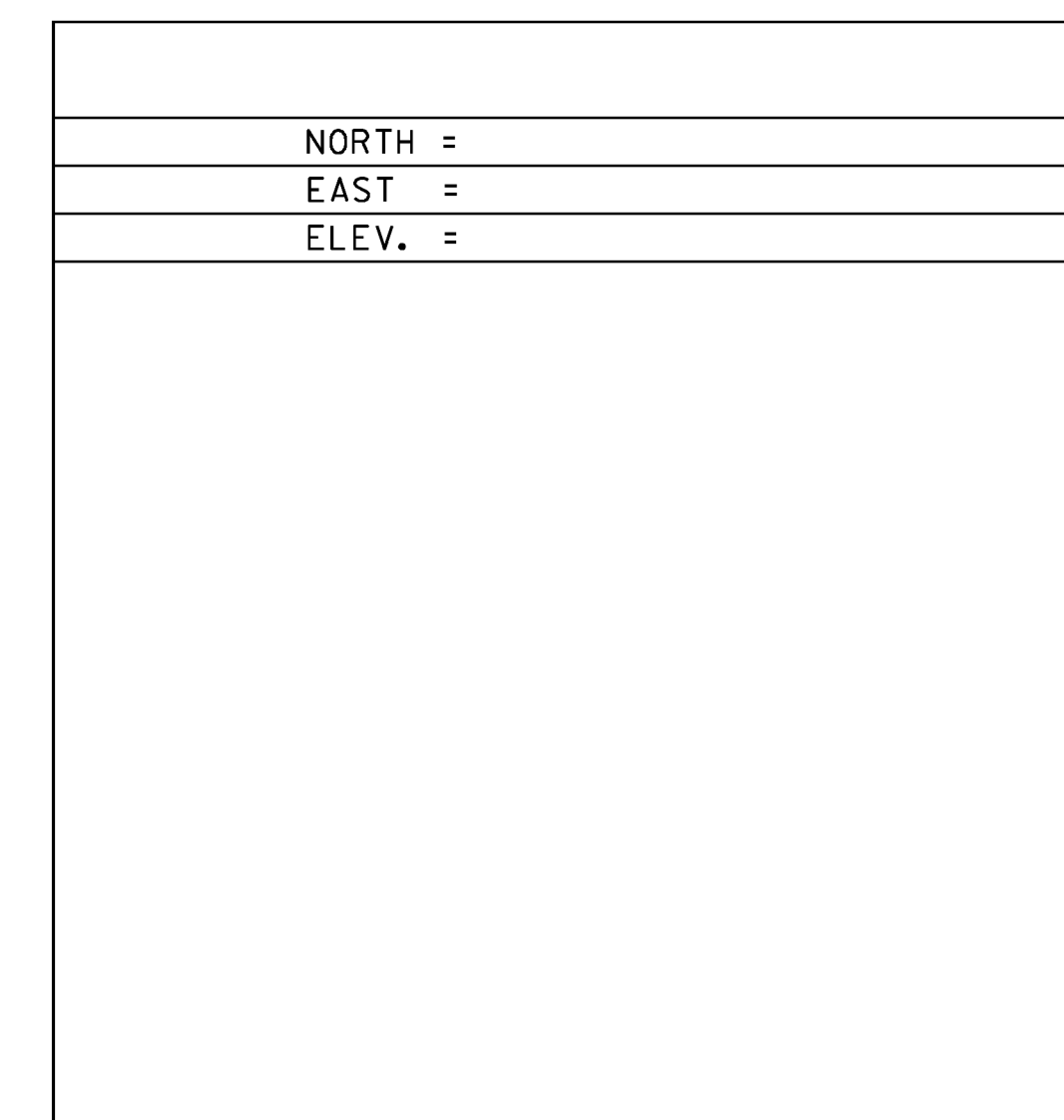
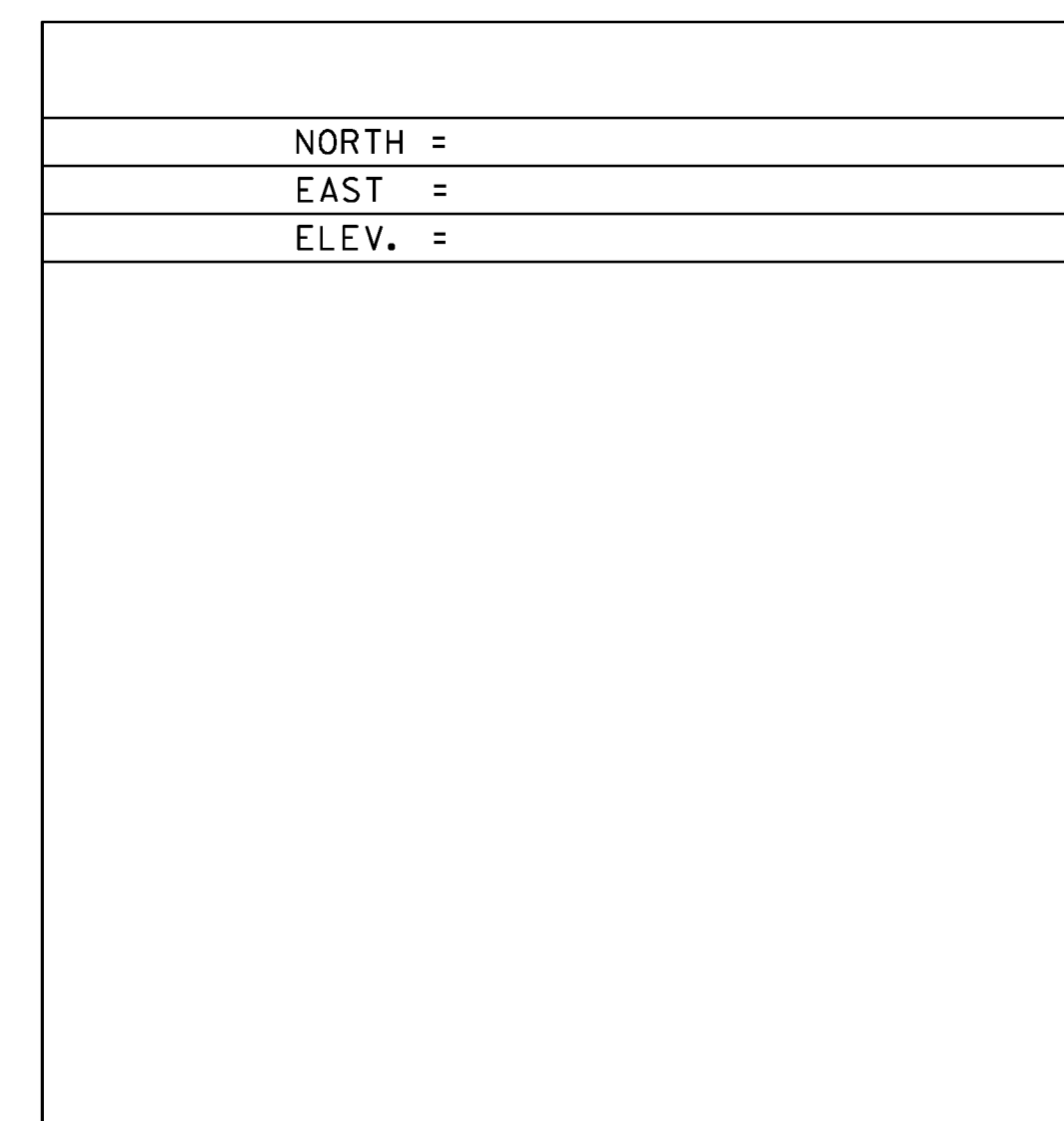
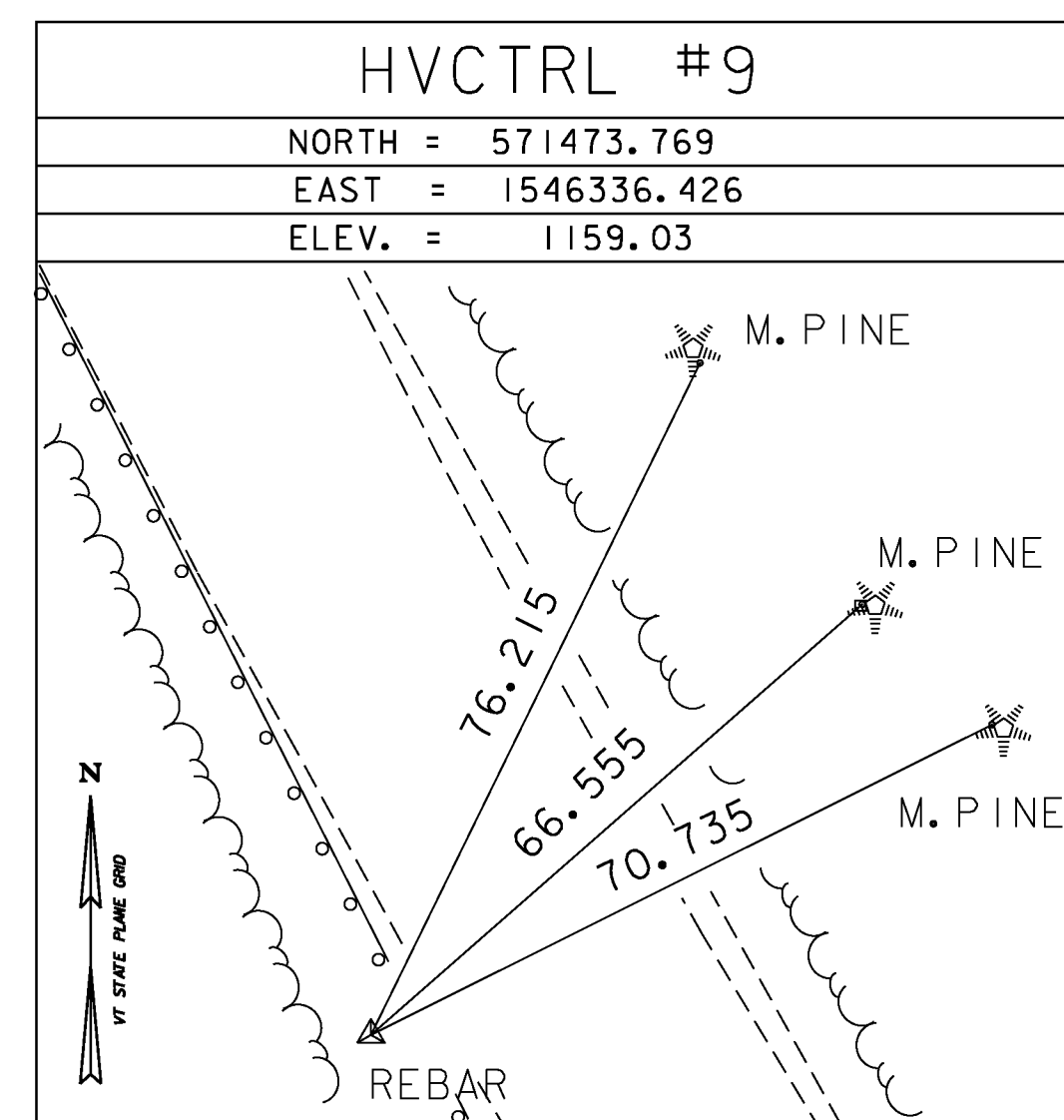
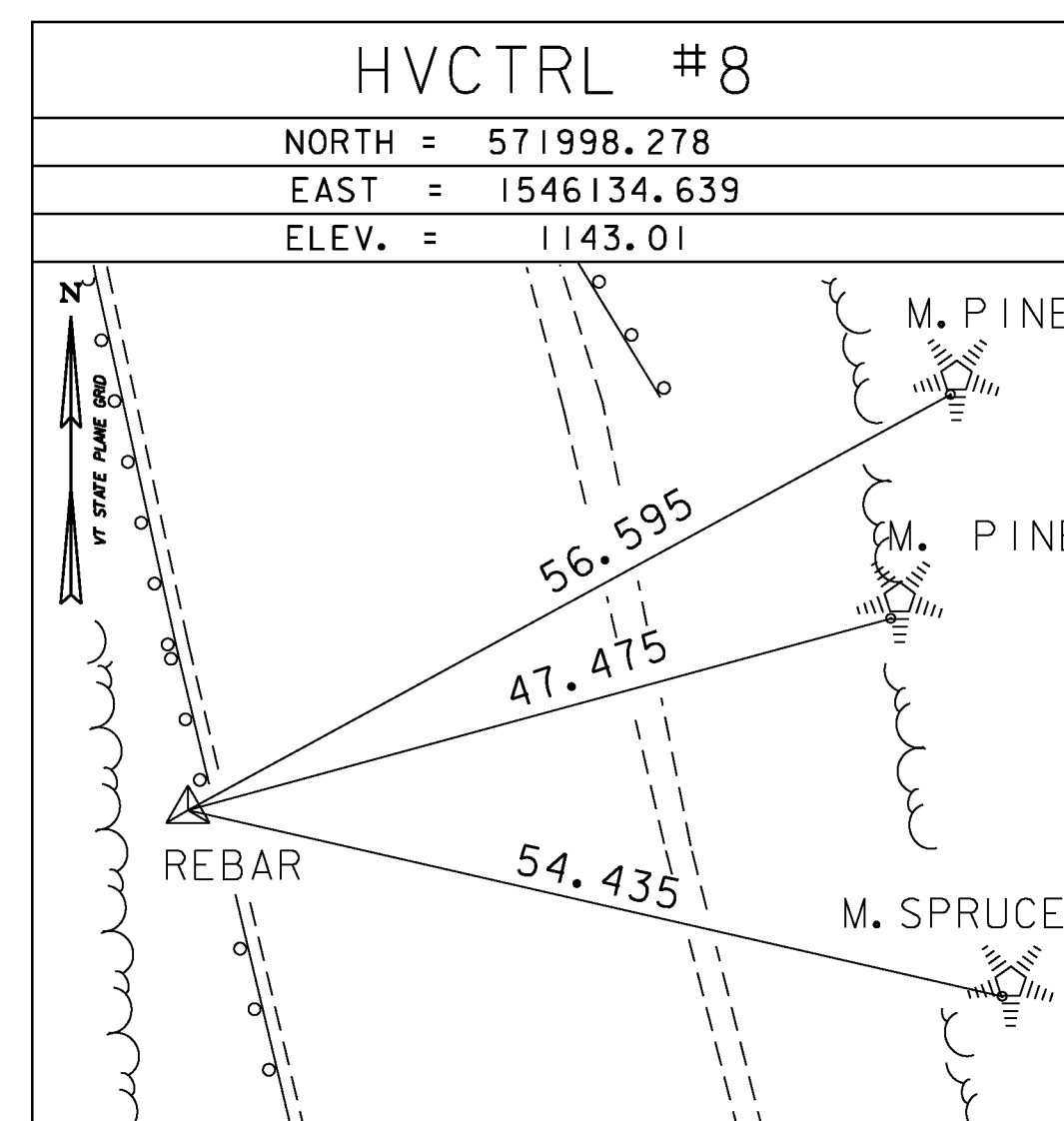
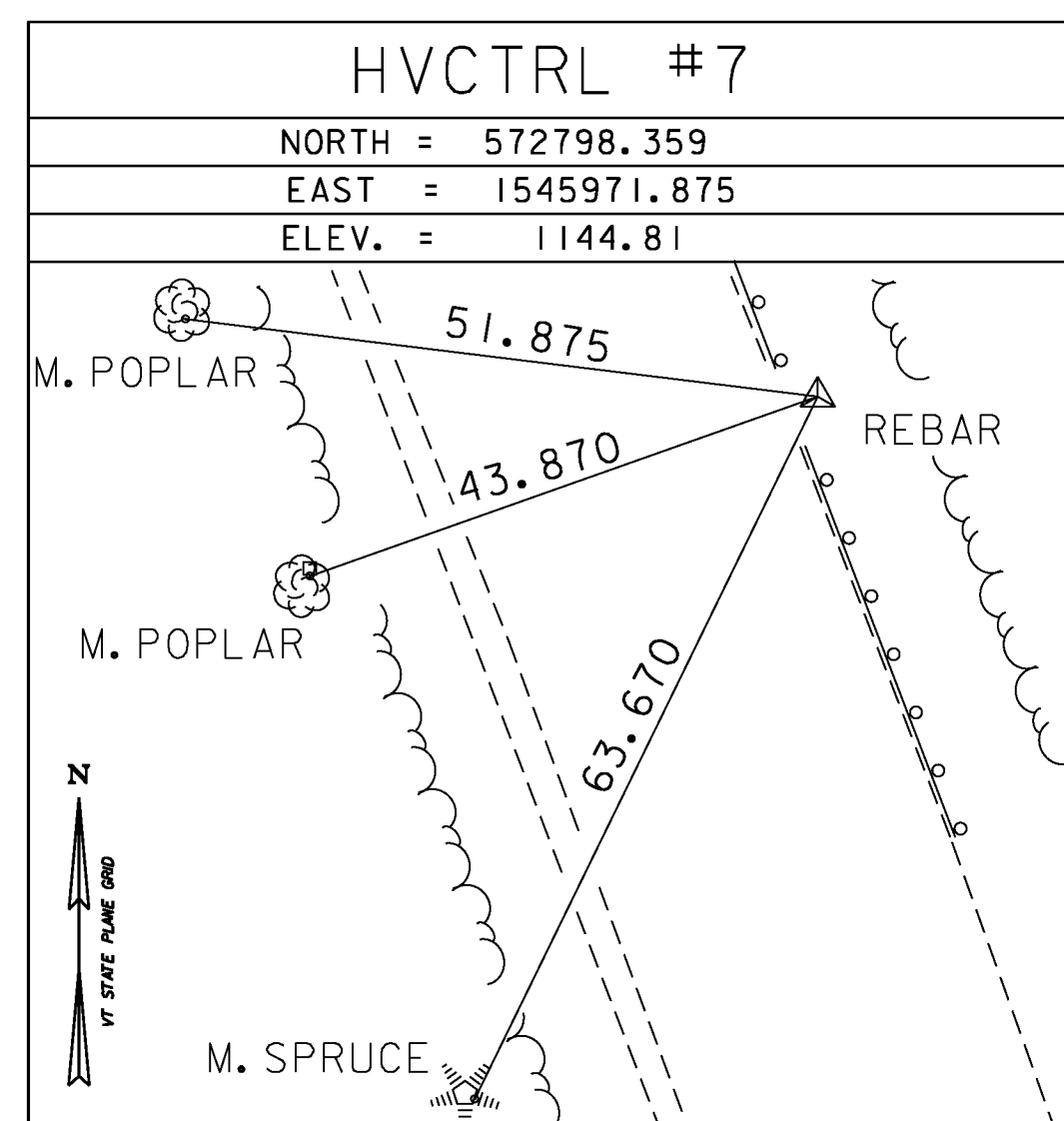
HVCTRL #2

TWIN RIVER
 N = 575426.060
 E = 1546006.840
 ELEV. = 1084.41

GENERAL LOCATION, WARREN, VERMONT. TO REACH FROM THE INTERSECTION OF VERMONT ROUTES 100 AND 17 IN WAITSFIELD GO SOUTH ALONG ROUTE 100 FOR 7.6 MI (12.2 KM) TO THE MARK ON THE RIGHT. THE MARK IS SET FLUSH WITH THE GROUND SURFACE IN THE TOP OF A 30 CM DIAMETER CONCRETE MONUMENT SET 1.4 M (4.6 FT) DEEP. IT IS 3.1 M (10.2 FT) WEST OF AND ABOUT 0.5 M (1.6 FT) LOWER THAN THE WEST EDGE OF PAVEMENT OF ROUTE 100, 17.0 M (55.8 FT) OF POLE NO. 123, 13.7 M (44.9 FT) WEST OF MILE MARKER 1000/1217/0131, 29.0 M (95.1 FT) NORTH OF THE CENTERLINE OF A PAVED DRIVE AND 3.1 M (10.2 FT) EAST OF A FIBERGLASS WITNESS POST.

* DESCRIPTION PROVIDED BY VERMONT AGENCY OF TRANSPORTATION GEODETIC SURVEY UNIT

TRAVERSE TIES



* MAIN TRAVERSE COMPLETED: FEB. 14, 2002 BY R. GILMAN, P. WINTERS, & D. BREER

ALIGNMENT COORD

ALIGNMENT COORDINATES			
VT ROUTE 100			
	STATION	NORTHING	EASTING
PC	1+00.00	571847.9800	1546194.0104
PT	3+06.43	572047.1222	1546140.0849
POE	7+00.00	572432.3768	1546059.6208
CHANNEL			
POB	50+00.00	572055.0399	1546066.1947
POE	52+50.00	572264.2242	1546203.0958

CURVE (1)
 DELTA = 6°42'32.57" RT.
 D = 3°15'00"
 R = 1762.95'
 T = 103.33'
 L = 206.43'
 E = 3.03'

DATUM	
VERTICAL	NAVD 88
HORIZONTAL	NAD 83 (96)
ADJUSTMENT	Compass



PROJECT NAME:	WARREN	PLOT DATE:	03-OCT-2013
PROJECT NUMBER:	BRF 013-4(32)	DRAWN BY:	R. BULLOCK
FILE NAME:	z10b424tie.dgn	DESIGNED BY:	VTRANS
PROJECT LEADER:	R. YOUNG	CHECKED BY:	T. KENDRICK
TIE SHEET		SHEET	8 OF 42