

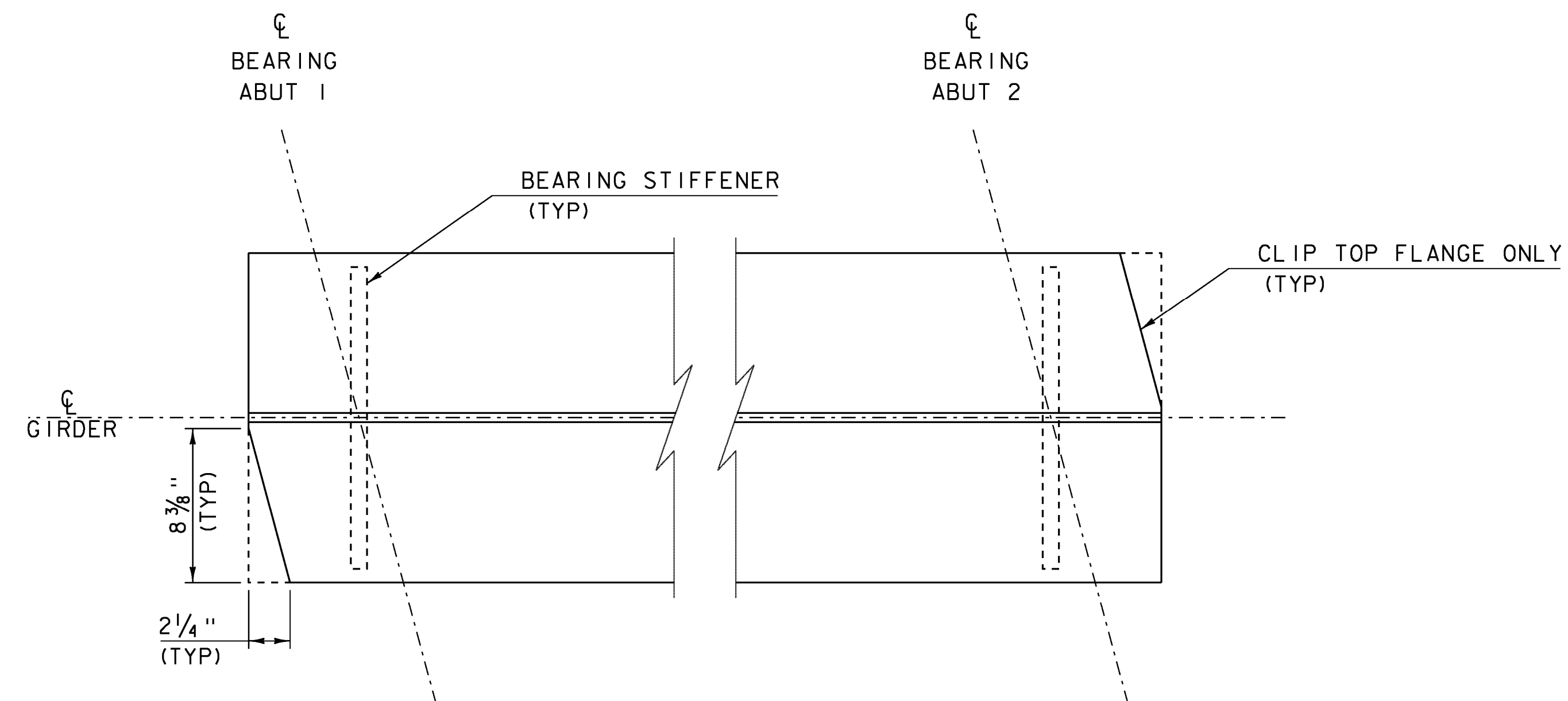
CAMBER DIAGRAM

NOT TO SCALE

	0	0.1L	0.2L	0.3L	0.4L	0.5L	0.6L	0.7L	0.8L	0.9L	L
Steel Deflection	0	1/8	1/4	3/8	7/16	7/16	7/16	3/8	1/4	1/8	0
Slab & Super Deflection	0	3/4	1 7/16	1 15/16	2 1/4	2 3/8	2 1/4	1 15/16	1 7/16	3/4	0
Total Deflection	0	7/8	1 11/16	2 5/16	2 11/16	2 13/16	2 11/16	2 5/16	1 11/16	7/8	0
Residual Camber	0	3/8	5/8	13/16	15/16	1	15/16	13/16	5/8	3/8	0
Total Camber	0	1 1/4	2 5/16	3 1/8	3 5/8	3 13/16	3 5/8	3 1/8	2 5/16	1 1/4	0

CAMBER AND DEFLECTION

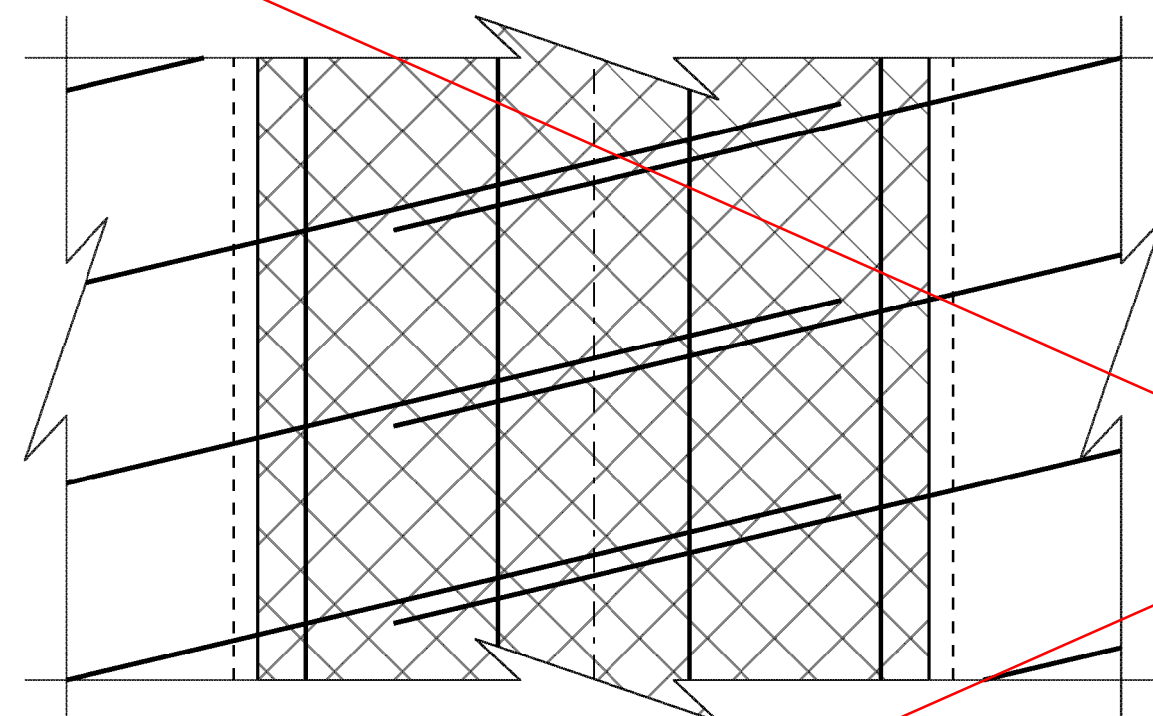
(INCHES)



TOP FLANGE CLIP DETAIL

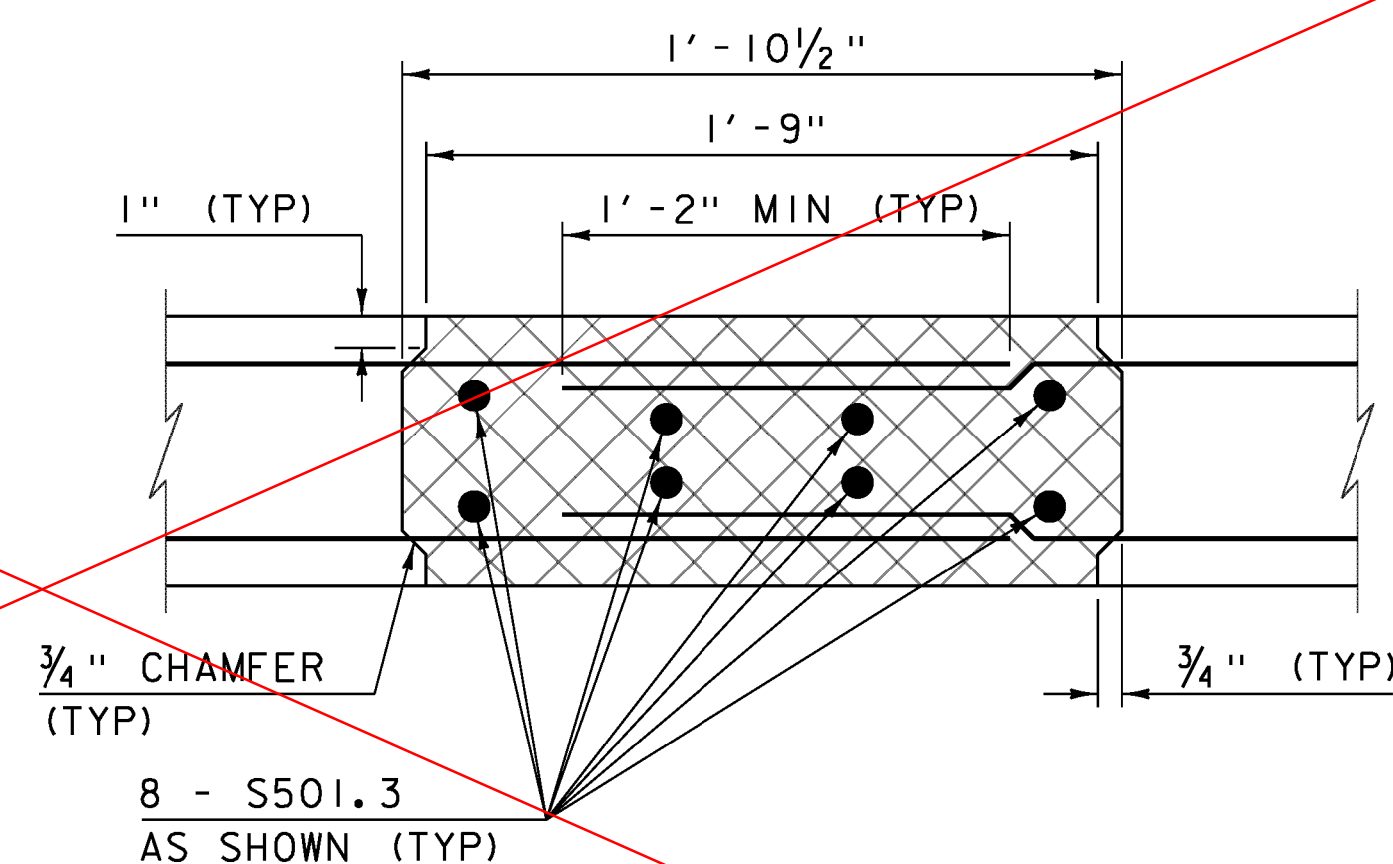
SCALE 1" = 2'-0"

ELIMINATED - DECK CONSTRUCTION FULL WIDTH



CLOSURE POUR DETAIL PLAN

SCALE 2" = 1'-0"



CLOSURE POUR DETAIL SECTION

SCALE 2" = 1'-0"

ELIMINATED

PHASED DECK CONSTRUCTION NOTES:

1. PHASE 2 DECK CONSTRUCTION INVOLVES ONLY TWO GIRDERS. THE CONTRACTOR SHALL DETERMINE IF ADDITIONAL TEMPORARY BRACING IS NEEDED TO PREVENT LATERAL MOVEMENT OF THE GIRDERS DURING THE PHASE 2 DECK PLACEMENT. IF USED, TEMPORARY BRACING MUST BE DESIGNED TO ALLOW FOR FREEDOM OF VERTICAL MOVEMENT SO THAT GIRDER DEFLECTION DUE TO THE DECK CONCRETE WILL OCCUR AS PREDICTED.
2. FOR PHASE 2 DECK CONSTRUCTION, ALL FORMWORK AND THE FINISHING MACHINE MUST BE COMPLETELY SUPPORTED BY THE PHASE 2 GIRDERS. THE PHASE 1 STRUCTURE SHALL NOT BE USED TO SUPPORT ANY PORTION OF THE FORMWORK OR FINISHING MACHINE.
3. DIAPHRAGMS BETWEEN GIRDERS 2 AND 3 ARE TO BE INSTALLED AFTER THE PHASE 2 DECK CURE PERIOD IS COMPLETE AND BEFORE THE DECK CLOSURE POUR.
4. REINFORCING STEEL IN THE CLOSURE POUR SHALL NOT BE TIED UNTIL AFTER THE PHASE 2 DECK CURE PERIOD IS COMPLETE.
5. FORMWORK FOR SURFACES ON THE DECK THAT WILL BE IN CONTACT WITH THE CLOSURE POUR SHALL BE TREATED WITH CONCRETE SURFACE RETARDER, OR SIMILAR, TO PROVIDE A ROUGHENED SURFACE. THE ROUGHENED SURFACES SHALL BE POWER WASHED WITH WATER PRIOR TO THE CLOSURE POUR.
6. THE METHOD OF FORMING THE DECK CLOSURE POUR SHALL BE DETERMINED BY THE CONTRACTOR. THE FORMS SHALL BE REMOVABLE AND ABLE TO ACCOMMODATE DIFFERENTIAL CAMBER. FORM SUPPORTS SHALL NOT BE ATTACHED TO ANY PART OF THE STRUCTURE BY DRILLING OR SIMILAR MEANS.

△ -SHEET ADDED 4/8/2014.
REPLACES SHEET 26 IN CONTRACT PLANS.

PROJECT NAME: MARLBORO	PLOT DATE: 08-APR-2014
PROJECT NUMBER: BRF 010-1(43)	DRAWN BY: K. FRIEDLAND
FILE NAME: sl0b414sup.dgn	CHECKED BY: J. SALVATORI
PROJECT LEADER: K. HIGGINS	SHEET 26 OF 50
DESIGNED BY: R. KLINEFELTER	
CAMBER & DEFLECTION	

