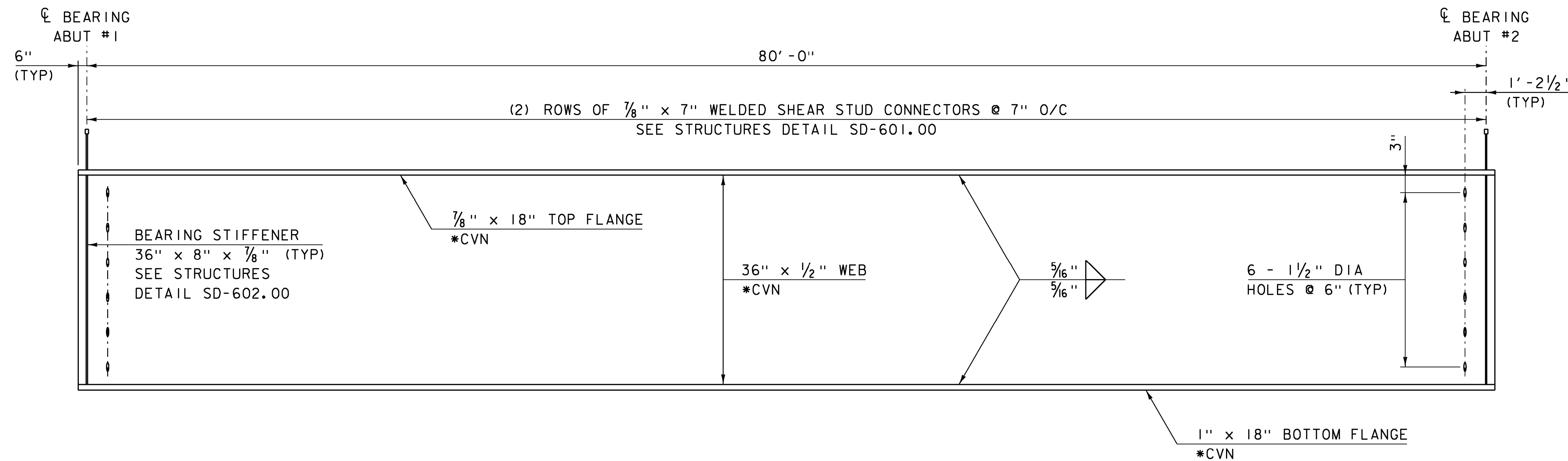


FRAMING PLAN

SCALE 1/4" = 1'-0"



TYPICAL GIRDER ELEVATION

HORIZONTAL SCALE 1/4" = 1'-0"
 VERTICAL SCALE 1" = 1'-0"

NOTES:

1. *CVN DENOTES THAT CHARPY V-NOTCH TEST IS REQUIRED.
2. ALL STEEL SHALL BE GRADE 50W.
3. PLACE DRIP PLATE ON LOW END OF EXTERIOR GIRDERS. SEE STRUCTURES DETAIL SD-601.00.
4. ~~BOLT HOLES SHALL BE OMITTED IN THE CONNECTION PLATES ON THE LEFT SIDE OF GIRDER 3. AFTER THE DIAPHRAGMS HAVE BEEN BOLTED TO GIRDER 2, BOLT HOLES IN THE GIRDER 3 CONNECTION PLATES SHALL BE FIELD DRILLED FOR PROPER FITUP.~~

ELIMINATED

△ -SHEET ADDED 4/8/2014.
 REPLACES SHEET 25 IN CONTRACT PLANS.

PROJECT NAME: MARLBORO	
PROJECT NUMBER: BRF 010-I(43)	
FILE NAME: sl0b414fra.dgn	PLOT DATE: 08-APR-2014
PROJECT LEADER: K. HIGGINS	DRAWN BY: R. KLINEFELTER
DESIGNED BY: R. KLINEFELTER	CHECKED BY: J. SALVATORI
FRAMING PLAN & GIRDER ELEVATION	SHEET 25 OF 50

