

REHAB. Dis. CBs OR MHS, CLASS I OR II
 STA. 153+04, RT
 STA. 155+48, RT
 STA. 157+68, RT

RELOCATE MAILBOX, SINGLE SUPPORT
 STA. 153+07, LT
 STA. 153+10, LT
 STA. 153+13, LT
 STA. 157+19, LT

RELOCATE MAILBOX, MULTIPLE SUPPORT
 STA. 155+46, LT
 STA. 157+63, LT

DURABLE 4 INCH WHITE LINE
 (ALL LINES WILL INCLUDE EDGE LINE BREAKS AND
 RADI FOR SIDE ROADS)
 STA. 152+50 TO 158+50, SOLID LT & RT
 STA. 155+75, SOLID RT (EDGELINES, BIG HOLLOW ROAD TH-5)

DURABLE 4 INCH YELLOW LINE
 (ALL LINES WILL INCLUDE C BREAKS FOR SIDE ROADS)
 STA. 152+50 TO 158+50, SOLID LT & RT
 STA. 155+75, DOUBLE SOLID RT (BIG HOLLOW ROAD TH-5)

DURABLE 24 INCH STOP BAR
 STA. 155+75, RT (BIG HOLLOW ROAD TH-5)

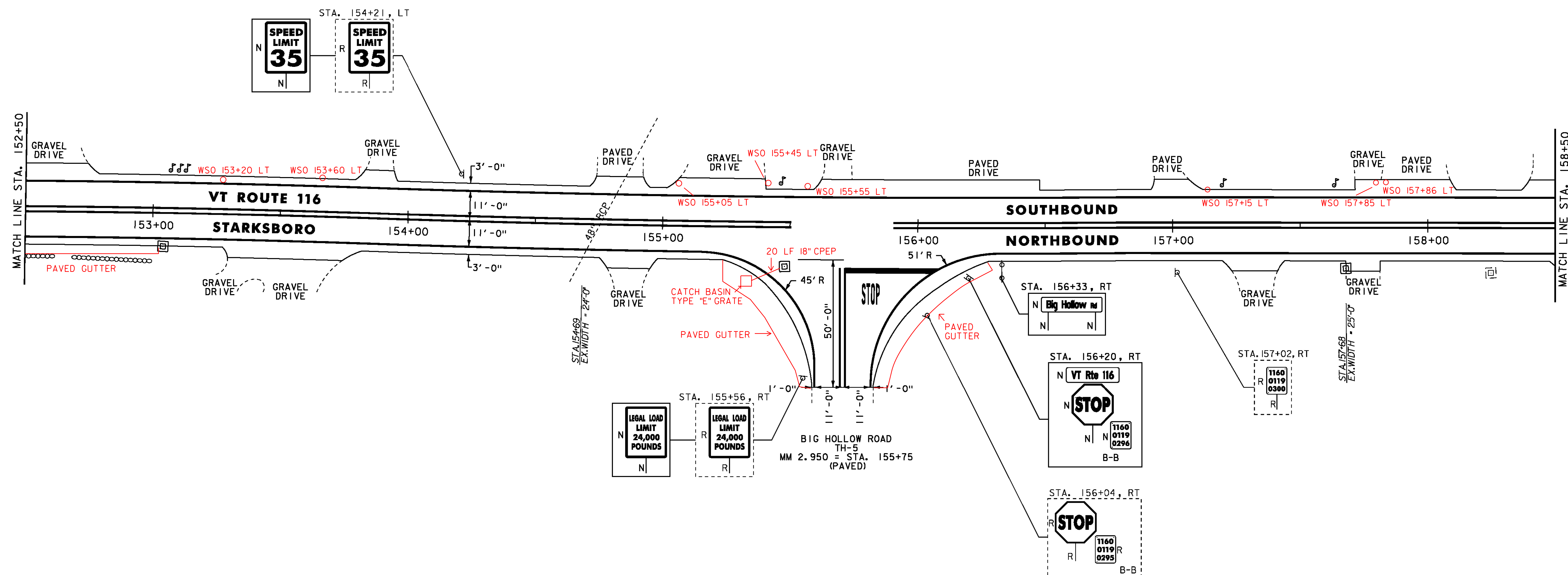
DURABLE LETTER OR SYMBOL
 STA. 155+75, RT - "STOP" (BIG HOLLOW ROAD TH-5)

TEMPORARY 4 INCH WHITE LINE, PAINT
 (ALL LINES WILL INCLUDE EDGE LINE BREAKS AND
 RADI FOR SIDE ROADS)
 STA. 152+50 TO 158+50, SOLID LT & RT
 STA. 155+75, SOLID RT (EDGELINES, BIG HOLLOW ROAD TH-5)

TEMPORARY 4 INCH YELLOW LINE, PAINT
 (ALL LINES WILL INCLUDE C BREAKS FOR SIDE ROADS)
 STA. 152+50 TO 158+50, SOLID LT & RT
 STA. 155+75, DOUBLE SOLID RT (BIG HOLLOW ROAD TH-5)

TEMPORARY 24 INCH STOP BAR, PAINT
 STA. 155+75, RT (BIG HOLLOW ROAD TH-5)
 TEMPORARY LETTER OR SYMBOL, PAINT
 STA. 155+75, RT - "STOP" (BIG HOLLOW ROAD TH-5)

REMOVING SIGNS
 AS SHOWN - 5



NOTES:
 1. FOR LEGENDS, SEE SHEET 21.
 2. ALL EXISTING SIGNS NOT SHOWN SHALL BE RETAINED.
 3. SEE QUANTITY SHEETS FOR DURABLE PAVEMENT MARKING OPTIONS.

NOT TO SCALE

PROJECT LAYOUT SHEET #8



PROJECT NAME: STARKSBORO-HINESBURG	PLOT DATE: 28-NOV-2012
PROJECT NUMBER: STP 2930(I)	DRAWN BY: STANTEC
FILE NAME: p10b266.dgn	CHECKED BY: MCF
PROJECT LEADER: JLL	SHEET 28 OF 119
DESIGNED BY: STANTEC	
IPARM FILE: p10b266i08.i	