

RELOCATE MAILBOX, SINGLE SUPPORT
 STA. 178+27, LT
 STA. 178+32, LT

RELOCATE MAILBOX, MULTIPLE SUPPORT
 STA. 175+76, LT

DURABLE 4 INCH WHITE LINE
 (ALL LINES WILL INCLUDE EDGE LINE BREAKS
 AND RADII FOR SIDE ROADS)
 STA. 175+50 TO 180+50, SOLID LT & RT

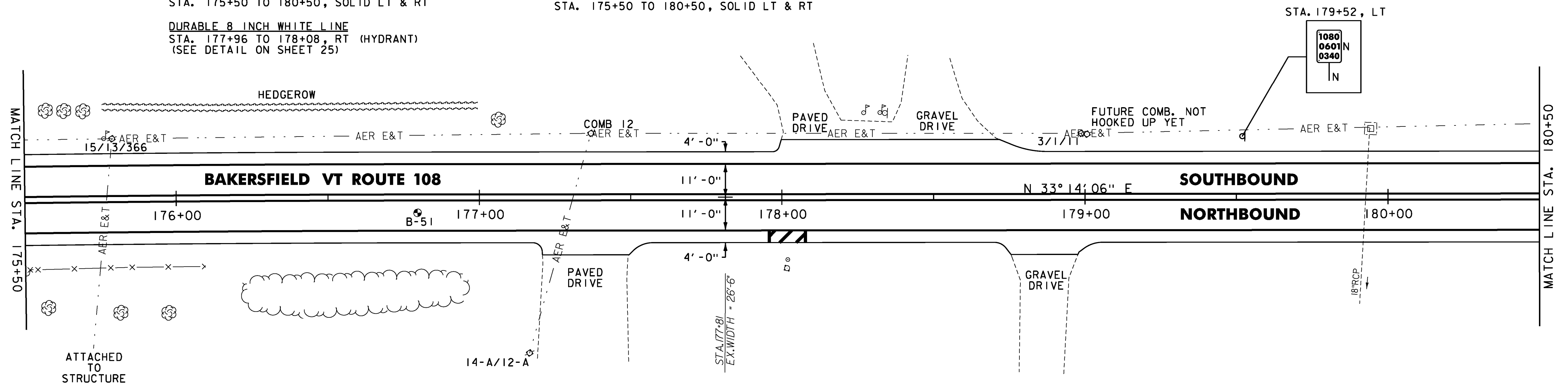
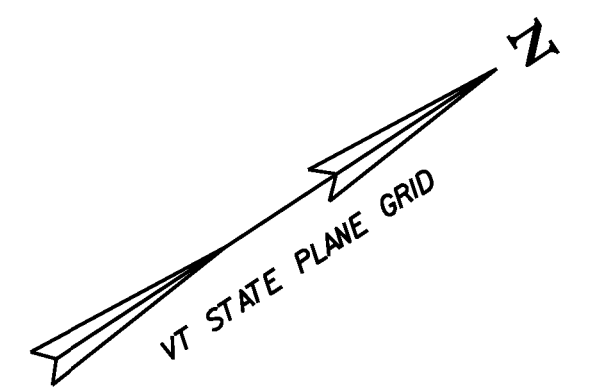
DURABLE 4 INCH YELLOW LINE
 (ALL LINES WILL INCLUDE ϕ BREAKS FOR SIDE ROADS)
 STA. 175+50 TO 180+50, SOLID LT & RT

DURABLE 8 INCH WHITE LINE
 STA. 177+96 TO 178+08, RT (HYDRANT)
 (SEE DETAIL ON SHEET 25)

TEMPORARY 4 INCH WHITE LINE, PAINT
 (ALL LINES WILL INCLUDE EDGE LINE BREAKS
 AND RADII FOR SIDE ROADS)
 STA. 175+50 TO 180+50, SOLID LT & RT

TEMPORARY 4 INCH YELLOW LINE, PAINT
 (ALL LINES WILL INCLUDE ϕ BREAKS FOR SIDE ROADS)
 STA. 175+50 TO 180+50, SOLID LT & RT

TEMPORARY 8 INCH WHITE LINE, PAINT
 STA. 177+96 TO 178+08, RT (HYDRANT)
 (SEE DETAIL ON SHEET 25)



SOIL BORING DATA			
BORING #	DEPTH (FT.)	PCC	COMMENTS
B-51	5.0'	NO	

RELOCATE MAILBOX, SINGLE SUPPORT
 STA. 183+24, LT

REHAB. DIS. CBS OR MHS, CLASS I
 STA. 183+54, LT "D1"

DURABLE 4 INCH WHITE LINE
 (ALL LINES WILL INCLUDE EDGE LINE BREAKS
 AND RADII FOR SIDE ROADS)
 STA. 180+50 TO 183+79.68, SOLID LT & RT

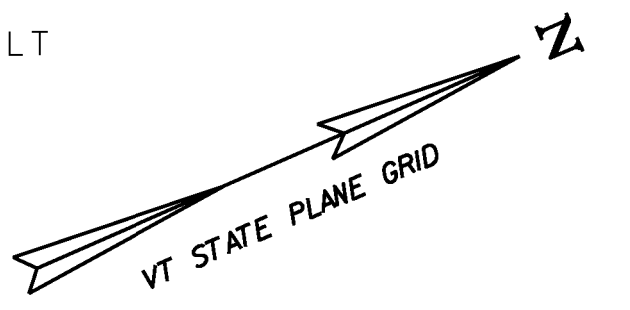
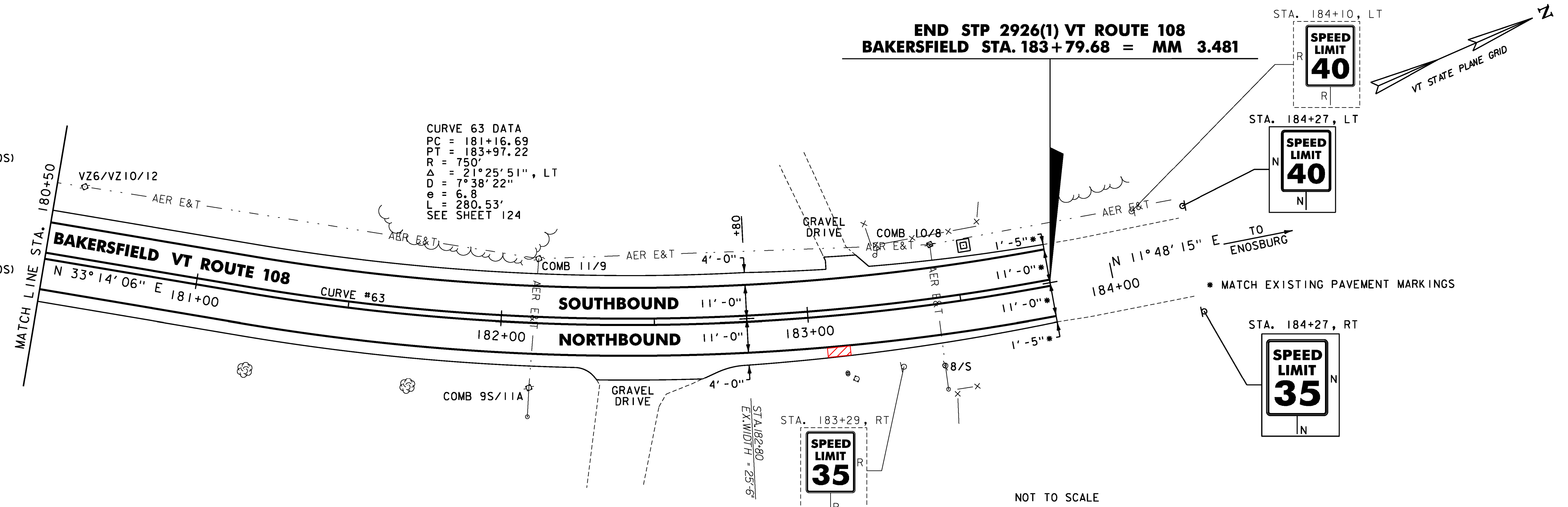
DURABLE 4 INCH YELLOW LINE
 (ALL LINES WILL INCLUDE ϕ BREAKS FOR SIDE ROADS)
 STA. 180+50 TO 183+79.68, SOLID LT & RT

TEMPORARY 4 INCH WHITE LINE, PAINT
 (ALL LINES WILL INCLUDE EDGE LINE BREAKS
 AND RADII FOR SIDE ROADS)
 STA. 180+50 TO 183+79.68, SOLID LT & RT

TEMPORARY 4 INCH YELLOW LINE, PAINT
 (ALL LINES WILL INCLUDE ϕ BREAKS FOR SIDE ROADS)
 STA. 180+50 TO 183+79.68, SOLID LT & RT

REMOVING SIGNS
 AS SHOWN - 2

**END STP 2926(1) VT ROUTE 108
 BAKERSFIELD STA. 183+79.68 = MM 3.481**



- NOTES:
- FOR LEGENDS, SEE SHEET 27.
 - ALL EXISTING SIGNS NOT SHOWN SHALL BE RETAINED.
 - DURABLE MARKINGS DETAILED ON THIS SHEET ARE OPTION BID ITEMS. SEE SHEET 14.



<p>NOT TO SCALE</p> <p>PROJECT LAYOUT SHEET #54</p>	<p>PROJECT NAME: CAMBRIDGE-BAKERSFIELD</p> <p>PROJECT NUMBER: STP 2926(1)</p>
	<p>FILE NAME: p10b258.dgn</p> <p>PROJECT LEADER: JLL</p> <p>DESIGNED BY: STANTEC</p> <p>IPARM FILE: p10b258154.i</p>
	<p>PLOT DATE: 11/15/2012</p> <p>DRAWN BY: STANTEC</p> <p>CHECKED BY: STANTEC</p> <p>SHEET 80 OF 387</p>