

**STONE FILL, TYPE I**

STA. 601+50 TO 601+60, RT  
 STA. 602+25 TO 603+75, RT  
 STA. 604+75 TO 606+50, RT

**DURABLE 4 INCH WHITE LINE**

(ALL LINES WILL INCLUDE EDGE LINE BREAKS AND RADII FOR SIDE ROADS)  
 STA. 601+50 TO 606+50, SOLID LT & RT  
 STA. 605+12, SOLID LT (EDGELINES, POLLANDER RD, TH-12)

**DURABLE 4 INCH YELLOW LINE**

(ALL LINES WILL INCLUDE Q BREAKS FOR SIDE ROADS)  
 STA. 601+50 TO 606+50, SOLID LT & RT  
 STA. 605+12, DOUBLE SOLID LT (POLLANDER RD, TH-12)

**DURABLE 24 INCH STOP BAR**

STA. 605+12, LT (POLLANDER RD, TH-12)

**DURABLE LETTER OR SYMBOL**

STA. 605+12, LT (POLLANDER RD) "STOP"

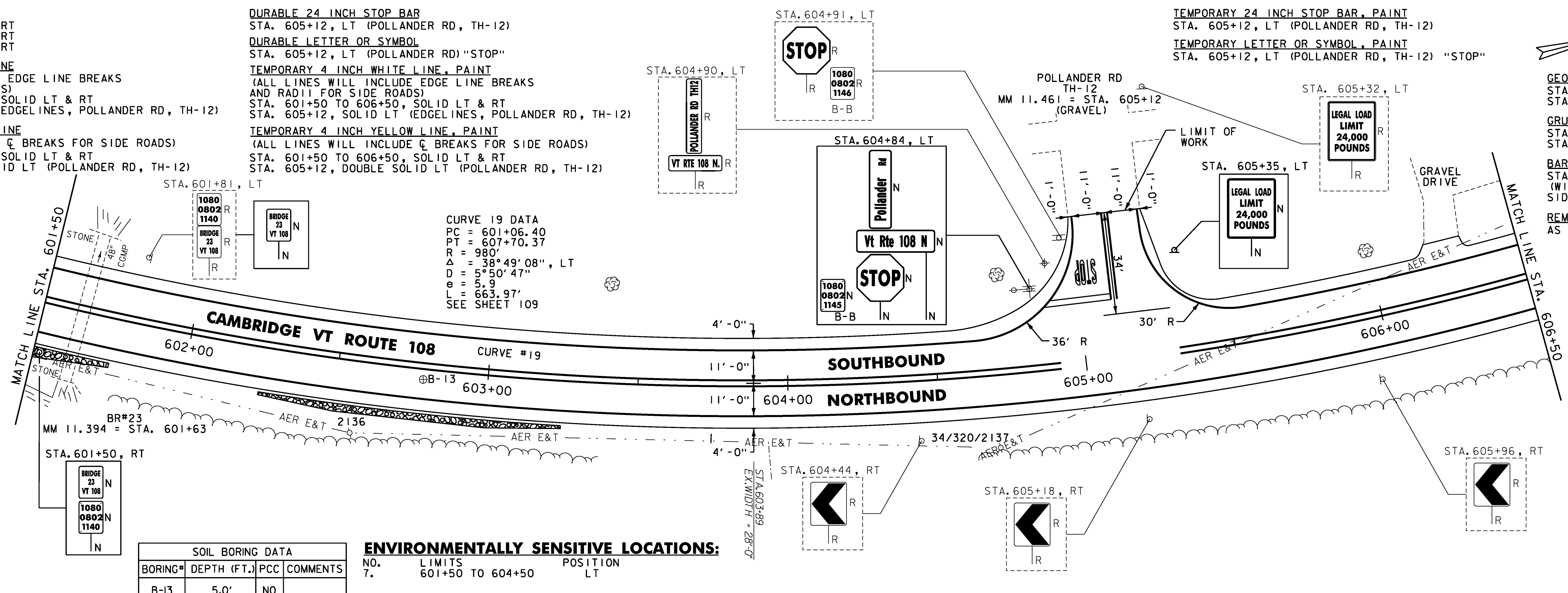
**TEMPORARY 4 INCH WHITE LINE, PAINT**

(ALL LINES WILL INCLUDE EDGE LINE BREAKS AND RADII FOR SIDE ROADS)  
 STA. 601+50 TO 606+50, SOLID LT & RT  
 STA. 605+12, SOLID LT (EDGELINES, POLLANDER RD, TH-12)

**TEMPORARY 4 INCH YELLOW LINE, PAINT**

(ALL LINES WILL INCLUDE Q BREAKS FOR SIDE ROADS)  
 STA. 601+50 TO 606+50, SOLID LT & RT  
 STA. 605+12, DOUBLE SOLID LT (POLLANDER RD, TH-12)

**CURVE 19 DATA**  
 PC = 601+06.40  
 PT = 607+70.37  
 R = 980'  
 $\Delta = 38^\circ 49' 08''$ , LT  
 D = 5° 50' 47"  
 e = 5.9  
 L = 663.97'  
 SEE SHEET 109



**ENVIRONMENTALLY SENSITIVE LOCATIONS:**

NO.	LIMITS	POSITION
7.	601+50 TO 604+50	LT

**STONE FILL, TYPE I**

STA. 606+50 TO 607+75, RT  
 STA. 606+75 TO 607+75, LT  
 STA. 608+75 TO 610+75, LT

**DURABLE 4 INCH WHITE LINE**

(ALL LINES WILL INCLUDE EDGE LINE BREAKS AND RADII FOR SIDE ROADS)  
 STA. 606+50 TO 611+50, SOLID LT & RT

**DURABLE 4 INCH YELLOW LINE**

(ALL LINES WILL INCLUDE Q BREAKS FOR SIDE ROADS)  
 STA. 606+50 TO 611+50, SOLID LT & RT

**TEMPORARY 4 INCH WHITE LINE, PAINT**

(ALL LINES WILL INCLUDE EDGE LINE BREAKS AND RADII FOR SIDE ROADS)  
 STA. 606+50 TO 611+50, SOLID LT & RT

**TEMPORARY 4 INCH YELLOW LINE, PAINT**

(ALL LINES WILL INCLUDE Q BREAKS FOR SIDE ROADS)  
 STA. 606+50 TO 611+50, SOLID LT & RT

**GEOTEXTILE UNDER STONE FILL**

STA. 606+75 TO 607+75, RT  
 STA. 606+75 TO 607+75, LT  
 STA. 608+75 TO 610+75, LT

**GRUBBING MATERIAL**

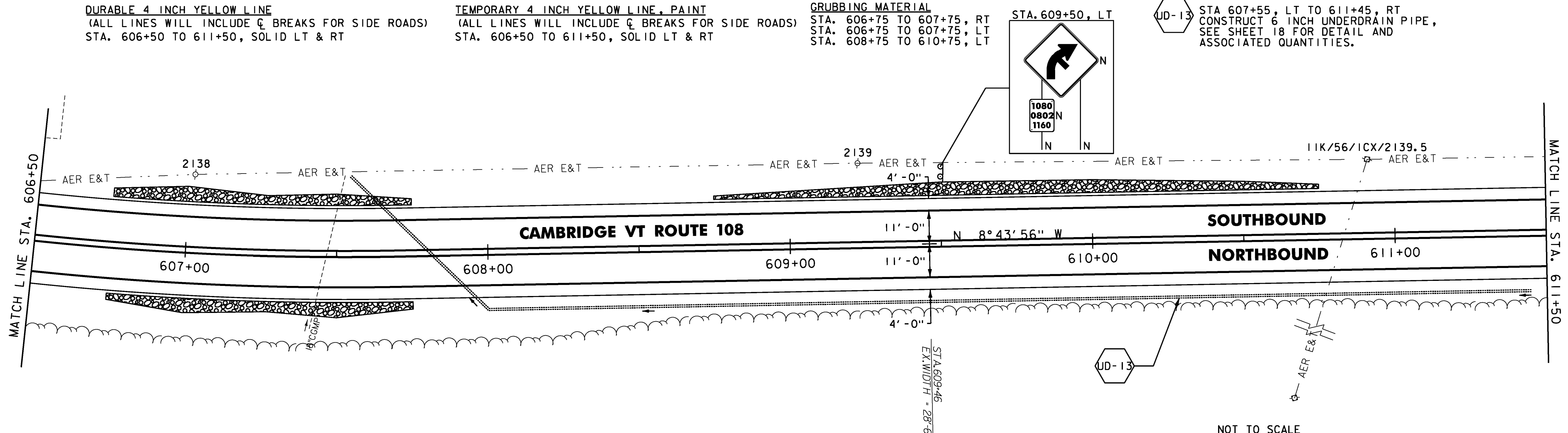
STA. 606+75 TO 607+75, RT  
 STA. 606+75 TO 607+75, LT  
 STA. 608+75 TO 610+75, LT

**BARRIER FENCE**

STA. 607+00 TO 611+50, LT  
 (WITH BREAKS FOR DRIVES AND SIDEROADS)

**UD-13**

STA 607+55, LT TO 611+45, RT  
 CONSTRUCT 6 INCH UNDERDRAIN PIPE,  
 SEE SHEET 18 FOR DETAIL AND  
 ASSOCIATED QUANTITIES.



**ENVIRONMENTALLY SENSITIVE LOCATIONS:**

NO.	LIMITS	POSITION
8.	607+00 TO 611+50	LT

**NOTES:**

- FOR LEGENDS, SEE SHEET 27.
- ALL EXISTING SIGNS NOT SHOWN SHALL BE RETAINED.
- DURABLE MARKINGS DETAILED ON THIS SHEET ARE OPTION BID ITEMS. SEE SHEET 14.



NOT TO SCALE

**PROJECT LAYOUT SHEET #13**

PROJECT NAME: CAMBRIDGE-BAKERSFIELD  
 PROJECT NUMBER: STP 2926(1)

FILE NAME: p10b258.dgn  
 PROJECT LEADER: JLL  
 DESIGNED BY: STANTEC  
 IPARM FILE: p10b258113.i

PLOT DATE: 11/15/2012  
 DRAWN BY: STANTEC  
 CHECKED BY: STANTEC  
 SHEET 39 OF 387