

STONE FILL, TYPE I
 STA. 499+45 TO 500+00, LT
 STA. 500+50 TO 502+50, LT
 STA. 502+80 TO 503+25, LT

RELOCATE MAILBOX, SINGLE SUPPORT
 STA. 500+24, LT

DURABLE 4 INCH WHITE LINE
 (ALL LINES WILL INCLUDE EDGE LINE BREAKS AND RADIUS FOR SIDE ROADS)
 STA. 498+50 TO 503+50, SOLID LT & RT
 STA. 501+75, SOLID RT (EDGELINES, VT ROUTE 109)

DURABLE 4 INCH YELLOW LINE
 (ALL LINES WILL INCLUDE ϕ BREAKS FOR SIDE ROADS)
 STA. 498+50 TO 503+50, SOLID LT & RT
 STA. 501+75, DOUBLE SOLID RT (VT ROUTE 109)

DURABLE 24 INCH STOP BAR
 STA. 501+75, RT (VT ROUTE 109)

DURABLE LETTER OR SYMBOL
 STA. 501+75, RT (VT ROUTE 109) "STOP"

TEMPORARY 4 INCH WHITE LINE, PAINT
 (ALL LINES WILL INCLUDE EDGE LINE BREAKS AND RADIUS FOR SIDE ROADS)
 STA. 498+50 TO 503+50, SOLID LT & RT
 STA. 501+75, SOLID RT (EDGELINES, VT ROUTE 109)

TEMPORARY 4 INCH YELLOW LINE, PAINT
 (ALL LINES WILL INCLUDE ϕ BREAKS FOR SIDE ROADS)
 STA. 498+50 TO 503+50, SOLID LT & RT
 STA. 501+75, DOUBLE SOLID RT (VT ROUTE 109)

TEMPORARY 24 INCH STOP BAR, PAINT
 STA. 501+75, RT (VT ROUTE 109)

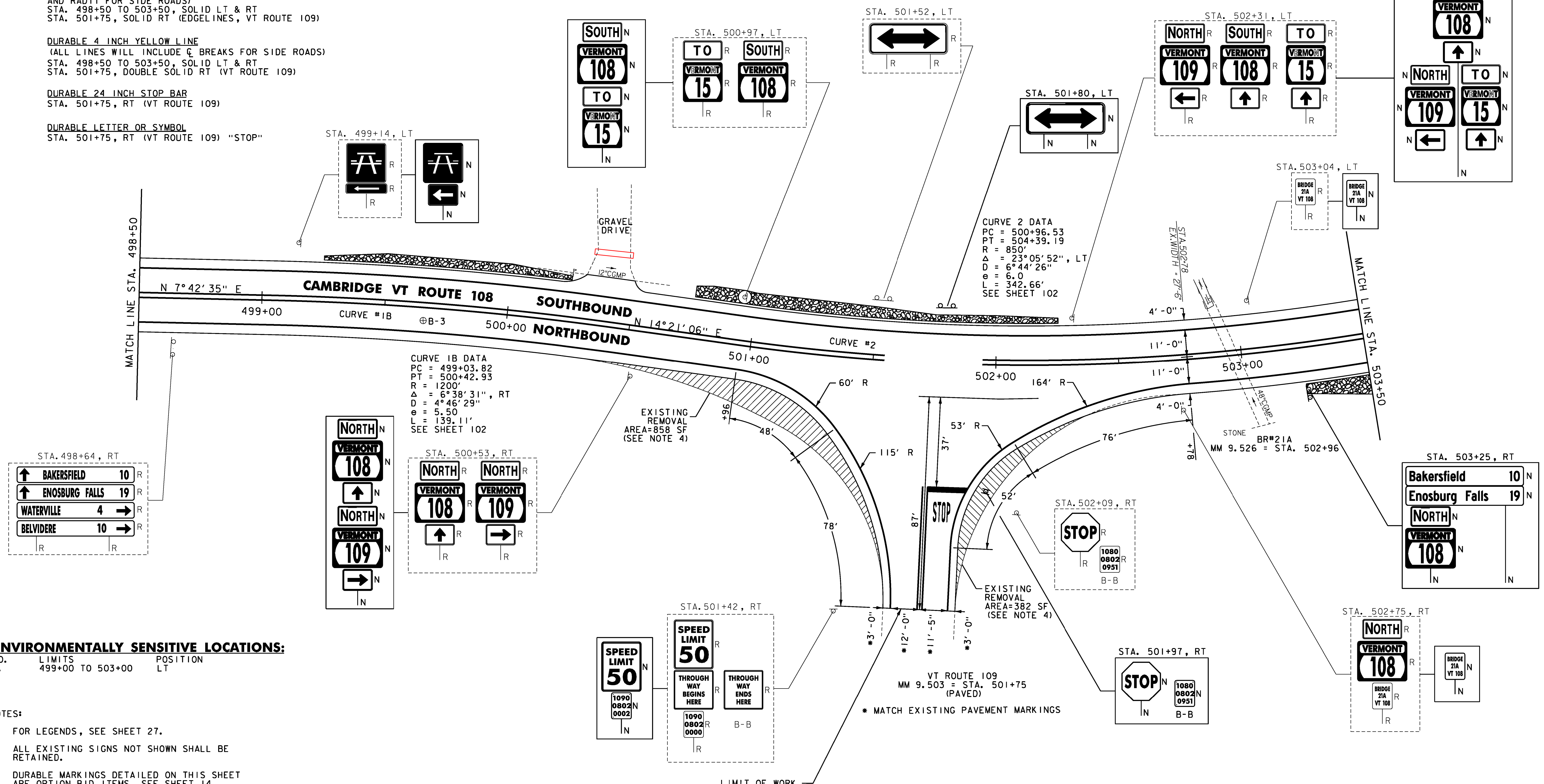
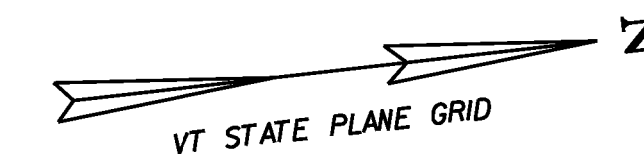
TEMPORARY LETTER OR SYMBOL, PAINT
 STA. 501+75, RT (VT ROUTE 109) "STOP"

GEOTEXTILE UNDER STONE FILL
 STA. 499+25 TO 500+25, LT
 STA. 500+75 TO 502+25, LT
 STA. 503+25 TO 503+50, RT

GRUBBING MATERIAL
 STA. 499+25 TO 500+25, LT
 STA. 500+75 TO 502+25, LT
 STA. 503+25 TO 503+50, RT

BARRIER FENCE
 STA. 499+00 TO 503+00, LT
 (WITH BREAKS FOR DRIVES AND SIDEROADS)

REMOVING SIGNS
 AS SHOWN - 36



CURVE 2 DATA
 PC = 500+96.53
 PT = 504+39.19
 R = 850'
 $\Delta = 23^\circ 05' 52''$, LT
 $D = 6^\circ 44' 26''$
 $e = 6.0$
 $L = 342.66'$
 SEE SHEET 102

CURVE 1B DATA
 PC = 499+03.82
 PT = 500+42.93
 R = 1200'
 $\Delta = 6^\circ 38' 31''$, RT
 $D = 4^\circ 46' 29''$
 $e = 5.50$
 $L = 139.11'$
 SEE SHEET 102

ENVIRONMENTALLY SENSITIVE LOCATIONS:

NO.	LIMITS	POSITION
1.	499+00 TO 503+00	LT

- NOTES:
- FOR LEGENDS, SEE SHEET 27.
 - ALL EXISTING SIGNS NOT SHOWN SHALL BE RETAINED.
 - DURABLE MARKINGS DETAILED ON THIS SHEET ARE OPTION BID ITEMS. SEE SHEET 14.
 - REMOVE 4 INCHES OF EXISTING PAVEMENT AS SHOWN. PAYMENT TO BE MADE UNDER ITEM 203.15 - COMMON EXCAVATION. IF LESS THAN 4 INCHES OF PAVEMENT IS ENCOUNTERED, REMOVAL OF SUBBASE SHALL BE PAID UNDER ITEM 203.15 - COMMON EXCAVATION. REPLACE WITH 4 INCHES OF ITEM 651.35 - TOPSOIL, 651.15 - SEED, 651.18 - FERTILIZER, 651.20 - AGRICULTURAL LIMESTONE AND 653.20 - TEMPORARY EROSION MATTING. ESTIMATED QUANTITIES OF ALL THESE ITEMS HAVE BEEN INCLUDED FOR USE AS DIRECTED BY THE ENGINEER.

REMOVAL OF EXISTING PAVEMENT AREAS, SEE NOTE 3

SOIL BORING DATA			
BORING #	DEPTH (FT.)	PCC	COMMENTS
B-3	5.0'	NO	WATER @ 4.0'



NOT TO SCALE
PROJECT LAYOUT SHEET #2

PROJECT NAME: CAMBRIDGE-BAKERSFIELD
 PROJECT NUMBER: STP 2926(I)
 FILE NAME: pl0b258.dgn
 PROJECT LEADER: JLL
 DESIGNED BY: STANTEC
 IPARM FILE: p10b258102.i
 PLOT DATE: 11/15/2012
 DRAWN BY: STANTEC
 CHECKED BY: STANTEC
 SHEET 28 OF 387