

KOROL 1999

DIRECTION	ACTUAL GRID POINTS		PROJECT SPECIFIC COORDINATE POINTS
	METRIC	ENGLISH	
N	243724.143 m	799610.168 ft	799618.373 ft
E	474045.394 m	1555248.129 ft	1555263.924 ft
Z	145.532 m	477.46 ft	477.42 ft

GENERAL LOCATION, CAMBRIDGE, VT.

TO REACH FROM THE INTERSECTION OF VT ROUTES 108 AND 109, JUST NORTH OF JEFFERSONVILLE, GO NORTH ALONG VT ROUTE 108 FOR 2.85 MI (4.59 KM) TO THE SITE OF THE MARK ON THE LEFT, JUST SOUTH OF THE SEE SPOT RUN KENNEL. IT IS 0.8 MI (1.3 KM) SOUTH ALONG VT ROUTE 108 FROM THE CAMBRIDGE-FLETCHER TOWN LINE. THE MARK IS SET IN THE TOP OF A 30 CM (12 INCH) DIAMETER CONCRETE MONUMENT WHICH PROJECTS 5 CM (2 INCH) ABOVE GROUND SURFACE. IT IS 13.2 M (43.3 FT) WEST OF AND ABOUT LEVEL WITH THE WEST EDGE OF PAVEMENT OF VT ROUTE 108, 45.4 M (148.9 FT) SOUTH OF POLE NO 11K/67S, 25.9 M (85.0 FT) NORTHWEST OF POLE NO TS320/2155, AND 0.3 M (1.0 FT) EAST OF A FIBERGLASS WITNESS POST

DESCRIPTIONS PROVIDED BY VERMONT AGENCY OF TRANSPORTATION GEODETIC SURVEY UNIT.

KOROL AZ MK 200

DIRECTION	ACTUAL GRID POINTS		PROJECT SPECIFIC COORDINATE POINTS
	METRIC	ENGLISH	
N	244555.239 m	802346.585 ft	802346.585 ft
E	473825.787 m	1554546.546 ft	1554546.546 ft
Z	139.028 m	456.13 ft	456.13 ft

GENERAL LOCATION, CAMBRIDGE, VT

TO REACH FROM THE INTERSECTION OF VT ROUTE 108 AND VT ROUTE 109 GO NORTH ALONG VT ROUTE 108 FOR 3.4 MI TO THE SITE OF THE MARK ON THE LEFT ON A SMALL KNOLL IN A PASTURE. IT IS ABOUT 35 M SOUTH ALONG VT ROUTE 108 FROM THE GRAVEL DRIVE LEADING TO THE PERRY RESIDENCE, HOUSE NO 3912. THE MARK IS SET 4 CM BELOW GROUND SURFACE IN THE TOP OF A FENO STYLE MONUMENT. IT IS 15.1 M WEST OF AND ABOUT 0.5 M LOWER THAN THE CENTERLINE OF VT ROUTE 108, 22.9 M SOUTH SOUTHWEST OF POLE NO 2165 1/2, 35.7 M NORTHWEST OF POLE NO TS320/2165, AND 9.7 M WEST OF A WIRE FENCE AND A FIBERGLASS WITNESS POST.

FLETCH

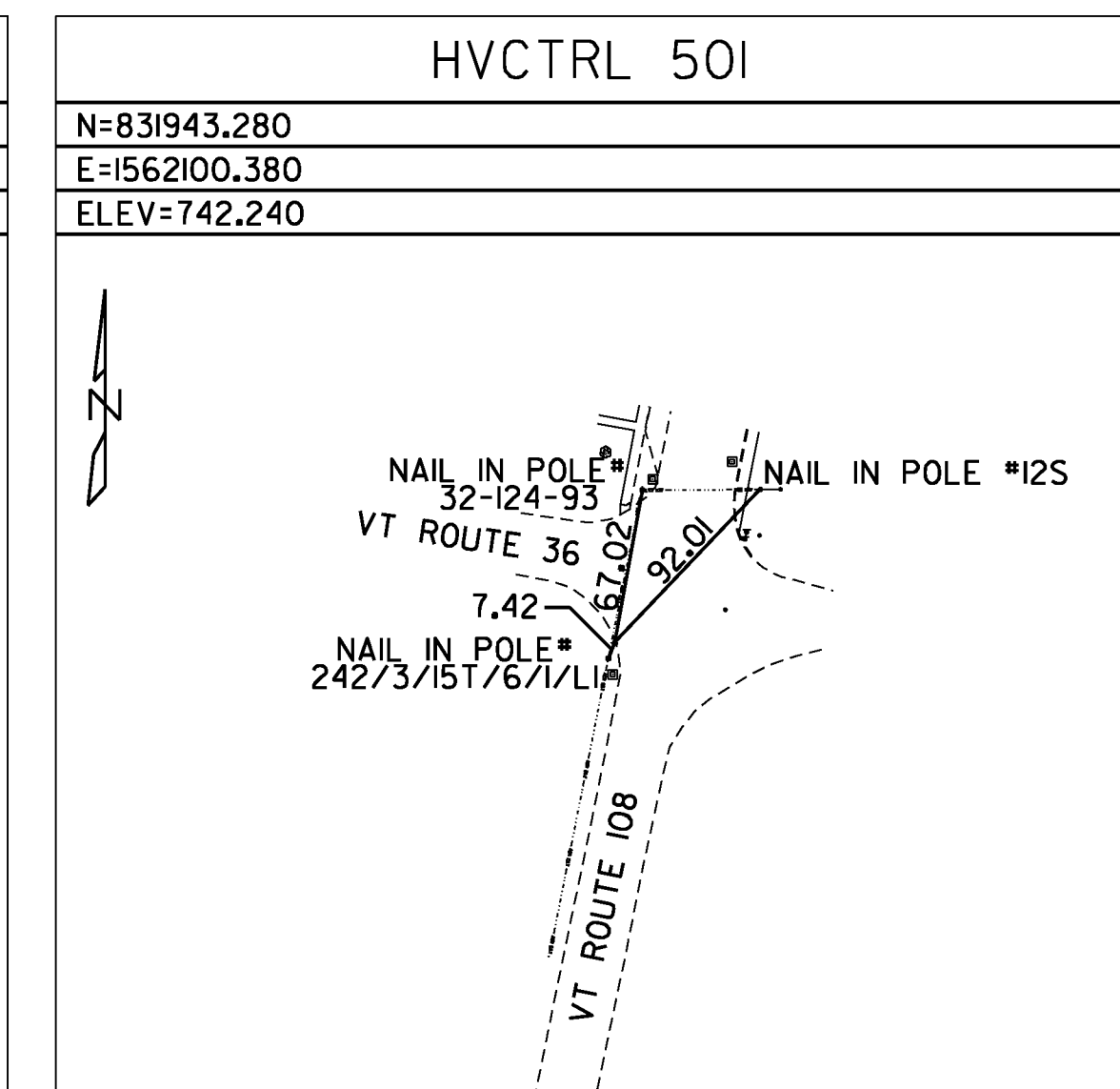
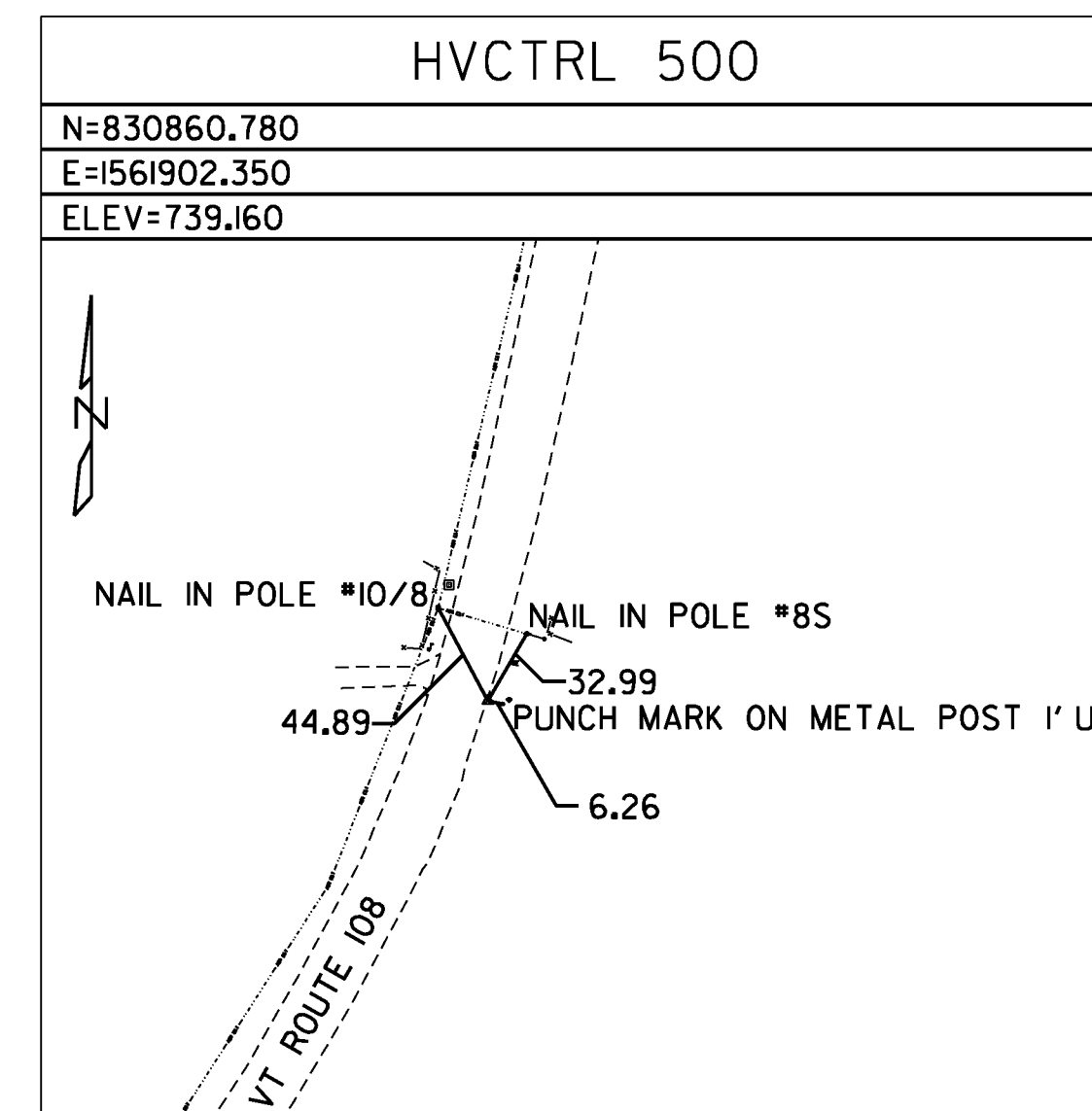
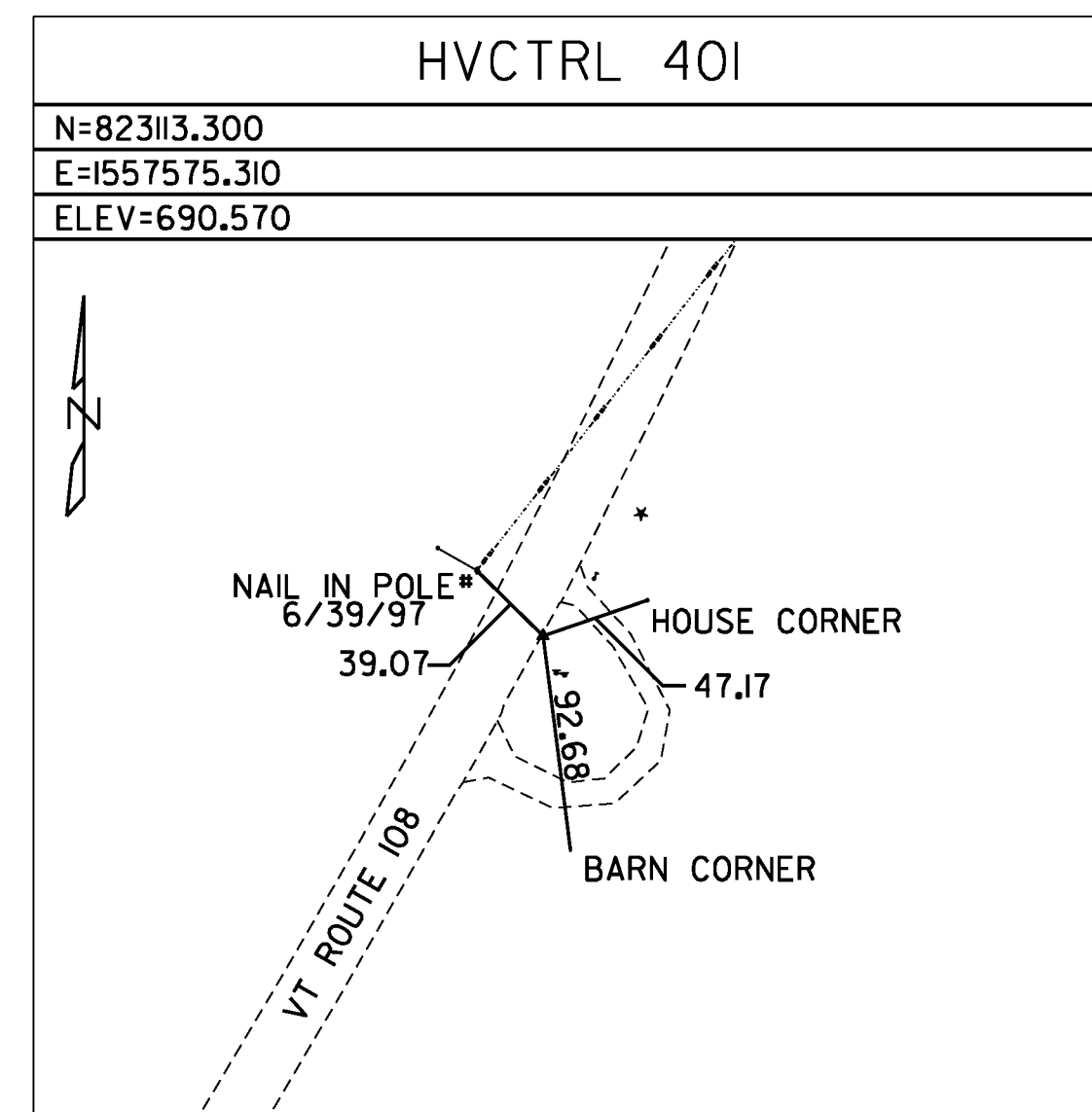
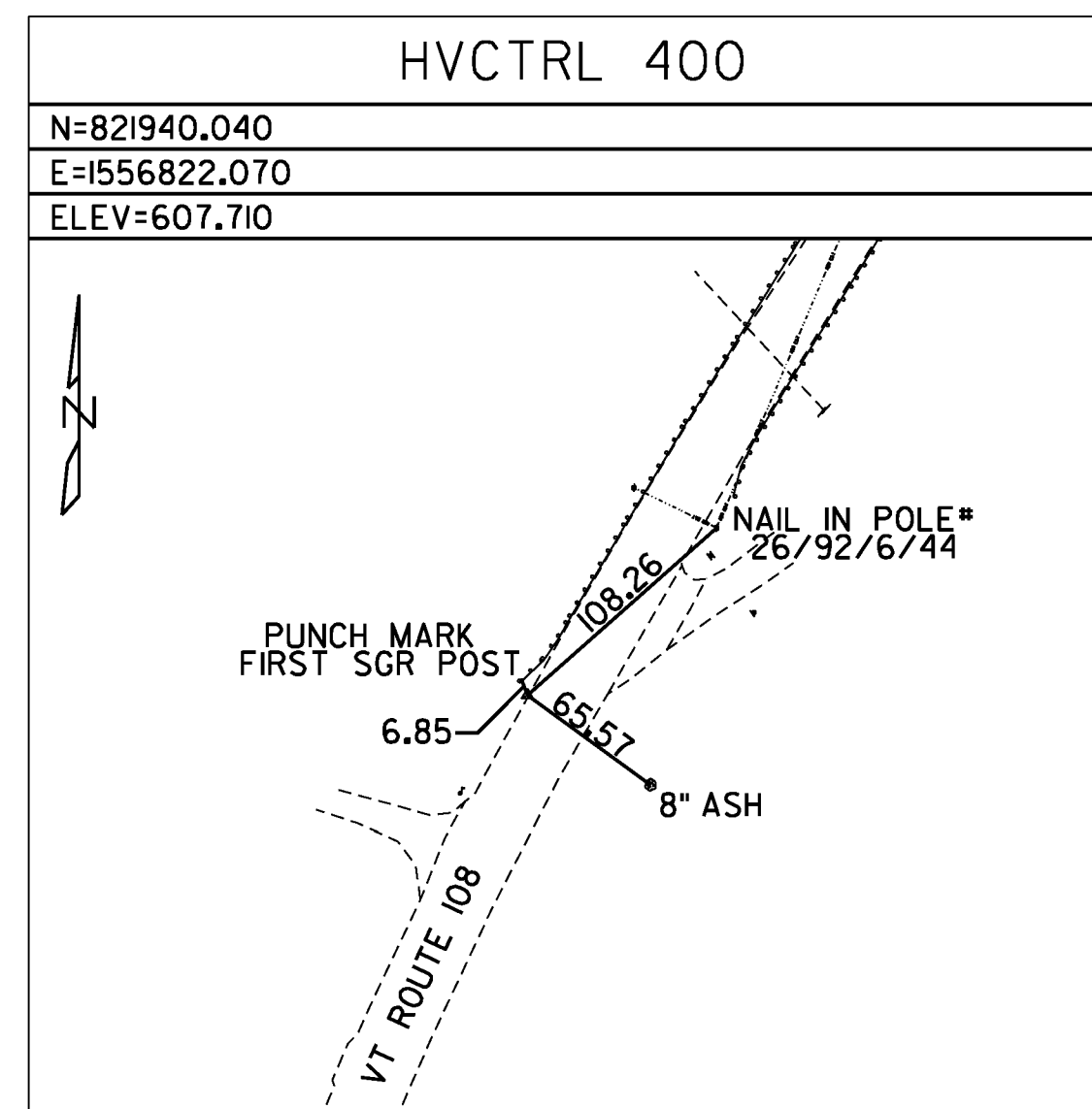
DIRECTION	ACTUAL GRID POINTS		PROJECT SPECIFIC COORDINATE POINTS
	METRIC	ENGLISH	
N	248009.457 m	813679.320 ft	813679.320 ft
E	473980.390 m	1555053.772 ft	1555053.772 ft
Z	140.482 m	460.898 ft	460.898 ft

GENERAL LOCATION, FLETCHER, VT

TO REACH FROM THE INTERSECTION OF VT ROUTES 36 AND 108 IN BAKERSFIELD, GO SOUTH ALONG VT ROUTE 108 FOR 1.7 MI (2.7 KM) TO THE INTERSECTION OF WHITNEY ROAD RIGHT. CONTINUE SOUTH ALONG VT ROUTE 108 FOR 2.0 MI (3.2 KM) TO THE SITE OF THE MARK ON THE RIGHT.

THE MARK IS SET 25 CM (10 INCHES) BELOW GROUND SURFACE IN THE TOP OF A FENO STYLE MONUMENT.

IT IS 9.4 M (30.8 FT) NORTHWEST OF AND ABOUT 1.0 M (3.3 FT) HIGHER THAN THE CENTERLINE OF VT ROUTE 108, 16.1 M (52.8 FT) NORTH-NORTHEAST OF MILE MARKER POST 1080/0606/0220, 30.4 M (99.7 FT) WEST OF AND ACROSS THE ROAD FROM POLE NO 11K/114/77 WITH TRANSFORMER, 80.0 M (262.5 FT) SOUTHWEST OF THE SOUTHWEST END POST OF A METAL GUARD RAIL AND 0.4 M (1.3 FT) SOUTHEAST OF A FIBERGLASS WITNESS POST.



DATUM	
VERTICAL	NAVD 88
HORIZONTAL	NAD 83 (07)
ADJUSTMENT	NONE

NOT TO SCALE

NOTE: ALL DIMENSIONS ARE IN FEET UNLESS NOTED OTHERWISE.



PROJECT TIE SHEET #2

PROJECT NAME: CAMBRIDGE-BAKERSFIELD
PROJECT NUMBER: STP 2926(1)

FILE NAME: p10b258.dgn
PROJECT LEADER: JLL
DESIGNED BY: STANTEC
IPARM FILE: p10b258ct02.i

PLOT DATE: 11/15/2012
DRAWN BY: STANTEC
CHECKED BY: STANTEC
SHEET 9 OF 387