

STILL 2011

DIRECTION	ACTUAL GRID POINTS		PROJECT SPECIFIC COORDINATE POINTS
	METRIC	ENGLISH	
N	238630.880 m	782909.711 ft	782909.711 ft
E	473815.556 m	1554512.978 ft	1554512.978 ft
Z	139.610 m	458.038 ft	458.038 ft

GENERAL LOCATION, CAMBRIDGE, VT.

THE MARK IS IN THE SOUTHWEST QUADRANT OF THE INTERSECTION OF VT ROUTES 15 AND 108 NORTH AND ACROSS THE ROAD FROM THE JEFFERSONVILLE AUTOMOTIVE BUILDING.

THE MARK IS SET 20 CM (8 INCHES) BELOW GROUND SURFACE IN THE TOP OF A FENO STYLE MONUMENT.

IT IS 7.4 M (24.3 FT) SOUTH OF AND ABOUT 0.2 M (0.7 FT) LOWER THAN THE CENTERLINE OF VT ROUTE 15, 28.3 M (92.8 FT) WEST-SOUTHWEST OF THE NORTH SIGN POST FOR VT ROUTE SIGNS N108/E15/S108/AND TO 109, 33.3 M (109.3 FT) EAST-NORTHEAST OF THE NORTH SIGN POST FOR TOWN SIGNS JOHNSON/MORRISVILLE/BAKERSFIELD/ AND ENOSBURG, 31.2 M (102.4 FT) EAST-NORTHEAST OF THE (INLET) END OF A 46 CM (18 INCH) DIAMETER CONCRETE CULVERT, 27.3 M (89.6 FT) WEST-NORTHWEST OF AND ACROSS THE ROAD FROM POLE NO 77, 42.6 M (139.8 FT) WEST-SOUTHWEST OF AN UNNUMBERED POLE AND 0.3 M (1.0 FT) NORTH OF A FIBERGLASS WITNESS POST.

DESCRIPTIONS PROVIDED BY VERMONT AGENCY OF TRANSPORTATION GEODETIC SURVEY UNIT.

U 20 1935

DIRECTION	ACTUAL GRID POINTS		PROJECT SPECIFIC COORDINATE POINTS
	METRIC	ENGLISH	
N	242103.758 m	794302.080 ft	794302.090 ft
E	474128.007 m	1555534.970 ft	1555534.510 ft
Z	146.496 m	480.63 ft	480.97 ft

GENERAL LOCATION, CAMBRIDGE, VT

TO REACH FROM THE INTERSECTION OF VT ROUTES 15 AND 108 NORTH IN JEFFERSONVILLE, GO NORTH ALONG VT ROUTE 108 FOR 2.1 MI (3.4 KM) TO THE INTERSECTION OF A FIELD DRIVE ON THE LEFT.

THE MARK IS SET IN THE TOP OF A 20 CM (8 INCH) SQUARE CONCRETE POST WHICH PROJECTS 2 CM (1 INCH) ABOVE GROUND SURFACE.

IT IS 27.5 M (90.2 FT) WEST OF AND ABOUT 2.0 M (6.6 FT) HIGHER THAN THE CENTERLINE OF VT ROUTE 108, 17.2 M (56.4 FT) NORTHWEST OF POLE NO 2134, 6.9 M (22.6 FT) NORTH OF THE FIELD DRIVE, 6.4 M (21.0 FT) EAST OF THE RAIL TRAIL, 10.0 M (32.8 FT) SOUTH OF A 70 CM (28 INCH) PINE, 1.4 M (4.6 FT) EAST OF AN ASH TREE WITH TRIANGLE BLAZE AND 0.3 M (1.0 FT) SOUTHWEST OF A METAL WITNESS POST.

H 6 1924

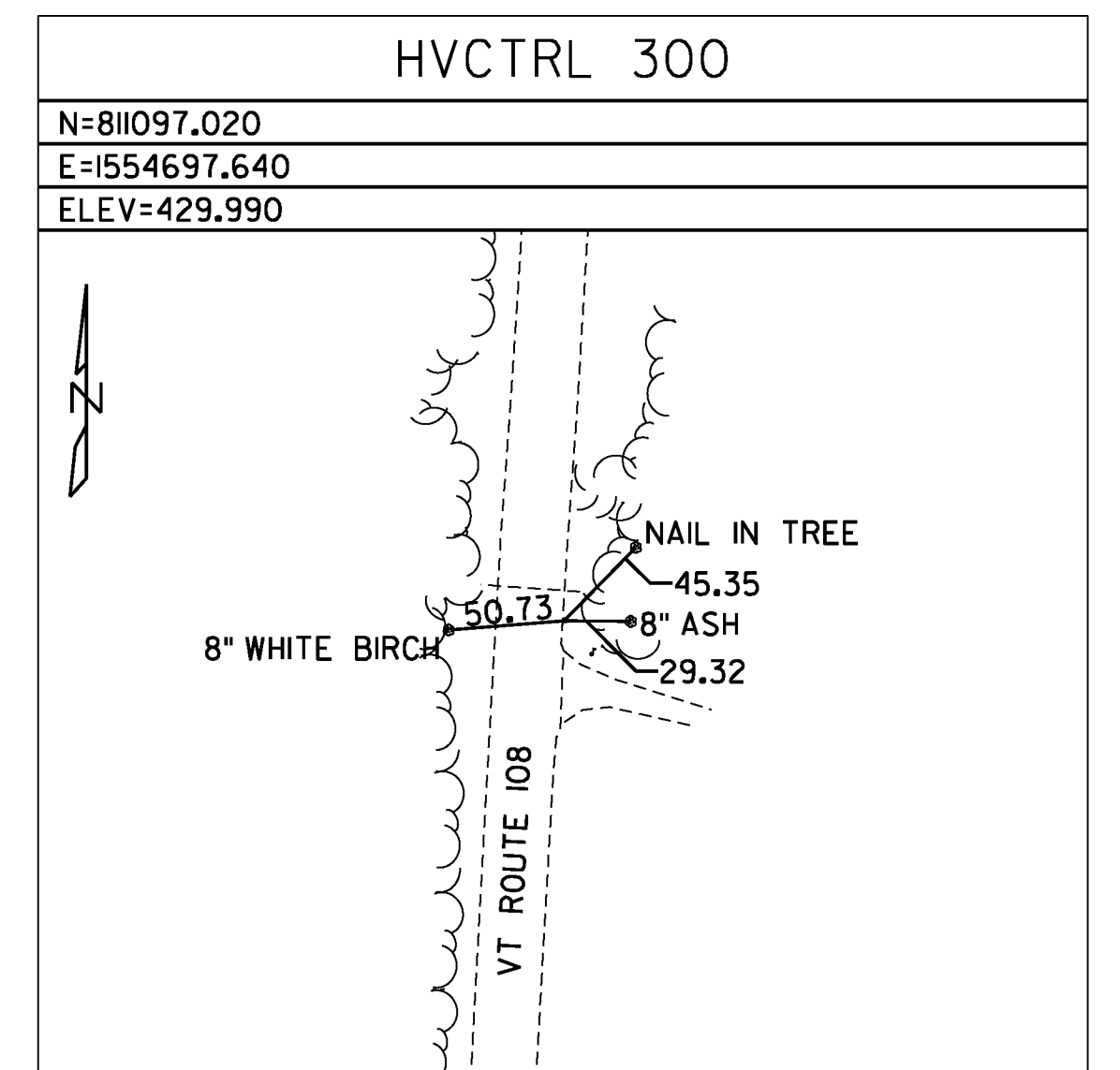
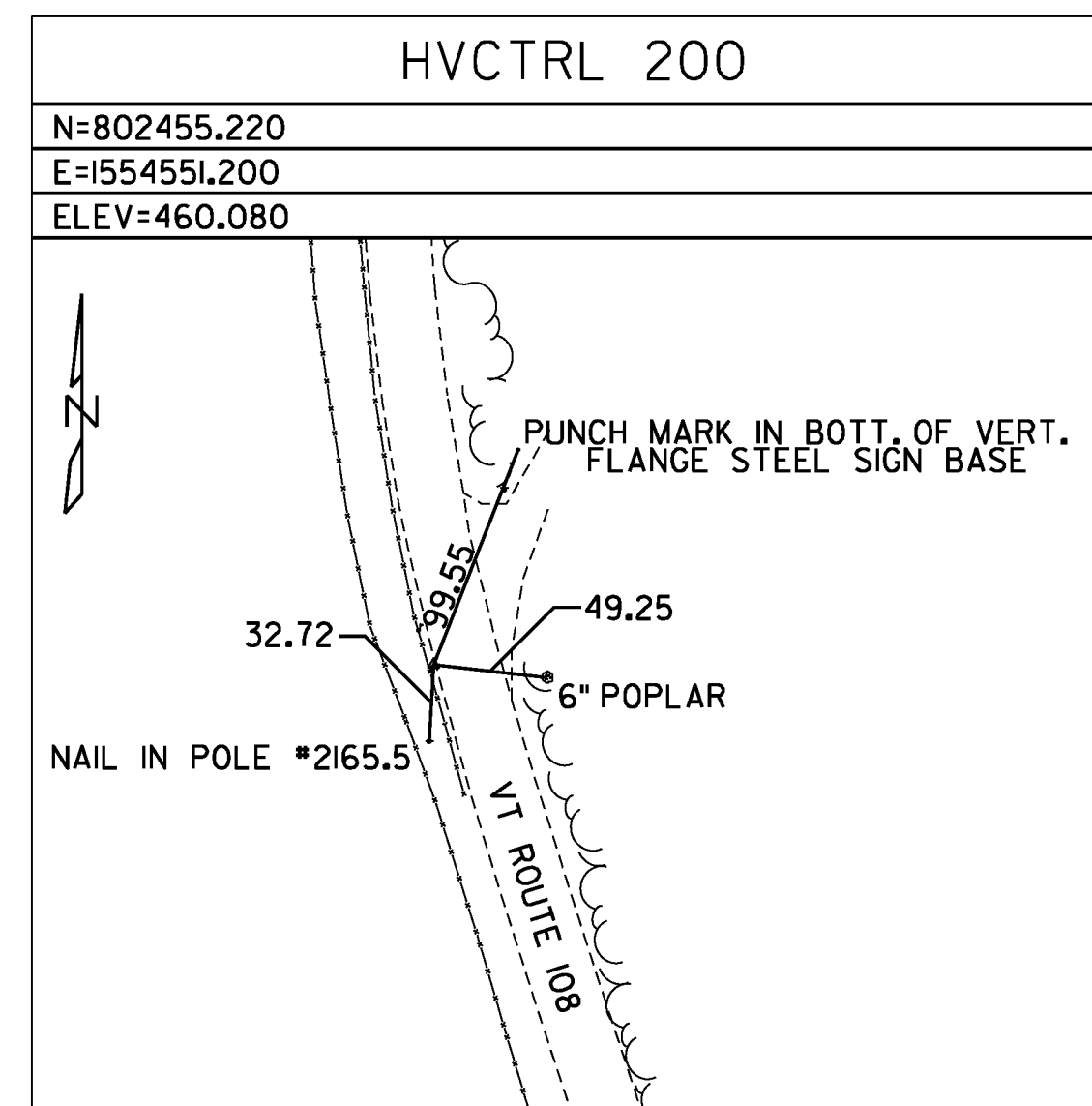
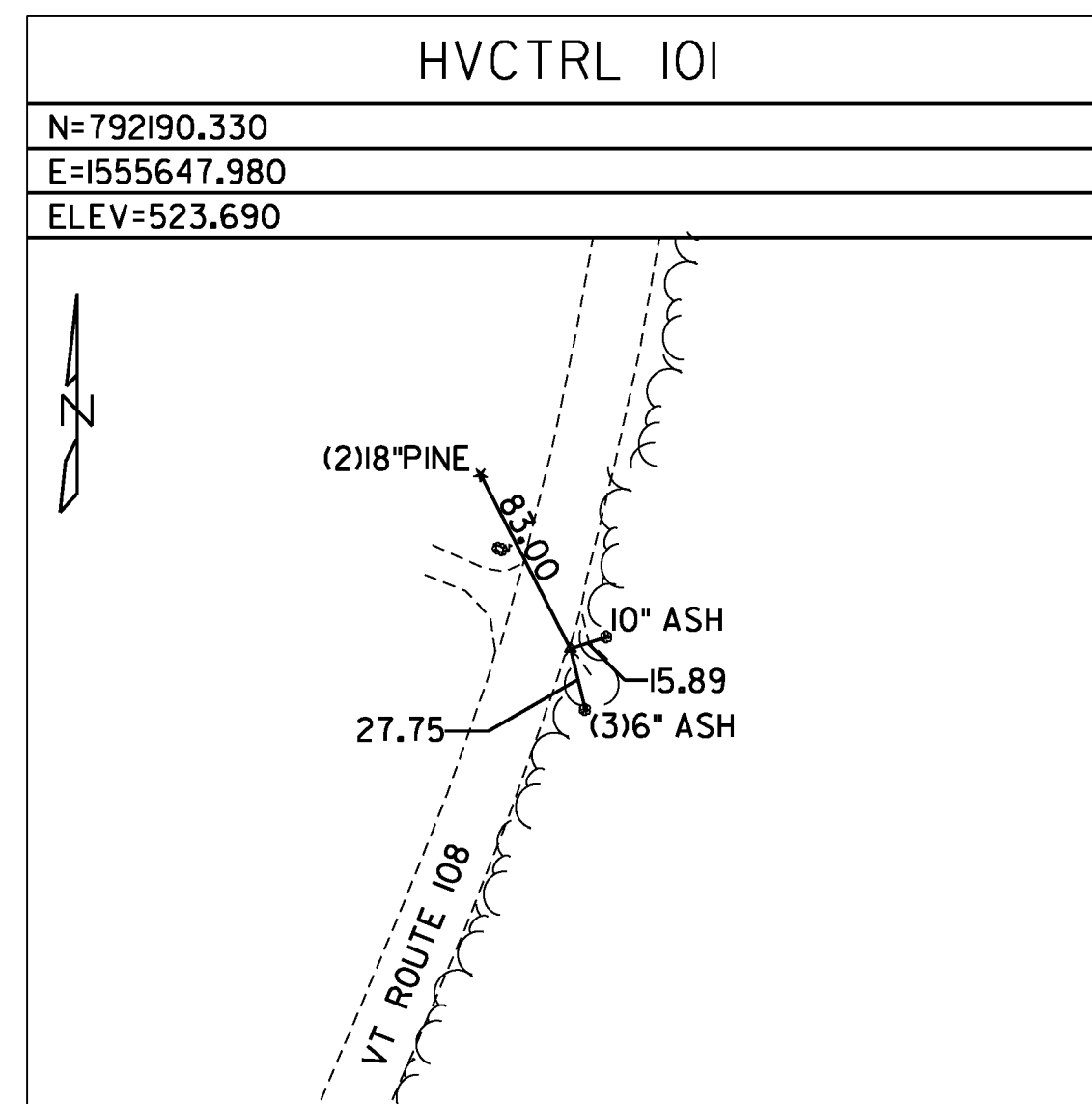
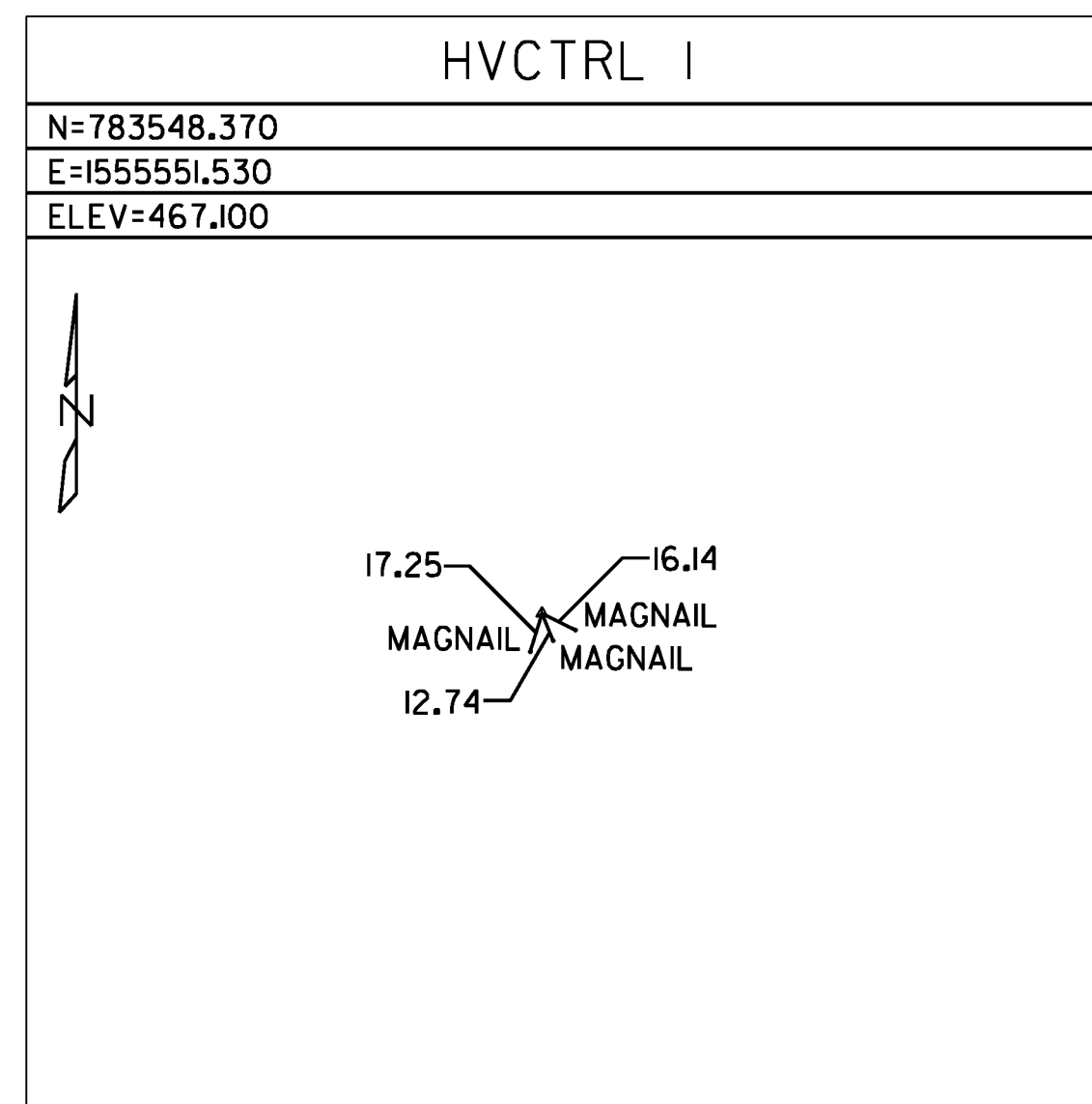
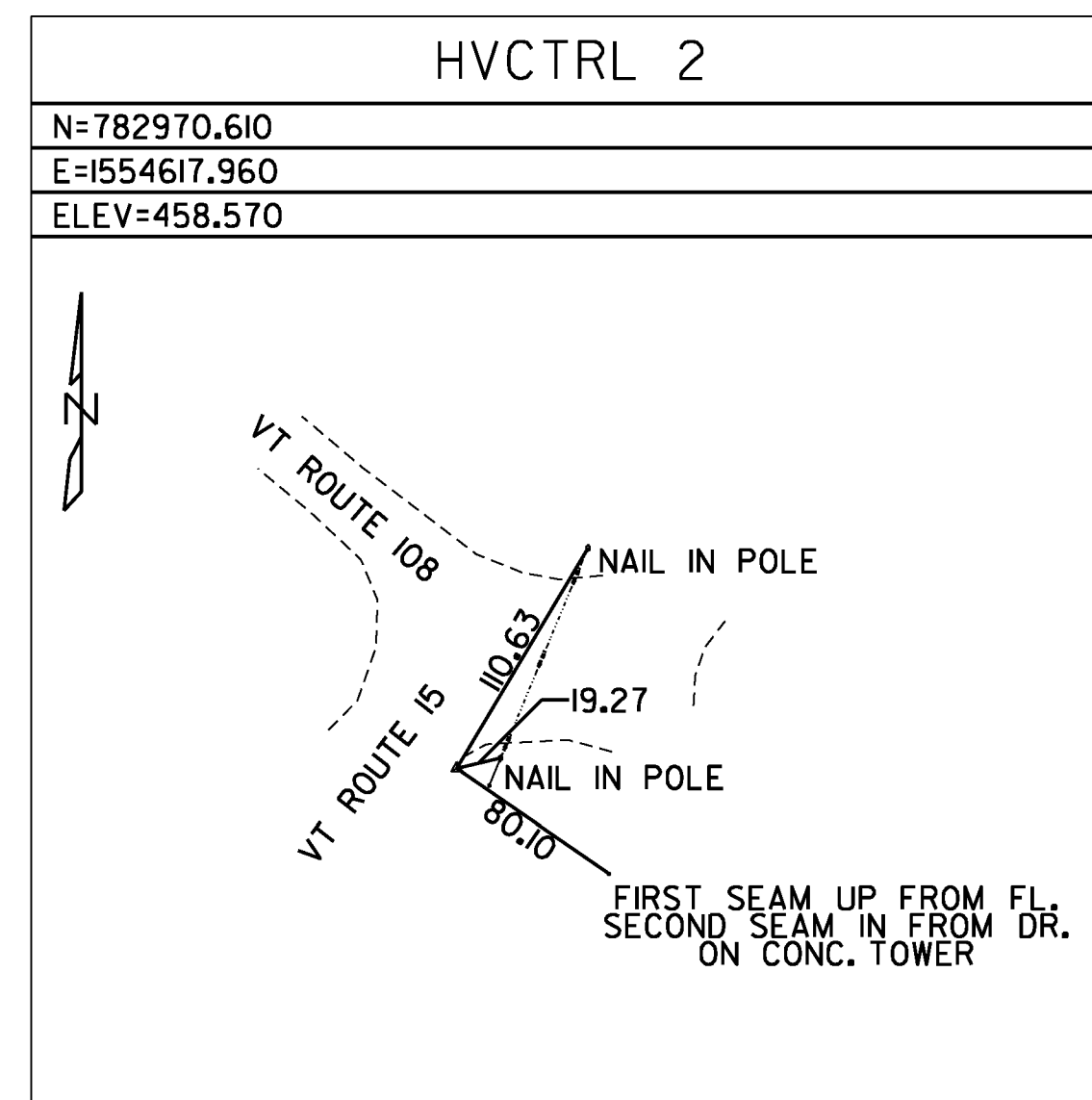
DIRECTION	ACTUAL GRID POINTS		PROJECT SPECIFIC COORDINATE POINTS
	METRIC	ENGLISH	
N	242272.630 m	794857.710 ft	794857.710 ft
E	474245.504 m	1555923.570 ft	1555923.570 ft
Z	147.837 m	485.03 ft	485.03 ft

GENERAL LOCATION, CAMBRIDGE, VT

TO REACH FROM THE INTERSECTION OF VT ROUTES 15 AND 108 NORTH IN JEFFERSONVILLE, GO NORTH ALONG VT ROUTE 108 FOR 2.5 MI (4.0 KM) TO THE INTERSECTION OF POLLANDER ROAD LEFT AND THE SITE OF THE MARK ON THE RIGHT IN THE WOODS. IT IS ABOUT 10.0 M (32.8 FT) SOUTH-SOUTHWEST OF THE INTERSECTION OF POLLANDER ROAD.

THE MARK IS SET 1.0 M (3.3 FT) NORTH OF THE SOUTH EDGE AND 0.7 M (2.3 FT) EAST OF THE WEST EDGE IN THE SOUTH END OF A GRANITE LEDGE WHICH IS ABOUT 1.1 M (3.6 FT) ABOVE GROUND SURFACE.

IT IS 18.9 M (62.0 FT) EAST OF AND ABOUT 1.3 M (4.3 FT) HIGHER THAN THE CENTERLINE OF VT ROUTE 108, 12.4 M (40.7 FT) SOUTH-SOUTHEAST OF POLE NO 34/320/2137, 8.0 M (26.2 FT) SOUTH OF THE SOUTHEAST GUY ANCHOR AND 7.0 M (23.0 FT) SOUTHWEST OF A 45 CM (18 INCH) PINE WITH TRIANGLE BLAZE.



DATUM	
VERTICAL	NAVD 88
HORIZONTAL	NAD 83 (07)
ADJUSTMENT	NONE



NOT TO SCALE

NOTE: ALL DIMENSIONS ARE IN FEET UNLESS NOTED OTHERWISE.

PROJECT TIE SHEET #1

PROJECT NAME: CAMBRIDGE-BAKERSFIELD
PROJECT NUMBER: STP 2926(1)

FILE NAME: p10b258.dgn
PROJECT LEADER: JLL
DESIGNED BY: STANTEC
IPARM FILE: p10b258ct01.i

PLOT DATE: 11/15/2012
DRAWN BY: STANTEC
CHECKED BY: STANTEC
SHEET 8 OF 387