

TEMPORARY 4 INCH WHITE LINE, PAINT
 DURABLE 4 INCH WHITE LINE
 B47+00 TO B48+40 SOLID LT
 B47+00 TO B48+43 SOLID RT
 B48+50 TO B51+59 SOLID LT
 B48+52 TO B50+40 SOLID RT
 B48+77 TO B48+90 SOLID RT (NO PARKING)
 B48+90 TO B49+53 SOLID RT (PARKING)
 B49+53 TO B49+68 SOLID RT (NO PARKING)

TEMPORARY 4 INCH YELLOW LINE, PAINT
 DURABLE 4 INCH YELLOW LINE
 B47+00 TO B48+42 SOLID LT & RT
 B48+51 TO B50+41 SOLID LT & RT

TEMPORARY 24 INCH STOP BAR, PAINT
 DURABLE 24 INCH STOP BAR
 B50+41 RT (14')

TEMPORARY LETTER OR SYMBOL, PAINT
 DURABLE LETTER OR SYMBOL
 B50+32 RT - "STOP"

TEMPORARY CROSSWALK MARKING, PAINT
 DURABLE CROSSWALK MARKING
 B48+45 TO B48+48 LT TO RT

REHAB. DROP
 INLETS, CATCH BASINS, OR MANHOLES,
 CLASS I OR CLASS II
 B48+02 RT (DI)
 B48+38 LT (DI)
 B48+40 RT (DI)
 B49+51 RT (DI)
 B50+30 RT (DI)
 B51+28 LT (DOUBLE GRATE DI)

CHANGING ELEVATION
 OF SEWER MANHOLES (NON-PART.)
 B47+37 LT
 B48+23 RT
 B50+78 RT

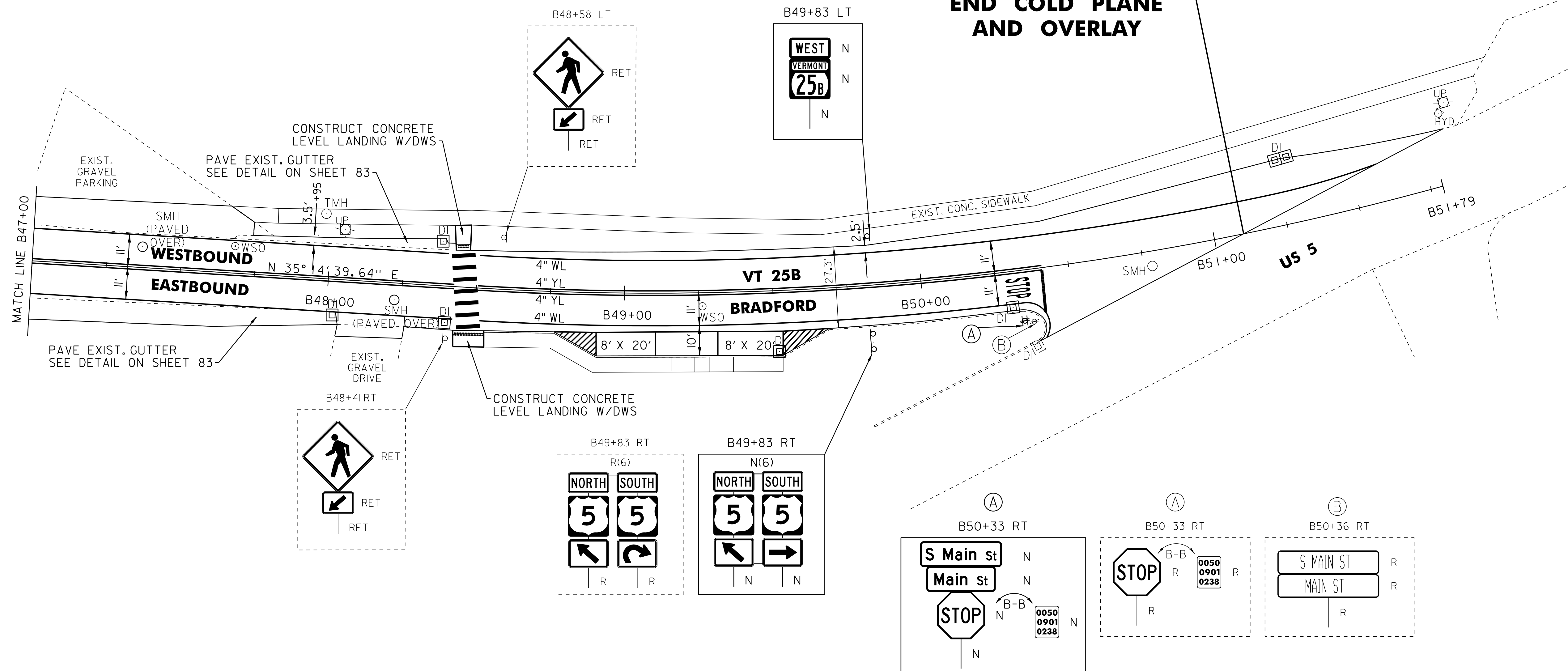
ADJUST ELEVATION OF
 VALVE BOX (NON-PART.)
 B47+68 LT
 B49+26 RT
 BITUMINOUS CONCRETE
 GUTTERS AND TRAFFIC ISLANDS
 B47+00 TO B48+04 RT
 B47+68 TO B48+42 LT

DETECTABLE
 WARNING SURFACE (DWS)
 B48+45 LT
 B48+48 RT

PORTLAND CEMENT
 CONCRETE SIDEWALK, 5 INCH
 B48+42 TO B48+47 LT (LEVEL LANDING)
 B48+43 TO B48+53 RT (LEVEL LANDING)

REMOVING SIGNS
 AS SHOWN - 10

VT 25B
B51+10.00
(MM 0.968)
END PROJECT
STP 2918(1)
END COLD PLANE
AND OVERLAY



LEGEND

- R = REMOVE EXISTING
- S = SALVAGED
- R&S = REMOVE AND SALVAGE
- N = NEW
- RET = RETAIN
- B-B = BACK TO BACK
- = EXISTING GUARDRAIL
- = PROPOSED GUARDRAIL
- YL = YELLOW LINE
- WL = WHITE LINE
- = DELINEATOR
- ⊕ = PAVEMENT CORE

ROADWAY LAYOUT 10 VT 25B

PROJECT NAME: BRADFORD

PROJECT NUMBER: STP 2918(1)

FILE NAME: p10b236.dgn

PROJECT LEADER: PTS

DESIGNED BY: NULL

IPARM FILE NAME: p10c238_97

PLOT DATE: 03-SEP-2014 12:51

DRAWN BY: SNG

CHECKED BY: PTS

SHEET 97 OF 105

NOT TO SCALE