

TEMPORARY 4 INCH WHITE LINE, PAINT
 DURABLE 4 INCH WHITE LINE
 B0+20 TO B5+00 SOLID LT & RT

TEMPORARY 4 INCH YELLOW LINE, PAINT
 DURABLE 4 INCH YELLOW LINE
 B0+24 TO B5+00 SOLID LT & RT

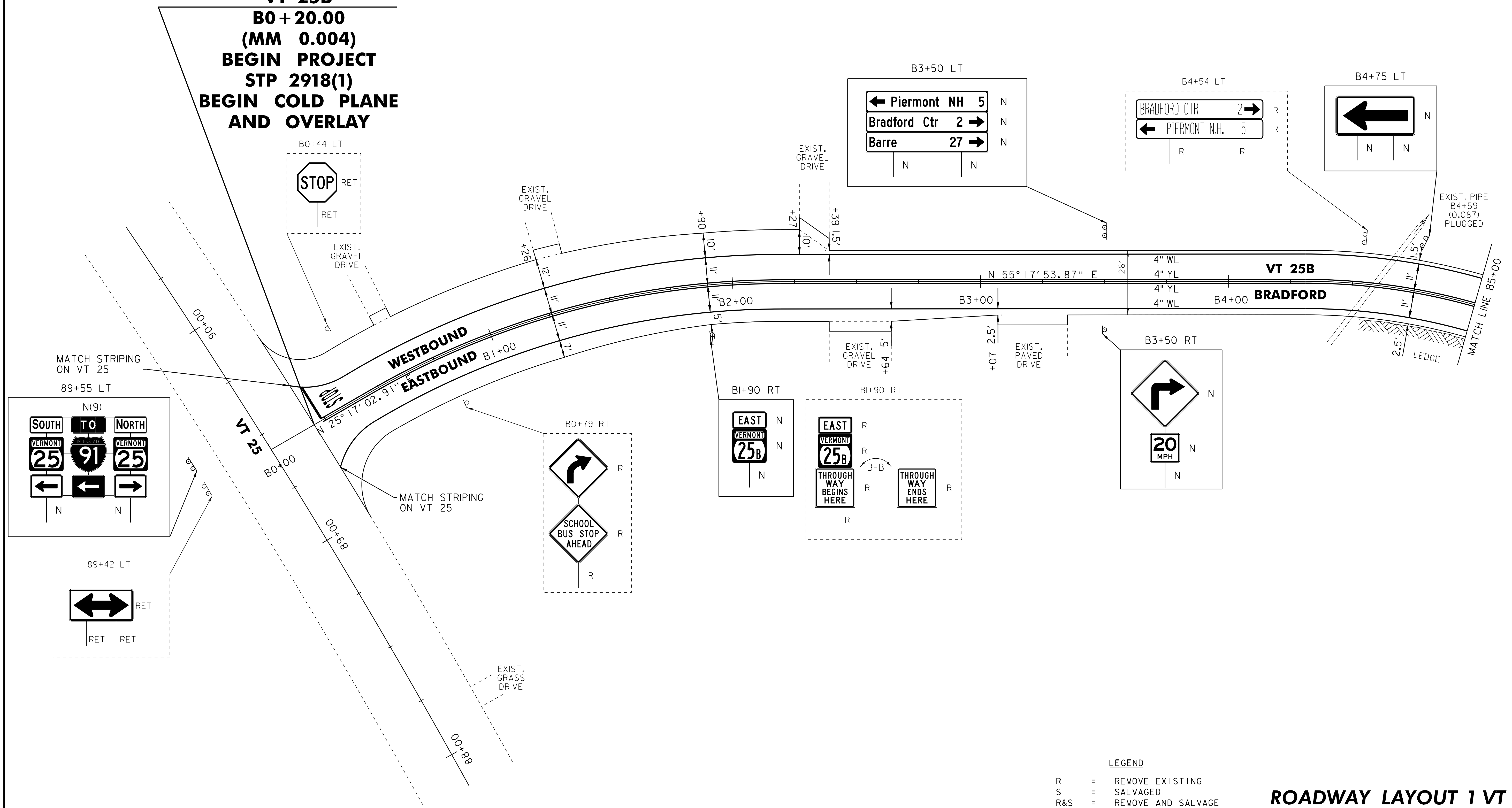
TEMPORARY 24 INCH STOP BAR, PAINT
 DURABLE 24 INCH STOP BAR
 B0+24 LT

TEMPORARY LETTER OR SYMBOL, PAINT
 DURABLE LETTER OR SYMBOL
 B0+32 LT - "STOP"

REMOVING SIGNS
 AS SHOWN - 8

THINNING : TRIMMING FOR SIGNS
 B 3+50 RT & LT

VT 25B
B0+20.00
(MM 0.004)
BEGIN PROJECT
STP 2918(1)
BEGIN COLD PLANE
AND OVERLAY



NOT TO SCALE

LEGEND

- R = REMOVE EXISTING
- S = SALVAGED
- R&S = REMOVE AND SALVAGE
- N = NEW
- RET = RETAIN
- B-B = BACK TO BACK
- = EXISTING GUARDRAIL
- = PROPOSED GUARDRAIL
- YL = YELLOW LINE
- WL = WHITE LINE
- = DELINEATOR
- ⊙ = PAVEMENT CORE

ROADWAY LAYOUT 1 VT 25B

PROJECT NAME: BRADFORD	PLOT DATE: 03-SEP-2014 12:51
PROJECT NUMBER: STP 2918(1)	DRAWN BY: SNG
FILE NAME: p10b236.dgn	CHECKED BY: PTS
PROJECT LEADER: PTS	SHEET 88 OF 105
DESIGNED BY: NLL	
IPARM FILE NAME: p10C238_88	