

TEMPORARY 4 INCH WHITE LINE, PAINT
 DURABLE 4 INCH WHITE LINE
 308+00 TO 318+50 SOLID LT & RT

TEMPORARY 4 INCH YELLOW LINE, PAINT
 DURABLE 4 INCH YELLOW LINE
 308+00 TO 318+50 SOLID LT & RT

REHAB. DROP INLETS
 CATCH BASINS, OR MANHOLES,
 CLASS I, CLASS II
 315+69 LT (DI)

STEEL BEAM GUARDRAIL, GALVANIZED
 314+90 TO 318+50 LT

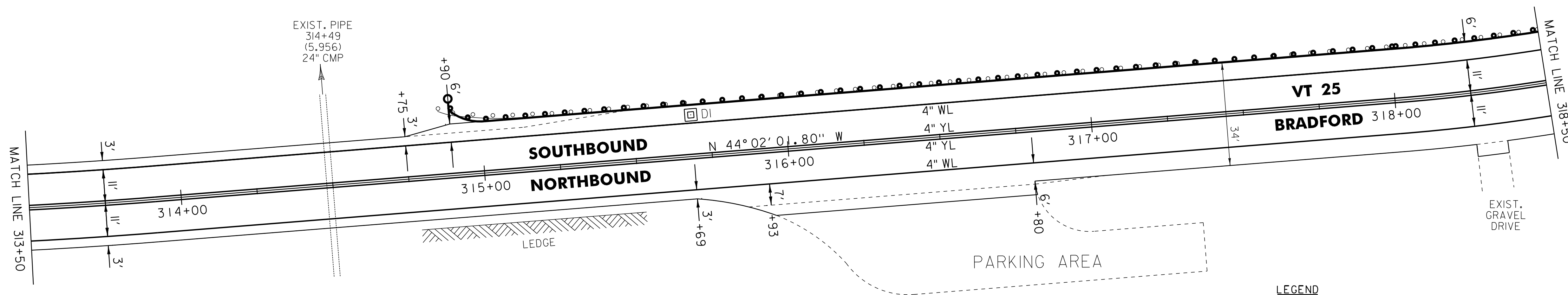
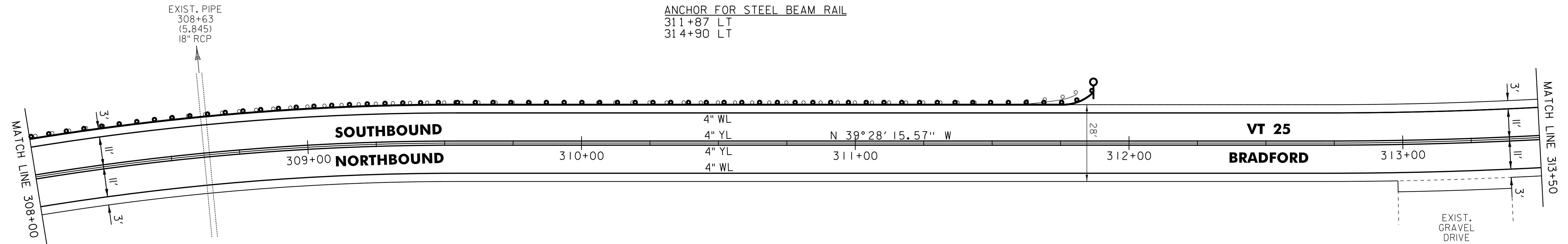
STEEL BEAM GUARDRAIL, GALVANIZED W/8 FEET POSTS
 308+00 TO 311+87 LT

ANCHOR FOR STEEL BEAM RAIL
 311+87 LT
 314+90 LT

REMOVAL AND DISPOSAL OF GUARDRAIL
 308+00 TO 311+81 LT
 314+86 TO 318+50 LT

DELINEATOR WITH STEEL POST
 311+87 LT
 314+90 LT

TREATED TIMBER CURB
 315+65 TO 318+50 LT



LEGEND

- R = REMOVE EXISTING
- S = SALVAGED
- R&S = REMOVE AND SALVAGE
- N = NEW
- RET = RETAIN
- B-B = BACK TO BACK
- = EXISTING GUARDRAIL
- = PROPOSED GUARDRAIL
- YL = YELLOW LINE
- WL = WHITE LINE
- = DELINEATOR
- ||||||| = RUMBLE STRIP

ROADWAY LAYOUT 35 VT 25

PROJECT NAME: BRADFORD	PLOT DATE: 03-SEP-2014 12:51
PROJECT NUMBER: STP 2917(I)	DRAWN BY: SNG
FILE NAME: p10b236.dgn	CHECKED BY: PTS
PROJECT LEADER: PTS	SHEET 76 OF 105
DESIGNED BY: NLL	
IPARM FILE NAME: p10b236_76	

NOT TO SCALE