

TEMPORARY 4 INCH WHITE LINE, PAINT
 DURABLE 4 INCH WHITE LINE
 243+00 TO 253+50 SOLID LT & RT

TEMPORARY 4 INCH YELLOW LINE, PAINT
 DURABLE 4 INCH YELLOW LINE
 243+00 TO 253+50 SOLID LT & RT

STEEL BEAM GUARDRAIL, GALVANIZED
 243+00 TO 244+00 LT
 250+22 TO 252+59.5 LT

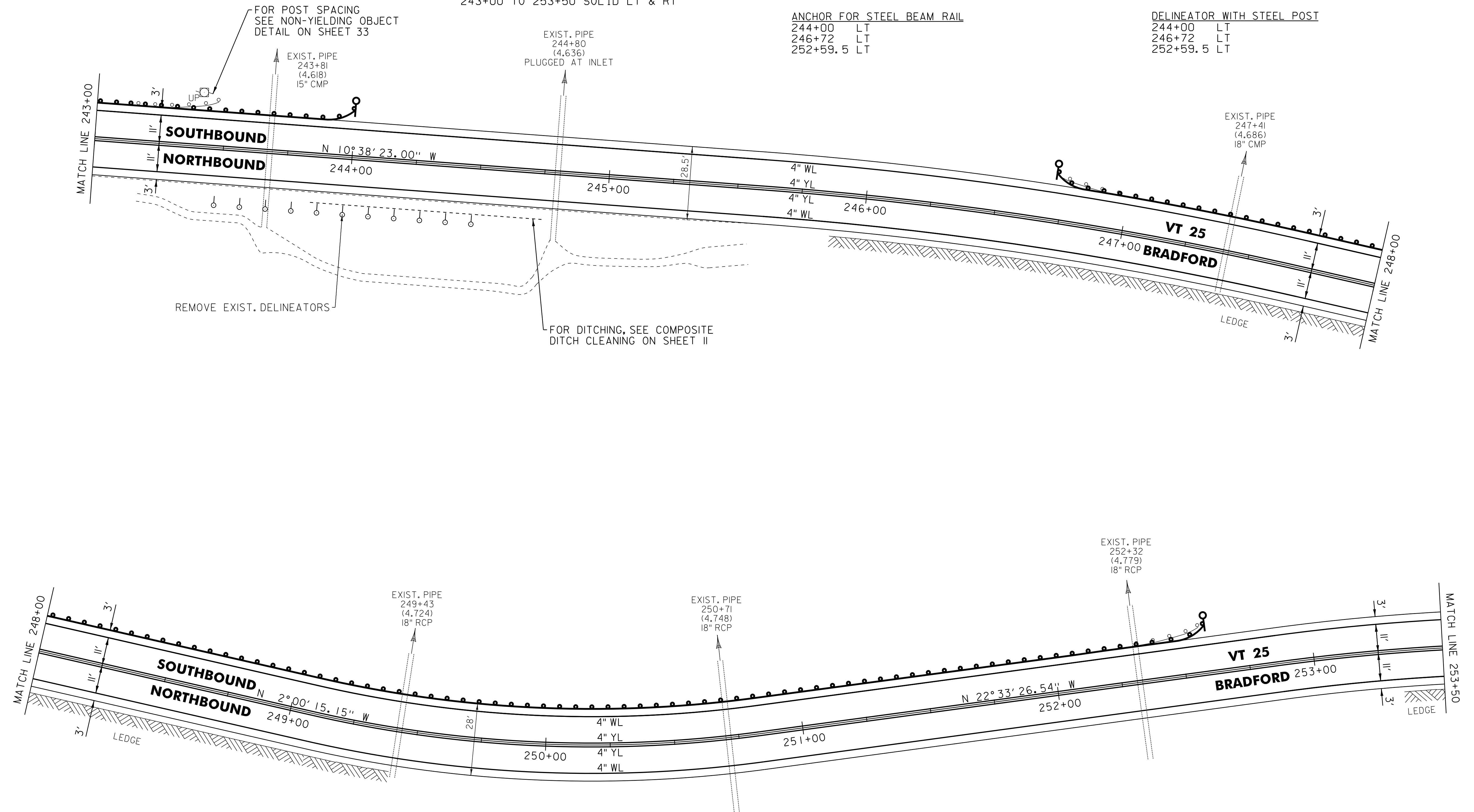
STEEL BEAM GUARDRAIL, GALVANIZED W/8 FEET POSTS
 246+72 TO 250+22 LT

ANCHOR FOR STEEL BEAM RAIL
 244+00 LT
 246+72 LT
 252+59.5 LT

REMOVAL AND DISPOSAL OF GUARDRAIL
 243+00 TO 243+47 LT
 246+72 TO 252+57 LT

REMOVAL OF EXISTING DELINEATOR
 243+48 TO 244+48 RT (11)

DELINEATOR WITH STEEL POST
 244+00 LT
 246+72 LT
 252+59.5 LT



NOT TO SCALE

LEGEND

- R = REMOVE EXISTING
- S = SALVAGED
- R&S = REMOVE AND SALVAGE
- N = NEW
- RET = RETAIN
- B-B = BACK TO BACK
- = EXISTING GUARDRAIL
- = PROPOSED GUARDRAIL
- YL = YELLOW LINE
- WL = WHITE LINE
- = DELINEATOR
- ||||| = RUMBLE STRIP

ROADWAY LAYOUT 29 VT 25

PROJECT NAME: BRADFORD

PROJECT NUMBER: STP 2917(I)

FILE NAME: p10b236.dgn

PROJECT LEADER: PTS

DESIGNED BY: NULL

IPARM FILE NAME: p10b236_70

PLOT DATE: 03-SEP-2014 12:51

DRAWN BY: SNG

CHECKED BY: PTS

SHEET 70 OF 105