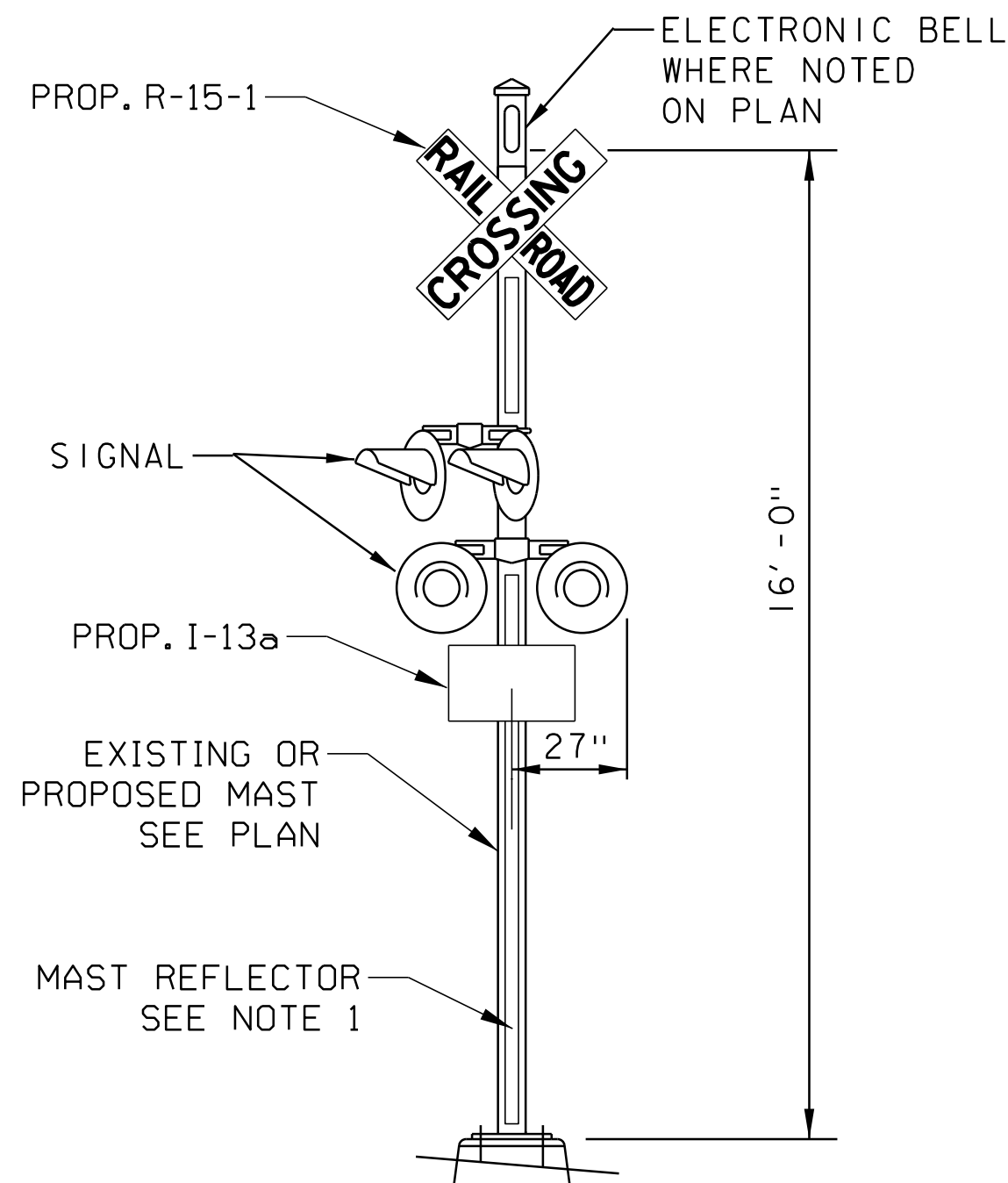


**PERMANENT NUMBER SIGN**  
NTS

**PERMANENT NUMBER SIGN NOTES:**

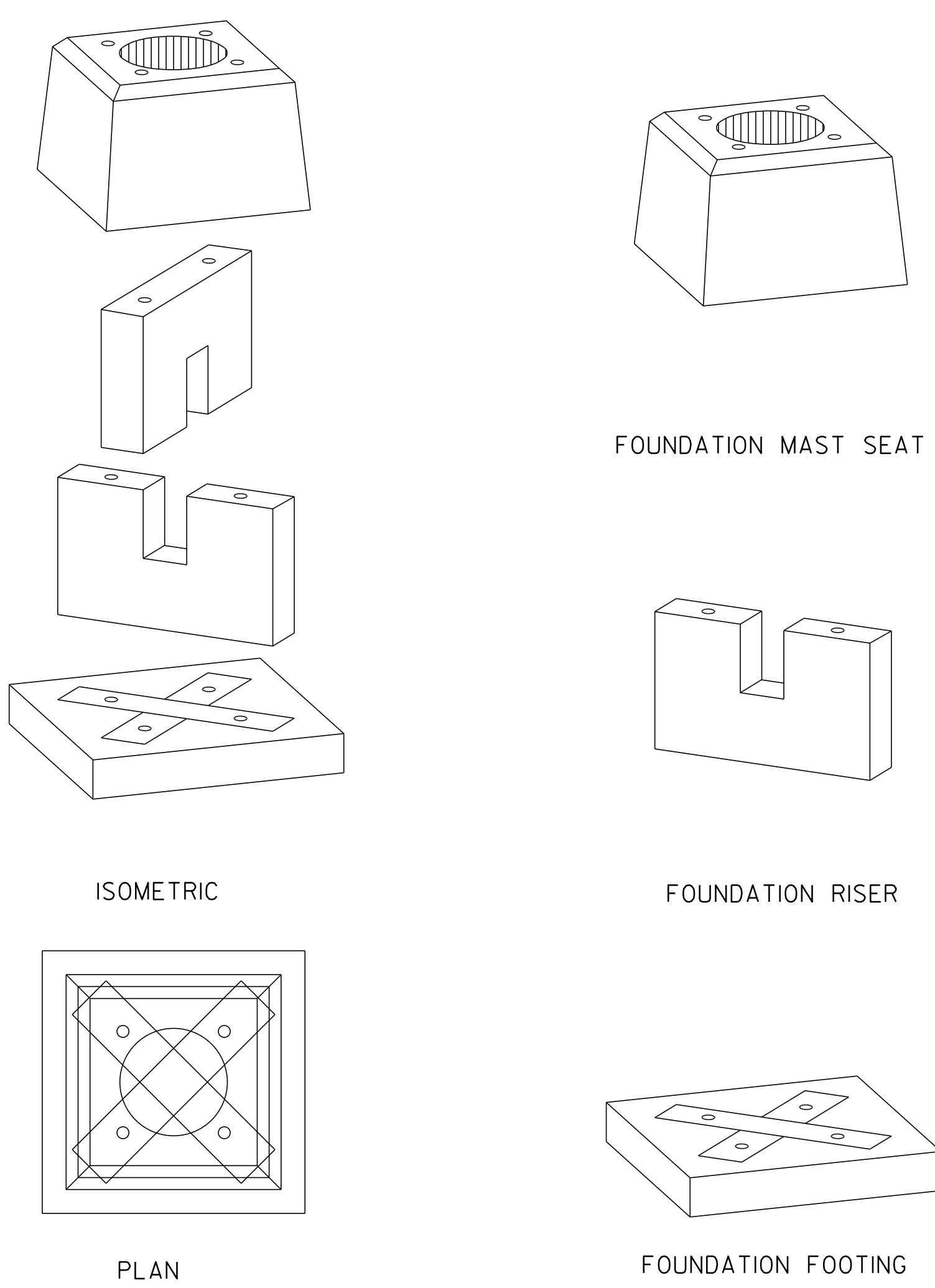
- PERMANENT NUMBER SIGN PLATES SHALL BE MADE UP OF 0.032 GAGE ALUMINUM WITH RAISED NUMBERS AND LETTERS. SEE SPECIFICATIONS. INSTALL ON SIGNAL MAST ONE ON EACH SIDE OF CROSSING.



**TYPICAL RAILROAD SIGNAL DETAIL**  
NTS

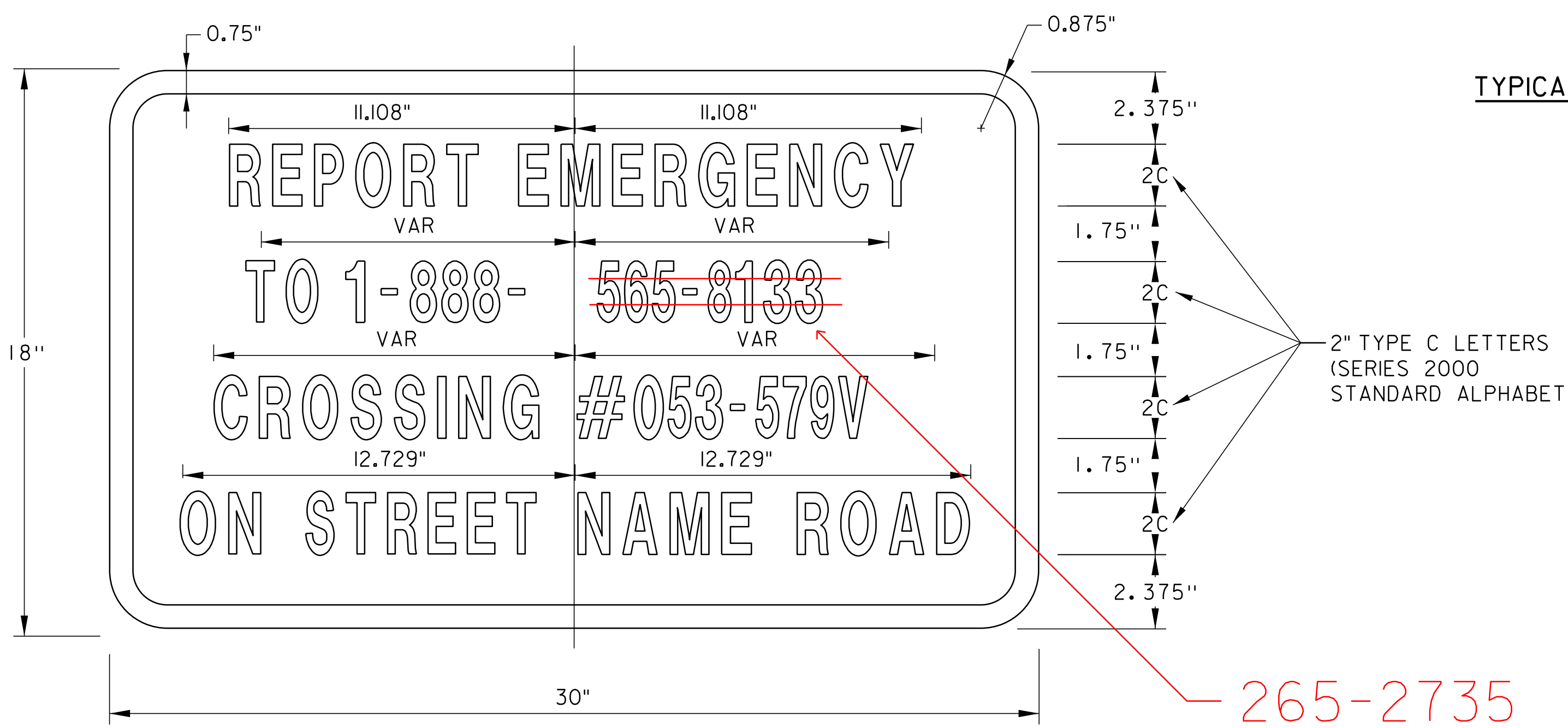
**RAILROAD SIGNAL MAST NOTES:**

- A STRIP OF ASTM TYPE III OR TYPE V RETROREFLECTIVE WHITE MATERIAL NOT LESS THAN 2 INCHES IN WIDTH, SHALL BE USED ON EACH SUPPORT AT HIGHWAY-RAIL GRADE CROSSING FOR THE FULL LENGTH OF THE FRONT AND BACK OF THE SUPPORT FROM THE CROSSBUCK SIGN OR NUMBER OF TRACKS SIGN TO NEAR GROUND LEVEL.
- FLASHING LIGHT SIGNAL EQUIPMENT SHALL BE NEW 12" LED FLASHING LIGHT UNITS MOUNTED ON THE CROSSING SIGNAL MAST.
- FOR CROSS BUCK SIGN (R15-1) SEE VAOT STANDARD SHEET E-190.
- FOR THE SIGNAL MASTS AT RAILROAD STATION 100+18RT AND 99+73RT PROVIDE AN ADDITIONAL 30 FEET OF COILED SIGNAL WIRE AT THE SIGNAL MAST BASE. THE COILED SIGNAL WIRE IS TO BE BURIED IN THE GROUND AND WOULD PROVIDE FOR A FUTURE RELOCATION OF THE SIGNAL MAST TO ACCOMMODATE A SECOND TRACK IN THE CROSSING.
- TOP OF FOUNDATION TO BE AT THE SAME ELEVATION AS THE CROWN OF THE ROADWAY AND NO MORE THAN 4 INCHES ABOVE THE SURFACE OF THE GROUND.



**TYPICAL FOUNDATION DETAIL**  
NTS

SEE AREMA SIGNAL MANUAL SECTION 14.4 FOR ADDITIONAL FOUNDATION INFORMATION.



**I-13a SIGN**

**COLORS:** LEGEND BACKGROUND WHITE (RETROREFLECTIVE) BLUE (RETROREFLECTIVE)

**GENERAL MOTORIST SERVICE SIGN NOTES:**

- THE COLORS, MATERIALS, LETTERING, DESIGN, AND SPECIFICATION SHALL CONFORM TO THE NOTES SHOWN ON VAOT STANDARD E-132.
- THE EMERGENCY CONTACT TELEPHONE NUMBER IS 1-888-565-8133.
- PLACE A MINIMUM OF (3) I-13a SIGNS ONE ON EACH SIDE OF THE CROSSING AND ONE ON THE SIGNAL CASE OR HOUSE.

**CROSSING DETAILS 1**

PROJECT NAME: BRADFORD	
PROJECT NUMBER: STP 2917(I)	
FILE NAME: p10b236.dgn	PLOT DATE: 03-SEP-2014 12:50
PROJECT LEADER: PTS	DRAWN BY: ABR
DESIGNED BY: JHR	CHECKED BY: JHR
IPARM FILE NAME: 10B236.38X	SHEET 38 OF 105