

GPS CONTROL POINTS

---HVCTRL #31---

BETTY

NORTH = 900592.470
EAST = 1634080.021
ELEV. = 1551.511

GENERAL LOCATION: JAY, VT.
TO REACH FROM THE INTERSECTION OF VT ROUTE 105 AND VT ROUTE 105A (GLENN SUTTON ROAD) IN STEVENS MILLS, GO EAST ALONG VT ROUTE 105 FOR 5.6 MI (9.0 KM) TO THE SITE OF THE MARK ON THE LEFT, JUST WEST OF A SMALL GRAVEL PULLOUT. TO REACH FROM THE INTERSECTION OF VT ROUTE 105 AND VT ROUTE 101, GO WEST ALONG VT ROUTE 105 FOR 6.9 MI (11.1 KM) TO THE SITE OF THE MARK. THE MARK IS SET IN THE TOP OF A MASSIVE ROCK OUTCROP. IT IS 8.9 M (29.2 FT) NORTH OF AND ABOUT 1M (3.3 FT) HIGHER THAN THE CENTERLINE OF VT ROUTE 105, 60.6 M (198.8 FT) SOUTHEAST OF MILE MARKER 1050/1012/0180, 2.8 M (9.2 FT) EAST OF THE HIGHEST POINT IN THE OUTCROP AND 2.3 M (7.5 FT) NORTH OF A FIBERGLASS WITNESS POST.

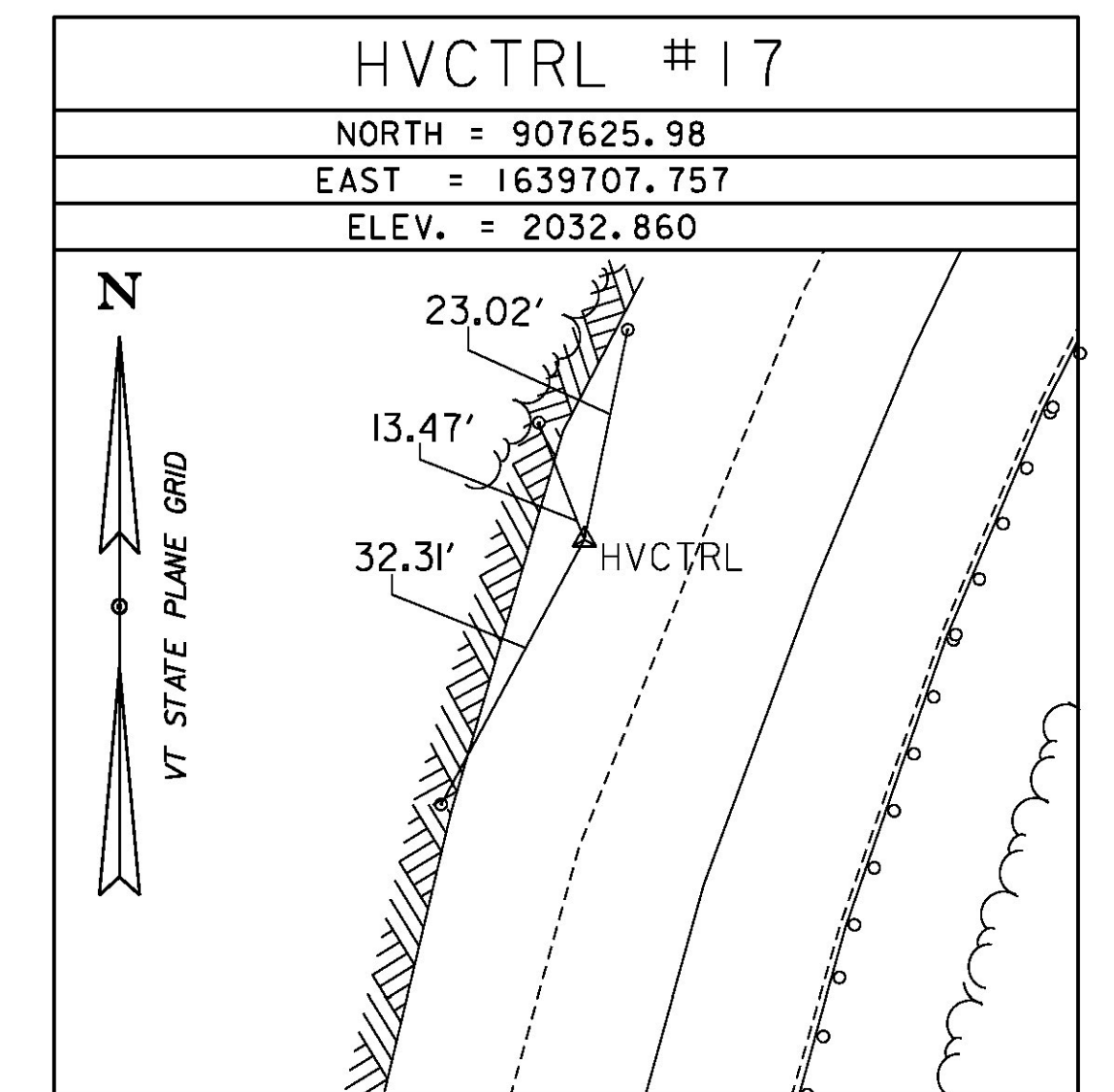
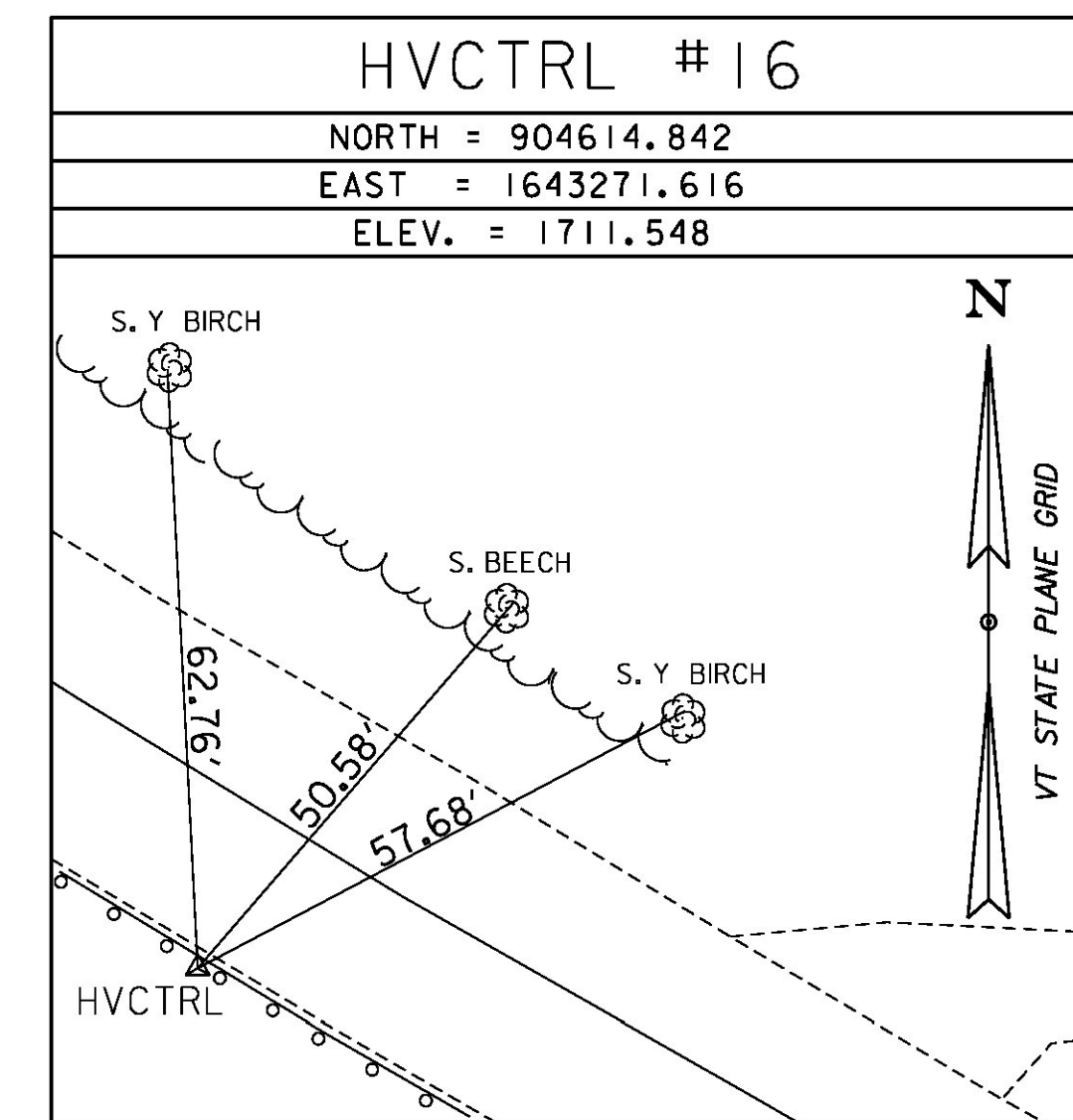
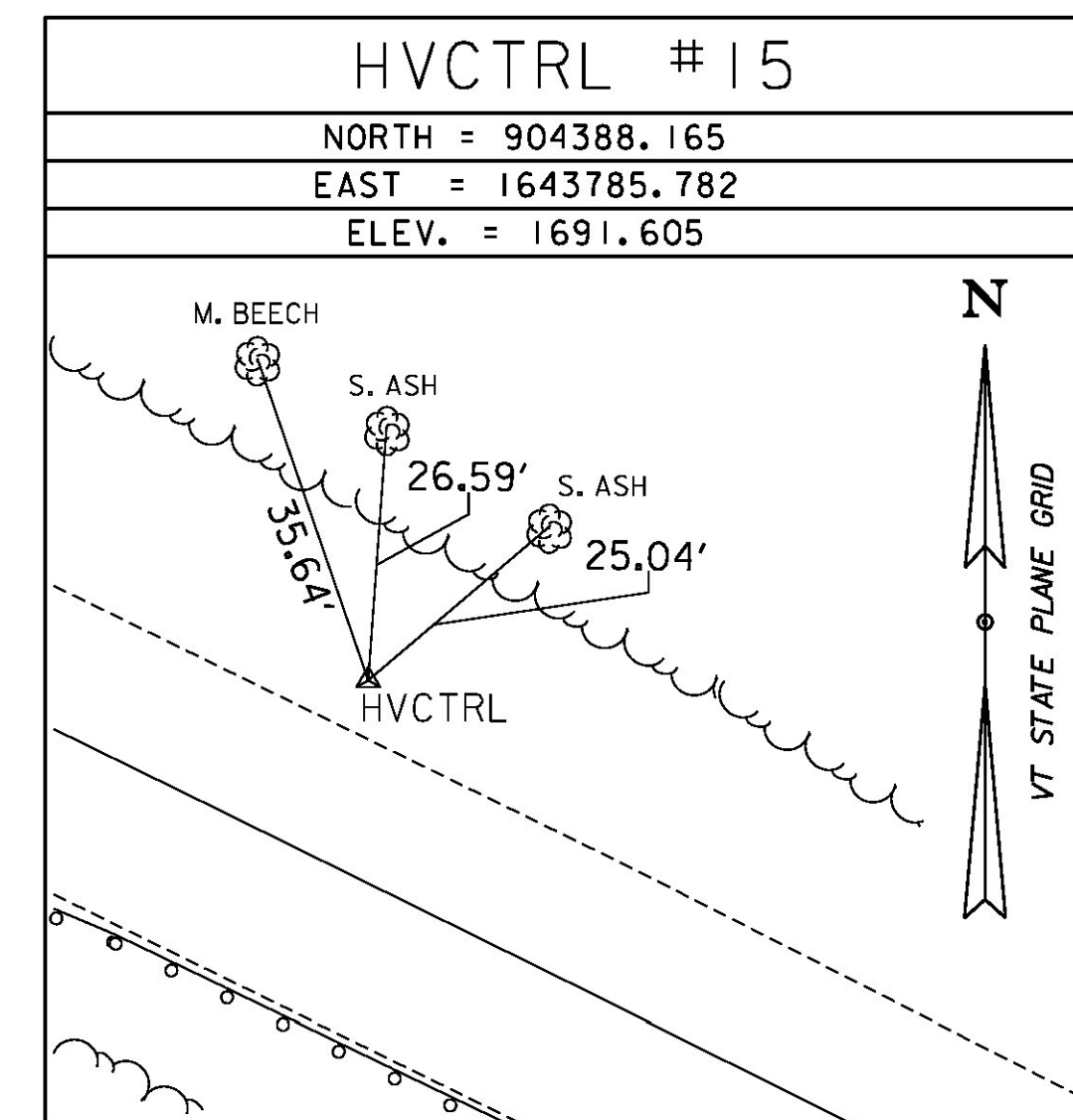
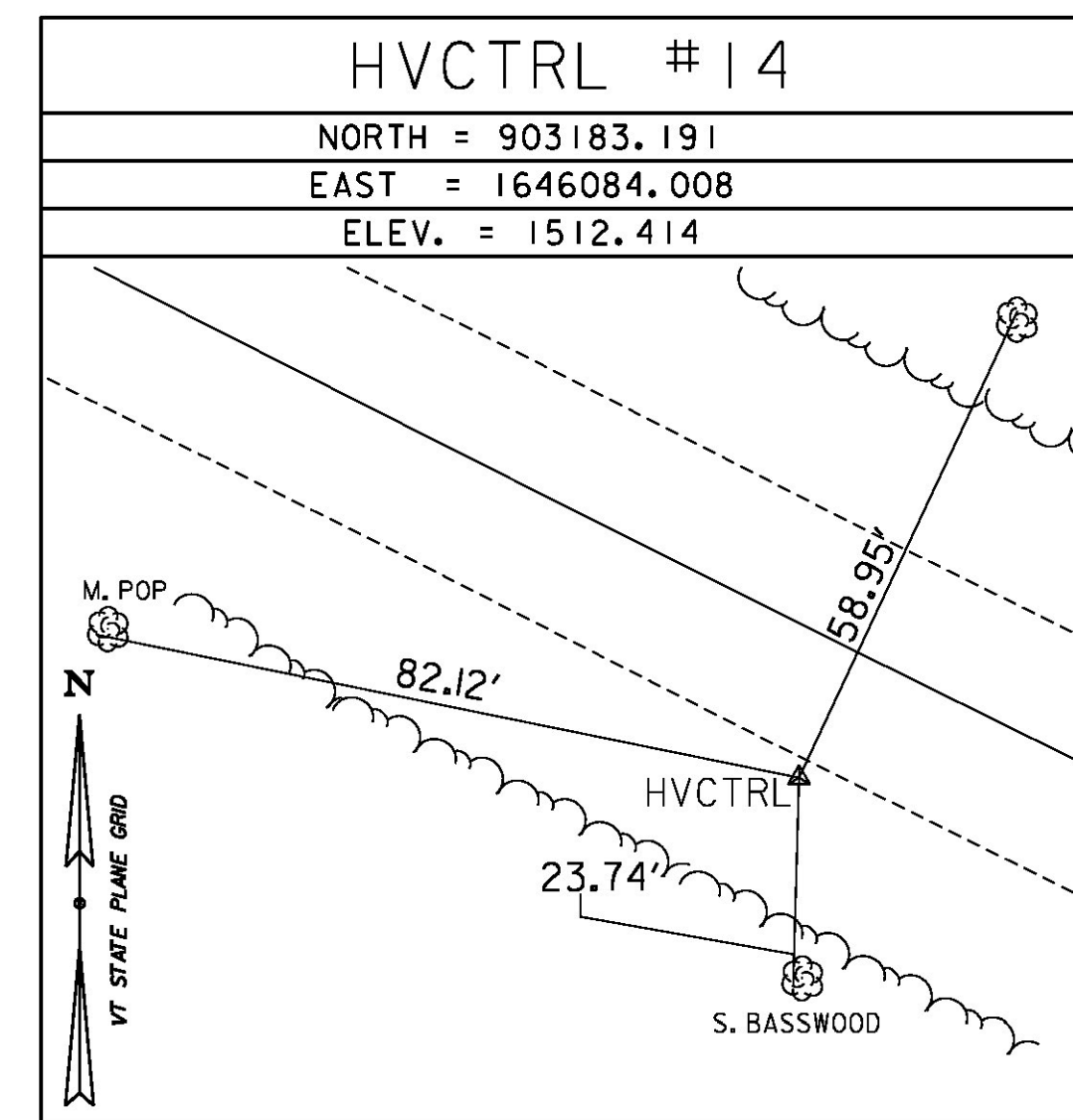
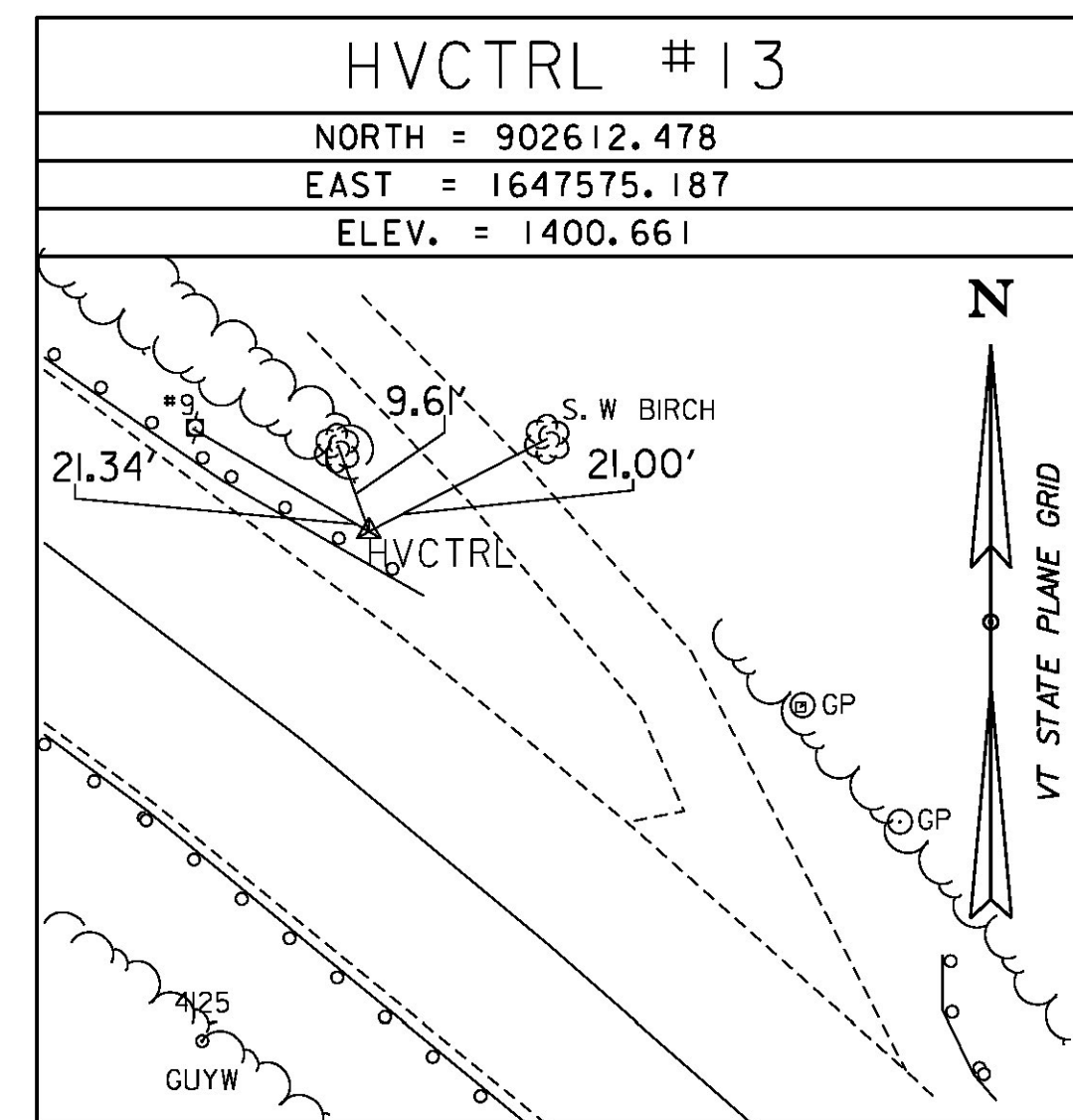
---HVCTRL #46---

REBAR

NORTH = 911142.188
EAST = 1621546.721
ELEV. = 947.698

GENERAL LOCATION: RICHFORD, VT.
TO REACH FROM THE INTERSECTION OF VT ROUTE 105 AND VT ROUTE 105A (GLENN SUTTON ROAD) IN STEVENS MILLS, GO EAST ALONG VT ROUTE 105 FOR 2.2 MI (3.5 KM) TO A GRAVEL PULLOUT ON THE RIGHT AND THE SITE OF THE MARK ON THE RIGHT. TO REACH FROM THE INTERSECTION OF VT ROUTE 101 AND VT ROUTE 105, GO WEST ALONG VT ROUTE 105 FOR 10.3 MI (16.6 KM) TO THE SITE OF THE MARK. THE MARK IS A REBAR WITH RED PLASTIC CAP DRIVEN FLUSH WITH THE GROUND SURFACE. IT IS 0.8 M (2.6 FT) WEST OF AND 0.1 M (0.3 FT) LOWER THAN THE VT ROUTE 105 WEST EDGE OF PAVEMENT, 52.3 M (171.6 FT) SOUTH OF THE CENTERLINE OF THE NORTH END OF THE PULLOUT ENTRANCE AND 38.2 M (125.3 FT) NORTH OF THE SOUTH ENTRANCE OF THE PULLOUT, WHICH LEADS TO A DRIVE WITH STEEL GATE.

TRAVERSE TIES



ALIGNMENT TIES

NORTH =
EAST =
ELEV. =

NORTH =
EAST =
ELEV. =

NORTH =
EAST =
ELEV. =

NORTH =
EAST =
ELEV. =

NORTH =
EAST =
ELEV. =

DATUM
VERTICAL NAVD 88
HORIZONTAL NAD 83 (2007)
ADJUSTMENT COMPASS

PROJECT NAME: JAY-TROY
PROJECT NUMBER: STP 2915(I)
FILE NAME: M:\0b232\Survey\10b232\1 PLOT DATE: 5/16/2014
PROJECT LEADER: M. FOWLER DRAWN BY: S. DONOVAN
DESIGNED BY: VTrans CHECKED BY: M. FOWLER
TIE SHEET 3 SHEET 6 OF 244