

GPS CONTROL POINTS

__HVCTRL #12__

CROOK

NORTH = 901592.263
EAST = 1648515.07
ELEV. = 1323.850

GENERAL LOCATION, JAY, VT.
TO REACH FROM THE INTERSECTION OF VT ROUTE 105 AND VT ROUTE 101, GO WEST ALONG VT ROUTE 105 FOR 2.8 MI (4.5 KM) TO THE INTERSECTION OF MORSE ROAD LEFT. CONTINUE STRAIGHT AHEAD AND GO WEST ALONG VT ROUTE 105 FOR ABOUT 100 M (328.1 FT) TO THE SITE OF THE MARK ON THE LEFT. TO REACH FROM THE INTERSECTION OF VT ROUTE 105 AND VT ROUTE 105A (GLENN SUTTON ROAD) IN STEVENS MILLS, GO EAST ALONG VT ROUTE 105 FOR 9.7 MI (15.6 KM) TO THE SITE OF THE MARK.
THE MARK IS SET 10 CM (4 INCHES) BELOW GROUND SURFACE IN THE TOP OF A FENO STYLE MONUMENT. IT IS 10.2 M (33.5 FT) SOUTHWEST OF AND ABOUT LEVEL WITH THE CENTERLINE OF VT ROUTE 105, 13.1 M (43.0 FT) NORTH-NORTHEAST OF POLE NO 4, 3.7 M (12.1 FT) SOUTHEAST OF A DIM GRAVEL DRIVE WITH CURB CUT AND A PAVED APRON, 23.3 M (76.4 FT) SOUTH OF AND ACROSS THE ROAD FROM POLE NO 5 AND 0.3 M (1.0 FT) NORTHEAST OF A FIBERGLASS WITNESS POST.

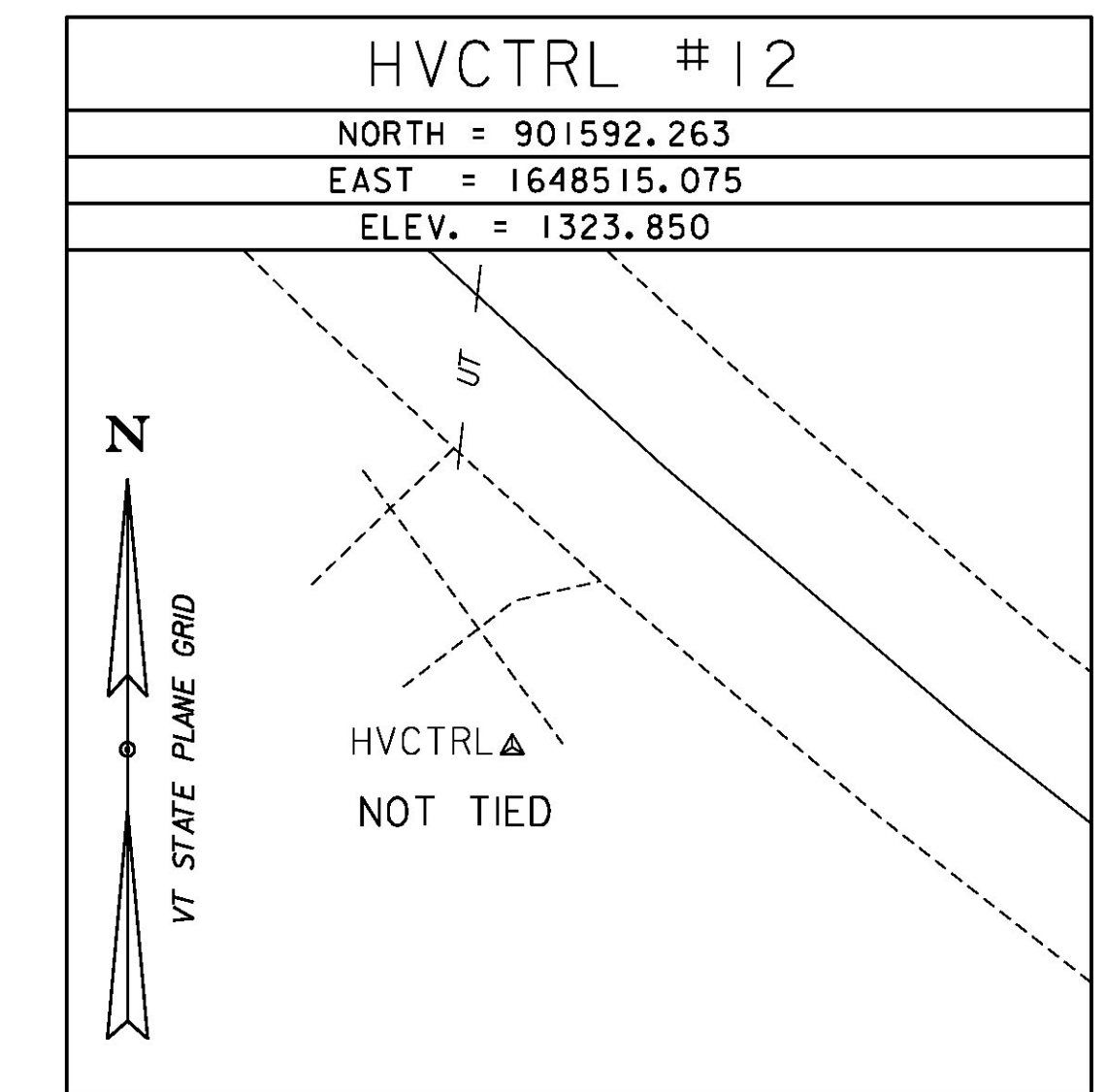
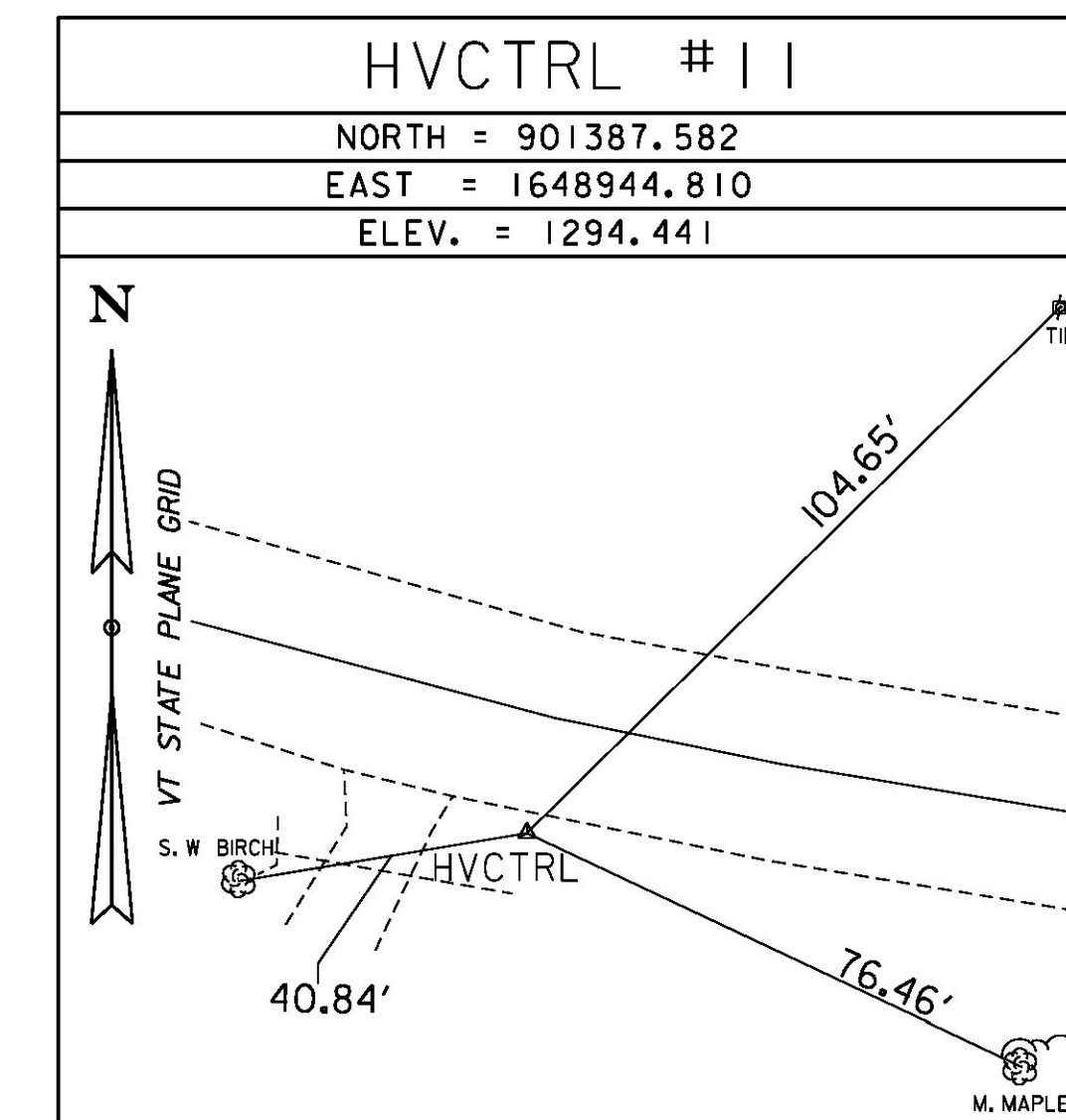
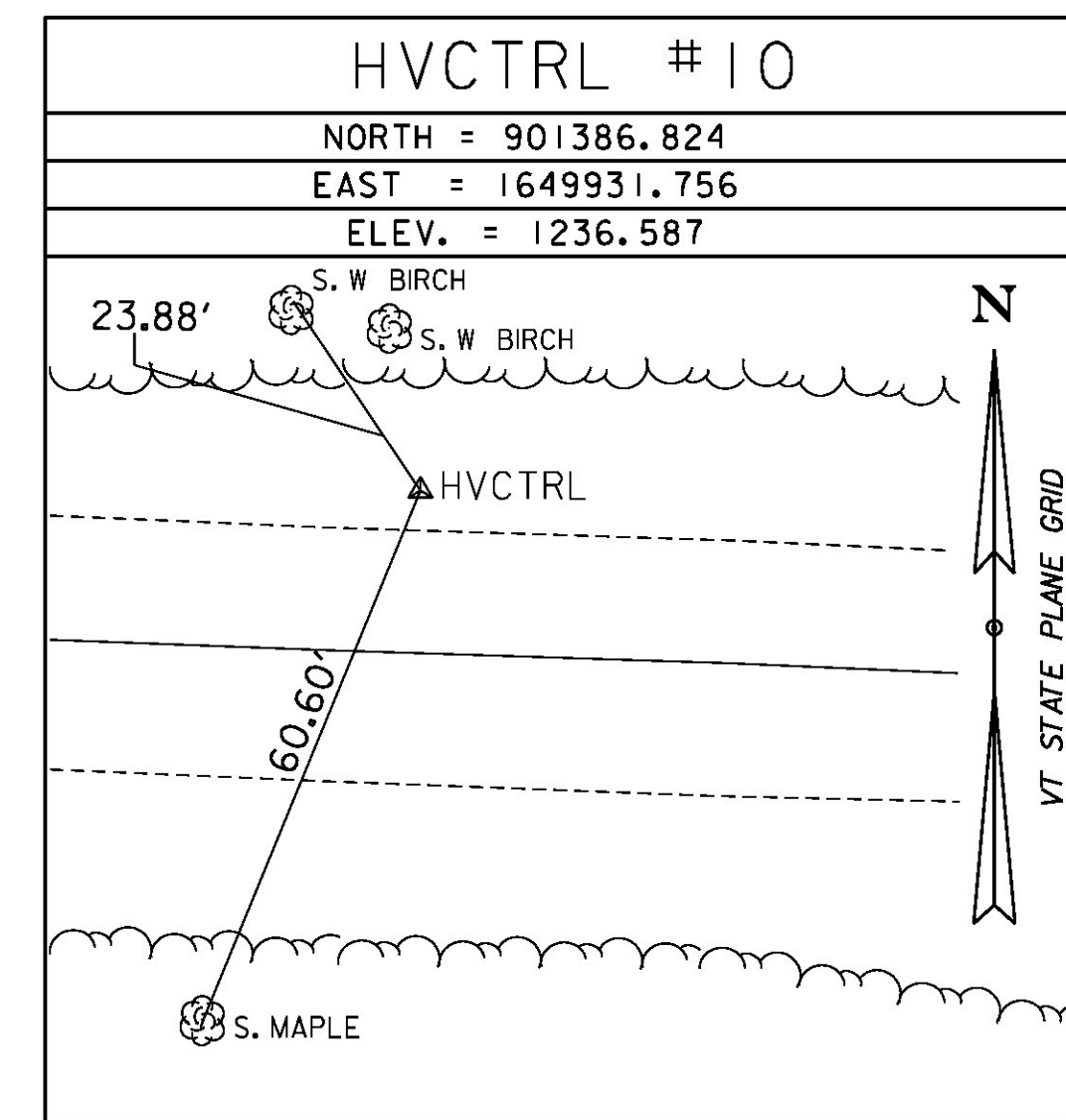
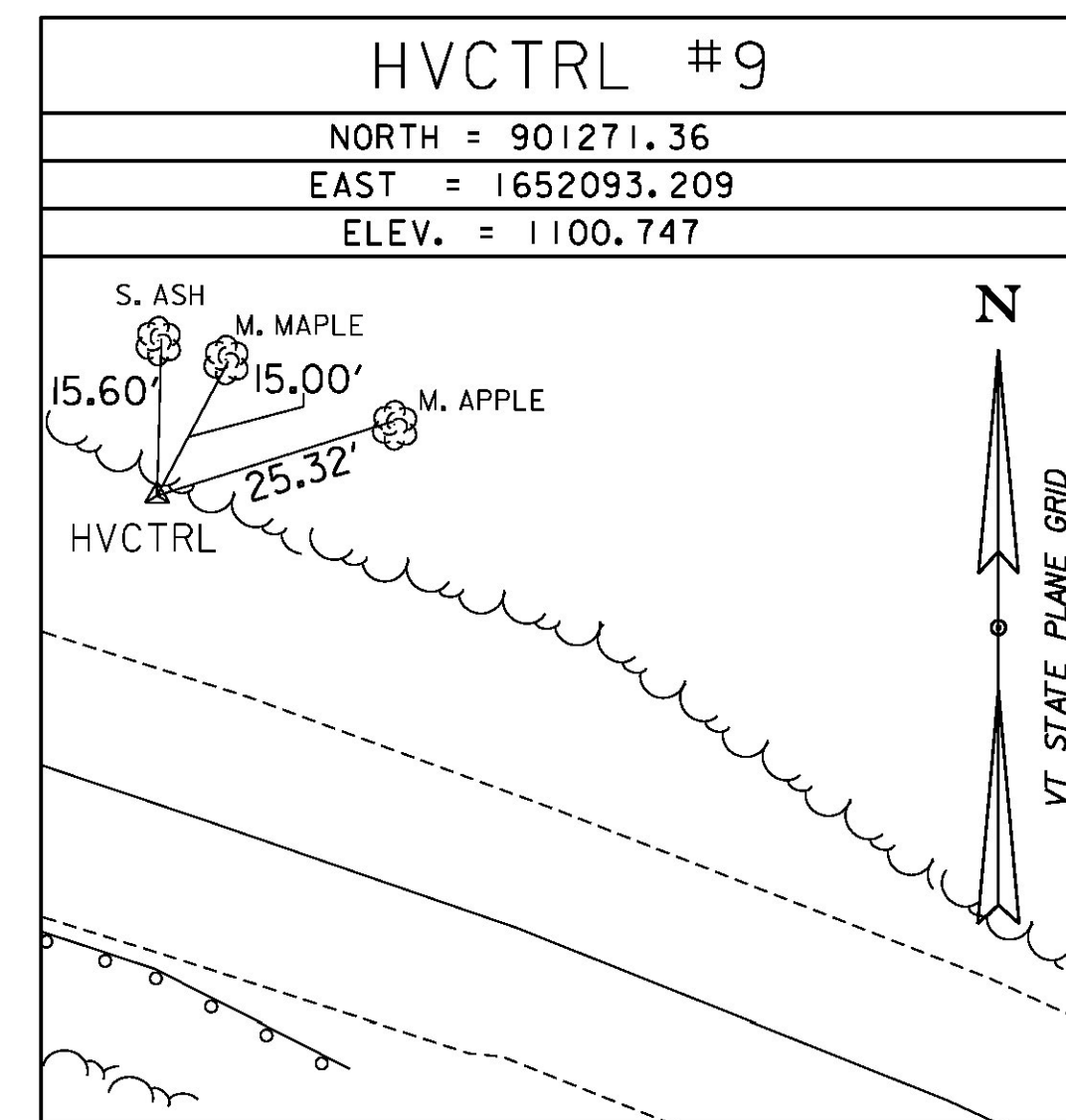
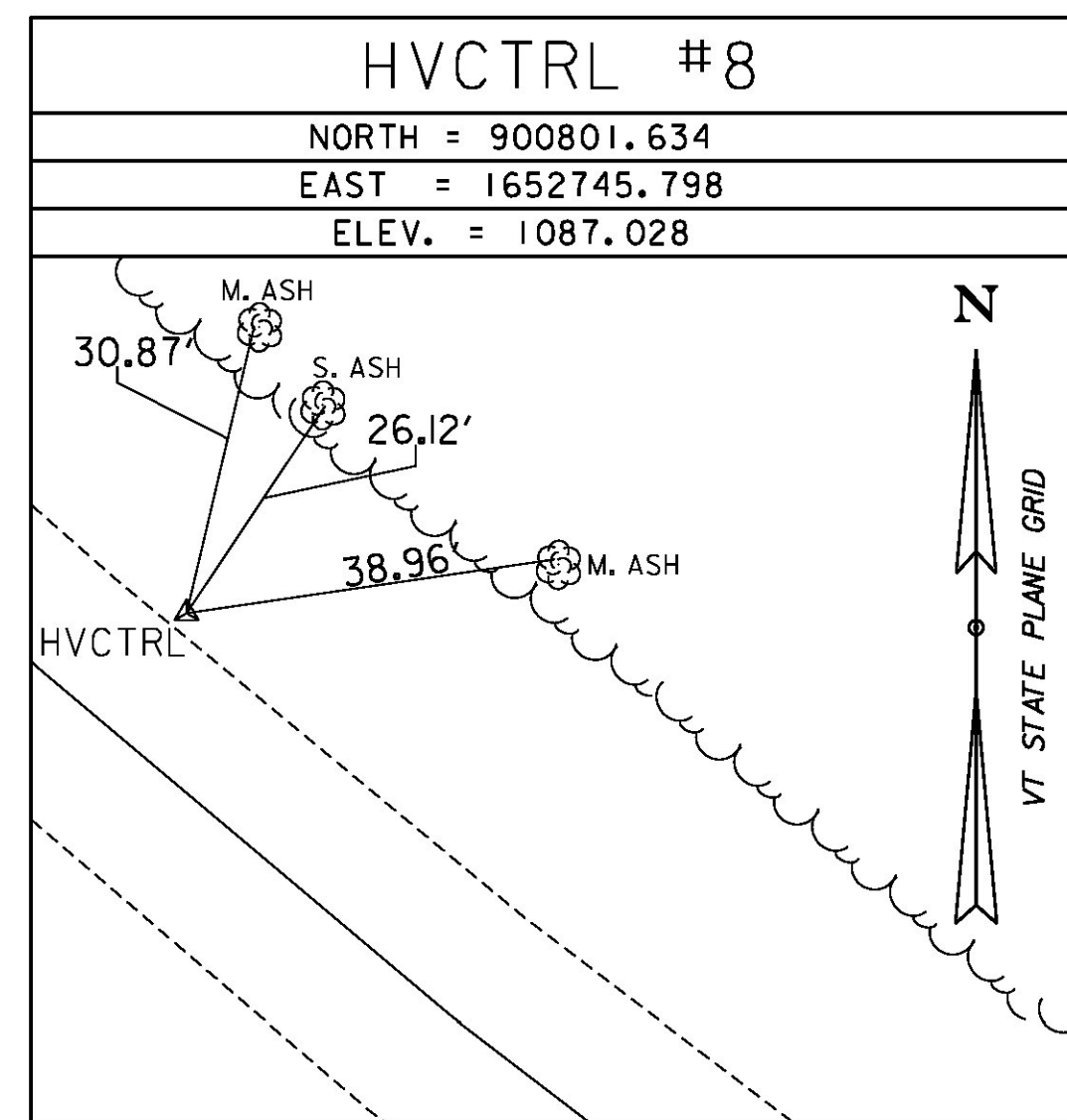
__HVCTRL #18__

PEARL HARBOR

NORTH = 907883.467
EAST = 1640072.943
ELEV. = 1997.863

GENERAL LOCATION, JAY, VT.
TO REACH FROM THE INTERSECTION OF VT ROUTE 101 AND VT ROUTE 105 IN TROY, GO WEST ALONG VT ROUTE 105 FOR 4.9 MI (7.9 KM) TO THE SITE OF THE MARK ON THE LEFT. IT IS 0.3 MI (0.5 KM) EAST ALONG VT ROUTE 105 FROM ITS INTERSECTION WITH THE LONG TRAIL AT THE SUMMIT OF THE PASS. THE MARK IS SET IN THE TOP OF A MASSIVE ROCK OUTCROP WHICH IS FLUSH WITH THE GROUND SURFACE ON THE NORTH SIDE AND PROJECTS ABOUT 2 M (6.6 FT) ON THE SOUTH SIDE.
IT IS 8.3 M (27.2 FT) SOUTH OF AND ABOUT 0.5 M (1.6 FT) LOWER THAN THE CENTERLINE OF VT ROUTE 105, 22.8 M (74.8 FT) EAST OF THE CENTER OF A DROP INLET, 12.7 M (41.7 FT) WEST OF THE SOUTH (OUTLET) END OF A 60 CONCRETE MONUMENT DIAMETER CONCRETE CULVERT AND 1.9 M (6.2 FT) SOUTHWEST OF A FIBERGLASS WITNESS POST.

TRAVERSE TIES



ALIGNMENT TIES

NORTH =
EAST =
ELEV. =

NORTH =
EAST =
ELEV. =

NORTH =
EAST =
ELEV. =

NORTH =
EAST =
ELEV. =

NORTH =
EAST =
ELEV. =

DATUM	
VERTICAL	NAVD 88
HORIZONTAL	NAD 83 (2007)
ADJUSTMENT	COMPASS

PROJECT NAME:	JAY-TROY
PROJECT NUMBER:	STP 2915(I)
FILE NAME:	M:\0b232\Survey\10b232\1
PROJECT LEADER:	M. FOWLER
DESIGNED BY:	VTrans
TIE SHEET	2
PLOT DATE:	5/16/2014
DRAWN BY:	S. DONOVAN
CHECKED BY:	M. FOWLER
SHEET	5 OF 244